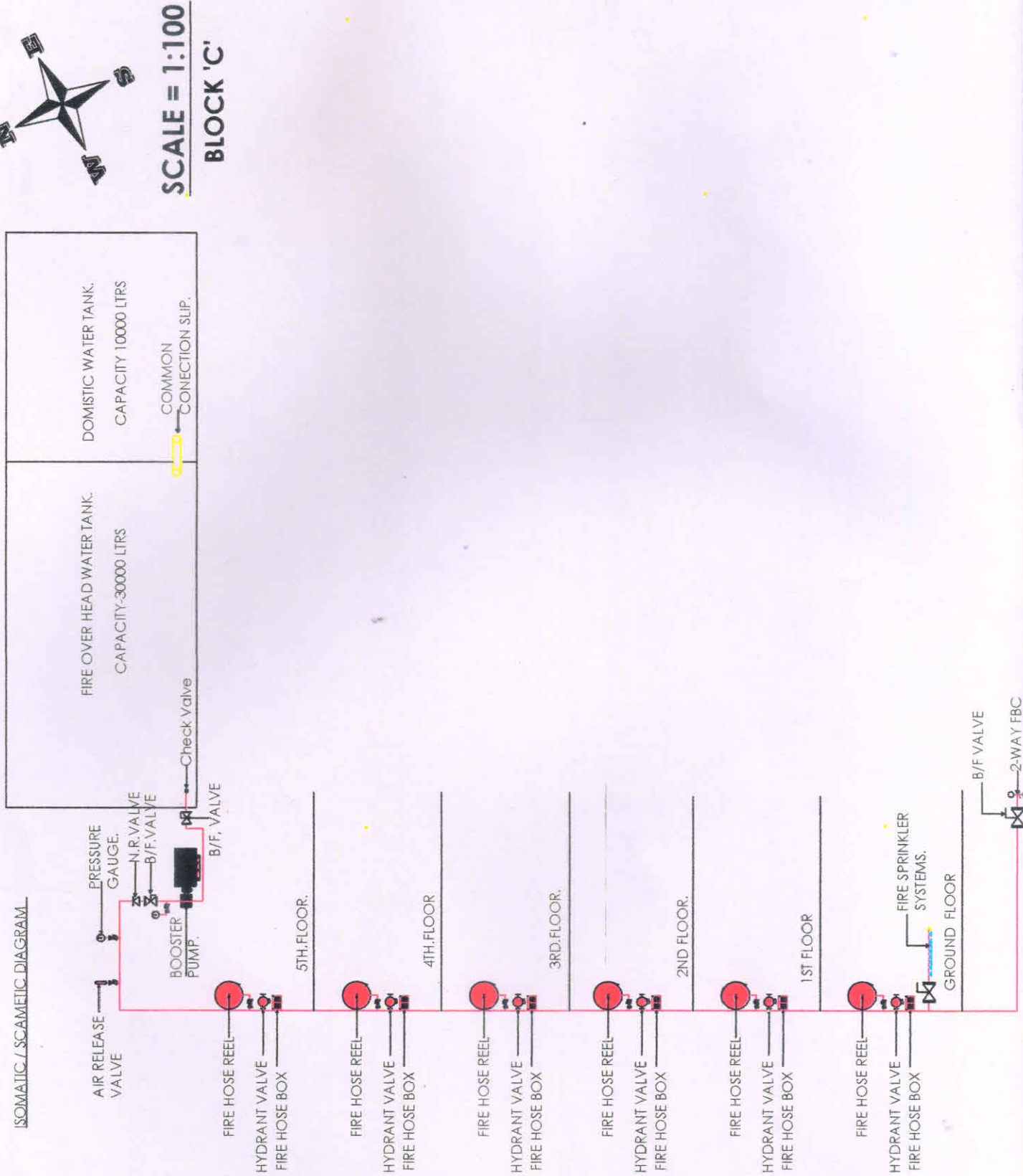


PROPOSED G+V STORIED BUILDING AT HOLDING NO. 262, PULIN AVENUE, KOLKATA - 700081

ISOMATIC / SCAMETIC DIAGRAM



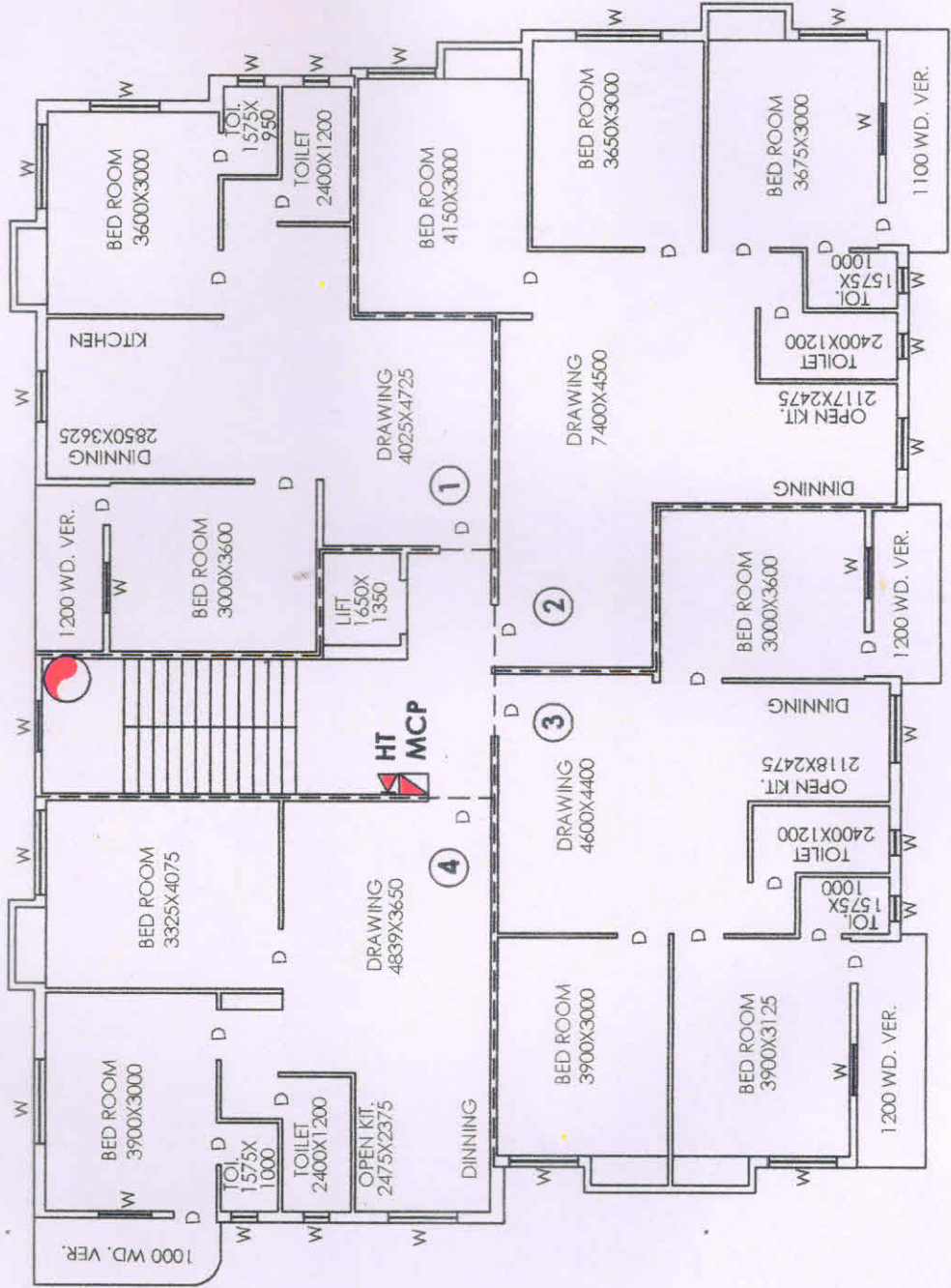
BETOP HOUSING DEVELOPERS PVT. LTD.
Director

BETOP HOUSING DEVELOPERS PVT. LTD.
Director



SCALE = 1:100

BLOCK 'C'

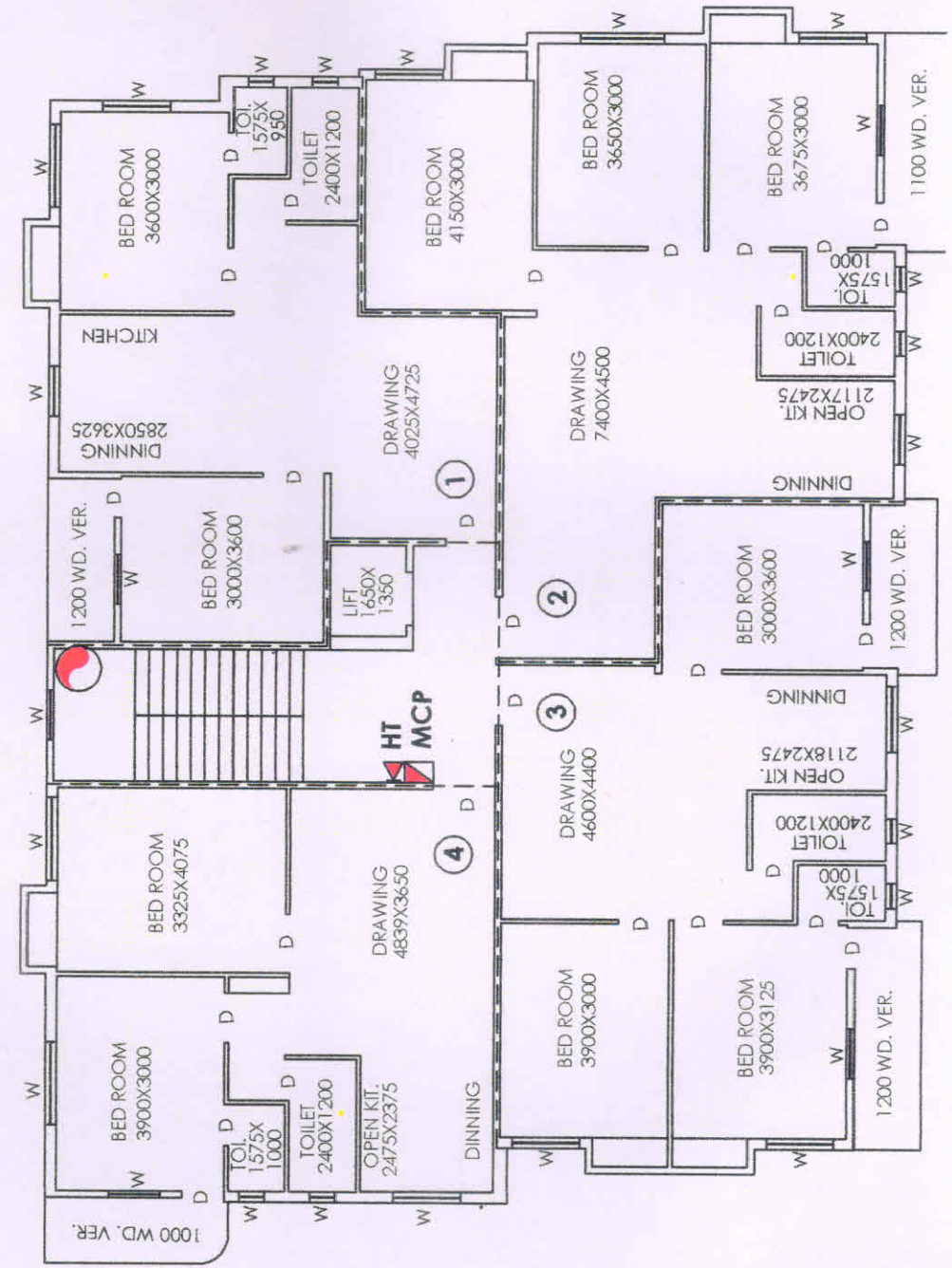


FIRST FLOOR PLAN



SCALE = 1:100

BLOCK 'C'



THIRD FLOOR PLAN

Director
[Signature]
 SETOP HOUSING DEVELOPERS PVT. LTD.

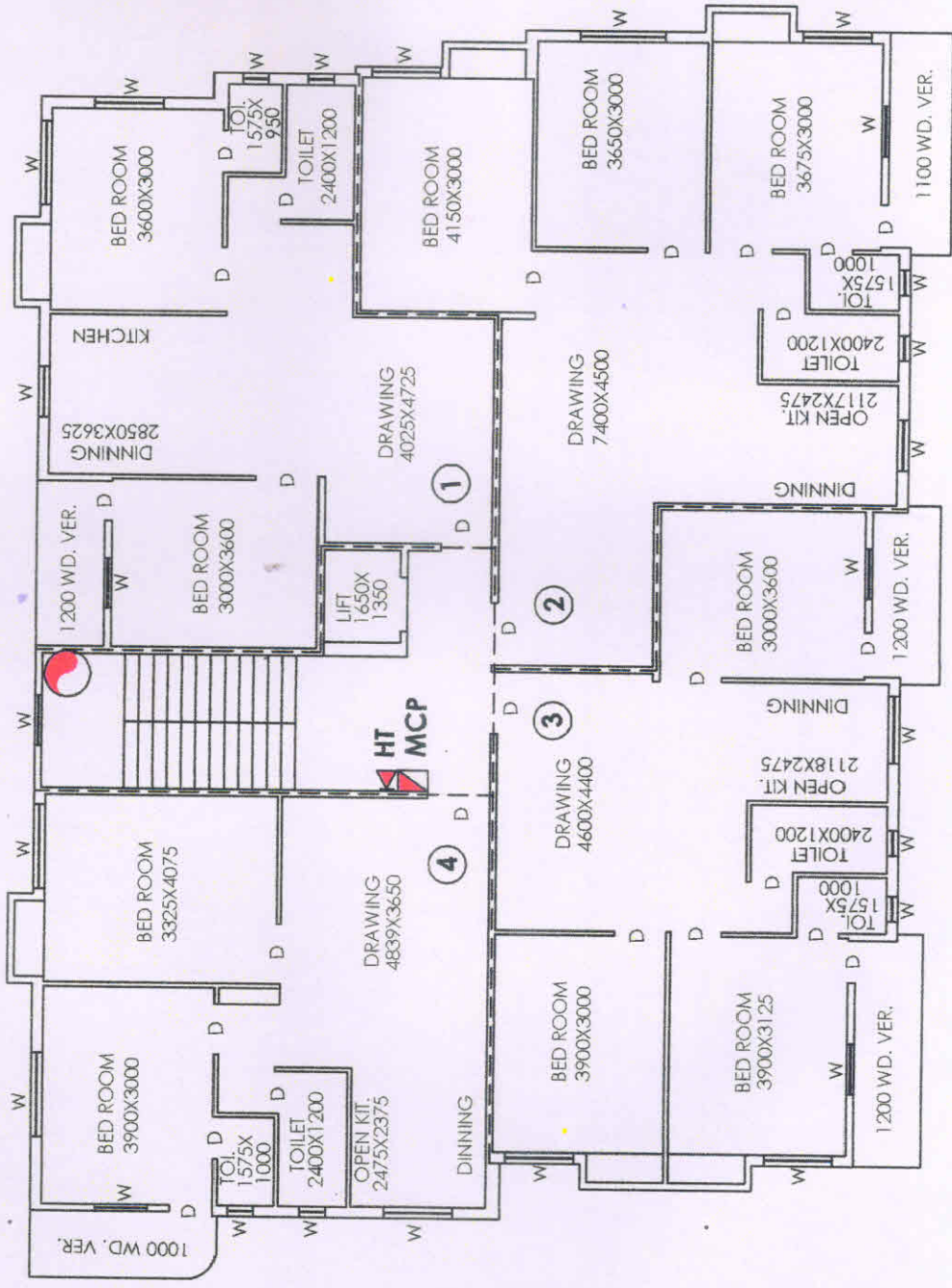
Director
[Signature]
 SETOP HOUSING DEVELOPERS PVT. LTD.

1:100 SCALE SEE GENERAL SPECIFICATIONS OF BUILDINGS REG. NO. 402, PULHAI MAIN ROAD, KALAMANGALAM - 700001



SCALE = 1:100

BLOCK 'C'



FOURTH FLOOR PLAN

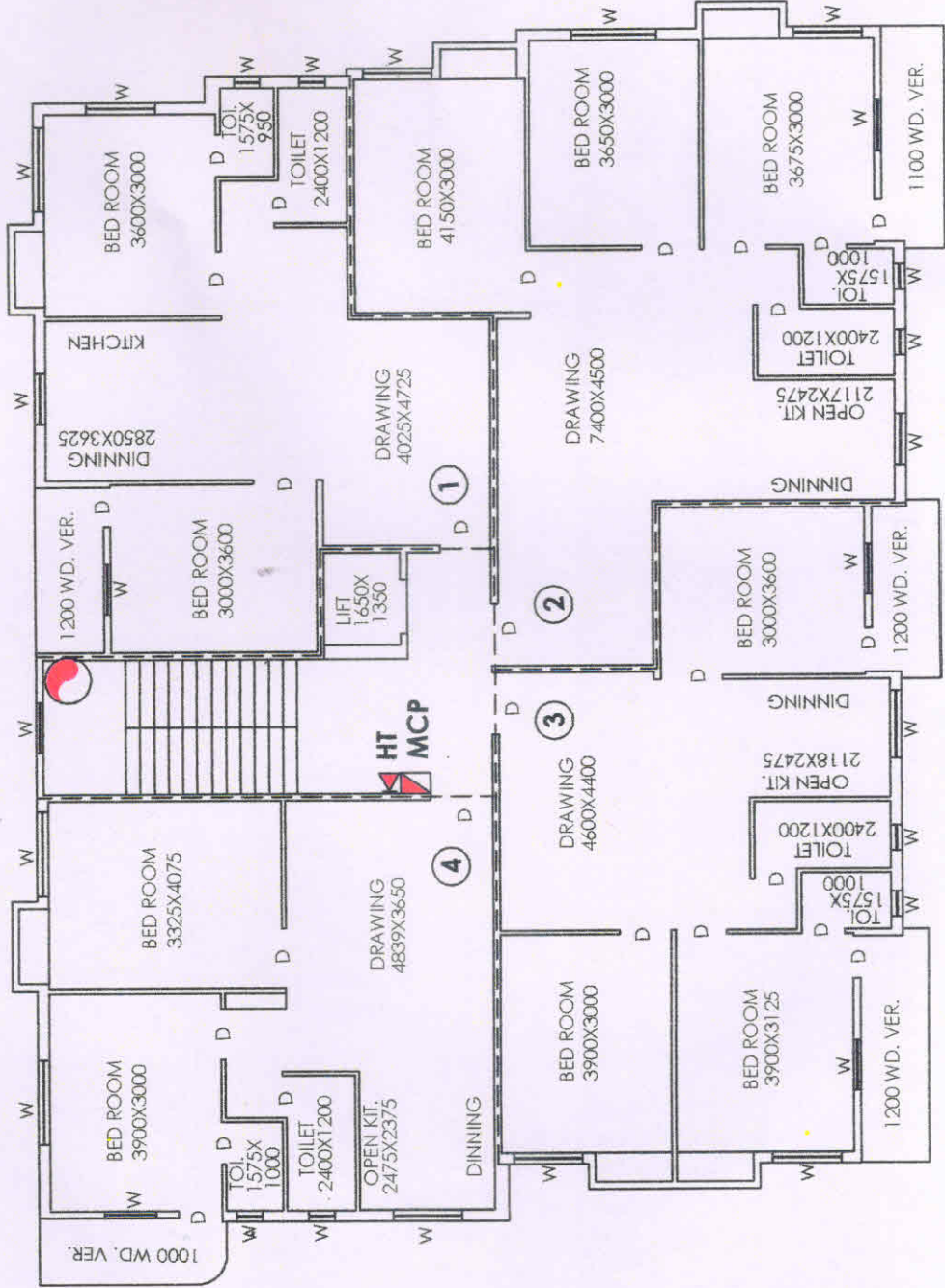
BETOP HOUSING DEVELOPERS PVT. LTD.
Director

BETOP HOUSING DEVELOPERS PVT. LTD.
Director



SCALE = 1:100

BLOCK 'C'



FIFTH FLOOR PLAN

BETOP HOUSING DEVELOPERS PVT. LTD.
Director

BETOP HOUSING DEVELOPERS PVT. LTD.
Director