

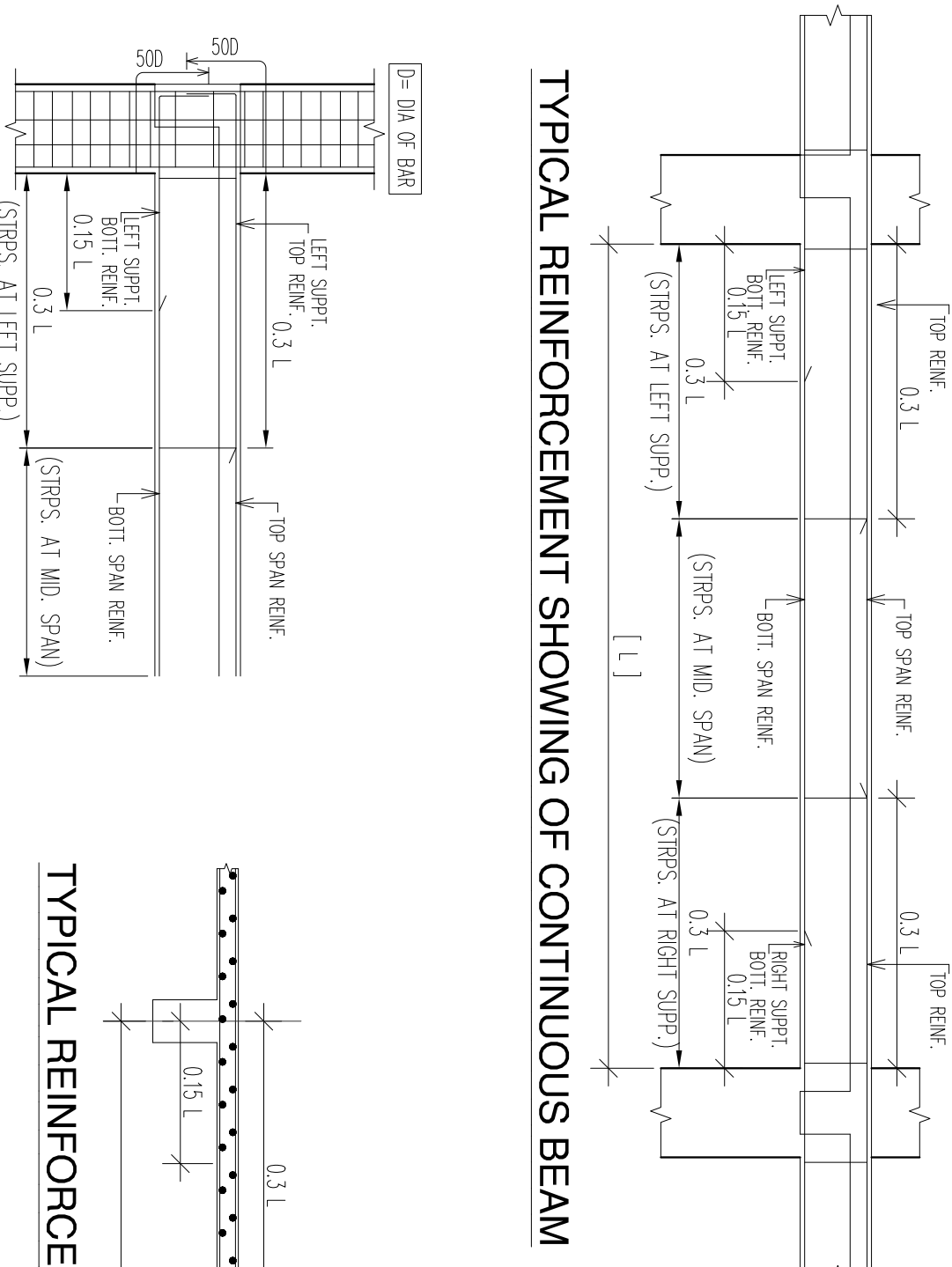
FLOOR BEAM SCHEDULE

GRADE OF CONCRETE - M25	BEAM MKD		REINFT. AT SUPPORT		REINFT. AT MID SPAN		STIRRUPS AT SUPP(10x3)	STIRRUPS AT SPAN
	WIDE	DEPTH	TOP	BOTTOM	TOP	BOTTOM		
B1	300	500	6-16TOR	3-16TOR	2-16TOR	3-16TOR+2-12TOR	810R100C/C	810R150C/C
B2	300	500	4-16TOR	4-16TOR	2-16TOR	4-16TOR	810R100C/C	810R150C/C
B3	300	500	4-16TOR	3-16TOR	2-16TOR	2-16TOR+1-12TOR	810R100C/C	810R150C/C
B4	300	500	4-16TOR	3-16TOR	2-16TOR	2-16TOR+1-12TOR	810R100C/C	810R150C/C
B5	300	500	4-16TOR	3-16TOR	2-16TOR	2-16TOR+1-12TOR	810R100C/C	810R150C/C
B6	250	500	3-16TOR+2-12TOR	3-16TOR	2-16TOR+1-12TOR	2-16TOR+3-12TOR	810R100C/C	810R150C/C
B7	250	500	2-16TOR+1-12TOR	2-16TOR+1-12TOR	2-16TOR+1-12TOR	2-16TOR+1-12TOR	810R100C/C	810R150C/C
B8	300	500	2-16TOR+1-12TOR	3-16TOR	3-16TOR	3-16TOR+1-20TOR	810R100C/C	810R150C/C
B9	300	500	5-16TOR	3-16TOR	3-16TOR	3-16TOR	810R100C/C	810R150C/C
B10	300	500	4-16TOR+1-12TOR	3-16TOR	3-16TOR	3-16TOR	810R100C/C	810R150C/C
B11	300	500	5-16TOR	3-16TOR	3-16TOR	4-10TOR+100C/C	810R100C/C	810R150C/C
B12	300	500	4-16TOR+1-12TOR	2-16TOR+1-20TOR	2-16TOR+1-20TOR	2-16TOR+3-12TOR	810R100C/C	810R150C/C
B13	300	500	4-16TOR+1-12TOR	2-16TOR+1-20TOR	2-16TOR+1-20TOR	2-16TOR+1-12TOR	810R100C/C	810R150C/C
B14	300	500	4-16TOR+1-12TOR	2-16TOR+1-20TOR	2-16TOR+1-20TOR	4-16TOR+1-12TOR	810R100C/C	810R150C/C
B15	300	500	3-16TOR+1-12TOR	2-16TOR+1-20TOR	2-16TOR+1-20TOR	2-16TOR+1-12TOR	810R100C/C	810R150C/C
B16	250	500	2-16TOR+1-12TOR	2-16TOR+1-20TOR	2-16TOR+1-20TOR	2-16TOR+1-12TOR	810R100C/C	810R150C/C
B17	300	500	4-16TOR+1-12TOR	2-16TOR+1-20TOR	2-16TOR+1-20TOR	2-16TOR+1-12TOR	810R100C/C	810R150C/C
MB-1	300	500	3-16TOR	3-16TOR	3-16TOR	2-16TOR	810R100C/C	810R150C/C

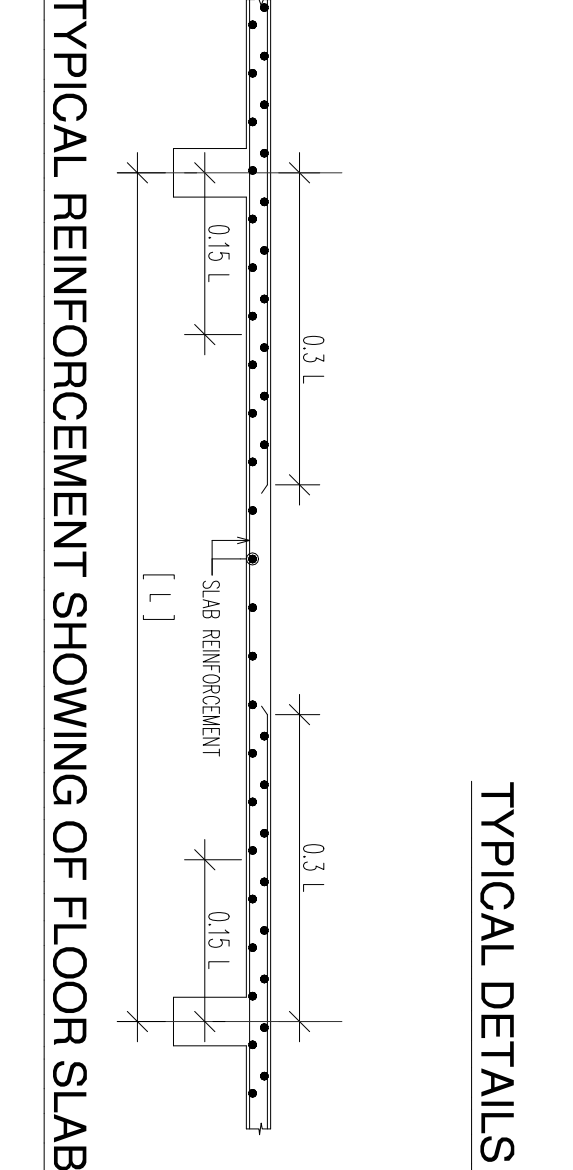
FLOOR SLAB SCHEDULE
GRADE OF CONCRETE - M25

SLAB MKD	DEPTH	REINFT. AT SHORTER SPAN	REINFT. AT LONGER SPAN
S1	125	810R@300/C ST	810R@400/C ST
S2	125	810R@400/C ST	810R@400/C KD
S3	125	810R@300/C ST	810R@450/C KD
S4	150	810R@300/C ST	810R@300/C KD
S5	185	1010R@300/C ST	1010R@300/C KD
S6	185	1010R@250/C KD	1010R@300/C KD

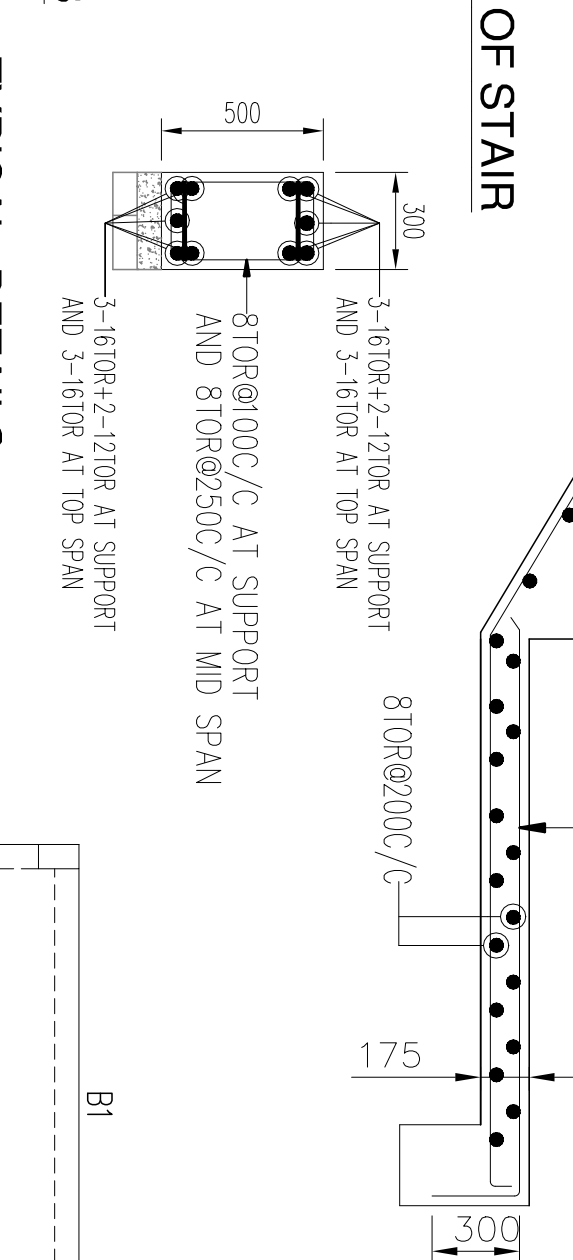
TYPICAL OF DETAIL COLUMN BEAM JUNCTIONS



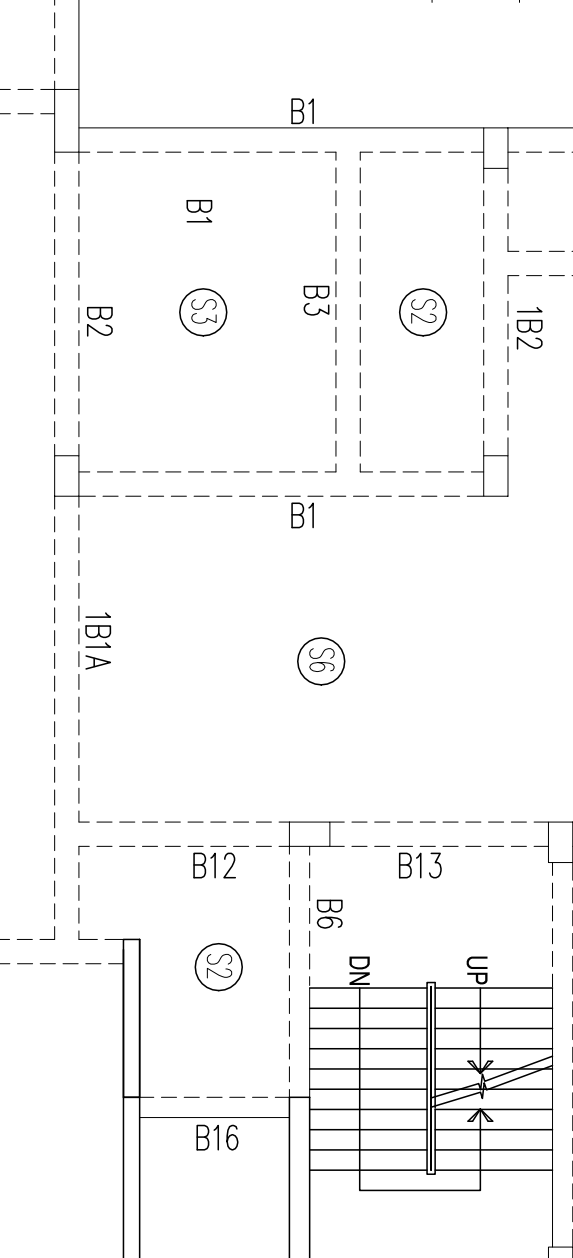
TYPICAL REINFORCEMENT SHOWING OF CONTINUOUS BEAM



TYPICAL REINFORCEMENT SHOWING OF FLOOR SLAB



TYPICAL DETAILS TB-1 (300x500)



TYPICAL DETAILS TB-2 (300x500)



COLUMN SCHEDULE

GRADE OF CONCRETE - M25	3RD FLOOR TO ROOF		2ND FLOOR TO 3RD FLOOR		1ST FLOOR TO 2ND FLOOR		FOUNDATION TO 1ST FLOOR		LINK		CS OF COLUMN		LINK DETAILS		COL SIZE		COL MARKED	
6-16TOR+6-12TOR	6-16TOR+8-12TOR	6-16TOR+6-12TOR	6-16TOR+8-12TOR	6-16TOR+8-12TOR	6-20TOR+8-16TOR	6-20TOR+8-16TOR	6-20TOR+8-16TOR	6-20TOR	810R@100C/C AND 810R@500C/C	810R@100C/C	810R@100C/C	300x500	300x500	300x600	300x725	300x500	300x500	300x500

SCHEDULE OF COLUMN FOOTINGS (CONC.GR M25)

FOOTING MKD	SIZE	THICKNESS	D	d	REINFORCEMENT AT SHORTER DIRECTION (a)	REINFORCEMENT AT LONGER DIRECTION (b)
F1	1750x1750	450	225	120R@250/C	120R@250/C	
F2	2000x2000	500	250	120R@250/C	120R@250/C	
F3	2250x2250	600	300	120R@250/C	120R@250/C	
F4	2500x2500	750	375	120R@250/C	120R@250/C	
F5	2750x2750	750	375	160R@500C/C	160R@500C/C	
F6	3000x3000	750	375	160R@500C/C	160R@500C/C	
F7	AS/DWC	750	750	160R@500C/C	160R@500C/C	

THE BEAM SCHEDULE

GRADE OF CONCRETE - M25	BEAM MKD		REINFT. AT SUPPORT		REINFT. AT MID SPAN		STIRRUPS AT SUPP(10x3)	STIRRUPS AT SPAN
WIDE	DEPTH	TOP	BOTTOM	TOP	BOTTOM			
TB1	300	500	3-16TOR	3-16TOR+2-12TOR	3-16TOR	3-16TOR	810R100C/C	810R200C/C
TB2	300	500	3-16TOR	3-16TOR	3-16TOR	3-16TOR	810R100C/C	810R200C/C
TB3	300	500	4-16TOR+1-12TOR	3-16TOR	3-16TOR	2-16TOR+1-12TOR	810R100C/C	810R150C/C
TB4	250	500	3-16TOR	3-16TOR	3-16TOR	3-16TOR	810R100C/C	810R100C/C
TB5	300	500	3-16TOR	3-16TOR	3-16TOR	3-16TOR	810R100C/C	810R100C/C
TB6	300	500	4-16TOR+1-12TOR	3-16TOR	3-16TOR	2-16TOR+1-12TOR	810R100C/C	810R150C/C

NOTES:

- ALL DIMENSIONS ARE IN MM UNLESS OTHERWISE MENTIONED.
- BRICK SHALL BE TYPE I CLASS.
- ALL GRADE OF CONCRETE M25 (1:1:2)
- ALL MATERIALS SHALL CONFORM TO RELEVANT IS CODES.
- TOP STEEL GRADE F_y 500 AS PER IS 1786-2008
- TOP STEEL GRADE F_y 250 AS PER IS 1786-2008
- FOUNDATION & PLINTH: BRICKWORK IN 1:6 CEMENT MORTAR SHALL BE OF 1ST CLASSIFIED IN 15 CEMENT MORTAR.
- MINIMUM CLEAR COVER TO MAIN REINFORCEMENT IS AS FOLLOWS:
 - a) FOUNDATION BEAM & SLAB: 50
 - b) COLUMN: 50
 - c) BEAM: 50
 - d) FLOOR BEAM: 30
 - e) FLOOR SLAB: 20

DECLARATION BY STRUCTURAL ENGR.

THE STRUCTURAL DESIGN AND DRAWING OF BOTH FOUNDATION AND SUPER STRUCTURE OF THE BUILDING HAS BEEN MADE BY THE CONSULTING ALL POSSIBLE LOADS INCLUDING THE SEISMIC LOAD AS PER THE NATIONAL BUILDING CODE OF INDIA AND CERTIFIED THAT IT IS SAFE AND STABLE IN ALL RESPECT. ADOPTIVE SHALL BE HELD RESPONSIBLE FOR ANY STRUCTURE OVERLOADS OR FAILURE OCCURRING DURING CONSTRUCTION PERIOD AND THEREAFTER UPON DATE OF FINING OCCUPANCY CERTIFICATE.

SOURIN AADK
SAC, Engineer No. 24
E-2019, Nr. Kothari Tower
EXT. No. 431025467
Mob No. 9820000000
sourin_aadk@yahoo.com

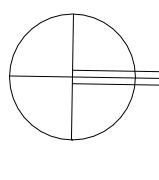
SIGN OF STRUCTURAL ENGR.

PROJECT
PROPOSED G+3 STORED RESIDENTIAL CUM COMMERCIAL BUILDING AT AGRASEN ROAD, KHAL PARA
LAND SCHEDULE :-
MOLUZA - SILIGURI (OLD),
SILIGURI MADHYA PASCHIM (NEW)
OLD J.L. NO. :110 (89), NEW J.L. NO. :90
PLOT NO. 6075 (L.R.), 3000, 3001 (3002 (R.S)
KHALAN NO. 5854 (L.R.), 582, 375 (R.S)
WARD NO. 9 (N.S)
P.S. SILIGURI
DIST. DARJEELING

OWNER
"LANDMARK BUILDERS AND DEVELOPERS"
REPRESENTED BY ONE OF ITS PARTNER SRI. ALAY ASGARWAL
SINGHANAYA, 50, LAKE SHANKAR LAL ASGARWAL

TITLE
STRUCTURAL CORPORATION DRAWING
ARCHITECTS
GREEN ARCHITECTURE CONSULTING
ENGINEERS PVT. LTD.
B.R. ARBIBDAR COMPLEX,
HILL CART ROAD,
SILIGURI - 734003

CONSULTING ENGINEERS
SGSFO Consultants Pvt. Ltd.
Kopara - 730010
Relaxing Main Road
(Opposite - GST Bazaar)
E-mail: ssc@sgsfo.com
Phone: 9820000000
Fax: 9820000000



DATE: 03.06.2022
SCALE: 1:100/25
DRAWN BY: Minal
CHECKED BY: Minal
JOB NO.: SGSFPRK/RD/2022/03
DRG. NO.: SGSFPRK/RD/2022/03/CS-01

