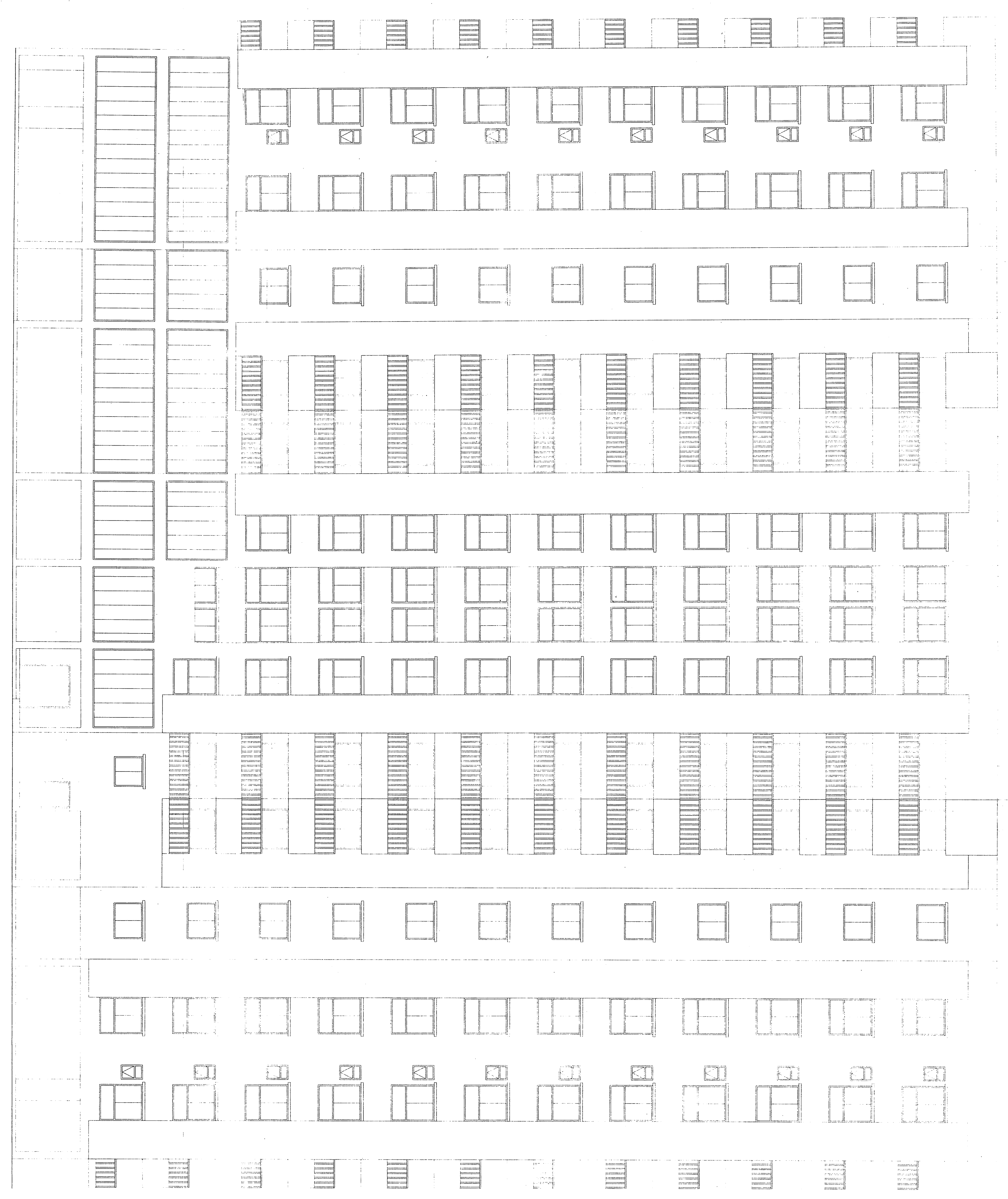
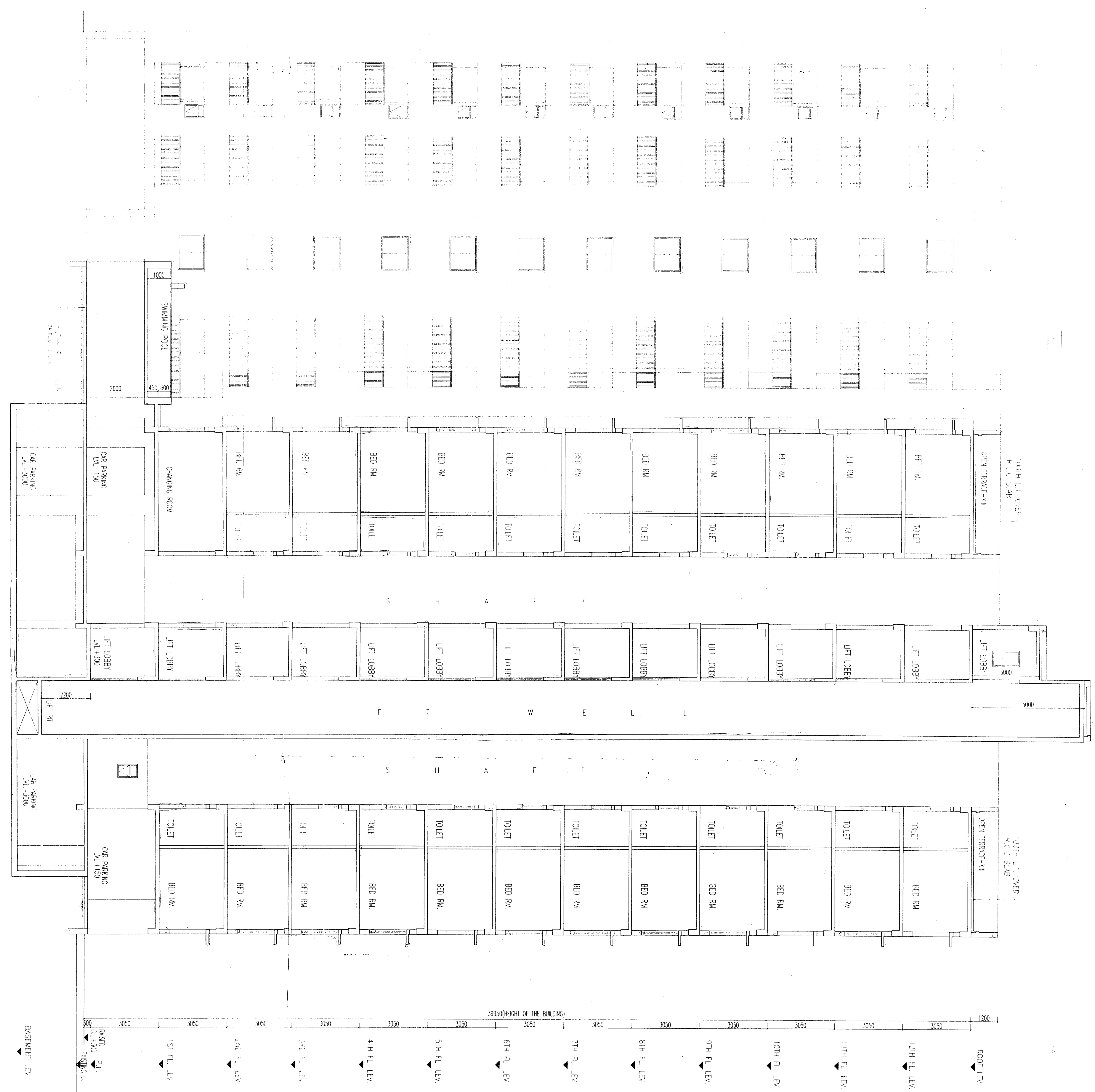


SOUTH SIDE ELEVATION
SCALE: 1:100



SECTION AT-AA
SCALE: 1:100



SCHEDULE OF DOORS & WINDOWS

ITEM	QTY	DESCRIPTION	UNIT	QTY	UNIT PRICE	TOTAL
D1	10	1000x2100	WT	1000	150000.00	150000.00
D2	10	1000x2100	WT	1000	150000.00	150000.00
D3	10	1000x2100	WT	1000	150000.00	150000.00
D4	10	1000x2100	WT	1000	150000.00	150000.00
D5	10	1000x2100	WT	1000	150000.00	150000.00
D6	10	1000x2100	WT	1000	150000.00	150000.00
D7	10	1000x2100	WT	1000	150000.00	150000.00
D8	10	1000x2100	WT	1000	150000.00	150000.00
D9	10	1000x2100	WT	1000	150000.00	150000.00
D10	10	1000x2100	WT	1000	150000.00	150000.00
D11	10	1000x2100	WT	1000	150000.00	150000.00
D12	10	1000x2100	WT	1000	150000.00	150000.00
D13	10	1000x2100	WT	1000	150000.00	150000.00
D14	10	1000x2100	WT	1000	150000.00	150000.00
D15	10	1000x2100	WT	1000	150000.00	150000.00
D16	10	1000x2100	WT	1000	150000.00	150000.00
D17	10	1000x2100	WT	1000	150000.00	150000.00
D18	10	1000x2100	WT	1000	150000.00	150000.00
D19	10	1000x2100	WT	1000	150000.00	150000.00
D20	10	1000x2100	WT	1000	150000.00	150000.00

GENERAL NOTES

1. ALL DIMENSIONS ARE IN MM.
2. ALL WORK IS TO BE DONE IN ACCORDANCE WITH THE SPECIFICATIONS AND DRAWINGS.
3. THE CONTRACTOR SHALL BE RESPONSIBLE FOR OBTAINING ALL NECESSARY PERMITS AND APPROVALS.
4. THE CONTRACTOR SHALL MAINTAIN ACCESS TO ALL SERVICES AT ALL TIMES.
5. THE CONTRACTOR SHALL PROTECT ALL EXISTING SERVICES AND STRUCTURES.
6. THE CONTRACTOR SHALL MAINTAIN THE SITE AT ALL TIMES.
7. THE CONTRACTOR SHALL MAINTAIN THE SITE AT ALL TIMES.
8. THE CONTRACTOR SHALL MAINTAIN THE SITE AT ALL TIMES.
9. THE CONTRACTOR SHALL MAINTAIN THE SITE AT ALL TIMES.
10. THE CONTRACTOR SHALL MAINTAIN THE SITE AT ALL TIMES.
11. THE CONTRACTOR SHALL MAINTAIN THE SITE AT ALL TIMES.
12. THE CONTRACTOR SHALL MAINTAIN THE SITE AT ALL TIMES.
13. THE CONTRACTOR SHALL MAINTAIN THE SITE AT ALL TIMES.

6-1-B
Rajaram Anand
Member of Council of Architects
SIGNATURE OF ARCHITECT I.A.S.

ASHIM KUMAR DAS
REGISTERED ARCHITECT
(E & A-1000 (E&A.C.))
SIGNATURE OF ARCHITECT I.A.S.

DR. SULTAN KUMAR BOSE
REGISTERED ARCHITECT
(E & A-1000 (E&A.C.))
SIGNATURE OF ARCHITECT I.A.S.

NAVJIT KARKI
REGISTERED ARCHITECT
(E & A-1000 (E&A.C.))
SIGNATURE OF ARCHITECT I.A.S.

SHRUTI KUMAR
REGISTERED ARCHITECT
(E & A-1000 (E&A.C.))
SIGNATURE OF ARCHITECT I.A.S.

DR. SULTAN KUMAR BOSE
REGISTERED ARCHITECT
(E & A-1000 (E&A.C.))
SIGNATURE OF ARCHITECT I.A.S.

DR. SULTAN KUMAR BOSE
REGISTERED ARCHITECT
(E & A-1000 (E&A.C.))
SIGNATURE OF ARCHITECT I.A.S.

Project location: 100, 1st floor, 2nd floor, 3rd floor, 4th floor, 5th floor, 6th floor, 7th floor, 8th floor, 9th floor, 10th floor, 11th floor, 12th floor, 13th floor, 14th floor, 15th floor, 16th floor, 17th floor, 18th floor, 19th floor, 20th floor, 21st floor, 22nd floor, 23rd floor, 24th floor, 25th floor, 26th floor, 27th floor, 28th floor, 29th floor, 30th floor, 31st floor, 32nd floor, 33rd floor, 34th floor, 35th floor, 36th floor, 37th floor, 38th floor, 39th floor, 40th floor, 41st floor, 42nd floor, 43rd floor, 44th floor, 45th floor, 46th floor, 47th floor, 48th floor, 49th floor, 50th floor, 51st floor, 52nd floor, 53rd floor, 54th floor, 55th floor, 56th floor, 57th floor, 58th floor, 59th floor, 60th floor, 61st floor, 62nd floor, 63rd floor, 64th floor, 65th floor, 66th floor, 67th floor, 68th floor, 69th floor, 70th floor, 71st floor, 72nd floor, 73rd floor, 74th floor, 75th floor, 76th floor, 77th floor, 78th floor, 79th floor, 80th floor, 81st floor, 82nd floor, 83rd floor, 84th floor, 85th floor, 86th floor, 87th floor, 88th floor, 89th floor, 90th floor, 91st floor, 92nd floor, 93rd floor, 94th floor, 95th floor, 96th floor, 97th floor, 98th floor, 99th floor, 100th floor.

RAJ MADHUKAR & ASSOCIATES
Architects
100, 1st floor, 2nd floor, 3rd floor, 4th floor, 5th floor, 6th floor, 7th floor, 8th floor, 9th floor, 10th floor, 11th floor, 12th floor, 13th floor, 14th floor, 15th floor, 16th floor, 17th floor, 18th floor, 19th floor, 20th floor, 21st floor, 22nd floor, 23rd floor, 24th floor, 25th floor, 26th floor, 27th floor, 28th floor, 29th floor, 30th floor, 31st floor, 32nd floor, 33rd floor, 34th floor, 35th floor, 36th floor, 37th floor, 38th floor, 39th floor, 40th floor, 41st floor, 42nd floor, 43rd floor, 44th floor, 45th floor, 46th floor, 47th floor, 48th floor, 49th floor, 50th floor, 51st floor, 52nd floor, 53rd floor, 54th floor, 55th floor, 56th floor, 57th floor, 58th floor, 59th floor, 60th floor, 61st floor, 62nd floor, 63rd floor, 64th floor, 65th floor, 66th floor, 67th floor, 68th floor, 69th floor, 70th floor, 71st floor, 72nd floor, 73rd floor, 74th floor, 75th floor, 76th floor, 77th floor, 78th floor, 79th floor, 80th floor, 81st floor, 82nd floor, 83rd floor, 84th floor, 85th floor, 86th floor, 87th floor, 88th floor, 89th floor, 90th floor, 91st floor, 92nd floor, 93rd floor, 94th floor, 95th floor, 96th floor, 97th floor, 98th floor, 99th floor, 100th floor.