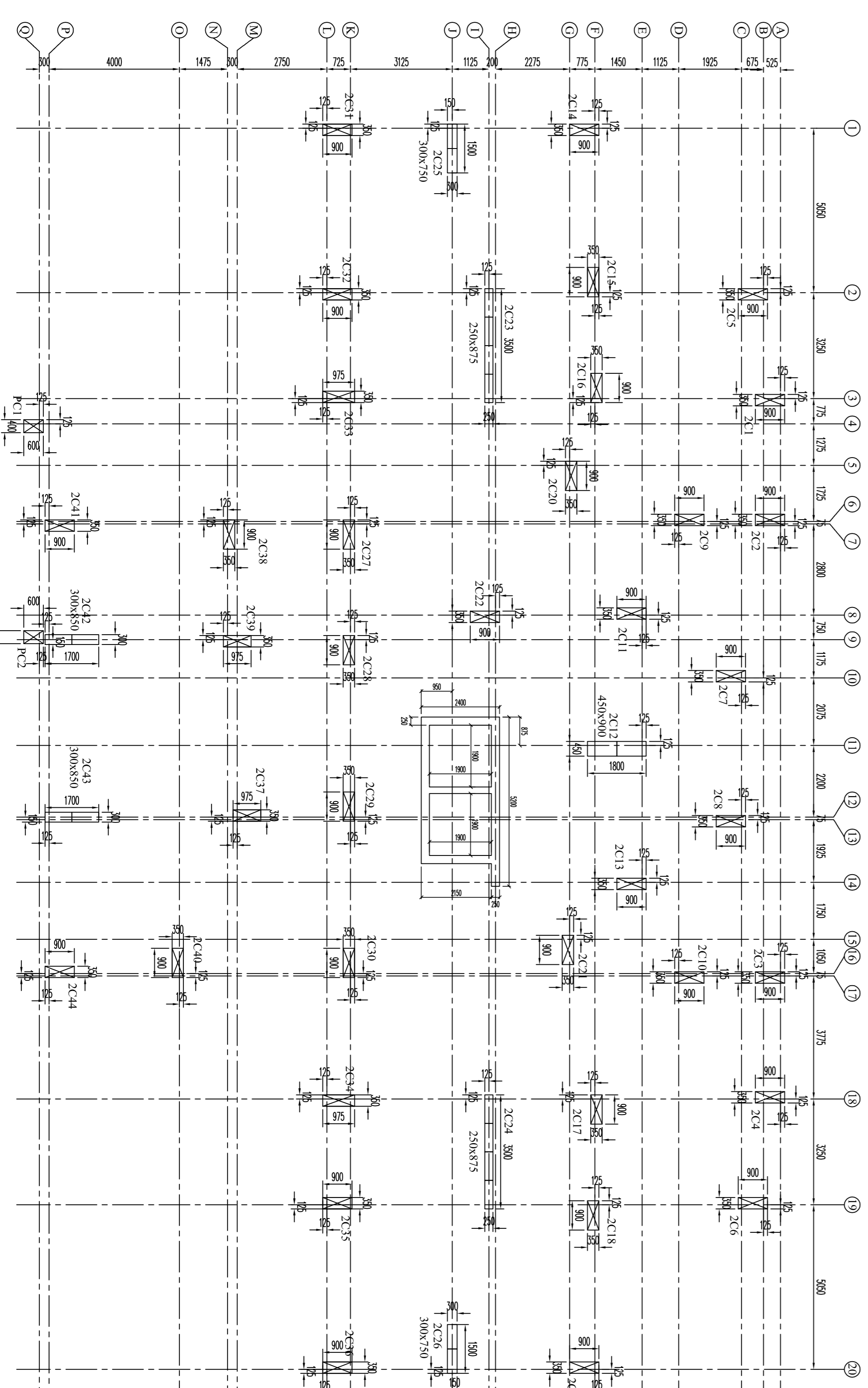


TIE BEAM LAYOUT PLAN
BLOCK-2 (G+14)



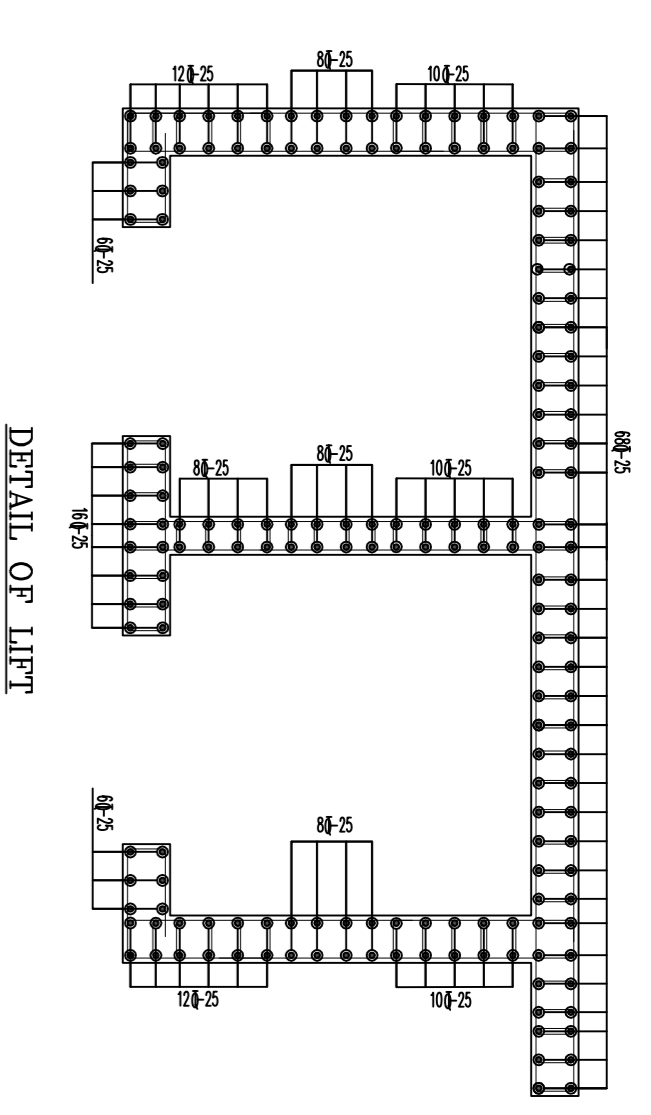
COLUMN LAYOUT PLAN
BLOCK-2 (G+14)

SCHEDULE OF THE BEAM (M30 AND FE 500)

MKD.	SIZE (MMxMM)	TOP ALTH	EXTD SUPD	BOTT. ALTH	EXTD SPAN	STIRRUPS (2 LEGGED)
TB1	250x600	4-20	-	4-20	-	AT SUPPORT @ 80mm c/c AT SPAN @ 80mm c/c

SCHEDULE OF COLUMN :- (FE 500)

CR. OF CONCRETE	SIZE (MMxMM)	GROUND TO 7TH	7TH TO ROOF	STIRRUPS
M-40	M-40	M-40	M-40	STIRRUPS
201	350x900	8-200H+8-1601	16-1601	8mm @200mm c/c spaced @ 100 mm c/c near junctions.
202	350x900	8-250H+8-2001	16-2001	
203	350x900	8-250H+8-2001	16-2001	
204	350x900	8-200H+8-1601	16-1601	
205	350x900	8-200H+8-1601	16-1601	
206	350x900	8-200H+8-1601	16-1601	
207	350x900	8-200H+8-1601	8-200H+8-1601	
208	350x900	8-200H+8-1601	8-200H+8-1601	
209	350x900	8-200H+8-1601	16-1601	
210	350x900	8-200H+8-1601	16-1601	
211	350x900	16-2501	8-250H+8-2001	
212	450x900	6-200H+2-1601	4-200H+4-1601	
213	350x900	16-2501	8-250H+8-2001	
214	350x900	8-200H+8-1601	16-1601	
215	350x900	8-200H+8-1601	4-200H+2-1601	
216	350x900	8-200H+8-1601	16-1601	
217	350x900	8-200H+8-1601	4-200H+2-1601	
218	350x900	8-200H+8-1601	16-1601	
219	350x900	8-200H+8-1601	16-1601	
220	350x900	8-200H+8-1601	4-200H+2-1601	
221	350x900	8-250H+8-2001	4-200H+2-1601	
222	350x900	16-2501	16-2501	
223	250x300	32-200H+6-1601	16-200H+2-1601	
224	250x300	32-200H+6-1601	16-200H+2-1601	
225	300x300	16-200H+8-1601	8-200H+8-1601	
226	300x300	16-200H+8-1601	8-200H+8-1601	
227	350x900	8-200H+8-1601	4-200H+2-1601	
228	350x900	8-250H+8-2001	16-2001	
229	350x900	8-250H+8-2001	16-2001	
230	350x900	16-2001	4-200H+2-1601	
231	350x900	8-200H+8-1601	16-1601	
232	350x900	8-200H+8-1601	16-1601	
233	350x900	8-200H+8-1601	16-1601	
234	350x900	8-200H+8-1601	16-1601	
235	350x900	8-200H+8-1601	16-1601	
236	350x900	8-200H+8-1601	16-1601	
237	350x900	8-250H+8-2001	4-200H+2-1601	
238	350x900	8-200H+8-1601	4-200H+2-1601	
239	350x900	8-200H+8-1601	4-200H+2-1601	
240	350x900	8-200H+8-1601	4-200H+2-1601	
241	350x900	8-200H+8-1601	4-200H+2-1601	
242	300x700	8-200H+8-1601	24-1601	
243	300x700	8-200H+8-1601	24-1601	
244	350x900	8-200H+8-1601	4-200H+2-1601	
PC1	400x600	12-2001 (UP TO OPEN TERRACE)		
PC2	400x600	12-2001 (UP TO OPEN TERRACE)		



MRITTIKA BUILDERS
OWNERS

CERTIFICATE OF STRUCTURAL ENGINEER

CERTIFIED THAT THE STRUCTURAL FOUNDATION & SUPER STRUCTURE MADE BY ME CONSIDERING ALL POSSIBLE LOADS INCLUDING THE LOADS OF FUTURE FLOORS AND CERTIFIED THAT IT IS SAFE & STABLE IN ALL RESPECTS.

DIPANKAR BHOWMIK
B.E. M.E. CIVIL
ENLISTMENT NO. SE
STRIP/SONAR/2014-15
RAIPUR SONARPUR MUNICIPALITY
NAME OF STRUCTURAL ENGINEER.

CERTIFICATE OF ARCHITECT

THE E.A. HAS CERTIFIED ON THE PLAN ITSELF WITH FULL RESPONSIBILITY THAT THE BUILDING PLAN HAS BEEN DRAWN UP AS PER THE REQUIREMENTS OF THE APPLICABLE CODES AND STANDARDS AS AMENDED FROM TIME TO TIME AND THAT THE SITE CONDITION INCLUDING THE WIDTH OF THE ABUTTING ROAD CONTRIB WITH THE PLAN AND IT IS A BUILD ABLE SITE AND NOT A TANK OR A FILLED UP TANK.

RAJ KUMAR AGARWAL
ADDRESS:
RAJ AGARWAL & ASSOCIATES
88, ROYD STREET (2nd FLOOR)
KOLKATA-700016
NAME OF ARCHITECT

ALOK ROY
NAME OF GEO.-TECHNICAL ENGINEER

SANJEEV PAREKH
NAME OF STRUCTURAL REVIEWER

TITLE
PLOT - 1 (BLOCK - 2)

FOUNDATION LAYOUT PLAN AND DETAILS

PROJECT

REVISED G-19 (6000 MT. HT.) & G+14 (4500 MT. HT.) STORED RESIDENTIAL BUILDING COMPLEX AT HOLDING NO. 154 SCHOOL RD. R.S. DNG NO. 8.9.10.20. 51.52.57 & 58. R.S. KHATIAN NO. 61.2510.5218.2995.602. MOUZDA - RAIPUR. TL. NO. 55. WARD NO. 26. P.S. SONARPUR. DIST. - 24NGSS). UNDER RAIPUR SONARPUR MUNICIPALITY.
VIDE SA/NC. PLAN NO. 157/REV./CB/26/21. DT- 05/09/2016.

OWNERS NAME
I.MRITTIKA BUILDERS PVT. LTD. & OTHERS.

DATE | **JOB NO.** | **DEALT** | **CHECKED** | **SHEET NO.**
15/07/15 | ANKUR/2521 | SONAR/ANISH | ANISH | 3 OF 5

SCALE
1:100

ARCHITECT
RAJ AGARWAL & ASSOCIATES
88 ROYD STREET, KOLKATA-16

SOLE CONSULTANT
Sanjayson Associates
CONSULTANT IN CIVIL ENGINEERING
KOLKATA-700016

SCALE
1:100

ARCHITECT
RAJ AGARWAL & ASSOCIATES
88 ROYD STREET, KOLKATA-16