

FOUNDATION SCHEDULE		REINFORCEMENT	
PN	F.D.N UNDER COLUMN	F.D.N SIZE	d
1	C1	20X20X200	200
2	C2	20X20X200	200
3	C3	20X20X200	200
4	C4	20X20X200	200
5	C5	20X20X200	200
6	C6	20X20X200	200
7	C7	20X20X200	200
8	C8	20X20X200	200
9	C9	20X20X200	200
10	C10	20X20X200	200
11	C11	20X20X200	200
12	C12	20X20X200	200
13	C13	20X20X200	200
14	C14	20X20X200	200
15	C15	20X20X200	200
16	C16	20X20X200	200
17	C17	20X20X200	200
18	C18	20X20X200	200
19	C19	20X20X200	200
20	C20	20X20X200	200

BEAM SCHEDULE		REIN (SUPPORT)		REIN (SPAN)		STIRRUP	
BEAM MKD.	SECTION	TOP	BOTTOM	TOP	BOTTOM	TOP	BOTTOM
B1	20X300	5-12 @ 150	5-12 @ 150	5-12 @ 150	5-12 @ 150	2L-8T@150/c/c	
B1A	20X300	3-16 @ 150	3-16 @ 150	4-16 @ 150	4-16 @ 150	2L-8T@150/c/c	
B1B	20X300	2-12 @ 150	2-12 @ 150	4-16 @ 150	4-16 @ 150	2L-8T@150/c/c	
B2	20X300	2-12 @ 150	2-12 @ 150	4-16 @ 150	4-16 @ 150	2L-8T@150/c/c	
B3	20X400	3-16 @ 150	3-16 @ 150	5-16 @ 150	5-16 @ 150	2L-8T@150/c/c	
B4	20X400	2-16 @ 150	2-16 @ 150	4-16 @ 150	4-16 @ 150	2L-8T@150/c/c	
B5	20X400	3-16 @ 150	3-16 @ 150	4-16 @ 150	4-16 @ 150	2L-8T@150/c/c	
B6	20X400	3-16 @ 150	3-16 @ 150	4-16 @ 150	4-16 @ 150	2L-8T@150/c/c	
B7	20X400	2-16 @ 150	2-16 @ 150	4-16 @ 150	4-16 @ 150	2L-8T@150/c/c	
B8	20X400	3-16 @ 150	3-16 @ 150	4-16 @ 150	4-16 @ 150	2L-8T@150/c/c	
B9	20X400	2-16 @ 150	2-16 @ 150	4-16 @ 150	4-16 @ 150	2L-8T@150/c/c	
B10	20X400	3-16 @ 150	3-16 @ 150	4-16 @ 150	4-16 @ 150	2L-8T@150/c/c	
B11	20X400	2-16 @ 150	2-16 @ 150	4-16 @ 150	4-16 @ 150	2L-8T@150/c/c	
B12	20X400	3-16 @ 150	3-16 @ 150	4-16 @ 150	4-16 @ 150	2L-8T@150/c/c	
B13	20X400	2-16 @ 150	2-16 @ 150	4-16 @ 150	4-16 @ 150	2L-8T@150/c/c	
B14	20X400	3-16 @ 150	3-16 @ 150	4-16 @ 150	4-16 @ 150	2L-8T@150/c/c	
B15	20X400	2-16 @ 150	2-16 @ 150	4-16 @ 150	4-16 @ 150	2L-8T@150/c/c	
B16	20X400	3-16 @ 150	3-16 @ 150	4-16 @ 150	4-16 @ 150	2L-8T@150/c/c	
B17	20X400	2-16 @ 150	2-16 @ 150	4-16 @ 150	4-16 @ 150	2L-8T@150/c/c	
B18	20X400	3-16 @ 150	3-16 @ 150	4-16 @ 150	4-16 @ 150	2L-8T@150/c/c	
B19	20X400	2-16 @ 150	2-16 @ 150	4-16 @ 150	4-16 @ 150	2L-8T@150/c/c	
B20	20X400	3-16 @ 150	3-16 @ 150	4-16 @ 150	4-16 @ 150	2L-8T@150/c/c	

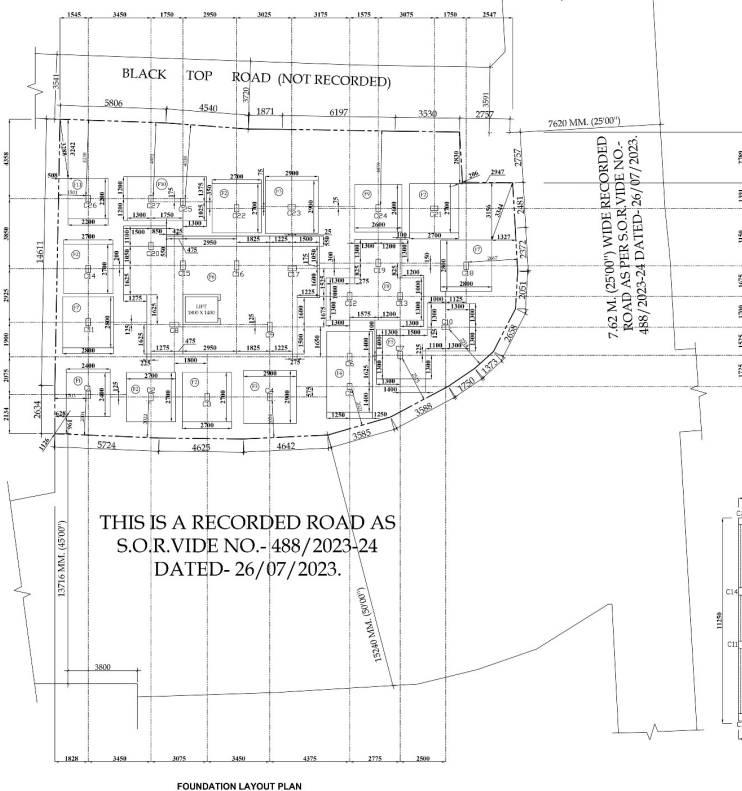
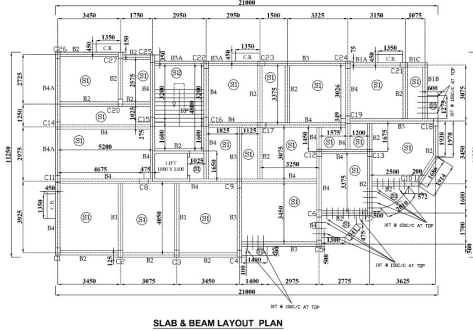
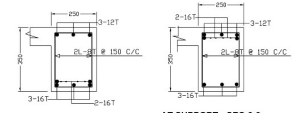
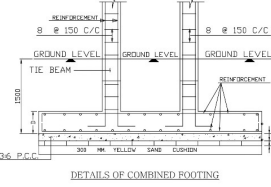
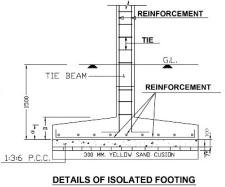
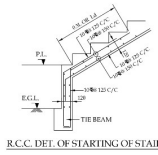
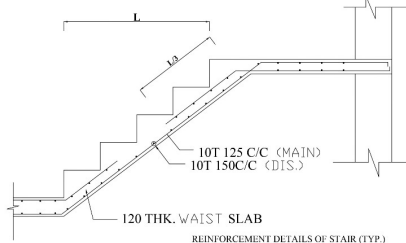
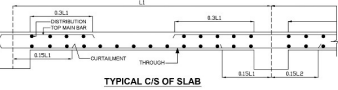
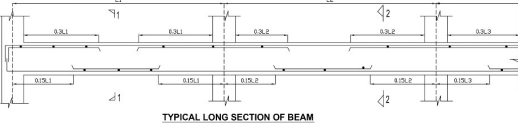
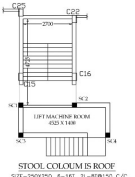
SLAB SCHEDULE		REINFORCEMENT		PROVISION AT CORNERS	
SLAB MKD.	THICKNESS	MAIN REIN	DISTRIBUTION	PROVISION AT CORNERS	AT CORNERS AS EXTRA TOP
S1	120 MM	8 T @ 125 c/c	8 T 150 c/c	8 T 150 c/c	8 T 150 c/c
S2	120 MM	10 T @ 125 c/c	10 T 150 c/c	10 T 150 c/c	10 T 150 c/c

COLUMN SCHEDULE		REINFORCEMENT		TIE	
COLUMN MKD.	SECTION	REINFORCEMENT	TIE	REINFORCEMENT	TIE
C1	20X20	8 T @ 125 c/c	8 T 150 c/c	8 T 150 c/c	8 T 150 c/c
C2	20X20	10 T @ 125 c/c	10 T 150 c/c	10 T 150 c/c	10 T 150 c/c
C3	20X20	12 T @ 125 c/c	12 T 150 c/c	12 T 150 c/c	12 T 150 c/c
C4	20X20	14 T @ 125 c/c	14 T 150 c/c	14 T 150 c/c	14 T 150 c/c
C5	20X20	16 T @ 125 c/c	16 T 150 c/c	16 T 150 c/c	16 T 150 c/c
C6	20X20	18 T @ 125 c/c	18 T 150 c/c	18 T 150 c/c	18 T 150 c/c
C7	20X20	20 T @ 125 c/c	20 T 150 c/c	20 T 150 c/c	20 T 150 c/c
C8	20X20	22 T @ 125 c/c	22 T 150 c/c	22 T 150 c/c	22 T 150 c/c
C9	20X20	24 T @ 125 c/c	24 T 150 c/c	24 T 150 c/c	24 T 150 c/c
C10	20X20	26 T @ 125 c/c	26 T 150 c/c	26 T 150 c/c	26 T 150 c/c
C11	20X20	28 T @ 125 c/c	28 T 150 c/c	28 T 150 c/c	28 T 150 c/c
C12	20X20	30 T @ 125 c/c	30 T 150 c/c	30 T 150 c/c	30 T 150 c/c
C13	20X20	32 T @ 125 c/c	32 T 150 c/c	32 T 150 c/c	32 T 150 c/c
C14	20X20	34 T @ 125 c/c	34 T 150 c/c	34 T 150 c/c	34 T 150 c/c
C15	20X20	36 T @ 125 c/c	36 T 150 c/c	36 T 150 c/c	36 T 150 c/c
C16	20X20	38 T @ 125 c/c	38 T 150 c/c	38 T 150 c/c	38 T 150 c/c
C17	20X20	40 T @ 125 c/c	40 T 150 c/c	40 T 150 c/c	40 T 150 c/c
C18	20X20	42 T @ 125 c/c	42 T 150 c/c	42 T 150 c/c	42 T 150 c/c
C19	20X20	44 T @ 125 c/c	44 T 150 c/c	44 T 150 c/c	44 T 150 c/c
C20	20X20	46 T @ 125 c/c	46 T 150 c/c	46 T 150 c/c	46 T 150 c/c
C21	20X20	48 T @ 125 c/c	48 T 150 c/c	48 T 150 c/c	48 T 150 c/c
C22	20X20	50 T @ 125 c/c	50 T 150 c/c	50 T 150 c/c	50 T 150 c/c
C23	20X20	52 T @ 125 c/c	52 T 150 c/c	52 T 150 c/c	52 T 150 c/c
C24	20X20	54 T @ 125 c/c	54 T 150 c/c	54 T 150 c/c	54 T 150 c/c
C25	20X20	56 T @ 125 c/c	56 T 150 c/c	56 T 150 c/c	56 T 150 c/c
C26	20X20	58 T @ 125 c/c	58 T 150 c/c	58 T 150 c/c	58 T 150 c/c
C27	20X20	60 T @ 125 c/c	60 T 150 c/c	60 T 150 c/c	60 T 150 c/c
C28	20X20	62 T @ 125 c/c	62 T 150 c/c	62 T 150 c/c	62 T 150 c/c
C29	20X20	64 T @ 125 c/c	64 T 150 c/c	64 T 150 c/c	64 T 150 c/c
C30	20X20	66 T @ 125 c/c	66 T 150 c/c	66 T 150 c/c	66 T 150 c/c
C31	20X20	68 T @ 125 c/c	68 T 150 c/c	68 T 150 c/c	68 T 150 c/c
C32	20X20	70 T @ 125 c/c	70 T 150 c/c	70 T 150 c/c	70 T 150 c/c
C33	20X20	72 T @ 125 c/c	72 T 150 c/c	72 T 150 c/c	72 T 150 c/c
C34	20X20	74 T @ 125 c/c	74 T 150 c/c	74 T 150 c/c	74 T 150 c/c
C35	20X20	76 T @ 125 c/c	76 T 150 c/c	76 T 150 c/c	76 T 150 c/c
C36	20X20	78 T @ 125 c/c	78 T 150 c/c	78 T 150 c/c	78 T 150 c/c
C37	20X20	80 T @ 125 c/c	80 T 150 c/c	80 T 150 c/c	80 T 150 c/c
C38	20X20	82 T @ 125 c/c	82 T 150 c/c	82 T 150 c/c	82 T 150 c/c
C39	20X20	84 T @ 125 c/c	84 T 150 c/c	84 T 150 c/c	84 T 150 c/c
C40	20X20	86 T @ 125 c/c	86 T 150 c/c	86 T 150 c/c	86 T 150 c/c
C41	20X20	88 T @ 125 c/c	88 T 150 c/c	88 T 150 c/c	88 T 150 c/c
C42	20X20	90 T @ 125 c/c	90 T 150 c/c	90 T 150 c/c	90 T 150 c/c
C43	20X20	92 T @ 125 c/c	92 T 150 c/c	92 T 150 c/c	92 T 150 c/c
C44	20X20	94 T @ 125 c/c	94 T 150 c/c	94 T 150 c/c	94 T 150 c/c
C45	20X20	96 T @ 125 c/c	96 T 150 c/c	96 T 150 c/c	96 T 150 c/c
C46	20X20	98 T @ 125 c/c	98 T 150 c/c	98 T 150 c/c	98 T 150 c/c
C47	20X20	100 T @ 125 c/c	100 T 150 c/c	100 T 150 c/c	100 T 150 c/c
C48	20X20	102 T @ 125 c/c	102 T 150 c/c	102 T 150 c/c	102 T 150 c/c
C49	20X20	104 T @ 125 c/c	104 T 150 c/c	104 T 150 c/c	104 T 150 c/c
C50	20X20	106 T @ 125 c/c	106 T 150 c/c	106 T 150 c/c	106 T 150 c/c
C51	20X20	108 T @ 125 c/c	108 T 150 c/c	108 T 150 c/c	108 T 150 c/c
C52	20X20	110 T @ 125 c/c	110 T 150 c/c	110 T 150 c/c	110 T 150 c/c
C53	20X20	112 T @ 125 c/c	112 T 150 c/c	112 T 150 c/c	112 T 150 c/c
C54	20X20	114 T @ 125 c/c	114 T 150 c/c	114 T 150 c/c	114 T 150 c/c
C55	20X20	116 T @ 125 c/c	116 T 150 c/c	116 T 150 c/c	116 T 150 c/c
C56	20X20	118 T @ 125 c/c	118 T 150 c/c	118 T 150 c/c	118 T 150 c/c
C57	20X20	120 T @ 125 c/c	120 T 150 c/c	120 T 150 c/c	120 T 150 c/c
C58	20X20	122 T @ 125 c/c	122 T 150 c/c	122 T 150 c/c	122 T 150 c/c
C59	20X20	124 T @ 125 c/c	124 T 150 c/c	124 T 150 c/c	124 T 150 c/c
C60	20X20	126 T @ 125 c/c	126 T 150 c/c	126 T 150 c/c	126 T 150 c/c
C61	20X20	128 T @ 125 c/c	128 T 150 c/c	128 T 150 c/c	128 T 150 c/c
C62	20X20	130 T @ 125 c/c	130 T 150 c/c	130 T 150 c/c	130 T 150 c/c
C63	20X20	132 T @ 125 c/c	132 T 150 c/c	132 T 150 c/c	132 T 150 c/c
C64	20X20	134 T @ 125 c/c	134 T 150 c/c	134 T 150 c/c	134 T 150 c/c
C65	20X20	136 T @ 125 c/c	136 T 150 c/c	136 T 150 c/c	136 T 150 c/c
C66	20X20	138 T @ 125 c/c	138 T 150 c/c	138 T 150 c/c	138 T 150 c/c
C67	20X20	140 T @ 125 c/c	140 T 150 c/c	140 T 150 c/c	140 T 150 c/c
C68	20X20	142 T @ 125 c/c	142 T 150 c/c	142 T 150 c/c	142 T 150 c/c
C69	20X20	144 T @ 125 c/c	144 T 150 c/c	144 T 150 c/c	144 T 150 c/c
C70	20X20	146 T @ 125 c/c	146 T 150 c/c	146 T 150 c/c	146 T 150 c/c
C71	20X20	148 T @ 125 c/c	148 T 150 c/c	148 T 150 c/c	148 T 150 c/c
C72	20X20	150 T @ 125 c/c	150 T 150 c/c	150 T 150 c/c	150 T 150 c/c

COLUMN AND JOINT DETAILING

SP. NOTES:-

1. THE LENGTH "L" SHALL NOT BE LESS THAN EITHER OF THE FOLLOWING: (a) LARGEST LATERAL DIMENSION OF THE MEMBER AT THE SECTION; (b) 1/8 OF CLEAR SPAN OF THE MEMBER; AND (c) 450 MM.



NOTES & SPECIFICATIONS

- ALL DIMENSIONS ARE IN MM UNLESS OTHERWISE MENTIONED.
- GRADE OF CONCRETE: M20 AND GRADE OF STEEL: FE415.
- CENTRE LINE TO BE MAINTAINED AS PER PLAN.
- FOUNDATION: (1) BOTTOM COVER-50MM SHOULD BE MAINTAINED.
- FOUNDATION: (2) BOTTOM COVER-50MM SHOULD BE MAINTAINED.
- FOUNDATION: (3) BOTTOM COVER-50MM SHOULD BE MAINTAINED.
- FOUNDATION: (4) BOTTOM COVER-50MM SHOULD BE MAINTAINED.
- FOUNDATION: (5) BOTTOM COVER-50MM SHOULD BE MAINTAINED.
- FOUNDATION: (6) BOTTOM COVER-50MM SHOULD BE MAINTAINED.
- FOUNDATION: (7) BOTTOM COVER-50MM SHOULD BE MAINTAINED.
- FOUNDATION: (8) BOTTOM COVER-50MM SHOULD BE MAINTAINED.
- FOUNDATION: (9) BOTTOM COVER-50MM SHOULD BE MAINTAINED.
- FOUNDATION: (10) BOTTOM COVER-50MM SHOULD BE MAINTAINED.
- FOUNDATION: (11) BOTTOM COVER-50MM SHOULD BE MAINTAINED.
- FOUNDATION: (12) BOTTOM COVER-50MM SHOULD BE MAINTAINED.
- FOUNDATION: (13) BOTTOM COVER-50MM SHOULD BE MAINTAINED.
- FOUNDATION: (14) BOTTOM COVER-50MM SHOULD BE MAINTAINED.
- FOUNDATION: (15) BOTTOM COVER-50MM SHOULD BE MAINTAINED.
- FOUNDATION: (16) BOTTOM COVER-50MM SHOULD BE MAINTAINED.
- FOUNDATION: (17) BOTTOM COVER-50MM SHOULD BE MAINTAINED.
- FOUNDATION: (18) BOTTOM COVER-50MM SHOULD BE MAINTAINED.
- FOUNDATION: (19) BOTTOM COVER-50MM SHOULD BE MAINTAINED.
- FOUNDATION: (20) BOTTOM COVER-50MM SHOULD BE MAINTAINED.
- FOUNDATION: (21) BOTTOM COVER-50MM SHOULD BE MAINTAINED.
- FOUNDATION: (22) BOTTOM COVER-50MM SHOULD BE MAINTAINED.
- FOUNDATION: (23) BOTTOM COVER-50MM SHOULD BE MAINTAINED.
- FOUNDATION: (24) BOTTOM COVER-50MM SHOULD BE MAINTAINED.
- FOUNDATION: (25) BOTTOM COVER-50MM SHOULD BE MAINTAINED.
- FOUNDATION: (26) BOTTOM COVER-50MM SHOULD BE MAINTAINED.
- FOUNDATION: (27) BOTTOM COVER-50MM SHOULD BE MAINTAINED.
- FOUNDATION: (28) BOTTOM COVER-50MM SHOULD BE MAINTAINED.
- FOUNDATION: (29) BOTTOM