



S.T.P. CAPACITY CALCULATION

TYPE OF FLAT	TOTAL NO. OF FLAT	NO. OF HEADS
2 BHK	96 NOS.	5 X 96 = 480
3 BHK	24 NOS.	6 X 24 = 144
	TOTAL =	624 NOS.

WATER CONSUMPTION PER HEAD FOR DOMESTIC = 150 LITERS.
 TOTAL REQUIREMENT OF WATER CONSUMPTION FOR BUILDINGS = 93600 LITERS.
 (150 X 624)

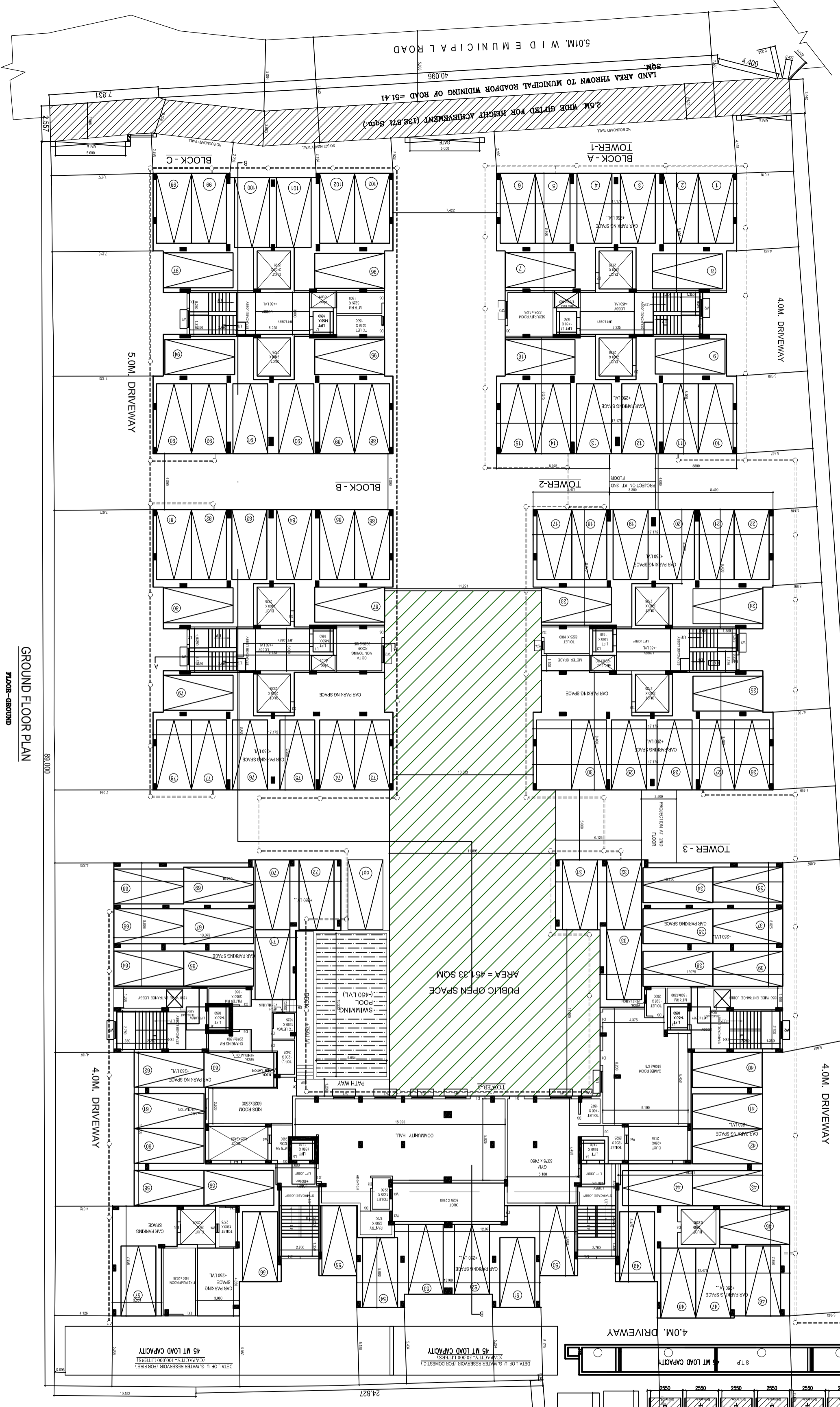
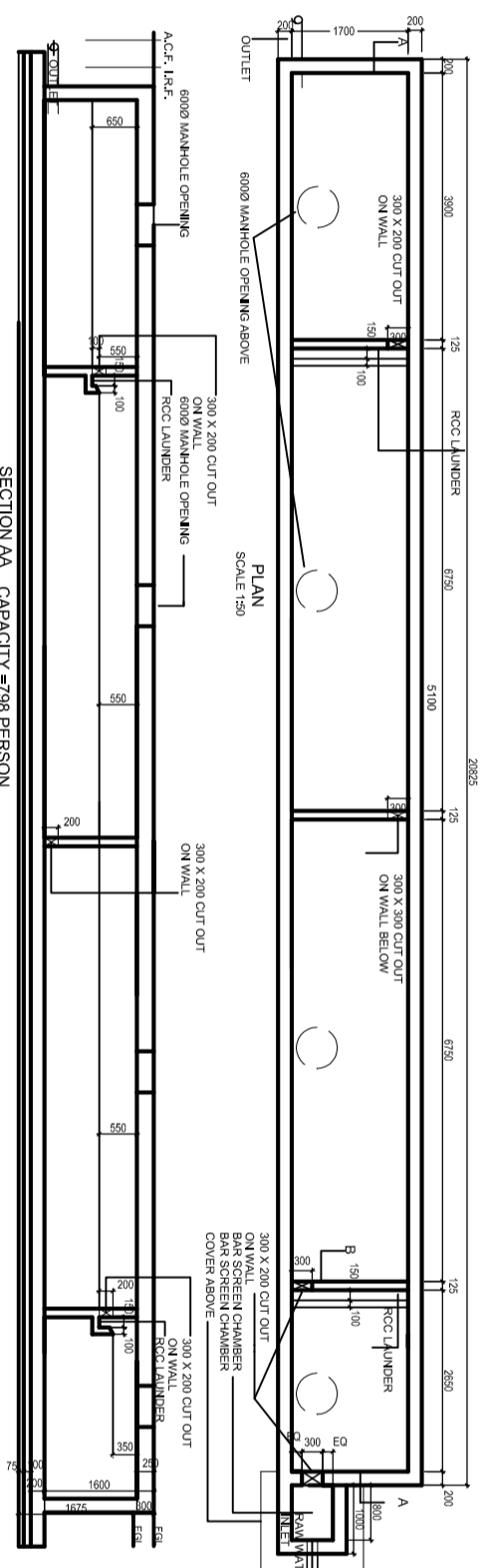
AMENITIES

TYPE OF BLOCK	BUILT-UP AREA	NO. OF HEADS
AMENITIES	313.98 sq.m.	1.8 Sqm.=1 PERSON = 174 NOS.

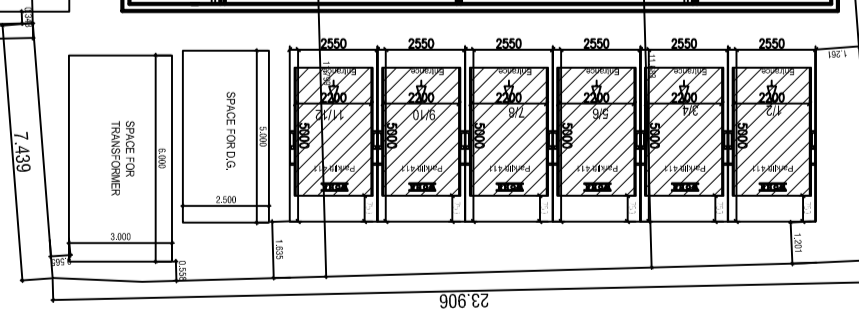
WATER CONSUMPTION PER HEAD FOR AMENITIES = 45 LITS.
 TOTAL REQUIREMENT OF WATER CONSUMPTION FOR AMENITIES = 7830 LITS.
 (45 X 174)

TOTAL REQUIREMENT OF WATER CONSUMPTION FOR FLATS & AMENITIES = 101430 LITS.
 (93600+7830)

CAPACITY OF S.T.P = 101430X0.8 (80% OF TOTAL WATER DEMAND)=81144 LITERS
 = 82 KLD.(APPROX)



GROUND FLOOR PLAN



HOUSE SEWER AND DRAIN LAYOUT DRAWING OF
 REVISED G+IV STORED RESIDENTIAL BUILDING AT
 HOLDING NO. 247, N.S.ROAD, R.S.DAG NO. -
 2256.2402.2298 TO 2301.2401, L.R.DAG NO. -
 2241.2402.2291 TO 2294.2401 R.S. KHATTAN NO.
 499.180.519/520, 426, 212, 254.87, L.R. KHATTAN NO.
 3072.3061,3064,3063,2920,2921,1646,2595
 2022,1647,1644,2588,2023, J.L.NO - 56,WARD NO. - 26,
 MOUZA- UKHILA PAIKPARA, P.S.-SONARPUR,
 DIST.-24PGS.(S).
 UNDER RAJPUR SONARPUR MUNICIPALITY.
 VIDE SANIC PLAN NO.187/CB/28/92; DT.24/01/2022

SARBANI MAJUMDER
 COA. REG. NO. 92/15458
 E.B.A. NO - 055
 UNDER RAJPUR SONARPUR MUNICIPALITY
 NAME OF E.B.A.

RESHMI SAHA AND OTHERS
 OWNERS NAME

