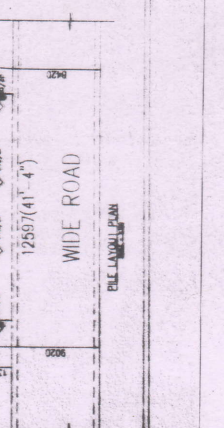
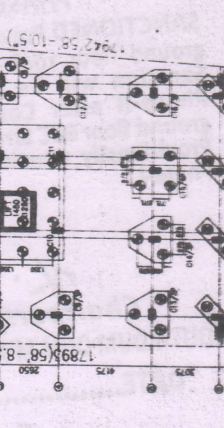
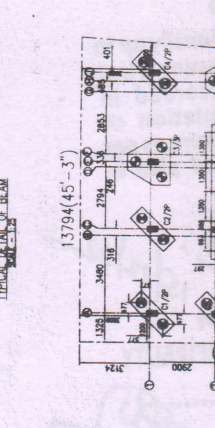
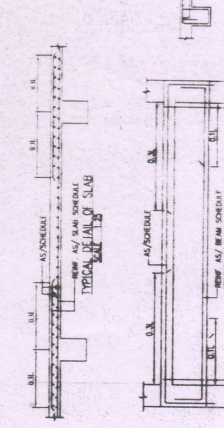
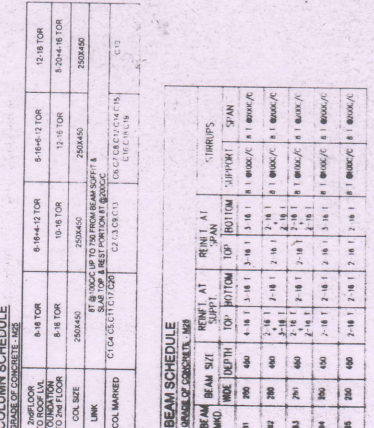
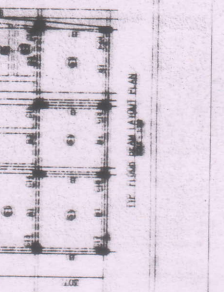
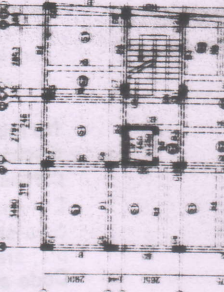
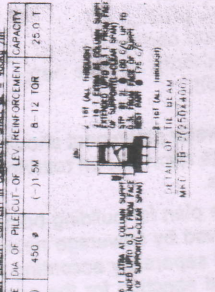
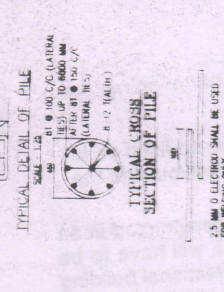
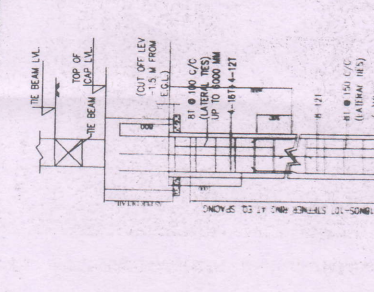


COLUMN SCHEDULE		RANGE OF CONCRETE CLASS	
ZONE FLOOR PROVISION TO 2ND FLOOR	8-18 TOR	8-14 & 12 TOR	13-18 TOR
COL. SIZE	200x450	200x450	200x450
COL. MARKED	C14, C12, C11, C10, C9, C8, C7, C6, C5, C4, C3, C2, C1	C13, C12, C11, C10, C9, C8, C7, C6, C5, C4, C3, C2, C1	C13, C12, C11, C10, C9, C8, C7, C6, C5, C4, C3, C2, C1

BEAM SCHEDULE		RANGE OF CONCRETE CLASS	
ZONE FLOOR PROVISION TO 2ND FLOOR	8-18 TOR	8-14 & 12 TOR	13-18 TOR
COL. SIZE	200x450	200x450	200x450
COL. MARKED	C14, C12, C11, C10, C9, C8, C7, C6, C5, C4, C3, C2, C1	C13, C12, C11, C10, C9, C8, C7, C6, C5, C4, C3, C2, C1	C13, C12, C11, C10, C9, C8, C7, C6, C5, C4, C3, C2, C1

PILE CAP SCHEDULE		RANGE OF CONCRETE CLASS	
TYPE	2P	3P	4P
SIZE	700x700	900x900	1000x1000
REINFORCEMENT IN SHORTER DIRECTION	4-10# C/C (1)	4-10# C/C (1)	4-10# C/C (1)
REINFORCEMENT IN LONGER DIRECTION	4-10# C/C (1)	4-10# C/C (1)	4-10# C/C (1)

SCHEDULE OF FLOOR AND ROOF SLAB		RANGE OF CONCRETE CLASS	
PANEL NO.	1	2	3
REINFORCEMENT IN SHORTER DIRECTION	4-10# C/C (1)	4-10# C/C (1)	4-10# C/C (1)
REINFORCEMENT IN LONGER DIRECTION	4-10# C/C (1)	4-10# C/C (1)	4-10# C/C (1)



PROPOSED FIVE STORED RESIDENTIAL BUILDING PLAN
 NO. 10, BANERJE ATINAJA - SATGACHI - II
 NO. 10, BANERJE ATINAJA - SATGACHI - II
 NO. 10, BANERJE ATINAJA - SATGACHI - II
 NO. 10, BANERJE ATINAJA - SATGACHI - II
 NO. 10, BANERJE ATINAJA - SATGACHI - II

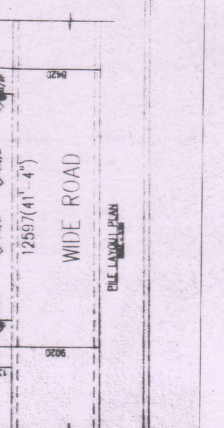
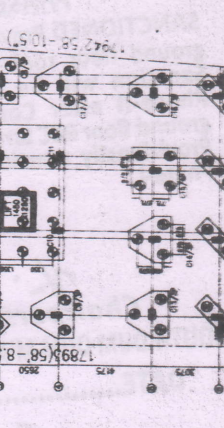
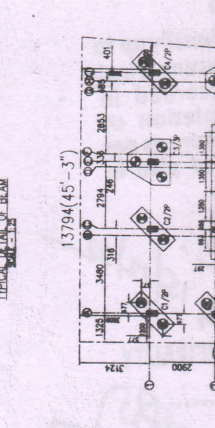
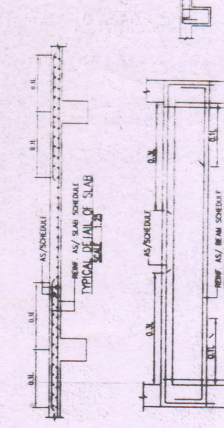
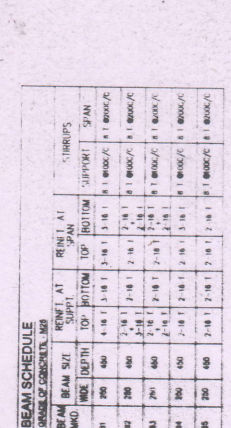
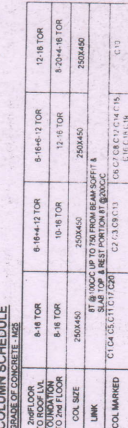
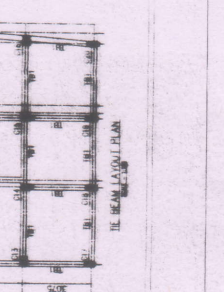
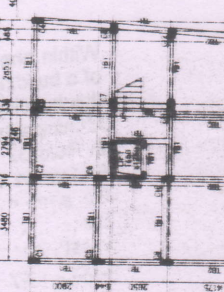
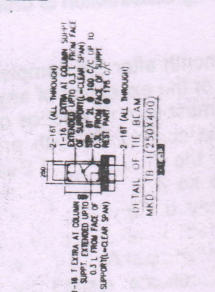
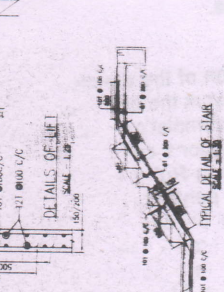
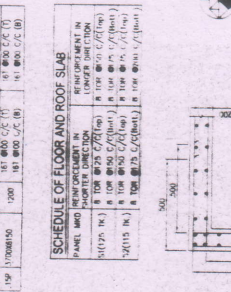
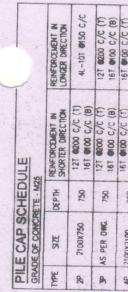
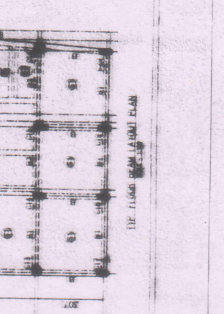
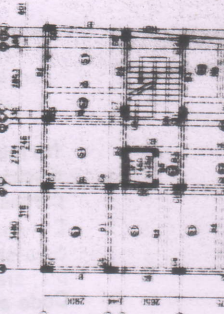
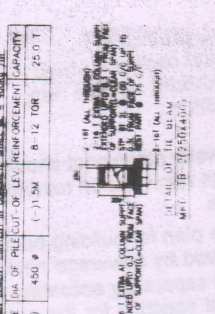
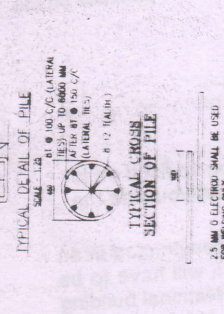
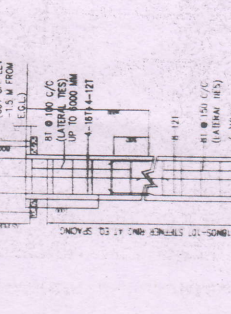
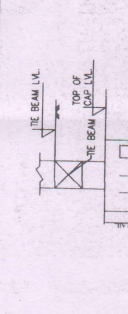
AREA STATEMENT
 TOTAL AREA OF LAND-03 KH. CH. CH. 22.5 SPT - 14,236.20 Sqm
 AREA OF LAND-03 KH. CH. CH. 22.5 SPT - 14,236.20 Sqm
 AREA OF LAND-03 KH. CH. CH. 22.5 SPT - 14,236.20 Sqm
 AREA OF LAND-03 KH. CH. CH. 22.5 SPT - 14,236.20 Sqm
 AREA OF LAND-03 KH. CH. CH. 22.5 SPT - 14,236.20 Sqm

NOTE
 1. ALL DIMENSIONS ARE IN METERS UNLESS OTHERWISE SPECIFIED.
 2. ALL DIMENSIONS ARE TO FACE UNLESS OTHERWISE SPECIFIED.
 3. ALL DIMENSIONS ARE TO FACE UNLESS OTHERWISE SPECIFIED.
 4. ALL DIMENSIONS ARE TO FACE UNLESS OTHERWISE SPECIFIED.
 5. ALL DIMENSIONS ARE TO FACE UNLESS OTHERWISE SPECIFIED.
 6. ALL DIMENSIONS ARE TO FACE UNLESS OTHERWISE SPECIFIED.
 7. ALL DIMENSIONS ARE TO FACE UNLESS OTHERWISE SPECIFIED.
 8. ALL DIMENSIONS ARE TO FACE UNLESS OTHERWISE SPECIFIED.
 9. ALL DIMENSIONS ARE TO FACE UNLESS OTHERWISE SPECIFIED.
 10. ALL DIMENSIONS ARE TO FACE UNLESS OTHERWISE SPECIFIED.
 11. ALL DIMENSIONS ARE TO FACE UNLESS OTHERWISE SPECIFIED.
 12. ALL DIMENSIONS ARE TO FACE UNLESS OTHERWISE SPECIFIED.
 13. ALL DIMENSIONS ARE TO FACE UNLESS OTHERWISE SPECIFIED.
 14. ALL DIMENSIONS ARE TO FACE UNLESS OTHERWISE SPECIFIED.
 15. ALL DIMENSIONS ARE TO FACE UNLESS OTHERWISE SPECIFIED.

GENERAL NOTE
 1. ALL DIMENSIONS ARE TO FACE UNLESS OTHERWISE SPECIFIED.
 2. ALL DIMENSIONS ARE TO FACE UNLESS OTHERWISE SPECIFIED.
 3. ALL DIMENSIONS ARE TO FACE UNLESS OTHERWISE SPECIFIED.
 4. ALL DIMENSIONS ARE TO FACE UNLESS OTHERWISE SPECIFIED.
 5. ALL DIMENSIONS ARE TO FACE UNLESS OTHERWISE SPECIFIED.
 6. ALL DIMENSIONS ARE TO FACE UNLESS OTHERWISE SPECIFIED.
 7. ALL DIMENSIONS ARE TO FACE UNLESS OTHERWISE SPECIFIED.
 8. ALL DIMENSIONS ARE TO FACE UNLESS OTHERWISE SPECIFIED.
 9. ALL DIMENSIONS ARE TO FACE UNLESS OTHERWISE SPECIFIED.
 10. ALL DIMENSIONS ARE TO FACE UNLESS OTHERWISE SPECIFIED.
 11. ALL DIMENSIONS ARE TO FACE UNLESS OTHERWISE SPECIFIED.
 12. ALL DIMENSIONS ARE TO FACE UNLESS OTHERWISE SPECIFIED.
 13. ALL DIMENSIONS ARE TO FACE UNLESS OTHERWISE SPECIFIED.
 14. ALL DIMENSIONS ARE TO FACE UNLESS OTHERWISE SPECIFIED.
 15. ALL DIMENSIONS ARE TO FACE UNLESS OTHERWISE SPECIFIED.

GENERAL NOTE
 1. ALL DIMENSIONS ARE TO FACE UNLESS OTHERWISE SPECIFIED.
 2. ALL DIMENSIONS ARE TO FACE UNLESS OTHERWISE SPECIFIED.
 3. ALL DIMENSIONS ARE TO FACE UNLESS OTHERWISE SPECIFIED.
 4. ALL DIMENSIONS ARE TO FACE UNLESS OTHERWISE SPECIFIED.
 5. ALL DIMENSIONS ARE TO FACE UNLESS OTHERWISE SPECIFIED.
 6. ALL DIMENSIONS ARE TO FACE UNLESS OTHERWISE SPECIFIED.
 7. ALL DIMENSIONS ARE TO FACE UNLESS OTHERWISE SPECIFIED.
 8. ALL DIMENSIONS ARE TO FACE UNLESS OTHERWISE SPECIFIED.
 9. ALL DIMENSIONS ARE TO FACE UNLESS OTHERWISE SPECIFIED.
 10. ALL DIMENSIONS ARE TO FACE UNLESS OTHERWISE SPECIFIED.
 11. ALL DIMENSIONS ARE TO FACE UNLESS OTHERWISE SPECIFIED.
 12. ALL DIMENSIONS ARE TO FACE UNLESS OTHERWISE SPECIFIED.
 13. ALL DIMENSIONS ARE TO FACE UNLESS OTHERWISE SPECIFIED.
 14. ALL DIMENSIONS ARE TO FACE UNLESS OTHERWISE SPECIFIED.
 15. ALL DIMENSIONS ARE TO FACE UNLESS OTHERWISE SPECIFIED.

GENERAL NOTE
 1. ALL DIMENSIONS ARE TO FACE UNLESS OTHERWISE SPECIFIED.
 2. ALL DIMENSIONS ARE TO FACE UNLESS OTHERWISE SPECIFIED.
 3. ALL DIMENSIONS ARE TO FACE UNLESS OTHERWISE SPECIFIED.
 4. ALL DIMENSIONS ARE TO FACE UNLESS OTHERWISE SPECIFIED.
 5. ALL DIMENSIONS ARE TO FACE UNLESS OTHERWISE SPECIFIED.
 6. ALL DIMENSIONS ARE TO FACE UNLESS OTHERWISE SPECIFIED.
 7. ALL DIMENSIONS ARE TO FACE UNLESS OTHERWISE SPECIFIED.
 8. ALL DIMENSIONS ARE TO FACE UNLESS OTHERWISE SPECIFIED.
 9. ALL DIMENSIONS ARE TO FACE UNLESS OTHERWISE SPECIFIED.
 10. ALL DIMENSIONS ARE TO FACE UNLESS OTHERWISE SPECIFIED.
 11. ALL DIMENSIONS ARE TO FACE UNLESS OTHERWISE SPECIFIED.
 12. ALL DIMENSIONS ARE TO FACE UNLESS OTHERWISE SPECIFIED.
 13. ALL DIMENSIONS ARE TO FACE UNLESS OTHERWISE SPECIFIED.
 14. ALL DIMENSIONS ARE TO FACE UNLESS OTHERWISE SPECIFIED.
 15. ALL DIMENSIONS ARE TO FACE UNLESS OTHERWISE SPECIFIED.



647

2020-2021



1. This sanction is valid for a period of three years from the date of sanction and may be renewed for a future period of two years at a time and may be provided in the West Bengal Municipal Act, 1993.
2. Sanction is granted on a basis of statements, representations, disclosures and declarations made and information supplied by the applicant. In case it is discovered at a later stage that false or misleading statements were made and that any disclosure/declaration was misleading and/or was not full and complete the sanction will be revoked without prejudice to other action that may be taken by the Municipality under Civil Law.
3. Before commencing construction the site must conform to the sanctioned site plan. The applicant must implement all proposals and representations made in the Plan in full.
4. No deviations may be made from the sanctioned plan and if made the same is liable to be summarily demolished and the cost of such demolition recovered from the applicant/owner.
5. The onus of ensuring the correctness of plan lies on the applicant/owner.

Sanctioned provisionally
 Construction certificate is to be issued by the
 Competent Authority of Title before commencing
 construction.

No rainwater pipe/spout should be so fixed as to discharge rainwater on road/footpath/outside the premises.

Drainage plan for building being constructed in an area served by sewerage network will have to be prepared separately according to National building Code and sanction for the same obtained before commencing construction of drains.

Within one month after the completion of the erection of a building or the execution of any work the owner of this building must submit a notice of completion to the Municipality in compliance with provision's contained in Rule 32 of the West Bengal Building Rules, 1972. Failure to do so will attract a fine penalty. No person may obstruct or hinder the completion of a building erected in accordance with a sanctioned plan under West Bengal Municipal Act, 1993. Occupancy Certificate issued by the Municipality.

PHASE-I

SANCTIONED Provisionally up to ground floor roof casting Final Sanction will be accorded in Phase-II after Completion of ground floor RCC Structure as per Provisionally sanctioned plan in Phase-I

K. C. 15/12/20

Chairperson

SOUTH DUM DUM MUNICIPALITY

DATE.....

15/12/20