

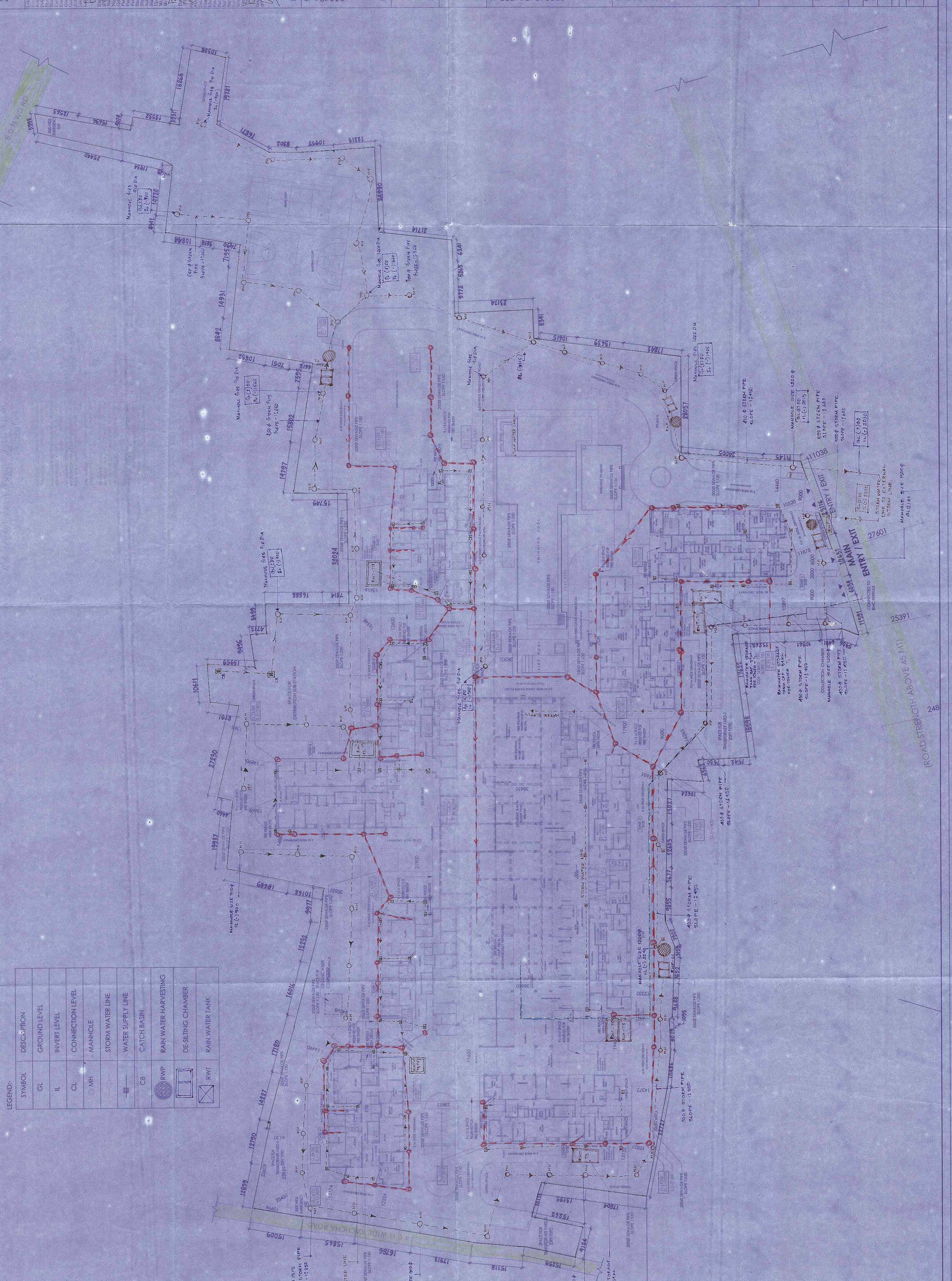
Kasta Developers LLP
 Hyderabad Branch LLP
 Bangalore Branch LLP
 Chennai Branch LLP
 Pune Branch LLP
 Kolkata Branch LLP
 Mumbai Branch LLP
 Gurugram Branch LLP
 Lucknow Branch LLP
 Jaipur Branch LLP
 Chandigarh Branch LLP
 Dehradun Branch LLP
 Coimbatore Branch LLP
 Solapur Branch LLP
 Warangal Branch LLP
 Bhopal Branch LLP
 Raipur Branch LLP
 Patna Branch LLP
 Bhubaneswar Branch LLP
 Thiruvananthapuram Branch LLP
 Mysore Branch LLP
 Mangalore Branch LLP
 Kollam Branch LLP
 Kannur Branch LLP
 Thrissur Branch LLP
 Kozhikode Branch LLP
 Malappuram Branch LLP
 Wayanad Branch LLP
 Palakkad Branch LLP
 Idukki Branch LLP
 Kottayam Branch LLP
 Alappuzha Branch LLP
 Ernakulam Branch LLP
 Thrissur Branch LLP
 Kozhikode Branch LLP
 Malappuram Branch LLP
 Wayanad Branch LLP
 Palakkad Branch LLP
 Idukki Branch LLP
 Kottayam Branch LLP
 Alappuzha Branch LLP
 Ernakulam Branch LLP

NOTES:
 1. ALL DIMENSIONS & LEVELS ARE IN METERS UNLESS MENTIONED OTHERWISE.
 2. THE DRAWING SHALL BE READ FROM LEFT TO RIGHT AND FROM TOP TO BOTTOM.
 3. THE DRAWING SHALL BE READ FROM LEFT TO RIGHT AND FROM TOP TO BOTTOM.
 4. THE DRAWING SHALL BE READ FROM LEFT TO RIGHT AND FROM TOP TO BOTTOM.
 5. THE DRAWING SHALL BE READ FROM LEFT TO RIGHT AND FROM TOP TO BOTTOM.
 6. THE DRAWING SHALL BE READ FROM LEFT TO RIGHT AND FROM TOP TO BOTTOM.
 7. THE DRAWING SHALL BE READ FROM LEFT TO RIGHT AND FROM TOP TO BOTTOM.
 8. THE DRAWING SHALL BE READ FROM LEFT TO RIGHT AND FROM TOP TO BOTTOM.
 9. THE DRAWING SHALL BE READ FROM LEFT TO RIGHT AND FROM TOP TO BOTTOM.
 10. THE DRAWING SHALL BE READ FROM LEFT TO RIGHT AND FROM TOP TO BOTTOM.

LEGEND:

SYMBOL	DESCRIPTION
GL	GROUND LEVEL
IL	INVERT LEVEL
CL	CONNECTION LEVEL
MH	MANHOLE
	STORM WATER LINE
	WATER SUPPLY LINE
CB	CATCH BASIN
RWP	RAIN WATER PIPING
	DE-SILTING CHAMBER
RWT	RAIN WATER TANK

CERTIFICATE OF ARCHITECT:
 I DO HEREBY CERTIFY WITH FULL RESPONSIBILITY THAT THE ARCHITECTURE DESIGN OF THE BUILDING SHOWN IN THIS DRAWING IS THE ORIGINAL DESIGN OF THE ARCHITECT AND THAT THE BUILDING HAS BEEN MADE BY ME OR UNDER MY SUPERVISION AND IN ACCORDANCE WITH THE NATIONAL BUILDING CODE OF INDIA AND CERTIFIED THAT IT IS SAFE AND STABLE IN ALL RESPECTS.
CERTIFICATE OF STRUCTURAL ENGINEER:
 I DO HEREBY CERTIFY WITH FULL RESPONSIBILITY THAT THE STRUCTURAL DESIGN OF THE BUILDING SHOWN IN THIS DRAWING IS THE ORIGINAL DESIGN OF THE STRUCTURAL ENGINEER AND THAT THE BUILDING HAS BEEN MADE BY ME OR UNDER MY SUPERVISION AND IN ACCORDANCE WITH THE NATIONAL BUILDING CODE OF INDIA AND CERTIFIED THAT IT IS SAFE AND STABLE IN ALL RESPECTS.
CERTIFICATE OF MECHANICAL ENGINEER:
 I DO HEREBY CERTIFY WITH FULL RESPONSIBILITY THAT THE MECHANICAL DESIGN OF THE BUILDING SHOWN IN THIS DRAWING IS THE ORIGINAL DESIGN OF THE MECHANICAL ENGINEER AND THAT THE BUILDING HAS BEEN MADE BY ME OR UNDER MY SUPERVISION AND IN ACCORDANCE WITH THE NATIONAL BUILDING CODE OF INDIA AND CERTIFIED THAT IT IS SAFE AND STABLE IN ALL RESPECTS.



PROJECT INFORMATION:
 Project: G-18 STORED TOWER 1 & TOWER 2, G-20 STORED TOWER 3, 4, 5, 6, 7, 8, 9 & 10 ALONG WITH LCP (S-18) METERS IN P.S. & DAG NOS. 44/41/7 (EARLIER 44/1, 44/2, 44/3, 44/4, 44/5, 44/6, 44/7, 44/8, 44/9, 44/10, 44/11, 44/12, 44/13, 44/14, 44/15, 44/16, 44/17, 44/18, 44/19, 44/20, 44/21, 44/22, 44/23, 44/24, 44/25, 44/26, 44/27, 44/28, 44/29, 44/30, 44/31, 44/32, 44/33, 44/34, 44/35, 44/36, 44/37, 44/38, 44/39, 44/40, 44/41, 44/42, 44/43, 44/44, 44/45, 44/46, 44/47, 44/48, 44/49, 44/50, 44/51, 44/52, 44/53, 44/54, 44/55, 44/56, 44/57, 44/58, 44/59, 44/60, 44/61, 44/62, 44/63, 44/64, 44/65, 44/66, 44/67, 44/68, 44/69, 44/70, 44/71, 44/72, 44/73, 44/74, 44/75, 44/76, 44/77, 44/78, 44/79, 44/80, 44/81, 44/82, 44/83, 44/84, 44/85, 44/86, 44/87, 44/88, 44/89, 44/90, 44/91, 44/92, 44/93, 44/94, 44/95, 44/96, 44/97, 44/98, 44/99, 44/100).
 Date: 12.09.2019
 Scale: 1:500
 Drawing No: MKD-SD-28
 Revision No: 01

TKD-SD-28

6) Manhole Drainage & so sewage
Vaid Upo. 06/05/2021.

PARTY'S COPY

ANY DEVIATION SHALL
MEAN REJECTION

APPROVED
Bilimangur Municipal Corporation
Pannam Bhanu, Kolar-70008
(REVISED PLAN)
By: **SHRI. A. T. A. G. (SA/SD) S.M., R.**
Name: **SHRI. A. T. A. G. (SA/SD) S.M., R.**
Previous Station No: **80C/1602A (TA-9 (SA/SD) S.M.)**
Date: **07/05/2021**

SHRI. A. T. A. G. (SA/SD) S.M., R.
Executive Engineer
Bilimangur Municipal Corporation

- Appendix B, clause 1)
Completion shall have to be observed,
2) No wastage of water shall be made, check
for any leakage in the underground
3) The structure shall be constructed in accordance
with the approved plan and the
house sewer directly or through any yard
4) The existing lateral sewer system and
sanitation lines have got to be separately
5) Before starting any construction it should be
with that of plans sanctioned and all the
6) The structure shall not be encroached
by any other structure or any other
7) Appendix B shall have to be submitted.

CHECKER
SHRI. A. T. A. G. (SA/SD) S.M., R.
Executive Engineer
Bilimangur Municipal Corporation

SHRI. A. T. A. G. (SA/SD) S.M., R.
Executive Engineer
Bilimangur Municipal Corporation