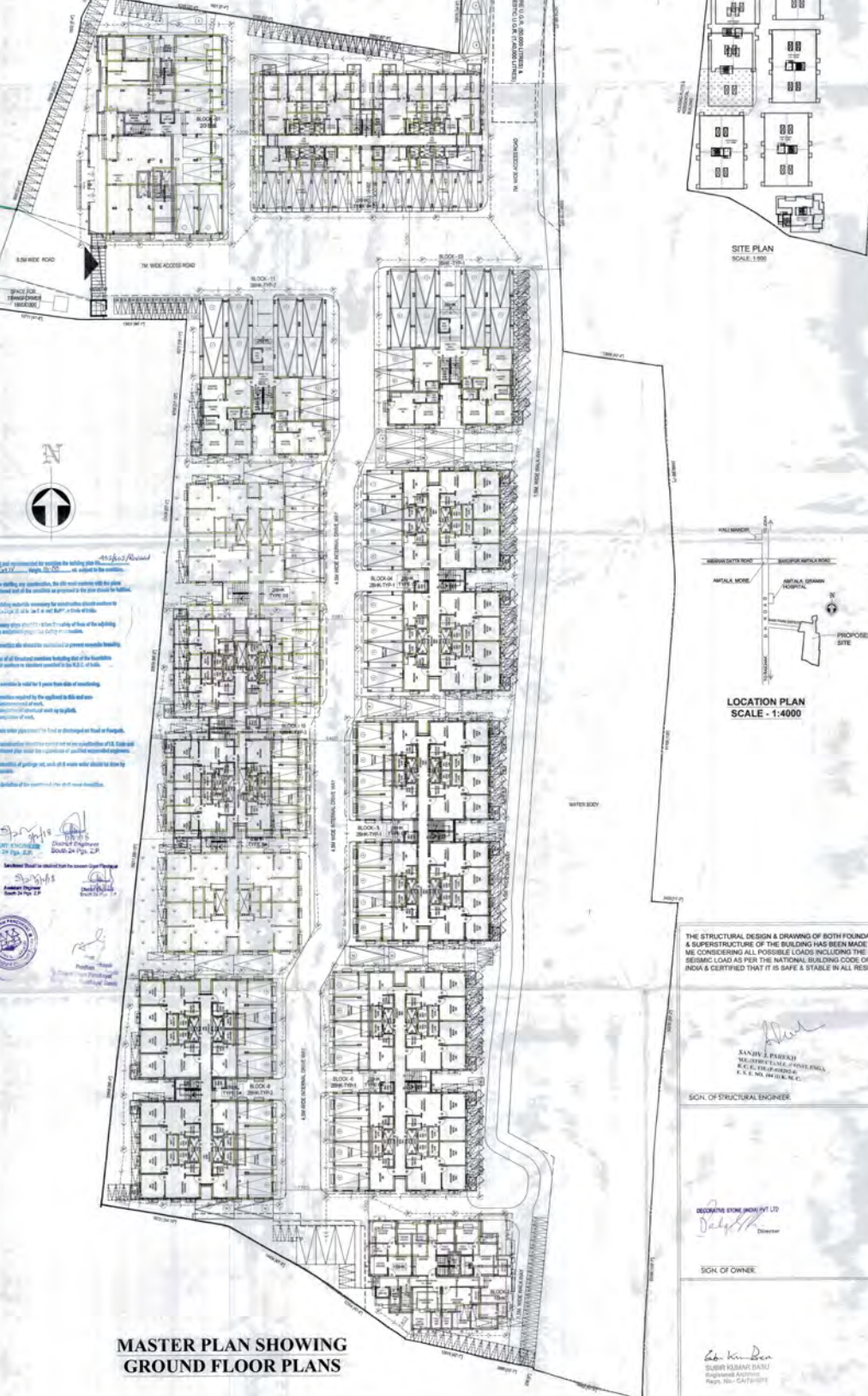


- GENERAL NOTES:**
1. ALL DIMENSIONS ARE IN MILLIMETRES UNLESS OTHERWISE STATED.
 2. ALL EXTERNAL WALLS ARE 200 P.H. ALL INTERNAL WALLS ARE 150 P.H. & 100 P.H.
 3. THE DEPTH OF S.U.G.W.R. & STP SHALL NEVER EXCEED THE DEPTH OF FOUNDATION.
 4. BRICK WORK 200 P.H. MORTAR 1:6 & BRICK WORK 150 P.H. 100 P.H. MORTAR 1:4
 5. ALL R.C.C. WORKS ARE EXCEPT FOUNDATION ARE.
 6. GRADE OF STEEL FE 415 I.S. CODE 1784-1979.
 7. ALL SHORTS OF PRECAUTIONARY MEASURE WILL BE TAKEN AT THE TIME OF CONSTRUCTION.
 8. OTHERS PER ARE AS PER I.S. SPECIFICATION.



PROPOSED AREA STATEMENT :

AREA DETAILS	NO. OF BLOCKS	FLOOR	FLOOR AREA	TOTAL FLOOR AREA
10K	1	GROUND FLOOR	284.79 SQM	284.79 SQM
		TYPICAL FLOOR	284.79 SQM	
		TOTAL FLOOR AREA	569.58 SQM	
20K	1	GROUND FLOOR	381.32 SQM	381.32 SQM
		TYPICAL FLOOR	381.32 SQM	
		TOTAL FLOOR AREA	762.64 SQM	
20K (TYPE 1)	1	GROUND FLOOR	475.51 SQM	475.51 SQM
		TYPICAL FLOOR	475.51 SQM	
		TOTAL FLOOR AREA	951.02 SQM	
20K (TYPE 2)	1	GROUND FLOOR	475.51 SQM	475.51 SQM
		TYPICAL FLOOR	475.51 SQM	
		TOTAL FLOOR AREA	951.02 SQM	
20K (TYPE 3)	1	GROUND FLOOR	475.51 SQM	475.51 SQM
		TYPICAL FLOOR	475.51 SQM	
		TOTAL FLOOR AREA	951.02 SQM	
20K (TYPE 4)	1	GROUND FLOOR	381.32 SQM	381.32 SQM
		TYPICAL FLOOR	381.32 SQM	
		TOTAL FLOOR AREA	762.64 SQM	
20K (TYPE 5)	1	GROUND FLOOR	381.32 SQM	381.32 SQM
		TYPICAL FLOOR	381.32 SQM	
		TOTAL FLOOR AREA	762.64 SQM	
20K (TYPE 6)	1	GROUND FLOOR	381.32 SQM	381.32 SQM
		TYPICAL FLOOR	381.32 SQM	
		TOTAL FLOOR AREA	762.64 SQM	
20K (TYPE 7)	1	GROUND FLOOR	381.32 SQM	381.32 SQM
		TYPICAL FLOOR	381.32 SQM	
		TOTAL FLOOR AREA	762.64 SQM	
20K (TYPE 8)	1	GROUND FLOOR	381.32 SQM	381.32 SQM
		TYPICAL FLOOR	381.32 SQM	
		TOTAL FLOOR AREA	762.64 SQM	
20K (TYPE 9)	1	GROUND FLOOR	381.32 SQM	381.32 SQM
		TYPICAL FLOOR	381.32 SQM	
		TOTAL FLOOR AREA	762.64 SQM	
20K (TYPE 10)	1	GROUND FLOOR	381.32 SQM	381.32 SQM
		TYPICAL FLOOR	381.32 SQM	
		TOTAL FLOOR AREA	762.64 SQM	
TOTAL	10		4133.09 SQM	

PROPOSED GROUND COVERAGE:

BLOCK	NO. OF BLOCKS	GROUND COVERAGE (SQM)	LAND AREA	ROAD WIDTH
10K	1	284.79 SQM	11304.83 SQM	6.5 M
20K	1	381.32 SQM	63.5 M	
20K (TYPE 1)	1	475.51 SQM	405	
20K (TYPE 2)	1	475.51 SQM	433.09 SQM (3M, 5M)	
20K (TYPE 3)	1	475.51 SQM	433.09 SQM (3M, 5M)	
20K (TYPE 4)	1	381.32 SQM	1750.79 SQM	
20K (TYPE 5)	1	381.32 SQM	1750.79 SQM	
20K (TYPE 6)	1	381.32 SQM	1750.79 SQM	
20K (TYPE 7)	1	381.32 SQM	1750.79 SQM	
20K (TYPE 8)	1	381.32 SQM	1750.79 SQM	
20K (TYPE 9)	1	381.32 SQM	1750.79 SQM	
20K (TYPE 10)	1	381.32 SQM	1750.79 SQM	
TOTAL	10	4133.09 SQM		

AREA STATEMENT:

LAND AREA	ROAD WIDTH	PERMISSIBLE GROUND COVERAGE	PROPOSED GROUND COVERAGE	TOTAL FLOOR AREA
11304.83 SQM	6.5 M	405	4133.09 SQM (3M, 5M)	1750.79 SQM

TOTAL NO. OF CAR/TWO WHEELER PARKING PROVIDED : 175
 NO. OF COVERED CAR PARKING : 74
 NO. OF OPEN CAR PARKING : 13
 NO. OF OPEN TWO WHEELER PARKING : 88

SANCTIONED AREA STATEMENT :

AREA DETAILS	NO. OF BLOCKS	FLOOR	FLOOR AREA	TOTAL FLOOR AREA
10K	1	GROUND FLOOR	274.58 SQM	274.58 SQM
		FIRST FLOOR	187.21 SQM	
		TOTAL FLOOR AREA	461.79 SQM	
20K	1	GROUND FLOOR	187.21 SQM	187.21 SQM
		TYPICAL FLOOR	187.21 SQM	
		TOTAL FLOOR AREA	374.42 SQM	
20K (TYPE 1)	1	GROUND FLOOR	438.81 SQM	438.81 SQM
		FIRST FLOOR	438.81 SQM	
		TOTAL FLOOR AREA	877.62 SQM	
20K (TYPE 2)	1	GROUND FLOOR	438.81 SQM	438.81 SQM
		FIRST FLOOR	438.81 SQM	
		TOTAL FLOOR AREA	877.62 SQM	
20K (TYPE 3)	1	GROUND FLOOR	438.81 SQM	438.81 SQM
		FIRST FLOOR	438.81 SQM	
		TOTAL FLOOR AREA	877.62 SQM	
20K (TYPE 4)	1	GROUND FLOOR	438.81 SQM	438.81 SQM
		FIRST FLOOR	438.81 SQM	
		TOTAL FLOOR AREA	877.62 SQM	
20K (TYPE 5)	1	GROUND FLOOR	438.81 SQM	438.81 SQM
		FIRST FLOOR	438.81 SQM	
		TOTAL FLOOR AREA	877.62 SQM	
20K (TYPE 6)	1	GROUND FLOOR	438.81 SQM	438.81 SQM
		FIRST FLOOR	438.81 SQM	
		TOTAL FLOOR AREA	877.62 SQM	
20K (TYPE 7)	1	GROUND FLOOR	438.81 SQM	438.81 SQM
		FIRST FLOOR	438.81 SQM	
		TOTAL FLOOR AREA	877.62 SQM	
20K (TYPE 8)	1	GROUND FLOOR	438.81 SQM	438.81 SQM
		FIRST FLOOR	438.81 SQM	
		TOTAL FLOOR AREA	877.62 SQM	
20K (TYPE 9)	1	GROUND FLOOR	438.81 SQM	438.81 SQM
		FIRST FLOOR	438.81 SQM	
		TOTAL FLOOR AREA	877.62 SQM	
20K (TYPE 10)	1	GROUND FLOOR	438.81 SQM	438.81 SQM
		FIRST FLOOR	438.81 SQM	
		TOTAL FLOOR AREA	877.62 SQM	
20K	2	GROUND FLOOR	261.32 SQM	522.64 SQM
		FIRST FLOOR	261.32 SQM	
		TOTAL FLOOR AREA	1045.28 SQM	
TOTAL	11		11304.83 SQM	

PROPOSED GROUND COVERAGE:

BLOCK	NO. OF BLOCKS	GROUND COVERAGE (SQM)	LAND AREA	ROAD WIDTH
10K	1	274.58 SQM	11304.83 SQM	6.5 M
20K	1	381.32 SQM	63.5 M	
20K (TYPE 1)	1	475.51 SQM	405	
20K (TYPE 2)	1	475.51 SQM	433.09 SQM (3M, 5M)	
20K (TYPE 3)	1	475.51 SQM	433.09 SQM (3M, 5M)	
20K (TYPE 4)	1	381.32 SQM	1750.79 SQM	
20K (TYPE 5)	1	381.32 SQM	1750.79 SQM	
20K (TYPE 6)	1	381.32 SQM	1750.79 SQM	
20K (TYPE 7)	1	381.32 SQM	1750.79 SQM	
20K (TYPE 8)	1	381.32 SQM	1750.79 SQM	
20K (TYPE 9)	1	381.32 SQM	1750.79 SQM	
20K (TYPE 10)	1	381.32 SQM	1750.79 SQM	
20K	2	522.64 SQM	1045.28 SQM	
TOTAL	11	4984.83 SQM		

AREA STATEMENT:

LAND AREA	ROAD WIDTH	PERMISSIBLE GROUND COVERAGE	PROPOSED GROUND COVERAGE	TOTAL FLOOR AREA
11304.83 SQM	6.5 M	405	4984.83 SQM (3M, 5M)	1045.28 SQM

TOTAL NO. OF CAR/TWO WHEELER PARKING PROVIDED : 317
 NO. OF COVERED CAR PARK : 41
 NO. OF OPEN CAR/TWO WHEELER PARK : 276
 NO. OF OPEN TWO WHEELER PARK : 233

PROJECT TITLE:-
 PROPOSED G+4 STORIED HOUSING COMPLEX AT MOUZA - AMTALA, P.S. BISHNUPUR, J.L. NO. - 73, RS DAG NO. 978, 979, 981, 982 & 985 & LR DAG NO. 1831, 1832, 1837, 1839 & 1836, KHATIAN NO.923, BLOCK - BISHNUPUR-2, GRAM PANCHAYET - CHANDI, DISTRICT - SOUTH 24 PARGANAS.

SHEET TITLE:-
 MASTER PLAN SHOWING GROUND FLOOR, SITE PLAN & LOCATION PLAN

ARCHITECT
Subir Kumar Basu
 CONSULTING ARCHITECTS & ENGINEERS
 4, BROAD STREET
 KOLKATA-700019

DRAWN BY: MADHARITA	DEALT BY: INDRANI	CHECKED BY: RAJA BASU
SCALE - 1:200	SHEET NO. - 1 OF 8	DATE: 10.11.2017
DRAWING NO. - SKB/MIT/AR/SANCMASTER PLAN/1		

- To be used as a reference for the building.
- All dimensions are in millimeters unless otherwise stated.
- All external walls are 200 P.H. All internal walls are 150 P.H. & 100 P.H.
- The depth of S.U.G.W.R. & STP shall never exceed the depth of foundation.
- Brick work 200 P.H. mortar 1:6 & brick work 150 P.H. 100 P.H. mortar 1:4.
- All R.C.C. works are except foundation are.
- Grade of steel Fe 415 I.S. Code 1784-1979.
- All shorts of precautionary measure will be taken at the time of construction.
- Others per are as per I.S. specification.

THE STRUCTURAL DESIGN & DRAWING OF BOTH FOUNDATION & SUPERSTRUCTURE OF THE BUILDING HAS BEEN MADE BY ME CONSIDERING ALL POSSIBLE LOADS INCLUDING THE SEISMIC LOAD AS PER THE NATIONAL BUILDING CODE OF INDIA & CERTIFIED THAT IT IS SAFE & STABLE IN ALL RESPECT

SIGNATURE
 SANKU J. PARIKH
 MEMBER IN CHARGE, AMERICAN INSTITUTE OF ARCHITECTS & CIVIL ENGINEERS
 R.C.C. NO. 18 IN KOLKATA

SIGN. OF STRUCTURAL ENGINEER

SIGNATURE
 SUBIR KUMAR BASU
 RAJA, AM. COLLEGE

SIGN. OF ARCHITECT

SIGNATURE
 RAJA BASU
 RAJA, AM. COLLEGE

SIGN. OF OWNER