



CHARLES COMMERCIAL PVT. LTD.

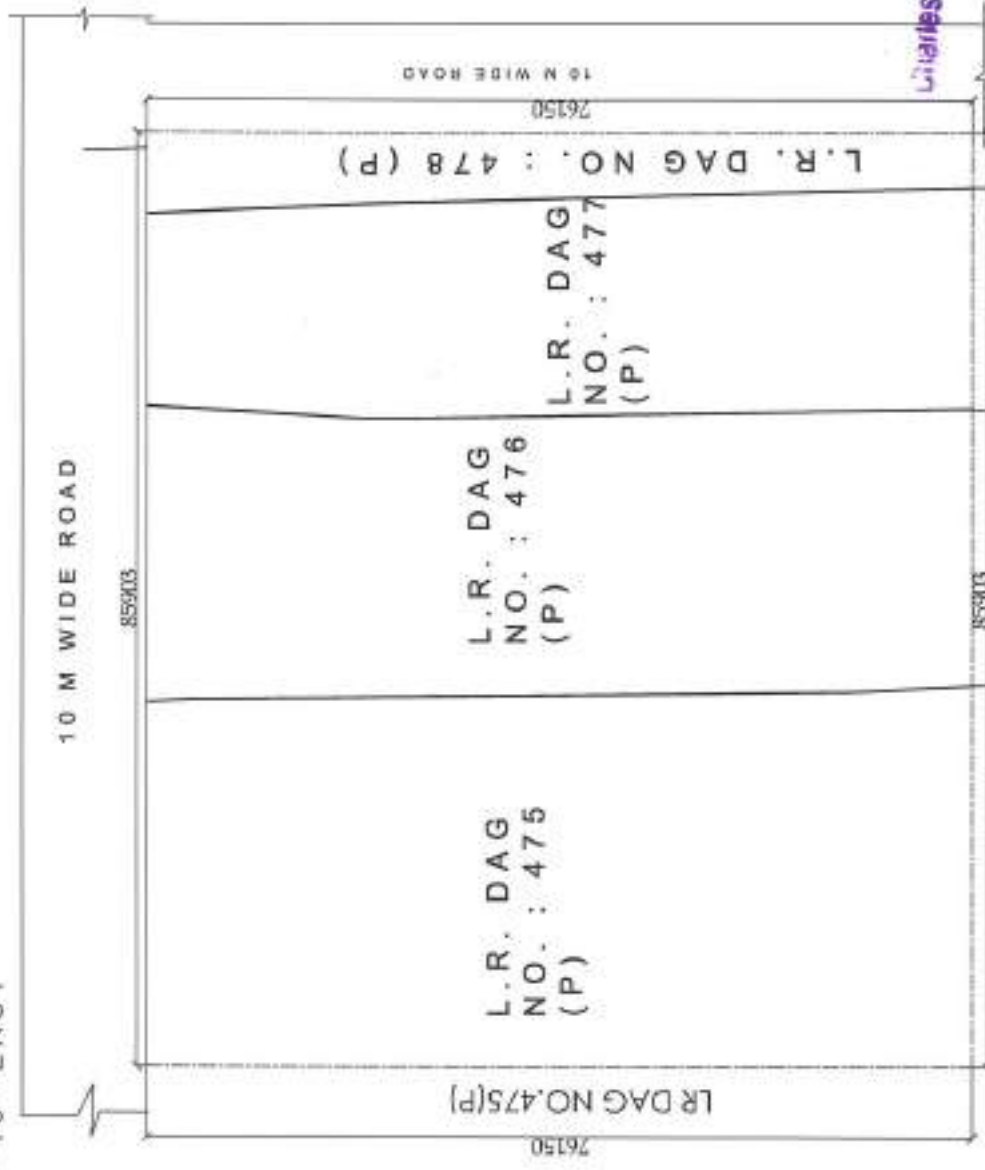
PAN : AABCC2791A
GSTIN : 19AABCC2791A1ZY
CIN No. : U70100WB1996PTC081136

PROPOSED SITE AT MOUZA - NOWABAD, J.L. NO -19, L.R KHATIAN NO.1255,1401,1405,1448,1454 L.R. DAG NO-475(P) 476(P) 477(P) 478(P)
UNDER P.S. BISHNUPUR, P.O. RASAPUNJA, DIST- SOUTH 24 PARGANAS, UNDER RASAPUNJA GRAM PANCHAYAT.

LAND AREA = 4 BIGHA 17KATHA 12 CHATAK 33 SQ.FT. = 6541.51 SQ.M. = 70413 SQ.FT

LATITUDE : 22°25' NORTH

LONGITUDE : 88°16' EAST



Charles Commercial Pvt. Ltd.
Purnima Bhunia
Authorized Signatory
Director

LR DAG NO.475(P)

LR DAG NO.476(P)

LR DAG NO.477(P)

LR DAG NO.478(P)

ALL DIMENSIONS ARE IN MM