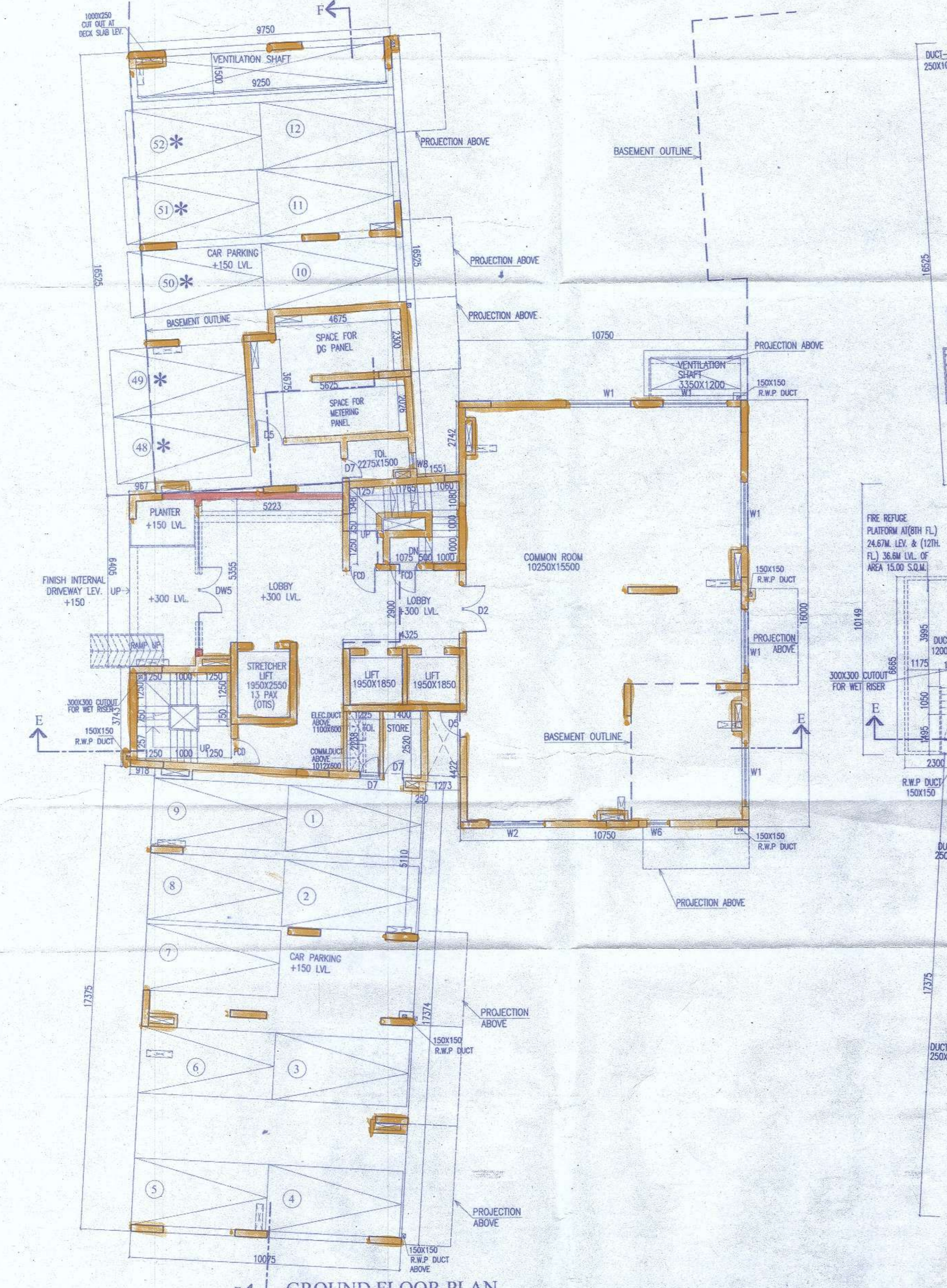




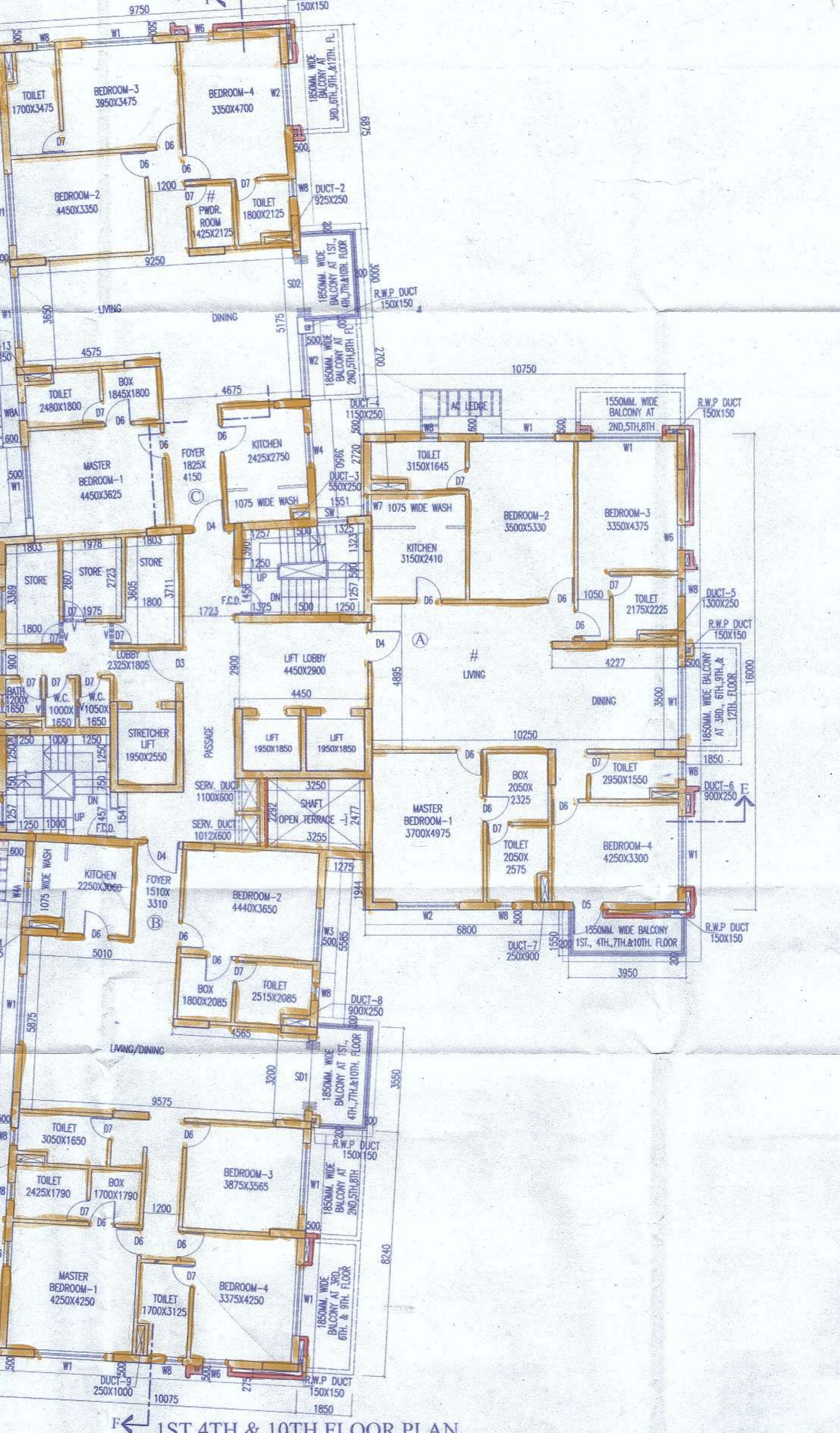
2ND, 5TH, 8TH FLOOR PLAN



3RD, 6TH & 9TH FLOOR PLAN



GROUND FLOOR PLAN



1ST, 4TH & 10TH FLOOR PLAN

NO	SILL	LINTEL	SIZE
DW1	2450	2450	9450X3450
DW2	2450	2450	4920X2450
DW3	2450	2450	5350X2450
DW4	2450	2450	4995X2450
DW5	2450	2450	3850X2450
DW6	2450	2450	3150X2450
DW7	2450	2450	3200X2450
DW8	2450	2450	3000X2450
DW9	2450	2450	2640X2450
D2	2150	2150	1800X2150
D2A	2450	2450	1800X2450
D3	2150	2150	1200X2150
D4	2150	2150	1100X2150
D5	2150	2150	1000X2150
D5A	2150	2150	1075X2150
D6	2150	2150	900X2150
D6A	250	2300	900X2050
D7	2150	2150	750X2150
SD1	2150	2150	2400X2150
SD2	2150	2150	2100X2150
SD3	2150	2150	1800X2150
F.C.D	2150	2150	1000X2150
SW	350	2150	1200X1800
SW1	350	2150	1000X1800
SW2	350	2150	850X1800
SW3	350	2150	1200X1400
SW4	350	2150	1125X1200
SW5	350	2150	2400X1800
W1	350	2150	2400X1800
W1a	350	2150	2250X1800
W2	350	2150	2100X1800
W3	350	2150	1800X1800
W4	1100	2150	1200X1050
W4A	350	2150	1200X1800
W4B	350	2150	1200X1800
W5	350	2150	1050X1800
W5A	1100	2150	1050X1050
W5B	350	2150	1050X1800
W6	350	2150	850X1800
W6A	950	2150	850X1200
W6B	950	2150	850X1200
W6C	350	2150	600X1800
W6D	1200	2150	850X950
W7	350	2150	700X1800
W7A	350	2150	725X1800
W8	1250	2150	600X900
W8A	350	2150	700X1800
W8B	1250	2150	575X900
F.G.	350	2450	(1700-2150)X2100

For 1. Clarify Barter Pvt. Ltd. 2. Himadri Teap Pvt. Ltd. 3. Kallidri Agency Pvt. Ltd. 4. Anurag Estates Pvt. Ltd. 5. Anurag Hira Pvt. Ltd. 6. Gurukul Consultant Pvt. Ltd. 7. Kambhampati Pvt. Ltd. 8. Sathya Anand Services Pvt. Ltd. 9. Urvashi Commercial Pvt. Ltd. 10. Urvashi Enterprises Pvt. Ltd. 11. Khazana Teap Pvt. Ltd. 12. Sree Vinayak Villa Pvt. Ltd. 13. Urvashi Hira Pvt. Ltd. 14. Kyal Promoters Pvt. Ltd. 15. Kyal Hira Pvt. Ltd. 16. Kyal Real Estate Pvt. Ltd. 17. Kyal Residency Pvt. Ltd. 18. Kyal Complex Pvt. Ltd. 19. Kyal Residency Pvt. Ltd. 20. Lakshya Distributors Pvt. Ltd. By their Constituted Attorney

For 21. Showini Distributors Pvt. Ltd. 22. Parvathi Teap Pvt. Ltd. 23. Shreevast Teap Pvt. Ltd. 24. Liberal Barter Pvt. Ltd. 25. Shree Barter Pvt. Ltd. 26. Lily Advisory Services Pvt. Ltd. 27. Shree Anand Pvt. Ltd. 28. Kyal Housing Pvt. Ltd. 29. Rishi Complex Pvt. Ltd. 30. Rishi Enclave Pvt. Ltd. 31. Anurag Barter Pvt. Ltd. 32. Adarsh Goods Pvt. Ltd. 33. Anurag Goods Pvt. Ltd. 34. Anmol Barter Pvt. Ltd. 35. Anubhav Sales Pvt. Ltd. 36. Anurag Barter Pvt. Ltd. 37. Compare Vinaya Pvt. Ltd. 38. Gurukul Vyaapar Pvt. Ltd. 39. Matrix Vyaapar Pvt. Ltd. 40. Megamart Ventures Pvt. Ltd. By their Constituted Attorney

For 41. Mumpoo Merchants Pvt. Ltd. 42. Nayaa Commercial Pvt. Ltd. 43. Piyush Vinayak Pvt. Ltd. 44. Prakash Vyaapar Pvt. Ltd. 45. Prakash Distributors Pvt. Ltd. 46. Prakash Vyaapar Pvt. Ltd. 47. Prince Vinayak Pvt. Ltd. 48. Pratik Merchants Pvt. Ltd. 49. Rocket Vinayak Pvt. Ltd. 50. Samay Barter Pvt. Ltd. 51. Samay Vinayak Pvt. Ltd. 52. Anandam Goods Pvt. Ltd. 53. Senthive Vyaapar Pvt. Ltd. 54. Shilpa Teap Pvt. Ltd. 55. Senthive Vinayak Pvt. Ltd. 56. Upward Merchants Pvt. Ltd. 57. Vertical Vinayak Pvt. Ltd. 58. Creck Vinayak Pvt. Ltd. 59. Innovative Vinayak Pvt. Ltd. By their Constituted Attorney

CERTIFICATE OF STRUCTURAL ENGINEER.

THIS IS TO CERTIFY THAT THE STRUCTURAL DESIGN AND DRAWINGS OF BOTH FOUNDATION AND SUPER STRUCTURE OF THE BUILDING HAS BEEN MADE BY ME CONSIDERING ALL POSSIBLE LOADS INCLUDING THE SEISMIC LOAD AS PER THE NATIONAL BUILDING CODE OF INDIA AND CERTIFIED THAT IT IS SAFE AND STABLE IN ALL RESPECTS. SOIL TEST REPORT IS PREPARED BY M/S BOSE ENGINEERS - 74/71, SULTAN ALAM ROAD, KOLKATA-700033

SANJIV J. PAREKH
M.E. (STRUCT.), B.C.E., PCCOM,
C. ENG-1, MISE, ASCE, FIE (P-016262-4)
E.S.E. No. 104 (I) K.M.C.

SIGNATURE OF STRUCTURAL ENGG.

CERTIFICATE OF ARCHITECT.

I DO HEREBY CERTIFY WITH FULL RESPONSIBILITY THAT THE BUILDING PLAN HAS BEEN DRAWN UP AS PER K.M.C. BUILDING RULE-2009 AS AMENDED FROM TIME TO TIME THAT THE WIDTH OF THE ABUTTING ROAD CONFORM WITH THE PLAN AND IT IS A BUILDABLE SITE NOT A TANK OR A FILLED UP TANK. THE SITE PLAN KEY PLAN AGREES WITH THE SITE. THE PLOT IS DEMARCATED BY BOUNDARY WALLS & MEASUREMENTS TALLY WITH THE REGD. DEED PLAN. THE EXISTING STRUCTURE AS SHOWN FULLY OCCUPIED BY OWNERS AS PER OWNERS UNDERTAKING.

JAY PRAKASH BHARAT KUMAR AGRAWAL
B. Arch., A.I.A.,
Reg. No. CA/88/10098
ARCHITECT. SL. NO. - 32(A)

SIGNATURE OF ARCHITECT.

TITLE:	GROUND FLOOR PLAN 1ST, 4TH, 10TH FLOOR PLAN 2ND, 5TH, 8TH FLOOR PLAN 3RD, 6TH, 9TH FLOOR PLAN BLOCK - 3
PROJECT:	PLAN SHOWING CHANGES (U/R 26(2a) & 26) OF KMC BUILDING RULE-2009 OF RESIDENTIAL COMPLEX WITH BLOCK-1 (G-XI), BLOCK-2 TO 4 (B-G-XII) AND BLOCK-3 (B-G-XIII) AT PREMISES NO. 49A, MONOMHAN BANERJEE ROAD, KOLKATA-700033, WARD NO. - 118, BOROUGH - XIII, P.S. - BEHALA, SANCTIONED VIDE B.P. NO. 2017130182 DATED 16/12/2017, SUPERSEDED B.P. NO. 2015130048 DATED 18/05/2015
ARCHITECTS:	AGRAWAL & AGRAWAL BARODA KOLKATA
SCALE:	1:100
DATE:	05.07.18
DEALT:	RAJAT
CHECKED:	SHILA

PARTY'S COPY

008/02/26(2a) & (2b) / 18-19 & 20/8/18.

This Plan is to be Treated As Part
And Parcel And Contiguous To
B. S. Plan No. 0019/180/18.2.
Dated 25/11/18.....
Ex. Engineer (C-8)
Br. No. 2/18

Approved on per approval of R-6(2) dt 24/08/18.

KOLKATA MUNICIPAL CORPORATION
BUILDING DEPTT.
PLANS APPROVED U/R 26 (2a) & (2b) of
C.M.C. BUILDING RULES 2009
B.P. No. 182 Br. No. 2/18-19
Assistant Engineer Ex. Engr. (Civil)
Br. No. 2/18 Br. No. 5/18

