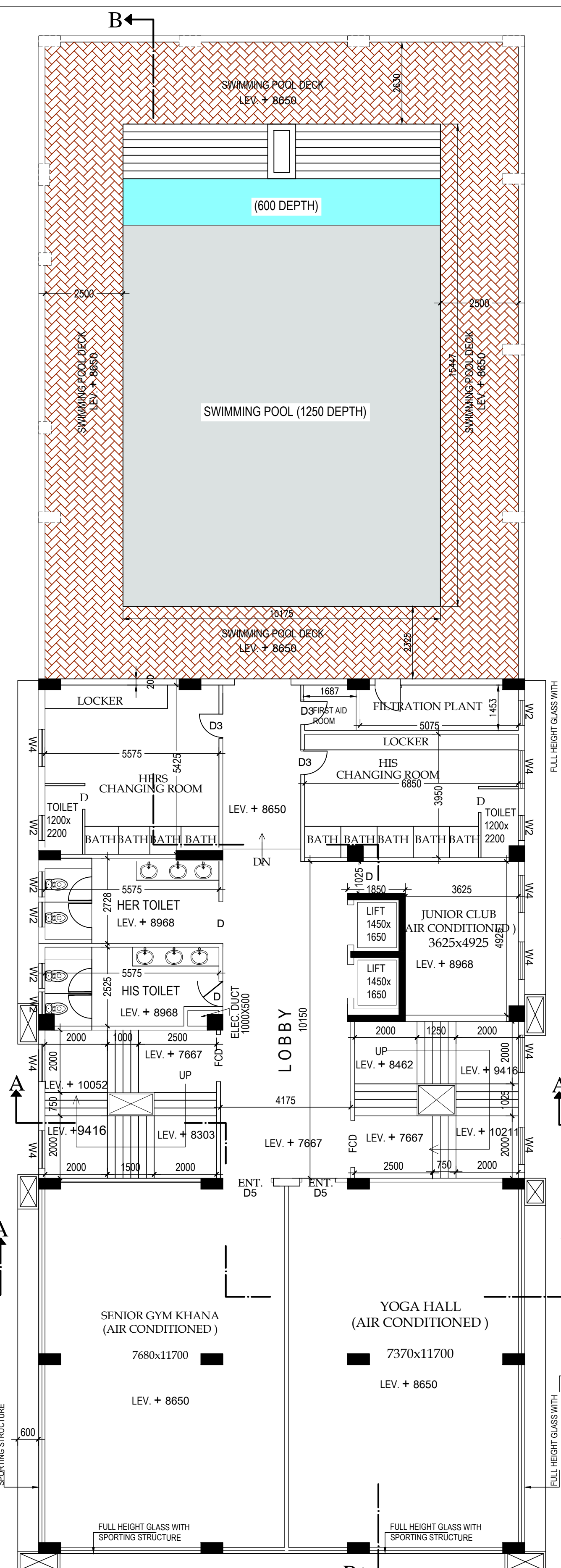
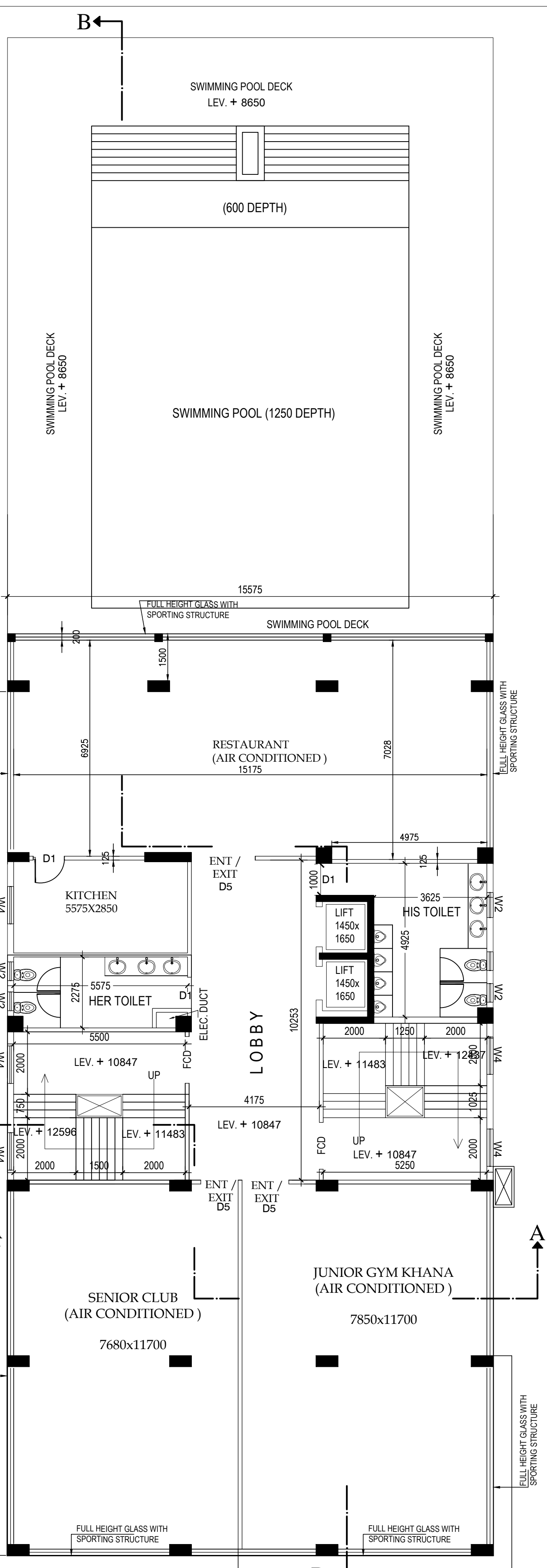


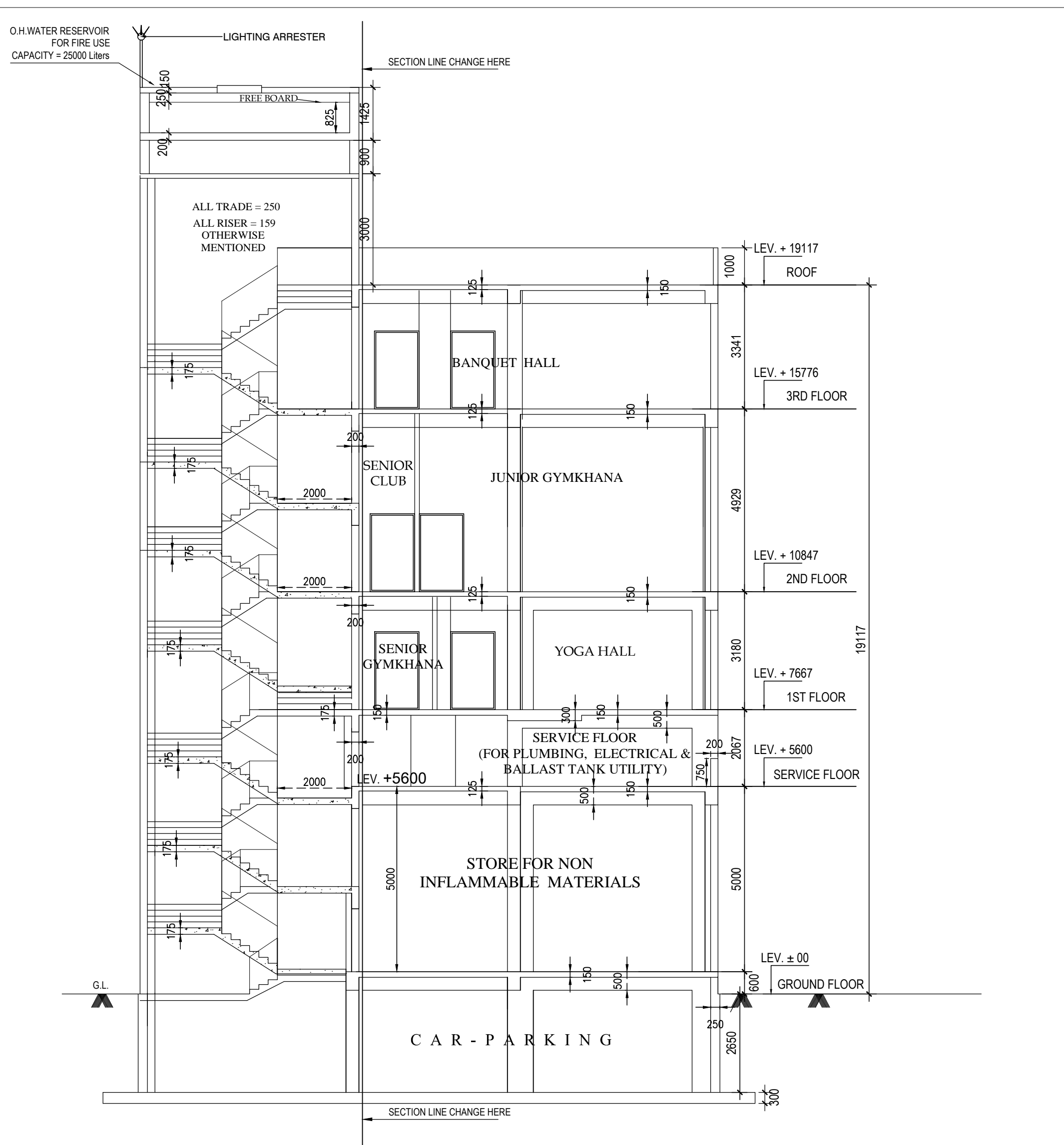
SERVICE FLOOR
BLOCK-B



FIRST FLOOR
BLOCK-B



SECOND FLOOR
BLOCK-B



SECTION ON A-A
BLOCK - B

F.A.R. STATEMENT

TOTAL LAND AREA = 4030.101 sqm
GROUND COVERAGE
 BLOCK A = 660.859 SQMT
 BLOCK B = 763.011 SQMT
 BLOCK C = 49.318 SQMT
 PROPOSED TOTAL GROUND COVERAGE = 1473.188 SQMT ie 36.554%
 PERMISSIBLE GROUND COVERAGE = 2015.051 SQMT ie 50%
TOTAL GROUND FLOOR AREA (BLOCK A) + (BLOCK B) + (BLOCK C)
 485.491 SQMT + 668.472 SQMT + 49.318 SQMT = 1203.281 SQMT

FLOOR AREA
BLOCK-A

Floor	Total floor area	Total Exempted Area			TOTAL	Net Floor Area
		Stair+Stair lobby	Lift lobby	service floor		
Basement area	924.309 SqMts.	17.855 SQMT			17.855 SQMT	906.454 SqMts.
Ground floor area	485.491 SqMts.	31.5 SQMT	9.0 SQMT		40.5 SqMts.	444.991 SqMts.
1st. floor area	556.698 SqMts.	31.5 SQMT	9.0 SQMT		40.5 SqMts.	516.198 SqMts.
2nd. floor area	556.698 SqMts.	31.5 SQMT	9.0 SQMT		40.5 SqMts.	516.198 SqMts.
3rd. floor area	556.698 SqMts.	31.5 SQMT	9.0 SQMT		40.5 SqMts.	516.198 SqMts.
4th. floor area	556.698 SqMts.	31.5 SQMT	9.0 SQMT		40.5 SqMts.	516.198 SqMts.
5th. floor area	556.698 SqMts.	31.5 SQMT	9.0 SQMT		40.5 SqMts.	516.198 SqMts.
6th. floor area	556.698 SqMts.	31.5 SQMT	9.0 SQMT		40.5 SqMts.	516.198 SqMts.
7th. floor area	556.698 SqMts.	31.5 SQMT	9.0 SQMT		40.5 SqMts.	516.198 SqMts.
8th. floor area	556.698 SqMts.	31.5 SQMT	9.0 SQMT		40.5 SqMts.	516.198 SqMts.
9th. floor area	556.698 SqMts.	31.5 SQMT	9.0 SQMT		40.5 SqMts.	516.198 SqMts.
Service floor area	556.698 SqMts.			556.698 SqMts.	556.698 SqMts.	516.198 SqMts.
10th. floor area	556.698 SqMts.	31.5 SQMT	9.0 SQMT		40.5 SqMts.	516.198 SqMts.
11th. floor area	556.698 SqMts.	31.5 SQMT	9.0 SQMT		40.5 SqMts.	516.198 SqMts.
12th. floor area	556.698 SqMts.	31.5 SQMT	9.0 SQMT		40.5 SqMts.	516.198 SqMts.
13th. floor area	556.698 SqMts.	31.5 SQMT	9.0 SQMT		40.5 SqMts.	516.198 SqMts.
14th. floor area	556.698 SqMts.	31.5 SQMT	9.0 SQMT		40.5 SqMts.	516.198 SqMts.
15th. floor area	516.551 SqMts.	31.5 SQMT	9.0 SQMT		40.5 SqMts.	476.051 SqMts.
16th. floor area	452.392 SqMts.	31.5 SQMT	9.0 SQMT		40.5 SqMts.	411.892 SqMts.
17th. floor area	375.218 SqMts.	31.5 SQMT	9.0 SQMT		40.5 SqMts.	334.718 SqMts.
18th. floor area	149.882 SqMts.	31.5 SQMT	9.0 SQMT		40.5 SqMts.	109.382 SqMts.
Total floor area	11254.313 SqMts.	616.355 SQMT	171.0 SqMts.	556.698 SqMts.	1344.053 SqMts.	9910.260 SqMts.

BLOCK-B

Floor	Total floor area	Total Exempted Area			TOTAL	Net Floor Area
		Stair+Stair lobby	Lift lobby	service floor		
Basement area	763.842 SqMts.	7.967 SQMT			7.967 SqMts.	755.875 SQMT
Ground floor area	668.472 SqMts.	50.533 SQMT	6.0 SqMts.		56.533 SqMts.	611.939 SqMts.
Service floor area	600.239 SqMts.			600.239 SqMts.	600.239 SqMts.	600.239 SqMts.
1st. floor area	429.279 SqMts.	50.533 SQMT	6.0 SqMts.		56.533 SqMts.	372.746 SqMts.
2nd. floor area	452.641 SqMts.	50.533 SQMT	6.0 SqMts.		56.533 SqMts.	396.108 SqMts.
3rd. floor area	345.174 SqMts.	50.533 SQMT	6.0 SqMts.		56.533 SqMts.	288.641 SqMts.
Total floor area	3259.647 SqMts.	210.100 SQMT	24.0 SqMts.	600.239 SqMts.	834.339 SqMts.	2425.308 SqMts.

BLOCK-C

Floor	Total floor area	Total Exempted Area		Net Floor Area
		Stair+Stair lobby	Net Floor Area	
Ground floor area	49.318 SqMts.	15.0 SQMT	34.318 SqMts.	
1st. floor area	47.243 SqMts.	15.0 SQMT	32.243 SqMts.	
Total floor area	96.561 SqMts.	30.0 SQMT	66.561 SqMts.	

TOTAL FLOOR AREA INCLUDING EXEMPTED AREA (BLOCK A)+(BLOCK B)+(BLOCK C)
 = 11254.313 SQMT + 3259.647 SQMT + 96.561 SQMT = 14610.521 SQMT
 PROPOSED TOTAL EXEMPTED AREA (BLOCK A) + (BLOCK B) + (BLOCK C)
 = 1344.053 SQMT + 834.336 SQMT + 30.0 SQMT = 2208.389 SQMT

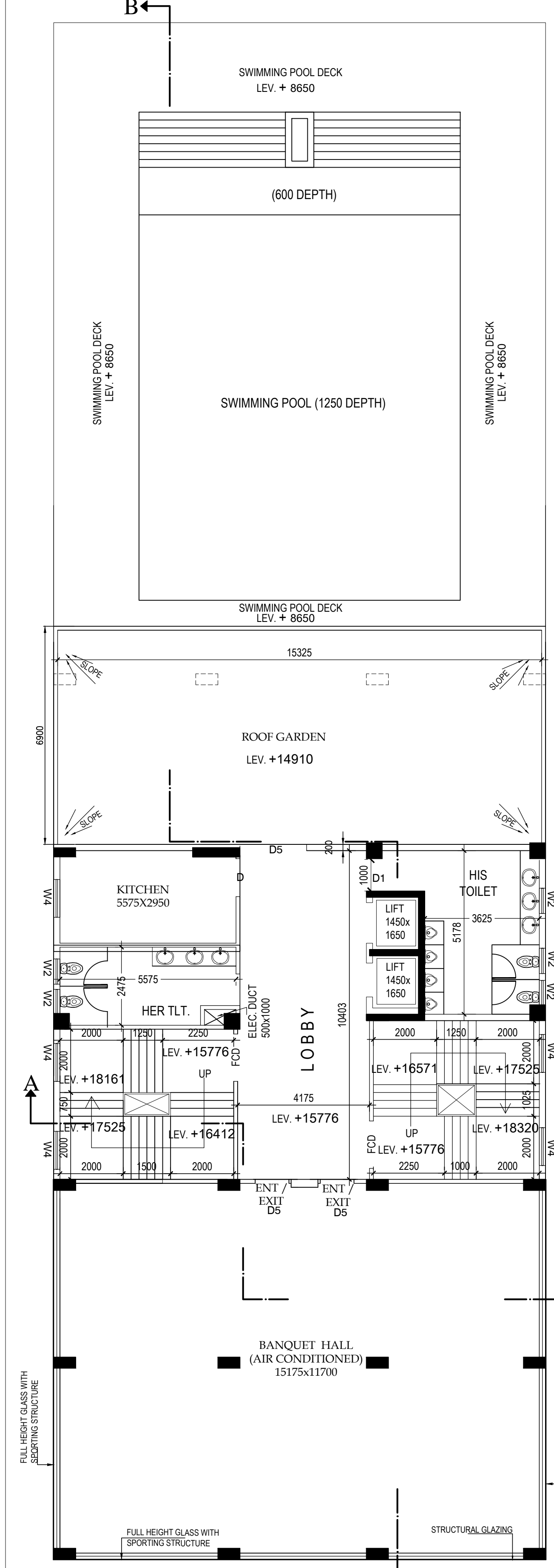
PROPOSED TOTAL FLOOR AREA (BLOCK A) + (BLOCK B) + (BLOCK C)
 (EXCLUDING EXEMPTED AREA) = 9910.260 SQMT + 2425.308 SQMT + 66.561 SQMT = 12402.129 SQMT

TOTAL PROPOSED CAR PARKING AREA = 2340.224 SQMT
 PROPOSED F.A.R. = 12402.129 - 2340.224 = 10061.905 SQMT / 4030.101 = 2.497
 PERMISSIBLE F.A.R. = 2.5

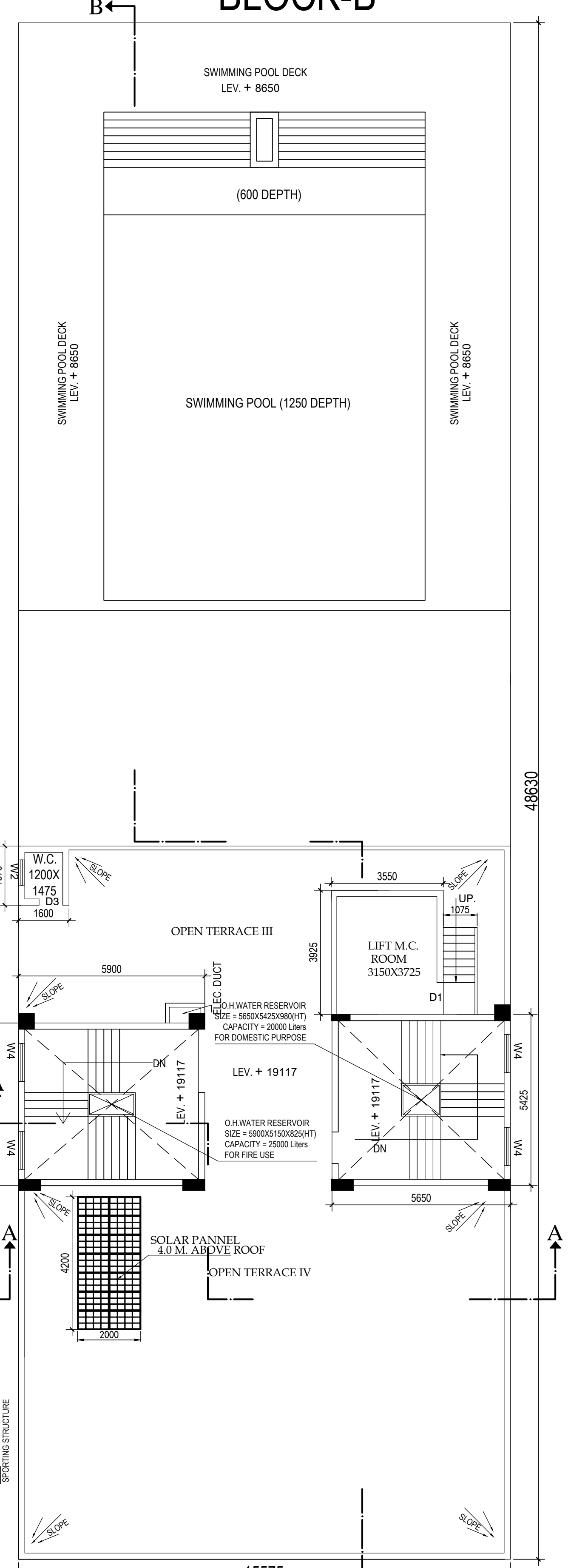
AREA OF STAIR HEAD ROOM: 38.589 SQMT
 STAIR HEAD ROOM AREA IN BLOCK A = 38.589 SQMT
 STAIR HEAD ROOM AREA IN BLOCK B = 61.036 SQMT
 STAIR HEAD ROOM AREA IN BLOCK C = 15.000 SQMT
 LIFT MACHINE ROOM AREA BLOCK A = 33.699 SQMT
 LIFT MACHINE ROOM AREA BLOCK B = 13.933 SQMT
 CUP BOARD AREA IN BLOCK A = 96.3 SQMT
 LOFT AREA IN BLOCK A = 226.393 SQMT
 FIRE REFUSE AREA IN BLOCK A = 60.648 SQMT
 A.C. PLANT ROOM AREA IN BLOCK B = 99.68 SQMT
 ROOF TOILET AREA IN BLOCK B = 3.0 SQMT
 ROOF GARDEN AREA IN BLOCK B = 91.892 SQMT
 OVER HEAD WATER TANK AREA IN BLOCK A = 41.997 SQMT
 OVER HEAD WATER TANK AREA IN BLOCK B = 61.036 SQMT
 OVER HEAD WATER TANK AREA IN BLOCK C = 18.260 SQMT

PLAN PROPOSAL

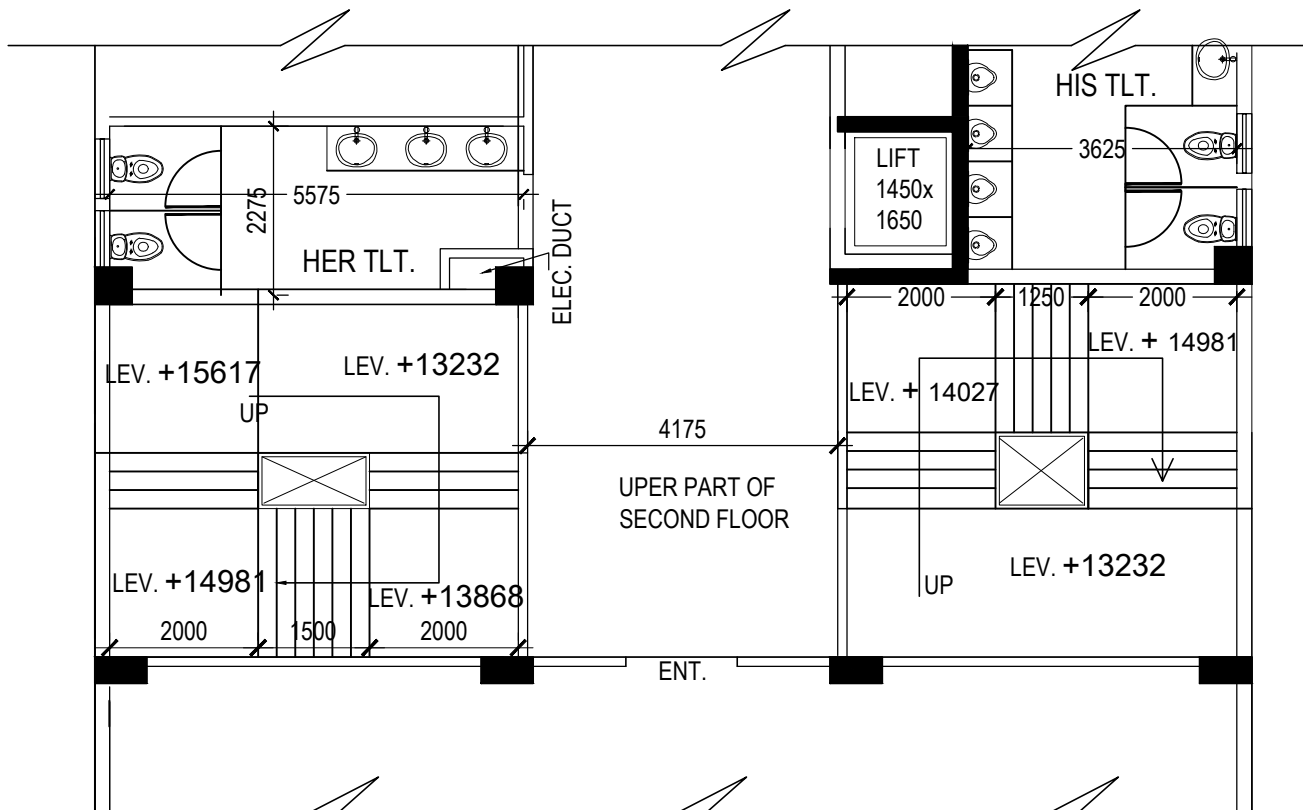
1. ASSESSEE NO.: 11-034-09-0043-1
 2. DETAIL OF REGISTERED DEED:
 A) BOOK NO-1
 VOLUME NO-4
 BEING NO-0817
 PAGES-8998 to 9023
 YEAR- 19. 09. 2012
 PLACE - A.D.S.R. SEALDAH
 AREA OF PLOT OF LAND-4030.101 SQ.M
 GROUND COVERAGE
 BLOCK A= 660.859 SQMT
 BLOCK B= 763.011 SQMT
 BLOCK C= 49.318 SQMT
 PROPOSED TOTAL GROUND COVERAGE = 1473.188 SQMT ie 36.554%
 F.A.R. CONSUMED : 2.497
 TOTAL COVERED AREA : 12404.204 sqm
 TOTAL EXEMPTED AREA : 2208.389 sqm
 TOTAL COVERED AREA OF RESIDENTIAL USE=10014.399 SQMT
 SIZE OF TENEMENTS:
 136.279 SQMT-17 NOS
 138.309 SQMT-17 NOS
 167.626 SQMT-14 NOS
 166.452 SQMT-14 NOS
 142.054 SQMT-1 NO
 138.912 SQMT-1 NO
 102.424 SQMT-1 NO
 95.185 SQMT-3 NOS
 TOTAL - 68 NOS.
 TOTAL REQUIRED NO OF CAR PARKING
 1) RESIDENTIAL USE = 66 NOS.
 2) MERCANTILE USE = 3 NOS.
 3) STORAGE USE = NIL
 4) ASSEMBLY USE = 22 NOS.
 TOTAL = 91 NOS.
 PROPOSED NO OF CAR PARKING
 COVERED CAR PARKING-80 NOS. + 17 NOS.(2ND LAYER)
 (BASEMENT-48 NOS.)
 (GROUND-32 NOS.) + 17 NOS. (2ND LAYER)
 OPEN CAR PARKING SPACE-29 NOS.
 (FROM SERIAL NO. 98 TO 126)
 TOTAL = 126 NOS.
 PROPOSED CAR PARKING AREA
 BLOCK A
 BASEMENT-PROVIDED=881.126 SQMT
 EXEMPTED=880.0 SQMT
 GROUND = 358.632 SQMT
 BLOCK B
 BASEMENT-744.984 SQMT
 GROUND = 356.608 SQMT
 TOTAL COVERED CAR PARKING AREA=2340.224 SQMT
 TOTAL MERCANTILE (RETAIL) AREA
 BLOCK B COVERED AREA 92.188 SQMT
 CARPET AREA 92.188 SQMT
 BLOCK C COVERED AREA 47.263 SQMT
 CARPET AREA 26.006 SQMT
 STORAGE COVERED AREA = 185.197 SQMT
 4) ASSEMBLY BLOCK B (COVERED AREA) (CARPET AREA)
 CATEGORY - a
 YOGA HALL ROOM 221.563 SQMT 86.217 SQMT
 REQUIRED NO OF CAR @ 1 CAR /35 SQMT
 CARPET AREA=6 NOS.
 b) SENIOR GYM KHANA 230.291 SQMT 89.867 SQMT
 JUNIOR CLUB 54.672 SQMT 19.749 SQMT
 SENIOR CLUB 209.432 SQMT 84.240 SQMT
 JUNIOR GYM KHANA 227.676 SQMT 91.845 SQMT
 RESTAURANT 307.742 SQMT 122.389 SQMT
 BANQUET HALL 515.155 SQMT 193.993 SQMT
 TOTAL COVERED AREA OF CATEGORY (b) = 1544.868 SQMT
 TOTAL CARPET AREA OF CATEGORY (b) = 688.30 SQMT
 REQUIRED NO OF CAR @ 1 CAR /35 SQMT AND PART THEREOF CARPET AREA=20 NOS.
 TOTAL COVERED AREA OF ASSEMBLY USE = (a+b)=1766.531 SQMT
 TOTAL CARPET AREA OF ASSEMBLY USE = (a+b)=774.517 SQMT
 ASSEMBLY BLOCK C
 REHABILITATION OF K.M.C. PAY & USE TOILET
 COVERED AREA=49.318 SQMT
 CARPET AREA = 27.881 SQMT



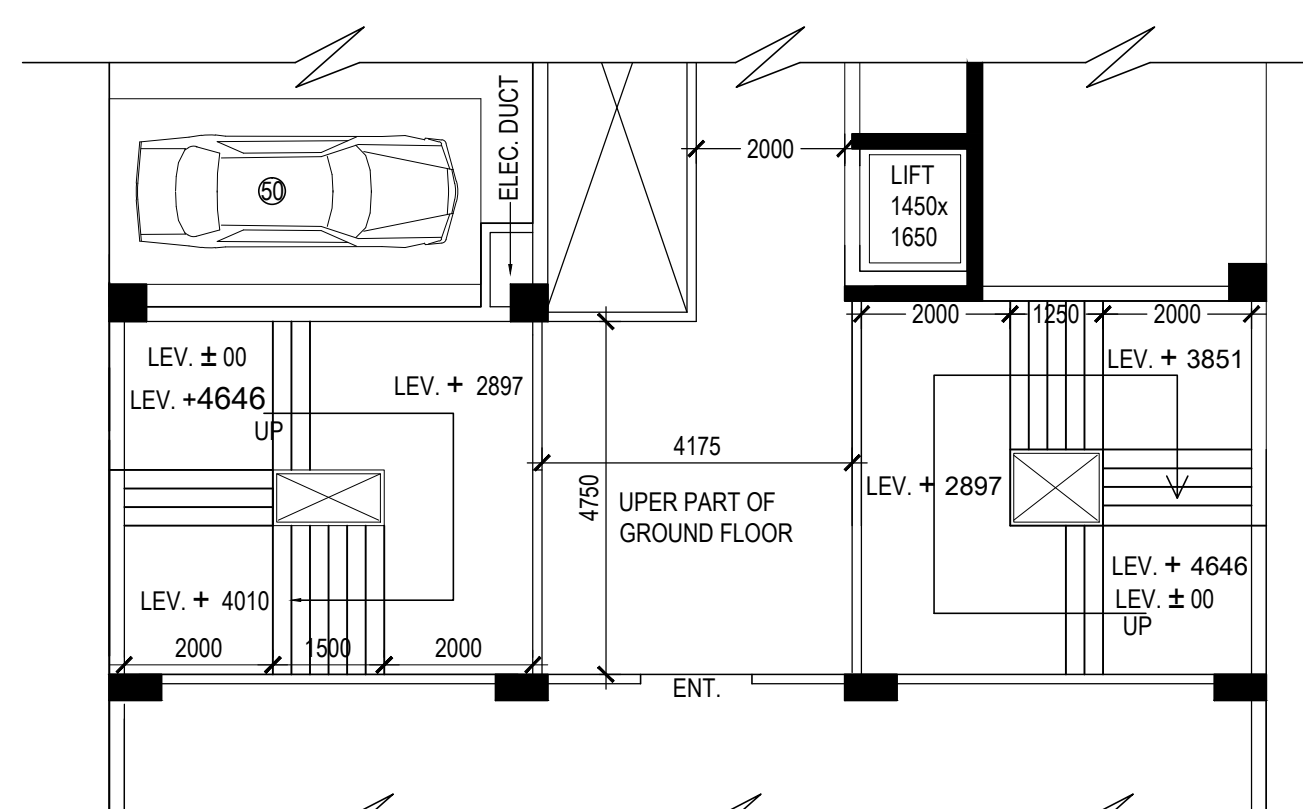
THIRD FLOOR
BLOCK-B



ROOF PLAN
BLOCK-B

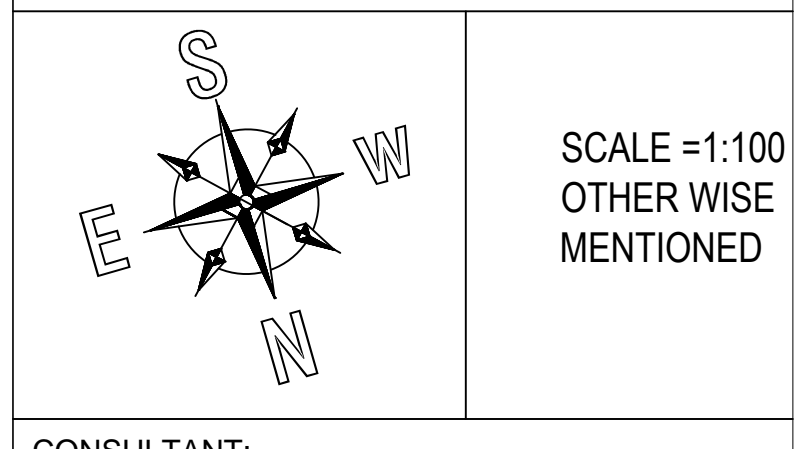


PART INTERMEDIATE PLAN OF STAIR CASES
FROM SECOND FLOOR TO THIRD FLOOR
BLOCK - B



PART INTERMEDIATE PLAN OF STAIR CASES
FROM GROUND FLOOR TO FIRST FLOOR
BLOCK - B

SHEET No. 3 of 9



CONSULTANT:
 GAUTAM CHAKRABARTI
 M/s. Chakrabarti Group
 ARCHITECTS & ENGINEERS
 60, MUZAFFAR AHMED STREET
 KOLKATA-700 016
 PH-222-64646

CERTIFICATE OF STRUCT. ENGINEER:

FOUNDATION & THE STRUCTURAL DESIGN & DRAWING OF BOTH HAS BEEN MADE BY ME SUPERSTRUCTURE OF THE BUILDING LOADS INCLUDING THE SEISMIC LOAD CONSIDERING ALL POSSIBLE AS PER THE NATIONAL BUILDING CODE OF INDIA & CERTIFIED THAT IT IS SAFE IN ALL RESPECTS.

SIGNATURE OF STRUCTURAL ENGINEER

CERTIFICATE OF ARCHITECT/ LBS :

THIS IS TO CERTIFY WITH FULL RESPONSIBILITY THAT THE PLAN HAS BEEN DRAWN UP AS PER PROVISION OF C.M.C BUILDING RULES 2009 AS AMENDED FROM TIME TO TIME AND THE SITE CONDITION INCLUDING THE WIDTH OF THE ABUTTING ROAD/Common Passage CONFORM WITH THE PLAN AND NOT A TANK OR FILLED UP TANK ALSO CERTIFY THAT THE BOUNDARY OF THE PREMISES DOES PHYSICALLY AGREE WITH THE PLAN.

SIGNATURE OF ARCHITECT/L.B.S.

PROPOSED BLOCKS OF BUILDINGS (BLOCK-A BASEMENT + GROUND + SERVICE FLOOR + PARTLY XV + XVI + XVII + XVIII STORIED RESIDENTIAL BUILDING OF HT:- 60.0 M), (BLOCK-B BASEMENT + GROUND +SERVICE FLOOR + PARTLY II + III STORIED ASSEMBLY BUILDING OF HT:- 19.117 M) & (BLOCK-C TWO STORIED BUILDING IS FOR ASSEMBLY USE OF HT:- 6.65 M) AT PREMISES NO- 150A, DR. SURESH CHANDRA BANERJEE ROAD, KOLKATA - 700 010, P.S. BELIAGHATA, WARD NO. 34, BOROUGH NO. III, U/S 393 OF K.M.C. ACT 1980 UNDER BUILDING RULE 2009 WITH AMENDMENT NOTIFICATION