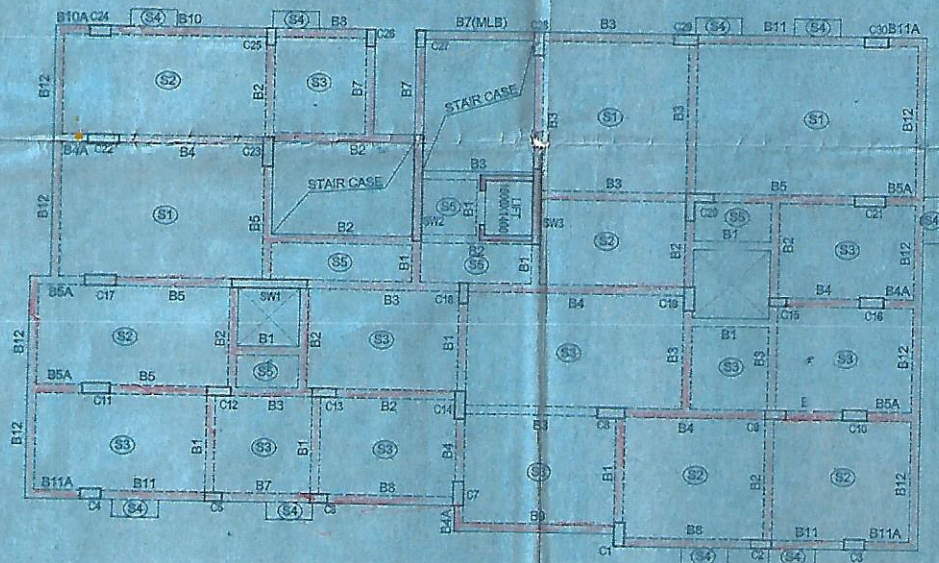


FOUNDATION LAYOUT WITH R.O.C PILE (BLOCK-1)
SCALE - 1:100



TYPICAL (2ND TO 8TH) FLOOR BEAM LAYOUT (BLOCK-1)
SCALE - 1:100

FLOOR BEAM SCHEDULE (CONC. GR-M 25)

BEAM NO	BEAM SIZE	REINFORCEMENT				STIRRUPS
		SUPPORT		SPAN		
		TOP	BOTTOM	TOP	BOTTOM	
B17	(280X500)	2-16Ø	2-16Ø	2-16Ø	2-16Ø	2L-3Ø Ø150 cc
B28	(280X500)	3-16Ø	2-16Ø	2-16Ø	3-16Ø	2L-3Ø Ø150 cc
B39	(280X500)	4-16Ø	2-16Ø	2-16Ø	4-16Ø	2L-3Ø Ø150 cc
B410	(280X500)	5-16Ø	2-16Ø	2-16Ø	5-16Ø	2L-3Ø Ø150 cc
B4A10A	(280X500)	5-16Ø	3-16Ø	5-16Ø	3-16Ø	4L-3Ø Ø150 cc
B511	(280X500)	2-25Ø 3-20Ø	3-20Ø	2-20Ø 3-16Ø	3-16Ø	4L-3Ø Ø150 cc
B5A11A	(280X500)	2-25Ø 3-20Ø	3-20Ø	2-25Ø 3-20Ø	3-20Ø	4L-3Ø Ø150 cc
B612	(280X500)	2-16Ø + 1-12Ø	3-16Ø	2-16Ø 1-12Ø	5-16Ø	4L-3Ø Ø150 cc

COLUMN SCHEDULE (GRADE OF CONCRETE-M30) (BLOCK -1)

6TH FL TO ROOF	8-16 MM	10-16 MM	4-16 MM + 8-12 MM	4-16 MM + 8-12 MM	6-16 MM + 8-12 MM	12-16 MM + 8-12 MM	12-16 MM + 8-12 MM	120MMØ (Both faces of c)
4TH FL TO 6TH FL	8-20 MM	10-20 MM	12-16 MM	12-16 MM	14-16 MM	10-20 MM + 10-16 MM	10-20 MM + 10-16 MM	162MMØ (Both faces of c)
2nd FL TO 4TH FL	4-25 MM + 4-20 MM	4-25 MM + 6-20 MM	12-20 MM	12-20 MM	8-20 MM + 6-16 MM	4-25 MM + 16-20 MM	4-25 MM + 16-20 MM	200MMØ (Both faces of c)
FOUNDATION TO 2nd FL	8-25 MM	10-25 MM	12-25 MM	12-25 MM	6-25 MM + 8-20 MM	20-25 MM	20-25 MM	250MMØ (Both faces of c)
SIZE	(250X500)	(300X600)	(280X700)	(300X700)	(300X800)	(300X900)	(800X250X300)	(250X220)
COLUMN MKD	C5, C6, C15, C25, C26	C2, C3, C4, C9, C16, C24	C12, C13 C27	C1, C7, C10 C16, C19, C28 C29, C30	C8, C11, C14	C17, C21 C22, C23	C20	SW-1

PILE SCHEDULE (GRADE OF CONCRETE-M25) (BLOCK-1)

PILE MKD	INDICATED BY	DIAMETER	TERMINATION DEPTH
P1	●	400 MM	20.0 M
P2	○	500 MM	20.0 M

PILE CAP SCHEDULE (GRADE OF CONCRETE-M30)

PILE CAP MKD	NO. OF PILE WITH DIA.	OVERALL DEPTH (D)	LENGTH	BREADTH
PC1	2-450Ø	1000	2100	750
PC2	3-450Ø	1000	2180	750, 190
PC3	3-500Ø	1000	2300	800, 200
PC4	4-450Ø	1000	2100	2100
PC5	4-500Ø	1000	2300	2300
PC6	5-450Ø	1000	750, 3450	750, 540
PC7	5-500Ø	1000	800, 3900	800, 580
PC8	2-500Ø + 4-450Ø	1000	2300	3650
PC9	2-500Ø + 6-450Ø	1000	3450	3085
PC10	2-500Ø + 8-450Ø	1000	760, 3088	3450, 450
PC11	4-500Ø + 6-450Ø	1000	760, 3398	3800, 490