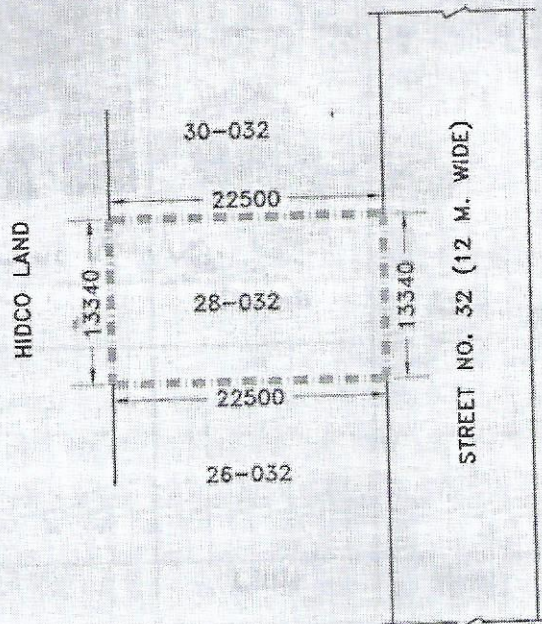


SITE PLAN OF PREMISES NO.28-032 (AC-89)  
OF NEW TOWN, KOLKATA.

SCALE - 1:600

Area = 300.15 Sq.M.



ALL DIMENSIONS ARE IN MM.

*Sanjay*  
General Manager (T & CP)

*D*  
17.12.12

General Manager (Marketing)  
W.D. HIDCO LIMITED



Salt Lake Stadium Complex, Gate No.3, Sector III, Salt Lake, Cal-91.