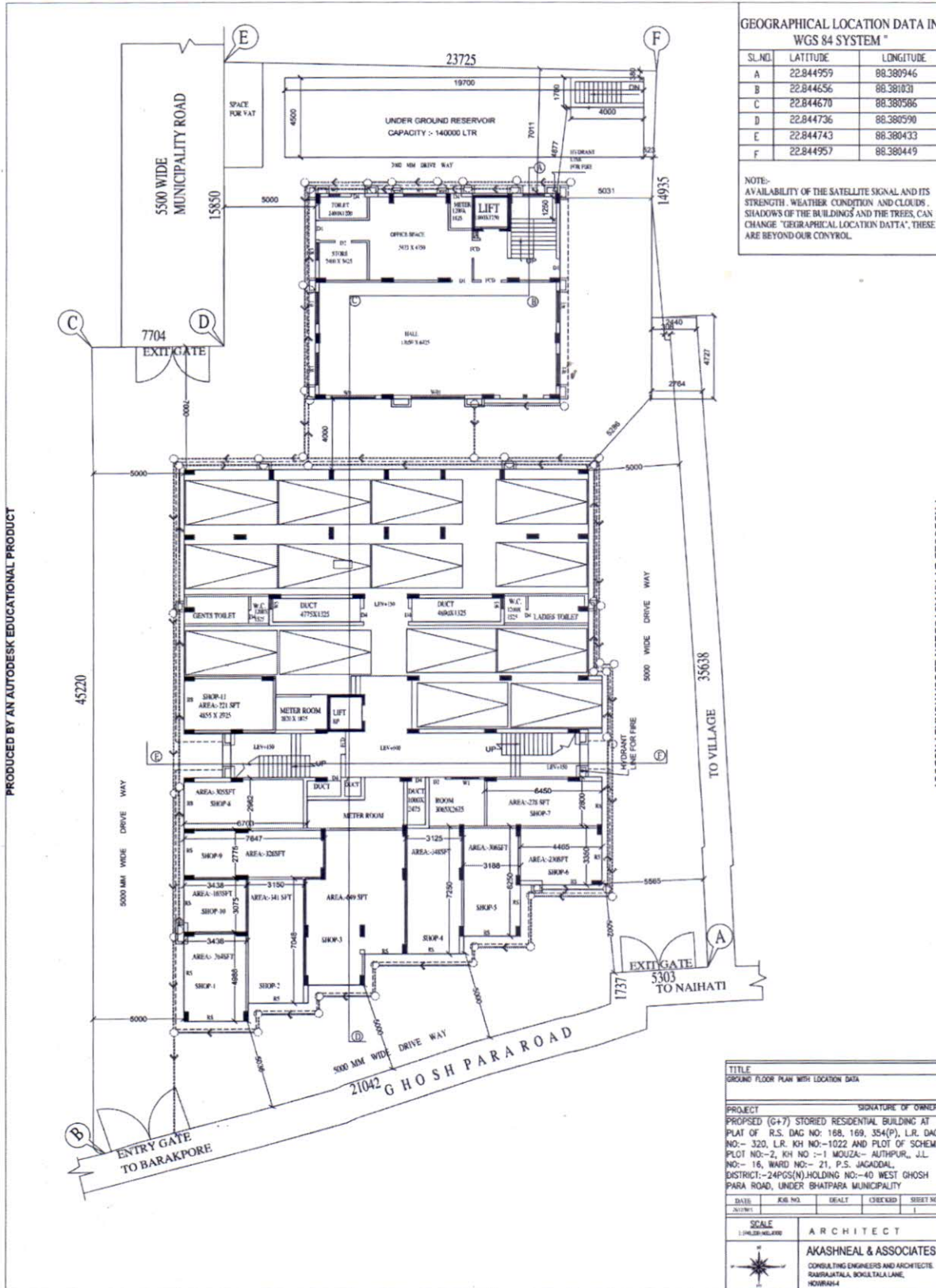


PRODUCED BY AN AUTODESK EDUCATIONAL PRODUCT



GEOGRAPHICAL LOCATION DATA IN WGS 84 SYSTEM *

SL. NO.	LATITUDE	LONGITUDE
A	22.844959	88.380946
B	22.844656	88.381031
C	22.844670	88.380586
D	22.844736	88.380590
E	22.844743	88.380433
F	22.844957	88.380449

NOTE:- AVAILABILITY OF THE SATELLITE SIGNAL AND ITS STRENGTH, WEATHER CONDITION AND CLOUDS, SHADOWS OF THE BUILDINGS AND THE TREES, CAN CHANGE 'GEOGRAPHICAL LOCATION DATA', THESE ARE BEYOND OUR CONTROL.

PRODUCED BY AN AUTODESK EDUCATIONAL PRODUCT

PRODUCED BY AN AUTODESK EDUCATIONAL PRODUCT

TITLE			
GROUND FLOOR PLAN WITH LOCATION DATA			
PROJECT		SIGNATURE OF OWNER	
PROPOSED (G+7) STORED RESIDENTIAL BUILDING AT PLAT OF R.S. DAG NO: 168, 169, 354(P), L.R. DAG NO:- 320, L.R. KH NO:-1022 AND PLOT OF SCHEME PLOT NO:-2, KH NO :-1 MOUZA:- AULHPUR, J.L. NO:- 18, WARD NO:- 21, P.S. JAGADAL, DISTRICT:-24POS(N) HOLDING NO:-40 WEST GHOSH PARA ROAD, UNDER BHATPARA MUNICIPALITY			
DATE	R/S NO.	DEALT	CHECKED
20/01/17			
SCALE		ARCHITECT	
1:100 (METER/METER)		AKASHNEAL & ASSOCIATES	
CONSULTING ENGINEERS AND ARCHITECTS RAJRAJATALA, BOUKTALA LANE, HOWRAH-4			

KRISHNA KAWATCH DEVELOPER
Chhannish Chakraborty
 Partner

PRODUCED BY AN AUTODESK EDUCATIONAL PRODUCT