

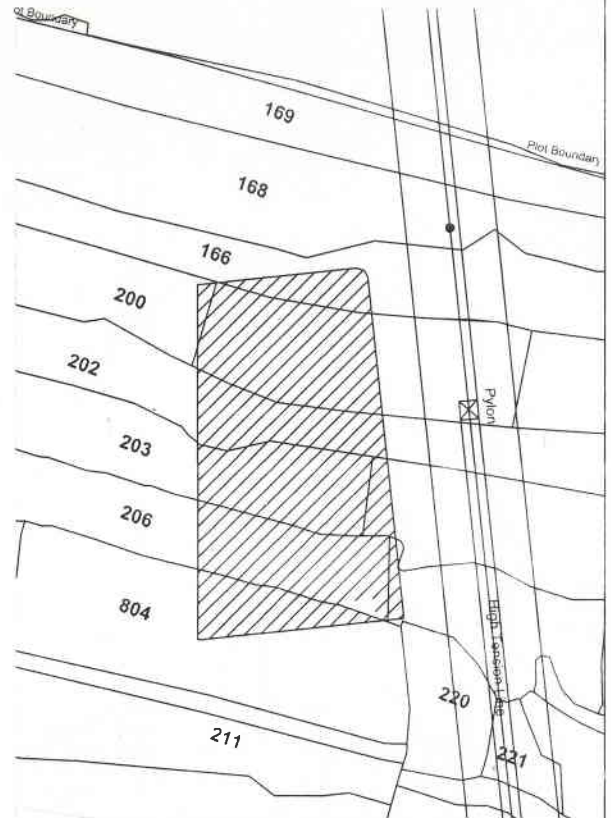
**SITE PLAN G+7 GROUP HOUSING RESIDENTIAL BUILDING. DEVELOPER -
 UTTORA CHRYSANTHEMUM RESIDENCY LLP AT RUPSING JYOTE,
 MOUZA - RUPSING, GOSSAINPUR, P.O. & P.S. - BAGDOGRA,
 DIST. DARJEELING**

LAND SCHEDULE :-
 MOUZA - RUPSING
 J. L. NO.- 95
 P.S.- BAGDOGRA
 Dist.- DARJEELING.

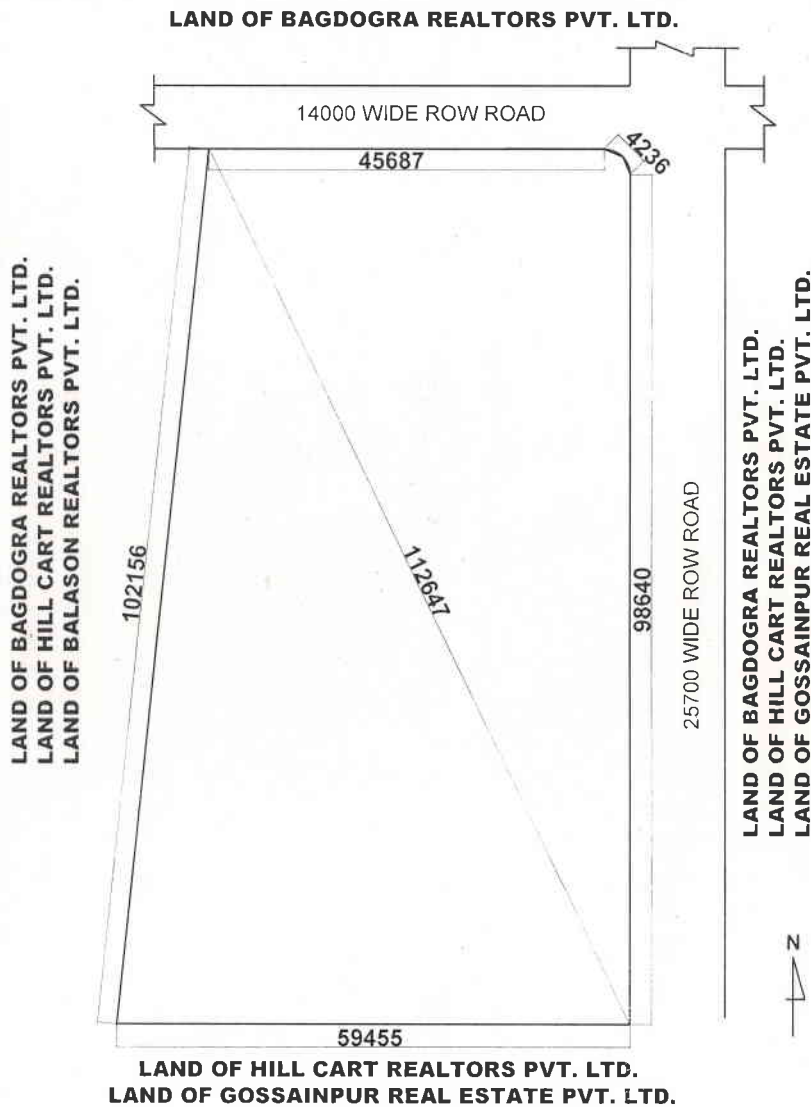
**CENTER POINT OF PLOT - LATITUDE 26.7102,
 LONGITUDE 88.3426
 NE CORNER - LATITUDE 26.7106, LONGITUDE 88.3426
 NW CORNER - LATITUDE 26.7105, LONGITUDE 88.3428
 SE CORNER - LATITUDE 26.7098, LONGITUDE 88.3430
 SW CORNER - LATITUDE 26.7093, LONGITUDE 88.3425**

KHATIAN NO - 960,1115, 1138 & 1164

PLOT NO.	Area in R.S. Acre.
166	0.1403
200	0.3739
202	0.1666
203	0.3355
206	0.27046
804	0.07034
TOTAL	1.3571



MOUZA MAP
 Scale:-32"-1 Mile.



SITE PLAN
 SCALE 1:800

SURVEYED & DRAWN By:-

M/S B. M. Das Sons

M/S B. M. DAS SONS
 (Govt. Approved surveyor)
 P.C. Sarkar sarani, Hakimpara,
 Siliguri.