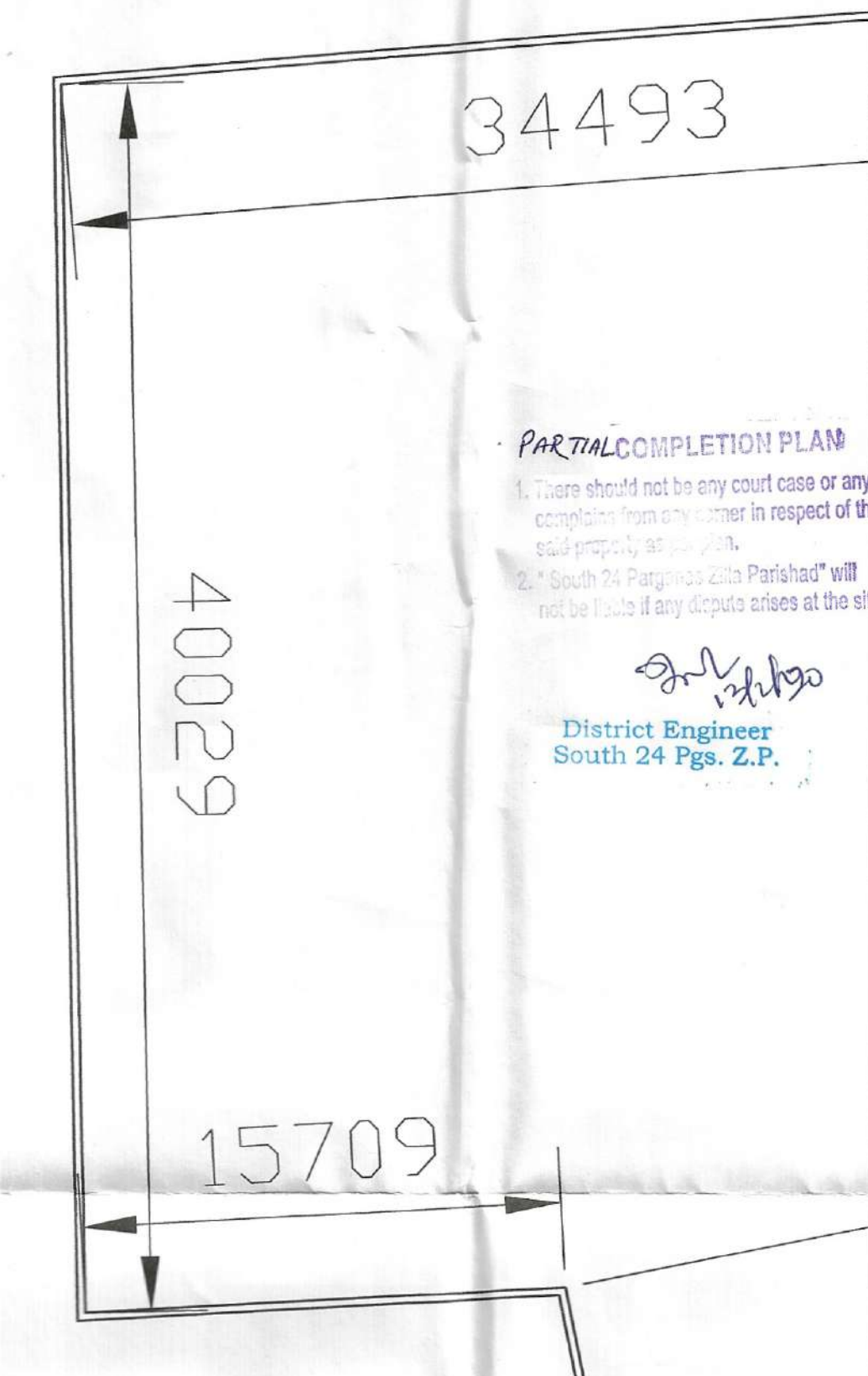
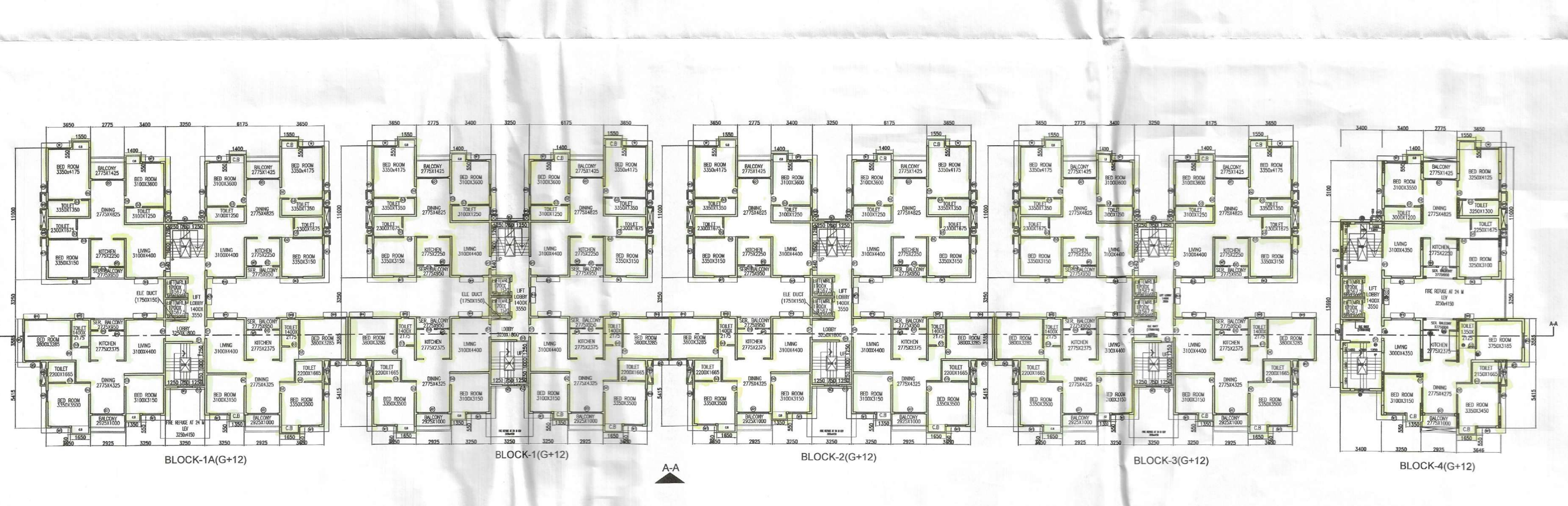
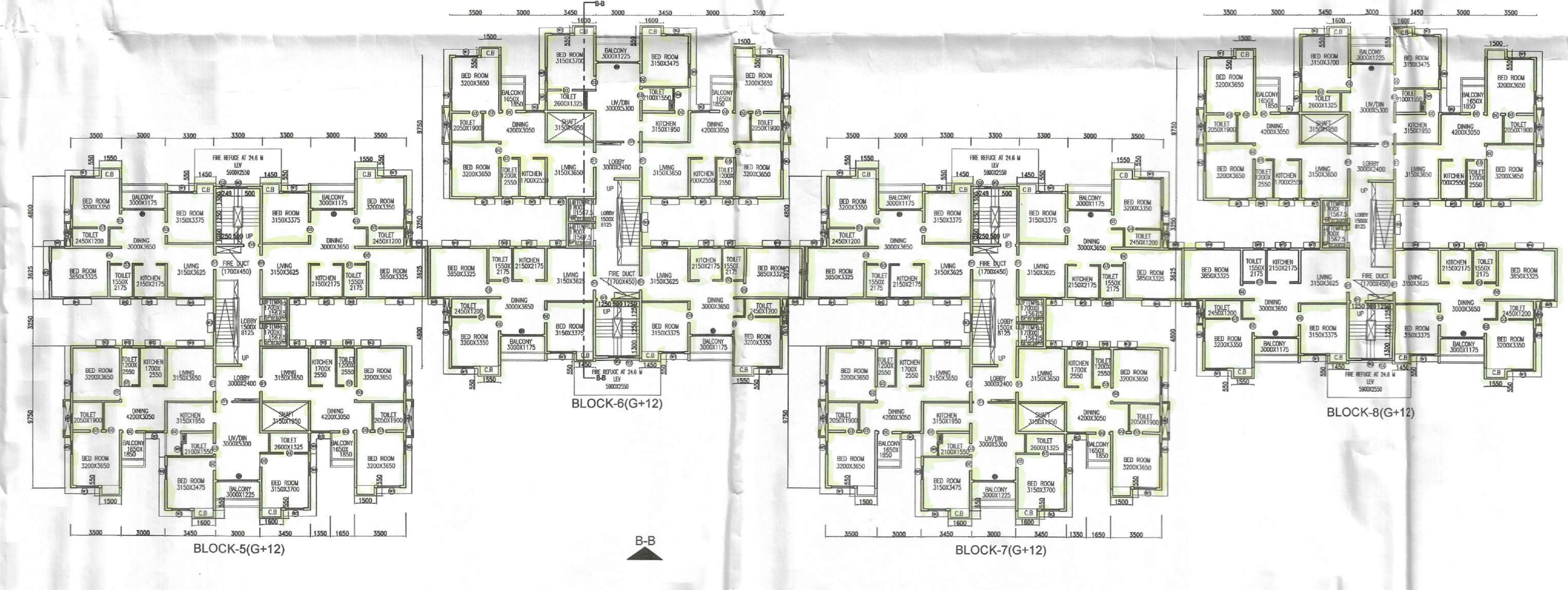
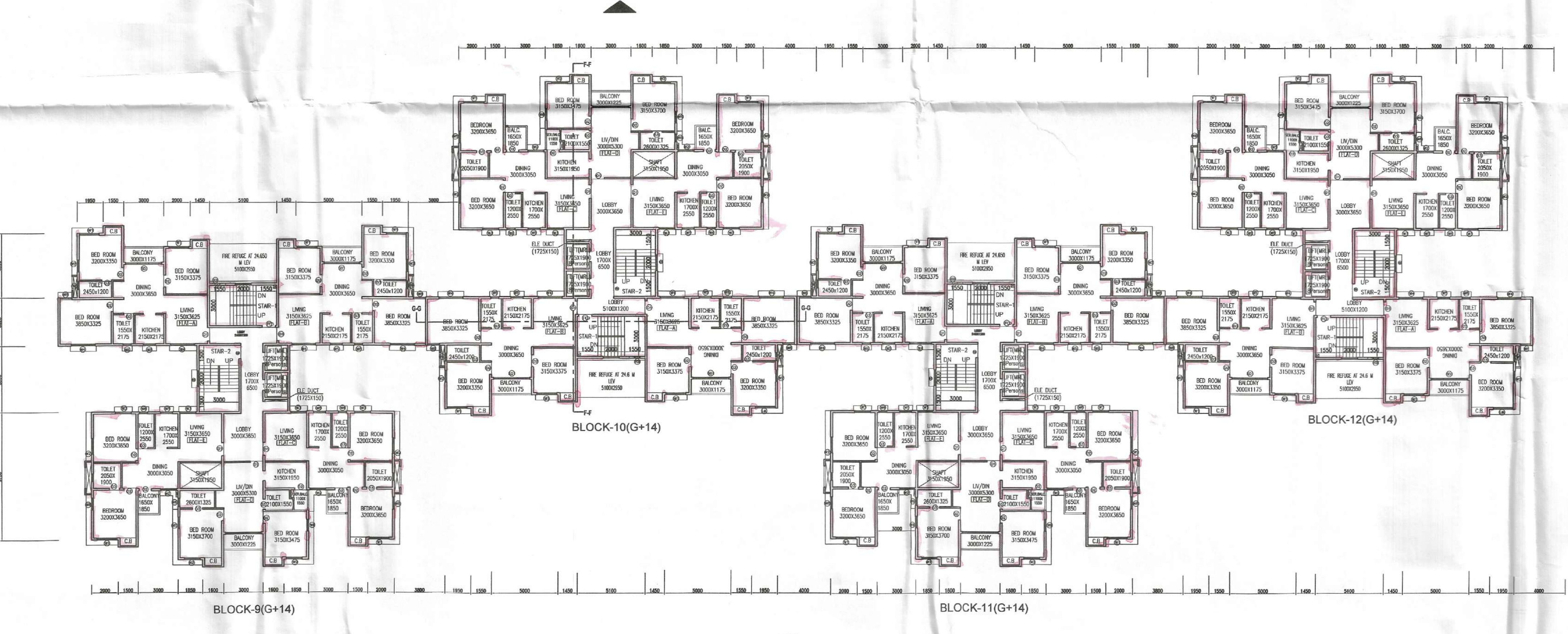
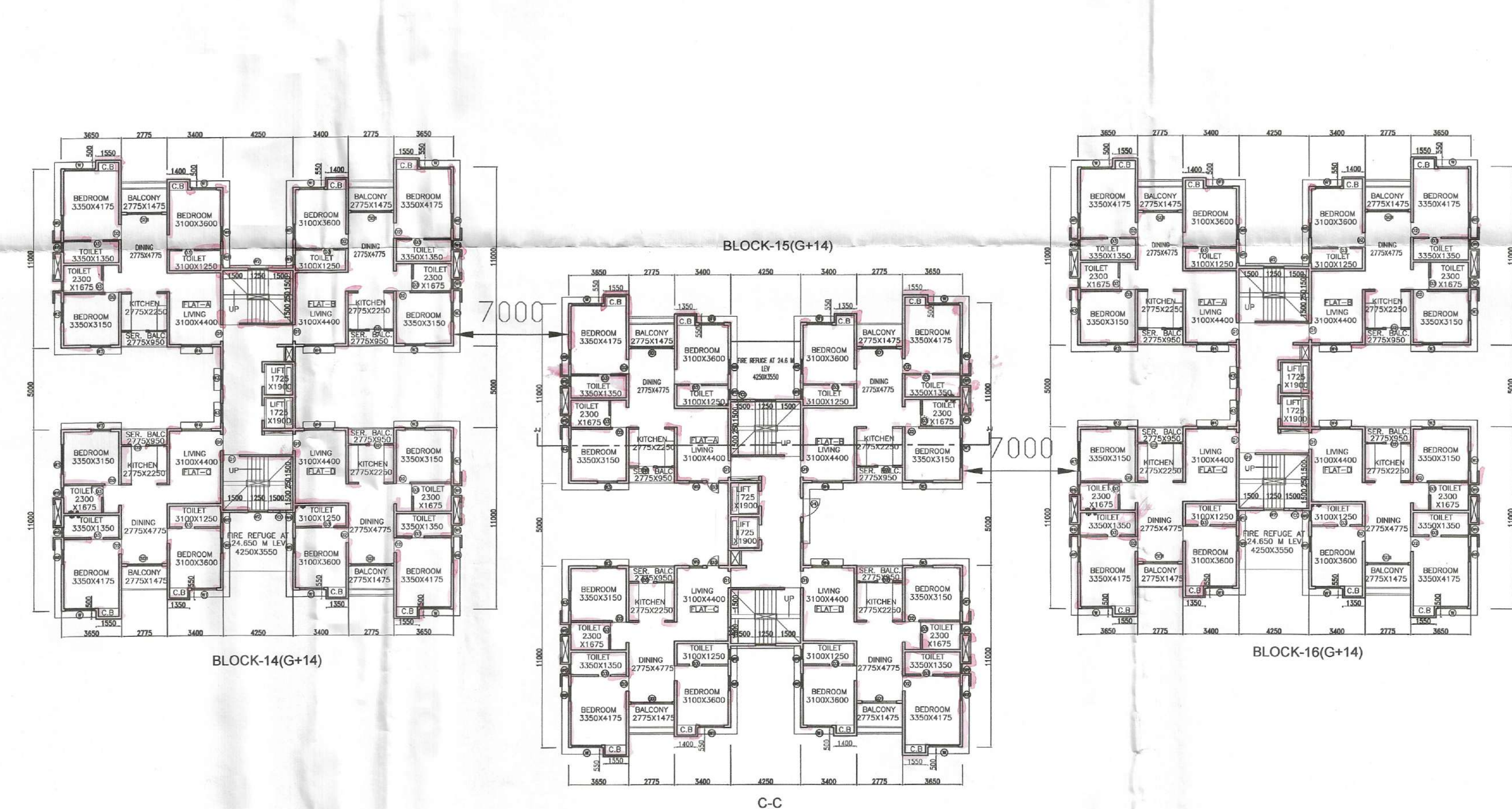
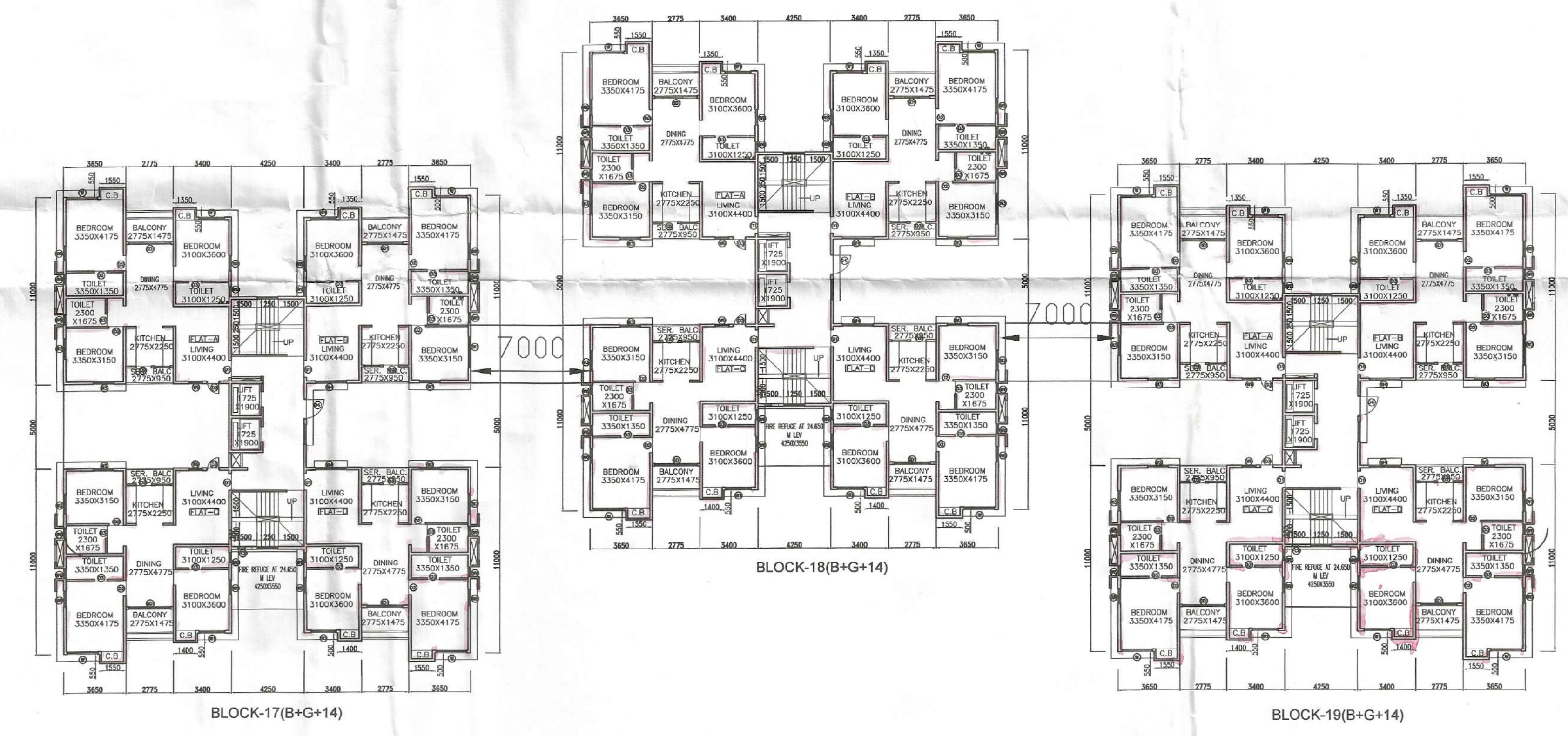
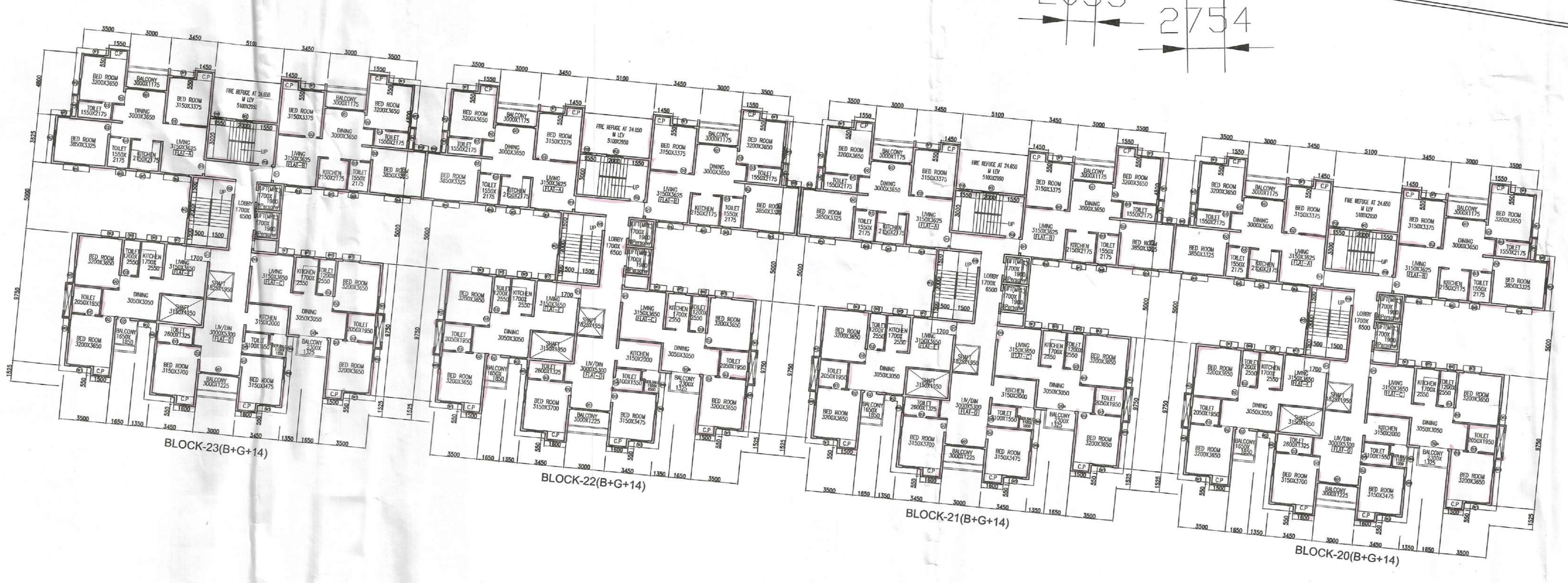


2053 2754



PARTIAL COMPLETION PLAN
 I have verified that the cost of work or any
 completion work is in order in respect of the
 said project.
 District Engineer
 South 24 Pgs. 2/3

PROJECT
 PARTIAL COMPLETION PLAN OF PROPOSED RESIDENTIAL
 COMPLEX FOR
 DTC SOUTHERN HEIGHTS AT JOKA
 DIAMOND HARBOUR ROAD P.O. - JOKA P.S.-BISHNUPUR
 MOUZA - DOLATPUR BLOCK-BISHNUPUR I.I. NO. - 79
 DAG NO. - 12, 13, 18, 19, 21, 24, 25, 26, 51, 52, 53, 54, 55, 56, 57, 58, 67
 MOUZA DAULATPUR, JI No-79 UNDER KULERDARI GRAM
 (SAVAYEVIC-DIST-24 PARGANAS)

1. ALL DIMENSIONS ARE IN MM UNLESS OTHERWISE SPECIFIED
 2. ALL EXTERNAL BRICK WALLS ARE 200 MM THICK
 AND INTERNAL 100 MM THICK UNLESS OTHERWISE SPECIFIED
 3. ALL BROCKWORK PLASTERING INSIDE OR OUTSIDE ARE IN THE
 FINISH OF CLASS WORK RESPECTIVELY AND
 OUTSIDE PLASTERING COATING WATER PROOFING

SCHEDULE OF DOORS & WINDOWS

NO.	TYPE	WIDTH	HEIGHT	NO.	TYPE	WIDTH	HEIGHT
01	WT	1100	2100	01	WT	1000	800
02	WT	1000	2100	02	WT	1000	800
03	WT	1000	2100	03	WT	1000	1000
04	WT	1000	2100	04	WT	800	1000
05	WT	1000	2100	05	WT	1000	1000
06	WT	1000	2100	06	WT	1000	1000

APRASH JAIN
 Director DTC Projects Pvt. Ltd.
 Qualified Architect for
 Author Director Pvt. Ltd. and
 Other Projects

SIGNATURE OF OWNER & SEAL
 Utpal Sanyal
 B.E., A.C.E. (STRUCTURE)
 B.A.E. (CIVIL)
 B.A.E. (ELECTRICAL)
 B.A.E. (MECHANICAL)
 B.A.E. (SANITARY)
 B.A.E. (WATER SUPPLY)
 B.A.E. (HEATING & VENTILATION)
 B.A.E. (REFRIGERATION)
 B.A.E. (AIR CONDITIONING)
 B.A.E. (LIFT & ESCALATOR)
 B.A.E. (ELECTRICAL & TELEPHONE)
 B.A.E. (ELECTRICAL & LIGHTING)
 B.A.E. (ELECTRICAL & POWER)
 B.A.E. (ELECTRICAL & CONTROL)
 B.A.E. (ELECTRICAL & INSTRUMENTATION)
 B.A.E. (ELECTRICAL & MEASUREMENT)
 B.A.E. (ELECTRICAL & TESTING)
 B.A.E. (ELECTRICAL & MAINTENANCE)
 B.A.E. (ELECTRICAL & REPAIRS)
 B.A.E. (ELECTRICAL & OVERHAULING)
 B.A.E. (ELECTRICAL & RECONSTRUCTION)
 B.A.E. (ELECTRICAL & RENOVATION)
 B.A.E. (ELECTRICAL & RESTORATION)
 B.A.E. (ELECTRICAL & PRESERVATION)
 B.A.E. (ELECTRICAL & PROTECTION)
 B.A.E. (ELECTRICAL & SAFETY)
 B.A.E. (ELECTRICAL & SECURITY)
 B.A.E. (ELECTRICAL & SURVEILLANCE)
 B.A.E. (ELECTRICAL & COMMUNICATION)
 B.A.E. (ELECTRICAL & DATA COMMUNICATION)
 B.A.E. (ELECTRICAL & NETWORKING)
 B.A.E. (ELECTRICAL & TELEVISION)
 B.A.E. (ELECTRICAL & AUDIO VISUAL)
 B.A.E. (ELECTRICAL & ENTERTAINMENT)
 B.A.E. (ELECTRICAL & SPORTS)
 B.A.E. (ELECTRICAL & HEALTH CARE)
 B.A.E. (ELECTRICAL & EDUCATION)
 B.A.E. (ELECTRICAL & RESEARCH)
 B.A.E. (ELECTRICAL & DEVELOPMENT)
 B.A.E. (ELECTRICAL & CONSTRUCTION)
 B.A.E. (ELECTRICAL & MANUFACTURING)
 B.A.E. (ELECTRICAL & PROCESSING)
 B.A.E. (ELECTRICAL & DISTRIBUTION)
 B.A.E. (ELECTRICAL & TRANSPORTATION)
 B.A.E. (ELECTRICAL & STORAGE)
 B.A.E. (ELECTRICAL & HANDLING)
 B.A.E. (ELECTRICAL & PACKAGING)
 B.A.E. (ELECTRICAL & MARKETING)
 B.A.E. (ELECTRICAL & SALES)
 B.A.E. (ELECTRICAL & SERVICE)
 B.A.E. (ELECTRICAL & SUPPORT)
 B.A.E. (ELECTRICAL & OPERATIONS)
 B.A.E. (ELECTRICAL & MAINTENANCE)
 B.A.E. (ELECTRICAL & REPAIRS)
 B.A.E. (ELECTRICAL & OVERHAULING)
 B.A.E. (ELECTRICAL & RECONSTRUCTION)
 B.A.E. (ELECTRICAL & RENOVATION)
 B.A.E. (ELECTRICAL & RESTORATION)
 B.A.E. (ELECTRICAL & PRESERVATION)
 B.A.E. (ELECTRICAL & PROTECTION)
 B.A.E. (ELECTRICAL & SAFETY)
 B.A.E. (ELECTRICAL & SECURITY)
 B.A.E. (ELECTRICAL & SURVEILLANCE)
 B.A.E. (ELECTRICAL & COMMUNICATION)
 B.A.E. (ELECTRICAL & DATA COMMUNICATION)
 B.A.E. (ELECTRICAL & NETWORKING)
 B.A.E. (ELECTRICAL & TELEVISION)
 B.A.E. (ELECTRICAL & AUDIO VISUAL)
 B.A.E. (ELECTRICAL & ENTERTAINMENT)
 B.A.E. (ELECTRICAL & SPORTS)
 B.A.E. (ELECTRICAL & HEALTH CARE)
 B.A.E. (ELECTRICAL & EDUCATION)
 B.A.E. (ELECTRICAL & RESEARCH)
 B.A.E. (ELECTRICAL & DEVELOPMENT)
 B.A.E. (ELECTRICAL & CONSTRUCTION)
 B.A.E. (ELECTRICAL & MANUFACTURING)
 B.A.E. (ELECTRICAL & PROCESSING)
 B.A.E. (ELECTRICAL & DISTRIBUTION)
 B.A.E. (ELECTRICAL & TRANSPORTATION)
 B.A.E. (ELECTRICAL & STORAGE)
 B.A.E. (ELECTRICAL & HANDLING)
 B.A.E. (ELECTRICAL & PACKAGING)
 B.A.E. (ELECTRICAL & MARKETING)
 B.A.E. (ELECTRICAL & SALES)
 B.A.E. (ELECTRICAL & SERVICE)
 B.A.E. (ELECTRICAL & SUPPORT)
 B.A.E. (ELECTRICAL & OPERATIONS)

SIGNATURE OF ARCHITECT & SEAL
 DILIP KUMAR SAHU
 Architect - 1980
 Regn. No. CA/89/12368

SCALE: 1/200
 DATE: 20/05/2019
 SHEET NO. 1 OF 1
 TYPICAL FLOOR PLAN

20057 43640 139996

139999

13996