

Team  TM
Taurus
Born to Build

In association with:



presents

**THE
COUNTY**



JV Partner



*Artist Impression, subject to change

ABOUT US



Team Taurus is focussed on creating living environments, which surprise with its ingenuity and design. With us, you can expect something different in every real estate project we create

	<p><i>Sonartori</i> The spirit of your life BAGUHHATI, HATIARA</p>
<p>WOW SALUA, RAJARHAT</p>	
	<p><i>Aryana</i> RECKJONANI, RAJARHAT</p>
<p><i>Kranir haat</i> RECKJONANI, RAJARHAT</p>	

O
U
R
P
R
O
J
E
C
T
S

	<p>Bellagio ACTION AREA 2D NEWTOWN/RAJARHAT</p>
<p>Bellagio ACTION AREA 2D NEWTOWN/RAJARHAT</p>	
	<p>Deja Vu OFF ACTION AREA 1 NEW TOWN</p>
<p>Weather Panchai BORAL, GARIA</p>	

THE
COUNTY



Team
TaurusTM
Born to Build

*Introducing "Disney Themed Living"
for the 1st Time in Eastern India*

**SPREAD OVER 17
ACRES IN PAILAN ON
SOUTH WESTERN
FRINGES OF THE CITY**

**OFFERS 2 MILLION
SQ.FT AND MORE
THAN 2500
APARTMENTS WITH A
"DISNEY ROOM"**

**PRICE THAT MAKES
YOU SMILE.**

**OFFERS "INNOVATIVE
CONCEPT" AT AN
"ATTRACTIVE PRICE"**



THE
COUNTY



10/2012

LOCATIONAL ADVANTAGES

Team
Taurus
Born to Build

- 35 Km from Kolkata Airport
- 0.5 K.M to Pailan School
- 1.5 K.M to Bharat Sevaram Hospital
- 0.2 K.M to ATM
- 0.5 K.M To Market
- 12 K.M From Garia Metro
- 6 K.M from Majherhat Railway Station
- 12 K.M to Tollygunje
- 1.5 K.M from Proposed Metro, Joka

© 2012 Google
Image © 2012 GeoEye

Google earth



2012 2004

22°25'41.15" N 88°17'58.14" E elev 7m

Eye alt 451 m

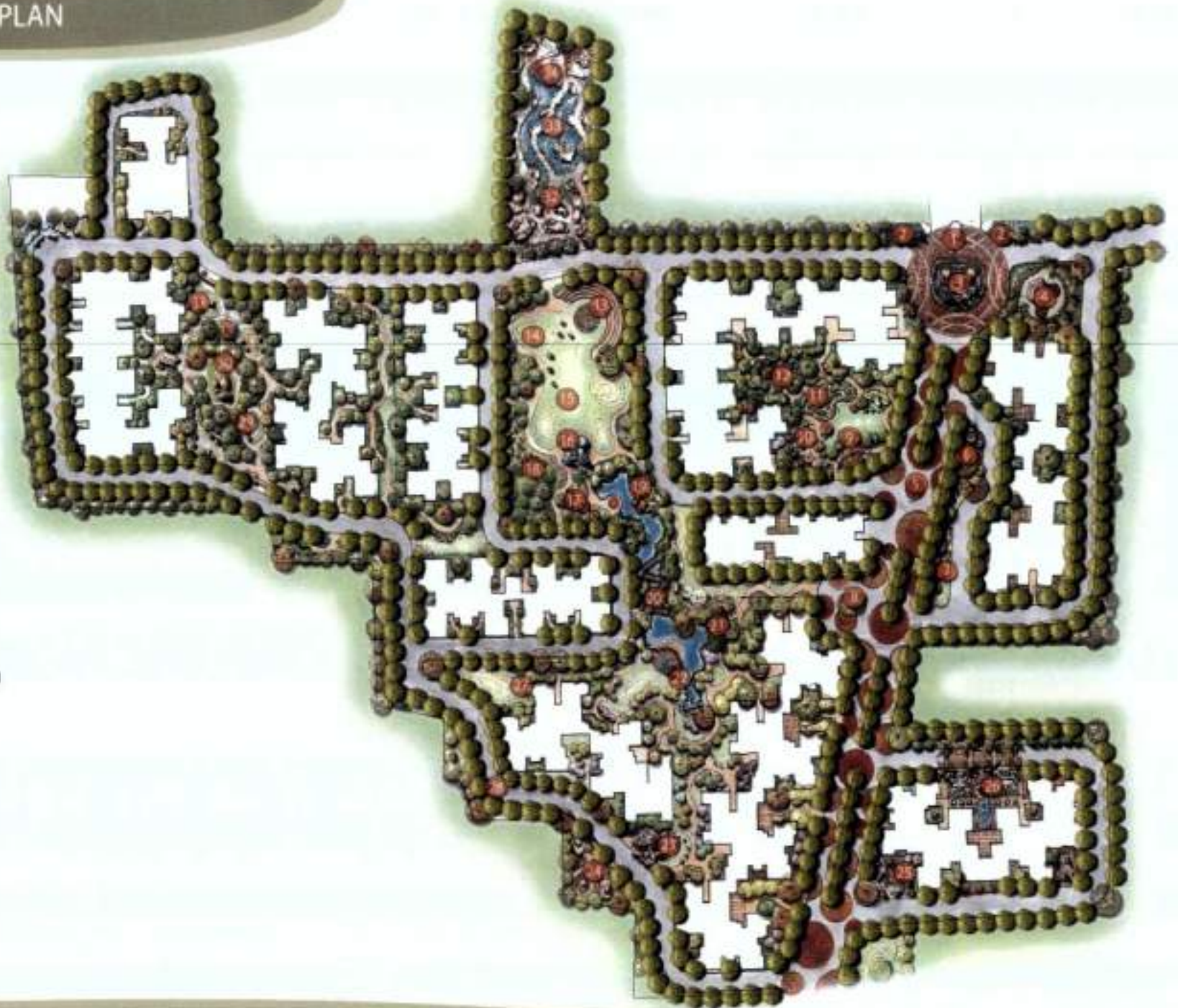
PROJECT DETAIL

Project	THE COUNTY
Location	NEPALGUNJ ROAD, PAILAN , JOKA
Total Land	17 Acres (approx)
Project Configuration	Multiple Towers 11 Blocks
Towers on Offer	Launched
Total Floors	10 Floors
Building configuration	B+ G+ 10
1st Habitable floor	1st Floor
Unit Configuration	1 BHK+KIDS ROOM : 581 and 600 sqft
	2 BHK : 702, 711, 725 sqft & 2 BHK+ KIDS ROOM: 887,895 sqft
	3 BHK: 1014,1040 sqft
Completion	4 years (*subject to force majeure clause)
Development	JV agreement

LANDSCAPE FACILITY PLAN

LEGEND:

1. ENTRY GUARDHOUSE
2. ENTRY DISNEY TOWER FEATURE
3. MINI DISNEY CASTLE
4. MICKEY MOUSE BERM
5. PROMENADE DRIVEWAY
6. (TOY STORY) PLAY AREA
7. ALPHABET BLOCKS PAVILION
8. MICKEY MOUSE SCULPTURE
9. VIEWING TRELIS
10. CHILDREN'S PLAY AREA
11. MAZE GARDEN
12. ALICE IN WONDERLAND GARDEN
13. AMPHITHEATRE
14. BERM GARDEN
15. OPEN TURF AREA
16. PRINCESS CASTLE FEATURE
17. POCAHONTAS FOREST
18. ROSE GARDEN
19. SITTING ALCOVE
20. LINKWAY BRIDGE
21. SNOW WHITE RESTING PAVILION
22. RAPUNZEL CLOCK TOWER
23. SEVEN DWARF SCULPTURES
24. HANSEL AND GRETEL'S CANDY GARDEN
25. HERCULES' ACTIVITY AREA
26. ALADIN'S OPEN GARDEN
27. PICNIC LAWN
28. VEHICULAR DRIVEWAY
29. JUNGLE BOOK FOREST
30. TARZAN'S TREE HOUSE
31. LION KINGS SAFARI
32. FINDING NEMO'S SCULPTURE
33. LITTLE MERMAID'S WATER PLAY
34. PIRATE SHIP





MASTER LAYOUT

AMENITIES

A 17-acre township for you.
**A lifetime of Disney experience for
your family.**



- ◆ Designer Land scape with Amphitheater
- ◆ Separate Children's Club
- ◆ Disney Themed Swimming Pool
- ◆ Baby Pool
- ◆ Cycling Track
- ◆ Lawn Tennis Court
- ◆ Badminton Court
- ◆ Library cum Lounge
- ◆ 24hrs Coffee Shop
- ◆ AC Community Hall
- ◆ Mini Theater
- ◆ Indoor game room
- ◆ Yoga/Meditation Room
- ◆ Emergency Medical Arrangements
- ◆ Bank ATM
- ◆ Playschool and creche



THEME PARKS

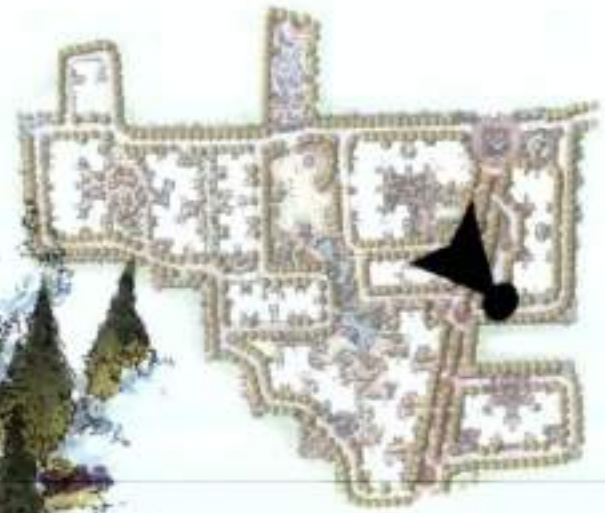


LANDSCAPE ENTRY DISNEY MINI CASTLE PERSPECTIVE



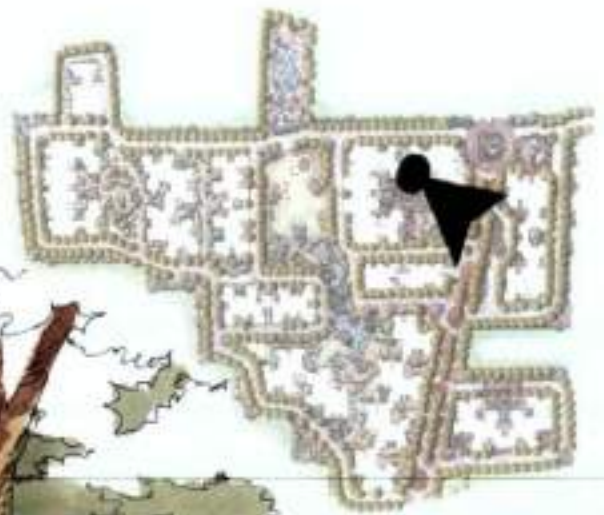
KEY PLAN

LANDSCAPE ALICE IN WONDERLAND MAZE GARDEN PERSPECTIVE



KEY PLAN

LANDSCAPE TOY STORY THEME PLAY AREA PERSPECTIVE



KEY PLAN

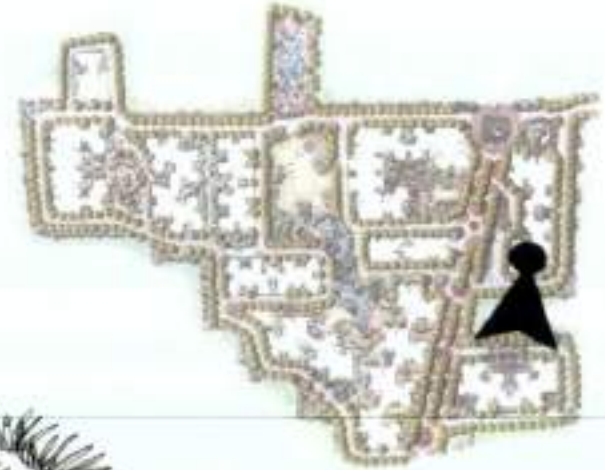
LANDSCAPE OCEAN THEME WATER PLAY PERSPECTIVE



KEY PLAN

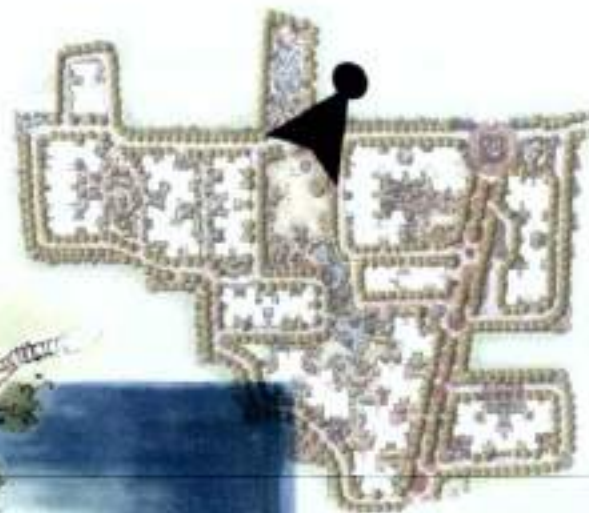


LANDSCAPE ALADDIN THEME GARDEN PERSPECTIVE



KEY PLAN





KEY PLAN

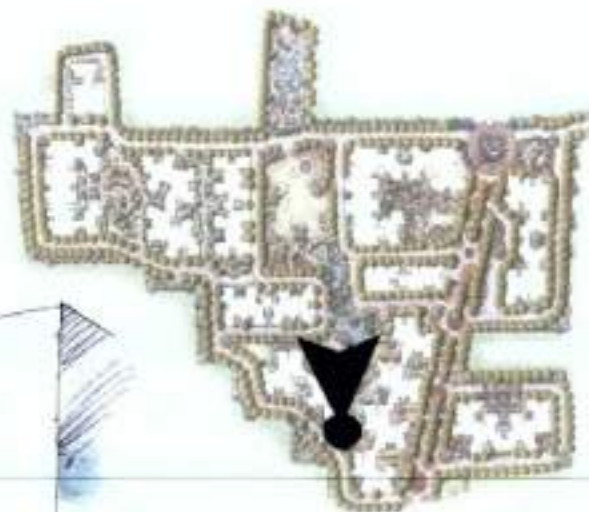
Handwritten signature and date: "V. P. 2013"

LANDSCAPE HANSEL AND GRETEL GARDEN PERSPECTIVE



KEY PLAN

LANDSCAPE RAPUNZEL CLOCK TOWER GARDEN PERSPECTIVE



KEY PLAN



KEY PLAN

Why Invest in 'The County'??

- ✓ *Disney* Brand Awareness in Kolkata is very high (around 85%)
- ✓ Market research proved that 12-15% of total Investment on Interiors is for Children.
- ✓ 1ST Project in Eastern India to have introduced "*Disney Themed Living*"
- ✓ Proposed Joka Metro Connection
- ✓ Reputed Schools with international accreditations and Shopping Complex in close vicinity
- ✓ Very close to *IIM-Joka*.





**THE
COUNTY**



CONTACT US:



Corporate Office:

*D302, Block-D Floor 3, City Center,
Salt Lake, Kolkata-700064*

Phone- *+91 33 40048013/14*

Fax- *+91 33 40048012*

Email- *info@teamtaurus.co.in*

Website- *www.teamtaurus.in*

For sales: +91 9007734444

