

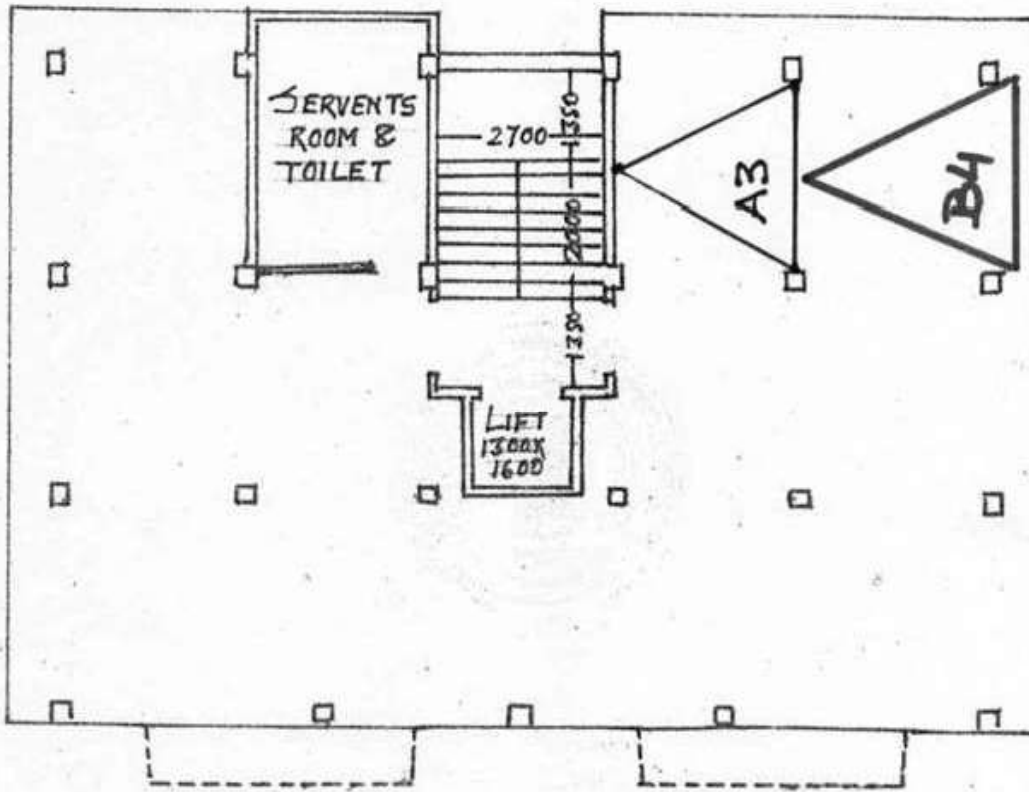
CAR PARKING PLAN

AT PRE. NO. 3398 NAYABAD, KOLKATA-700099

WARD NO. 109, P. S. PURBA JADAVPUR.

SCALE 1:100

CAR PARKING AREA 120 Sq. Ft.



GROUND FLOOR PLAN.



N

Sanjib Kumar Das
Sunder Das
Siddh Das

Copy By:
Jony Bar
Auth. Reg. No.
452997