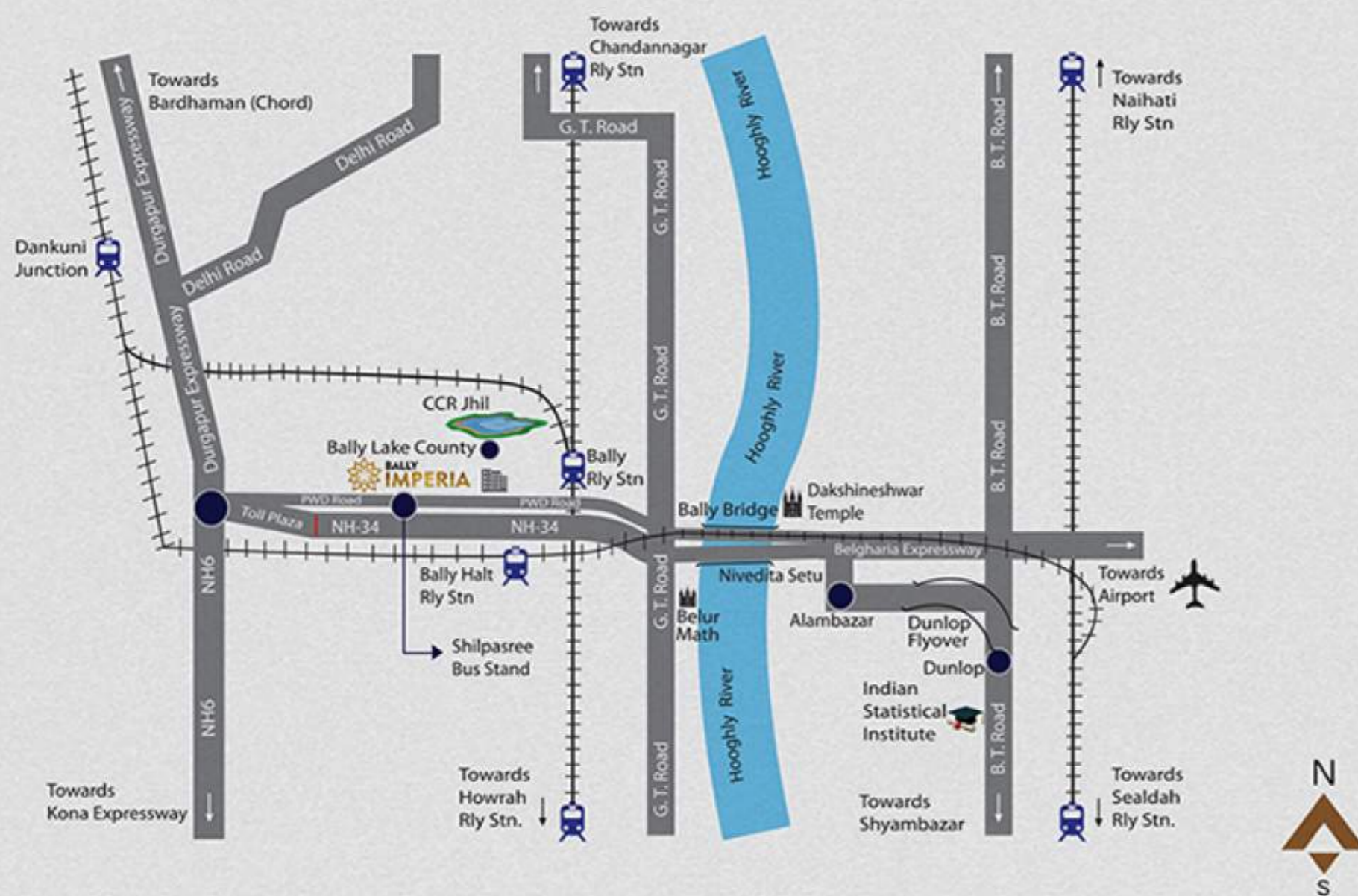




A smart life awaits you!

LOCATION

Strategically located on NH34, it is just minutes away from Bally Railway station and hence well connected to the Airport, Howrah Station, Salt Lake Sector V and other hotspots in Central Kolkata.



November, 2017



Developed by



10C, Ho Chi Minh Sarani
Ground Floor, Kolkata - 700 071

Marketed By



033 4002 4002
sales@pioneerproperty.in

Disclaimer: All information, plans, features and offerings in the brochure are subject to change without prior notice. Photographs used in the brochure are for illustration purposes only and may not bear any resemblance to actual features / offerings. This brochure is not a legal offering or document.

 **BALLY
IMPERIA**

Standing 6 storeys tall, Bally Imperia seamlessly integrates space, style, comfort and all the other elements of a luxurious residence, that is so important for modern day living.

You can indulge in a power workout at the modern gymnasium, invigorate yourself with a game of table tennis in the indoor games room or celebrate your special occasions with your loved ones at the AC community hall on the first floor.

G + 6 STORIED | 50 FLATS



AMENITIES

SPECIFICATIONS



A.C. GYMNASIUM
with Changing Room

A.C. INDOOR GAMES ROOM
Carram & Table Tennis

KIDS PLAY AREA

A.C. COMMUNITY HALL
with Kitchen and Toilet

24 HRS SECURITY

CCTV SURVEILLANCE

POWER BACK-UP



STRUCTURE	:	RCC framed structure with anti termite treatment
WALL FINISH	:	Exterior : Latest durable outer finish Interior : Plaster of Paris punning
FLOORING	:	Bedroom : Vitrified Tiles Living / Dining : Vitrified Tiles
KITCHEN	:	Flooring : Anti-Skid Ceramic Tiles Granite top counter with stainless steel sink Ceramic Tiles upto 2 ft height above the counter Electrical points for Refrigerator, Aquaguard & Exhaust Fan
TOILETS	:	Flooring : Anti-Skid Ceramic Tiles Designer Ceramic Tiles on walls upto door height Sanitary ware of Hindware / Parryware or equivalent make CP fittings of Essco or reputed make Electrical point for Geyser and Exhaust
DOORS & WINDOWS	:	Door Frame : Sal wood Main Door : Decorative laminated door Main Door Fittings : Godrej lock Internal Door : ISI mark flush doors Windows : Standard section aluminium sliding windows
ELECTRICAL & FITTINGS	:	Concealed wiring all around the flat with copper conductors Modular switches of reputed brands Adequate Lighting and power points in all the areas A.C. point in master bedroom Telephone point in Living / Dining Rooms Wiring for Cable / DTH television network with connection in Living/Dining
LIFTS, STAIRS & LOBBIES	:	Lifts of reputed make Stairs : Kota stone/Tiles Entrance : Well-decorated ground floor lobby with marble/granite/vitrified flooring
SECURITY & FIRE FIGHTING	:	Intercom facility in all flats Modern firefighting system



BALLY IMPERIA FLOORS

Ground + 1st Floor
Showrooms & Offices

2nd to 6th Floor
Residential Units





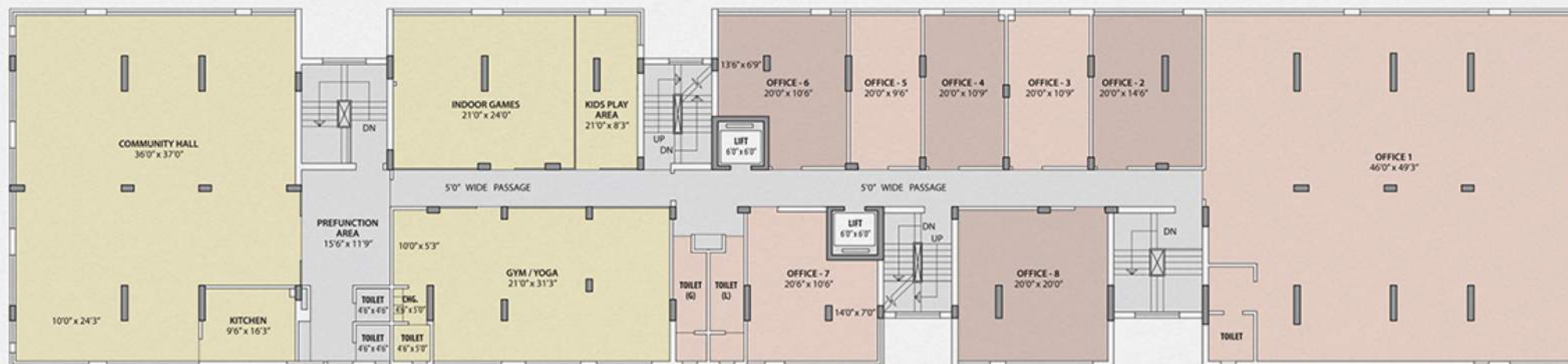
GROUND FLOOR

AREA (sq.ft.)

OFFICES	CARPET AREA	BUILT UP AREA	SALEABLE AREA
SHOWROOM	1715.13	1861.20	2513

16 Covered Car Parking

Size: 2500 x 5000



1ST FLOOR

AREA (sq.ft.)

OFFICES	CARPET AREA	BUILT UP AREA	SALEABLE AREA
FRONT SHOWROOM	2271	2415	3260
OFFICE - 2	293	319	431
OFFICE - 3	218	240	323
OFFICE - 4	214	236	319
OFFICE - 5	190	210	283
OFFICE - 6	299	343	462
OFFICE - 7	301	351	474
OFFICE - 8	399	458	619
TOTAL	4183	4572	6172



2ND FLOOR

AREA (sq.ft.)

UNIT	UNIT TYPE	CARPET AREA	BUILT UP AREA	OPEN TERRACE	SALEABLE AREA
A	3BHK+2TOI.	764	879	36	1172
B	3BHK+2TOI.	764	879	36	1172
C	3BHK+2TOI.	740	852	100	1219
D	2BHK+2TOI.	573	687	104	1012
E	2BHK+2TOI.	597	677	129	1032
F	3BHK+2TOI.	764	878	37	1171
G	3BHK+2TOI.	764	879	36	1171
H	3BHK+2TOI.	740	852	100	1219
I	2BHK+2TOI.	569	687	104	1012
J	2BHK+2TOI.	592	679	127	1032

3RD TO 6TH FLOOR

TYPICAL

AREA (sq.ft.)

UNIT	UNIT TYPE	CARPET AREA	BUILT UP AREA	SALEABLE AREA
A	3BHK+2TOI.	764	879	1125
B	3BHK+2TOI.	764	879	1125
C	3BHK+2TOI.	740	852	1090
D	2BHK+2TOI.	573	687	879
E	2BHK+2TOI.	597	677	866
F	3BHK+2TOI.	764	878	1124
G	3BHK+2TOI.	764	879	1125
H	3BHK+2TOI.	740	852	1091
I	2BHK+2TOI.	569	687	879
J	2BHK+2TOI.	592	679	869

