

PIONEER ASSOCIATES

CONTRACTORS, DEVELOPERS & ENGINEERS

email : annapurnagroup2013@gmail.com

Web. : www.annapurnagroup.net

Ph.: 033-2583-6777

GSTIN : 19AAMFP7725R1Z5

Regd. Off. 12/A/1/35, SHREYASI APARTMENT

Khardah Station Road, Kolkata - 700117

Booking off.: BISWA BINA APARTMENT

114/89, I. C. Road, Rahara, Kol - 700118

Ref. No.....

Date.....

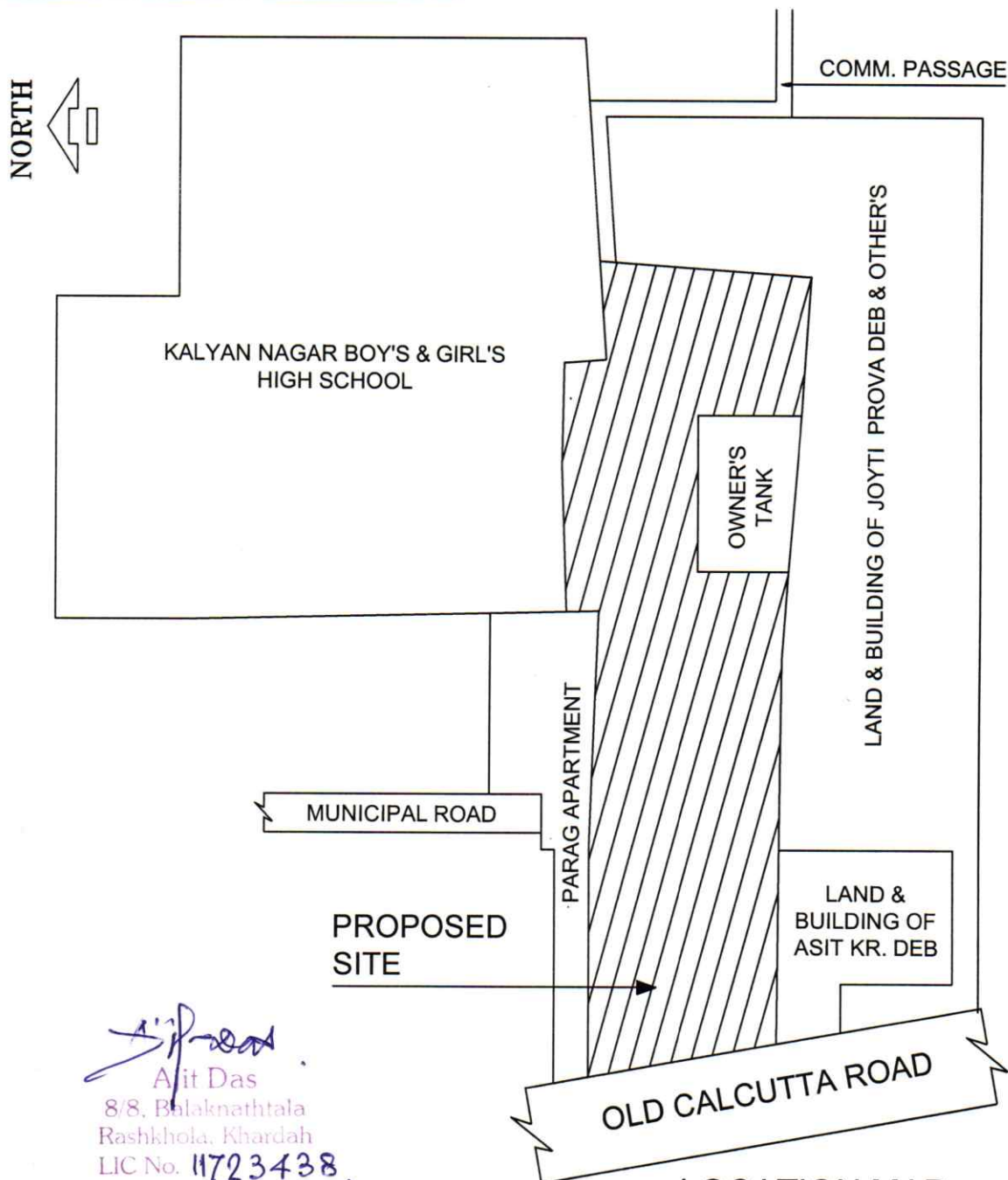
LOCATION DETAILS OF THE PROJECT OF LAND DEDICATED FOR THE PROJECT DEVELOPMENT ALONGWITH ITS BOUNDARIES INCLUDING THE LATITUDE & LONGITUDE OF END-POINTS OF THE PROJECT.

DEVELOPER'S NAME - PIONEER ASSOCIATE

PROPOSED SITE - OMKAR RESIDENCY

LATITUDE - 22.718281 = 22°43'5.81052"N

LONGITUDE - 88.388748 = 88°23'19.49136"E




Arit Das
8/8, Balaknathata
Rashkhola, Khardah
LIC No. 11723438.

SIGNATURE OF L.B.S.

LOCATION MAP

SCALE = 1 : 600