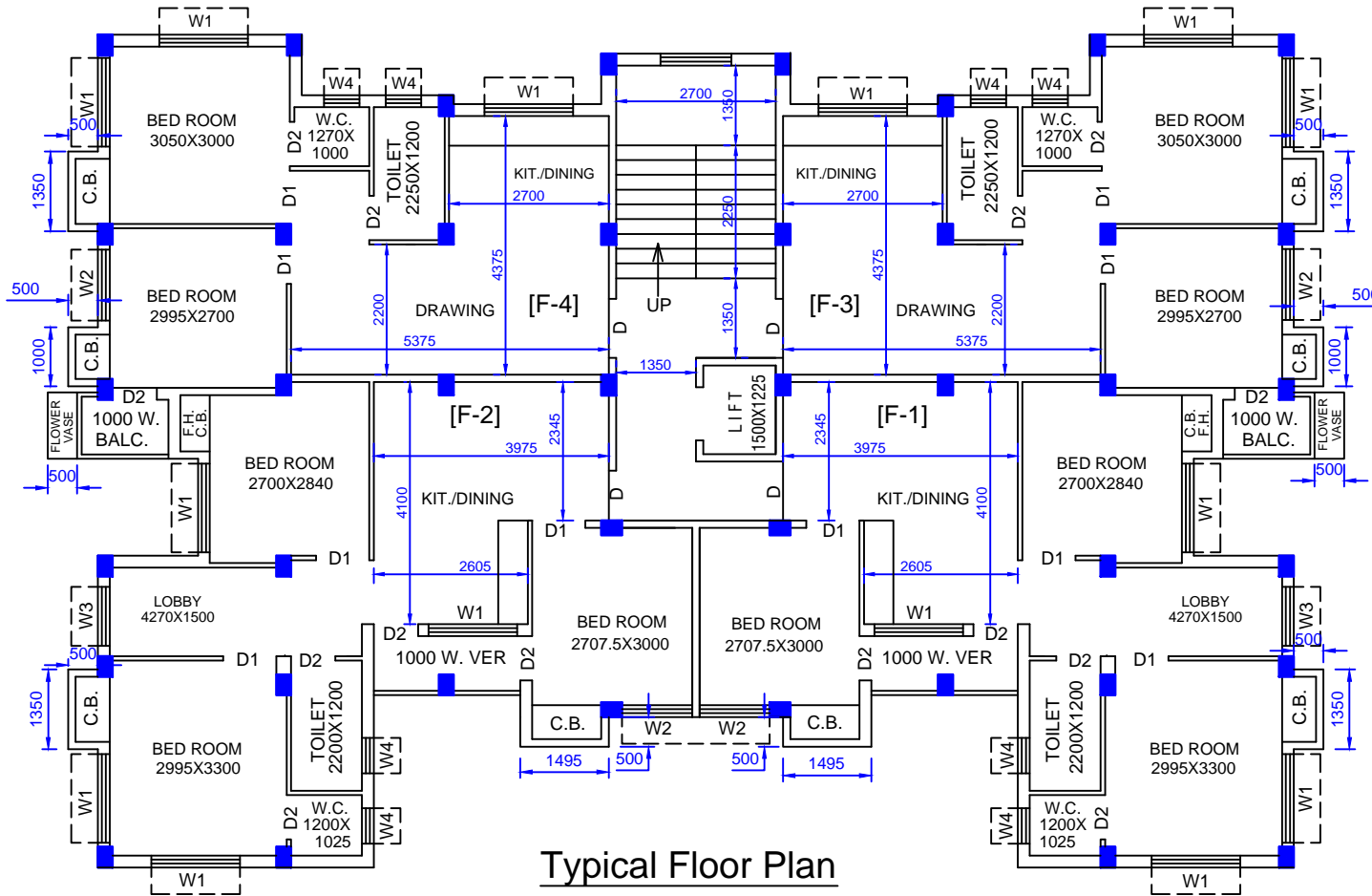


TYPICAL FLOOR PLAN OF PROPOSED G+3 STORIED RESIDENTIAL BUILDING AT
3290, NAYABAD, IN WARD NO.109. BOROUGH NO. XII, UNDER THE K.M.C.



Typical Floor Plan
(1st.,2nd. & 3rd. Floor)

FLAT AREA STATEMENT							
FLAT MARKED	CARPET AREA(FLAT)	CARPET AREA(VER.)	TOTAL CARPET AREA(FLAT)	COVERED AREA	PROP. STAIR & SER. AREA	TENEMENT AREA	FLAT AREA (@25% S.U.B)
FLAT NO-1	53.502 SQ.M	3.216 SQ.M.	56.718 SQ.M.	62.173 SQ.M.	10.708 SQ.M.	72.881 SQ.M.	981 SQ.FT.
FLAT NO-2	53.502 SQ.M	3.216 SQ.M.	56.718 SQ.M.	62.173 SQ.M.	10.708 SQ.M.	72.881 SQ.M.	981 SQ.FT.
FLAT NO-3	42.691 SQ.M.	1.827 SQ.M.	44.518 SQ.M.	48.879 SQ.M.	8.418 SQ.M.	57.297 SQ.M.	771 SQ.FT.
FLAT NO-4	42.691 SQ.M.	1.827 SQ.M.	44.518 SQ.M.	48.879 SQ.M.	8.418 SQ.M.	57.297 SQ.M.	771 SQ.FT.