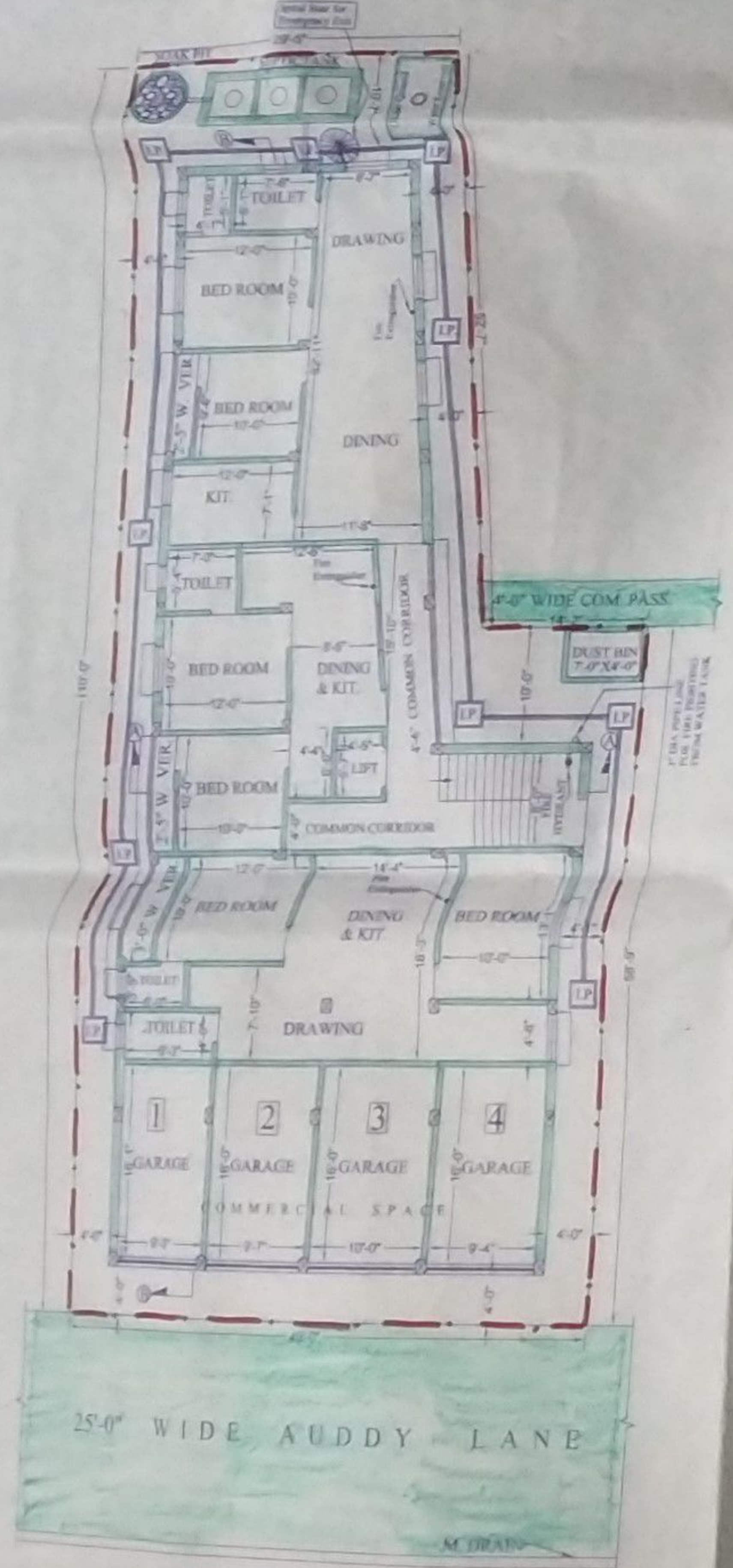
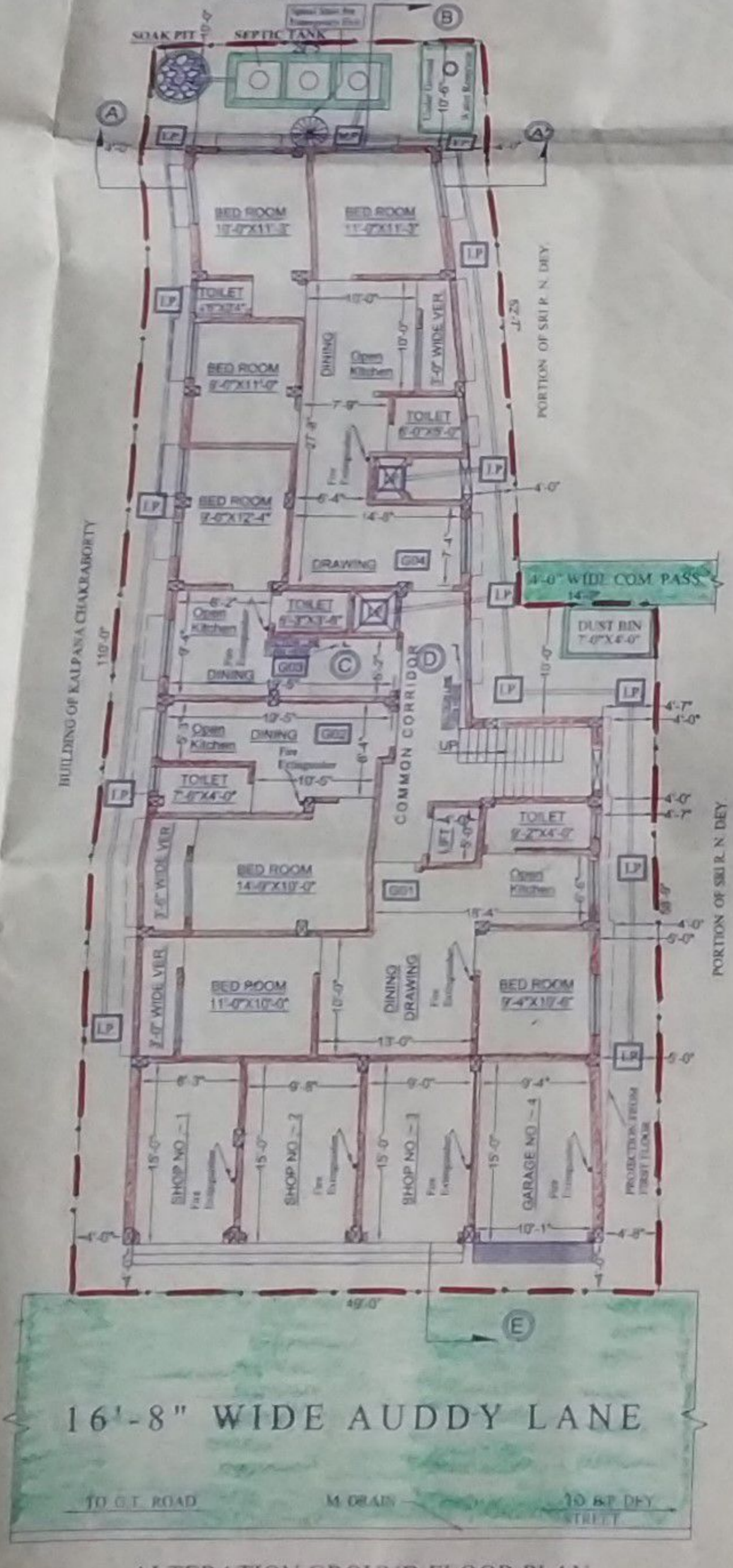


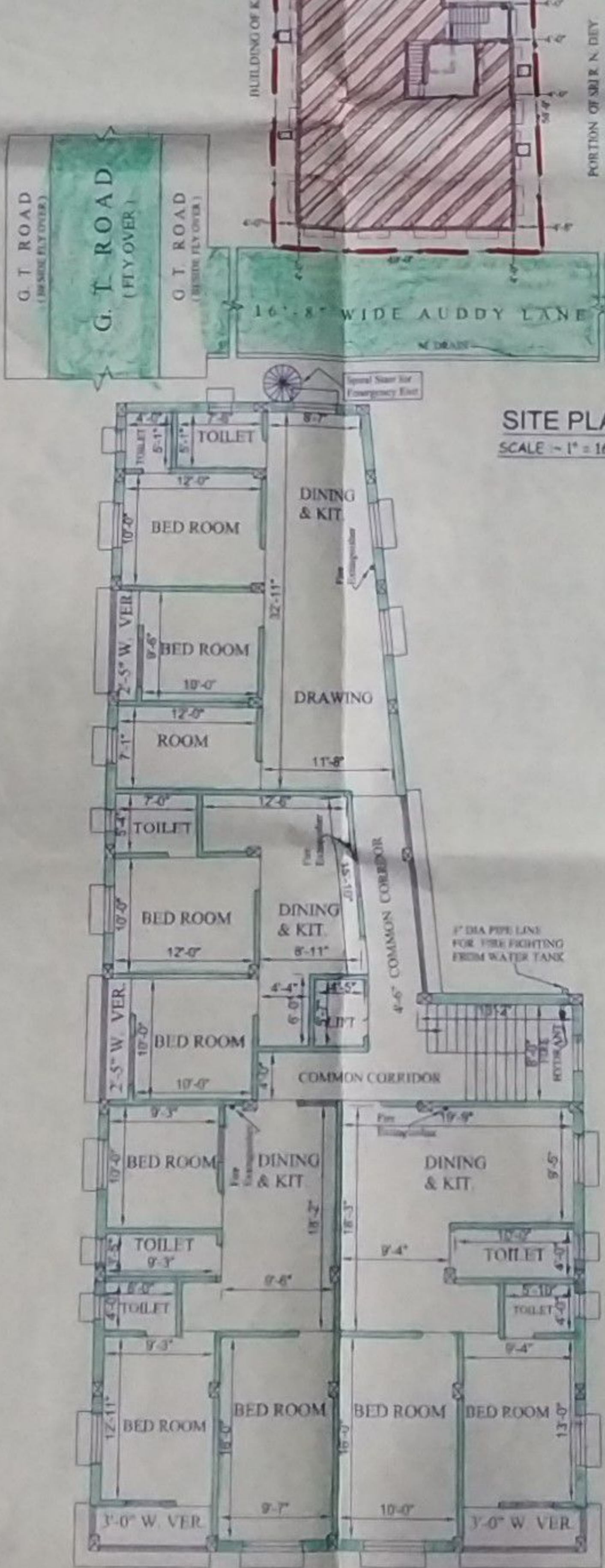
SANCTION PLAN & SECTIONAL ELEVATION OF SEPTIC TANK & SOAK PIT. 1" = 4'-0"



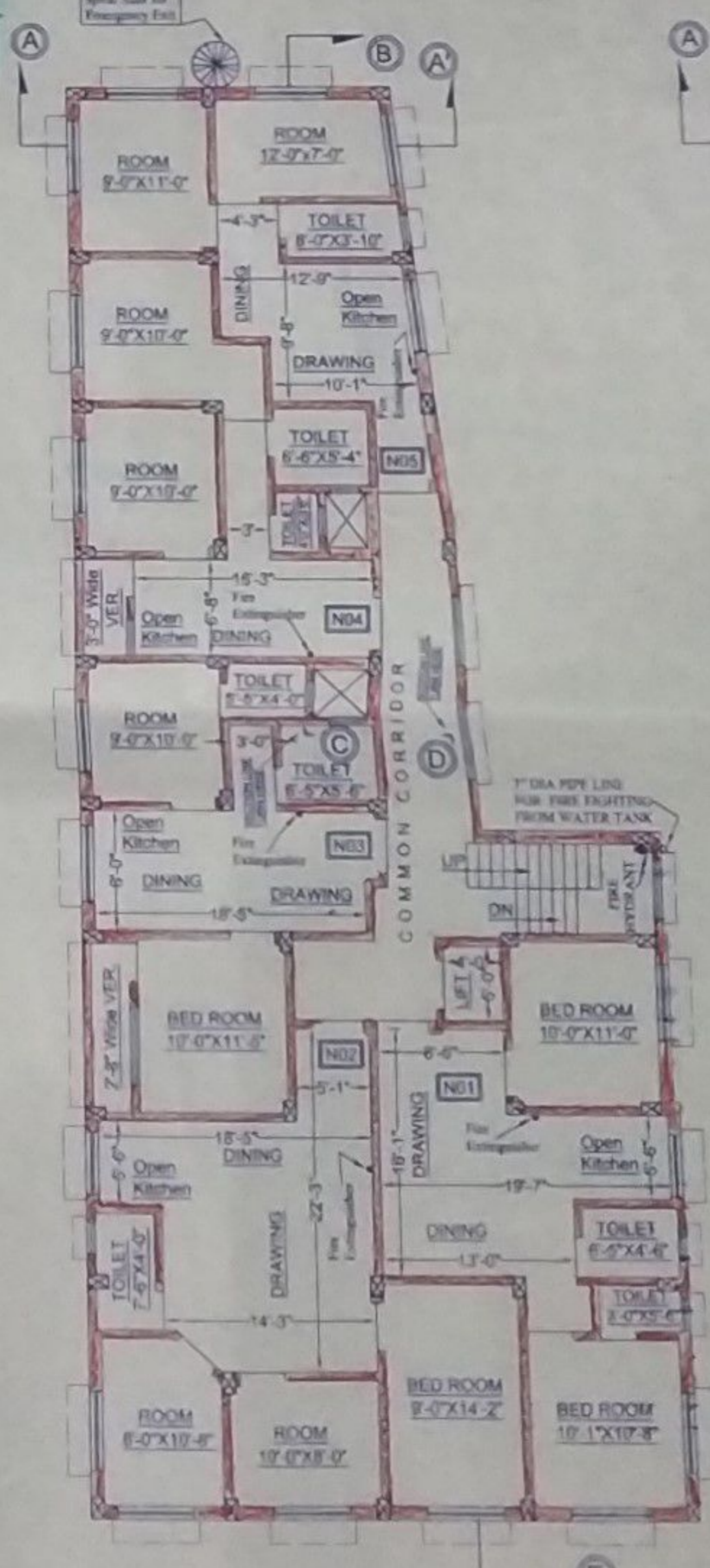
SANCTION GROUND FLOOR PLAN



ALTERATION GROUND FLOOR PLAN



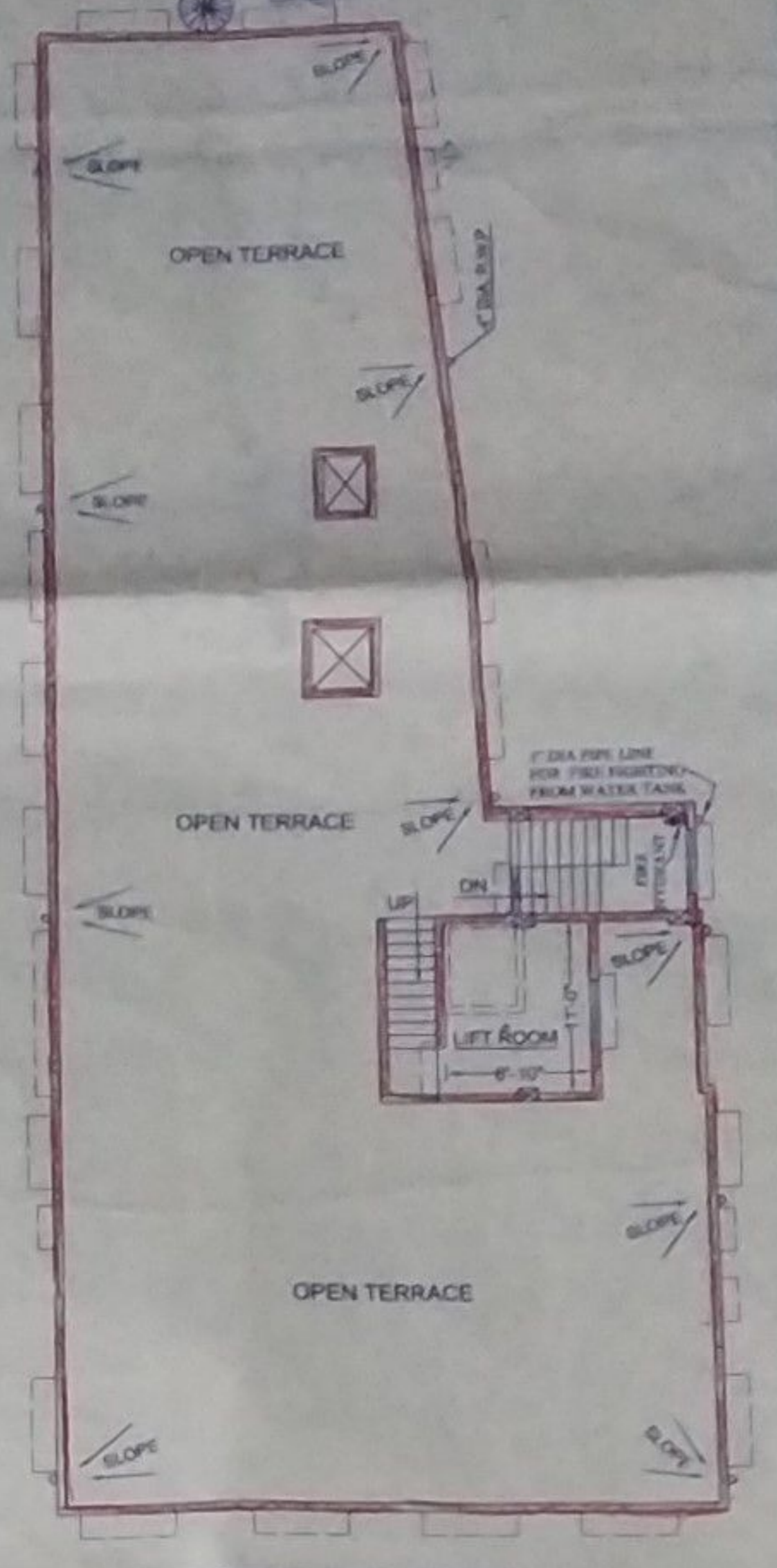
SANCTION TYPICAL FLOOR PLAN (1st, 2nd, 3rd & 4th)



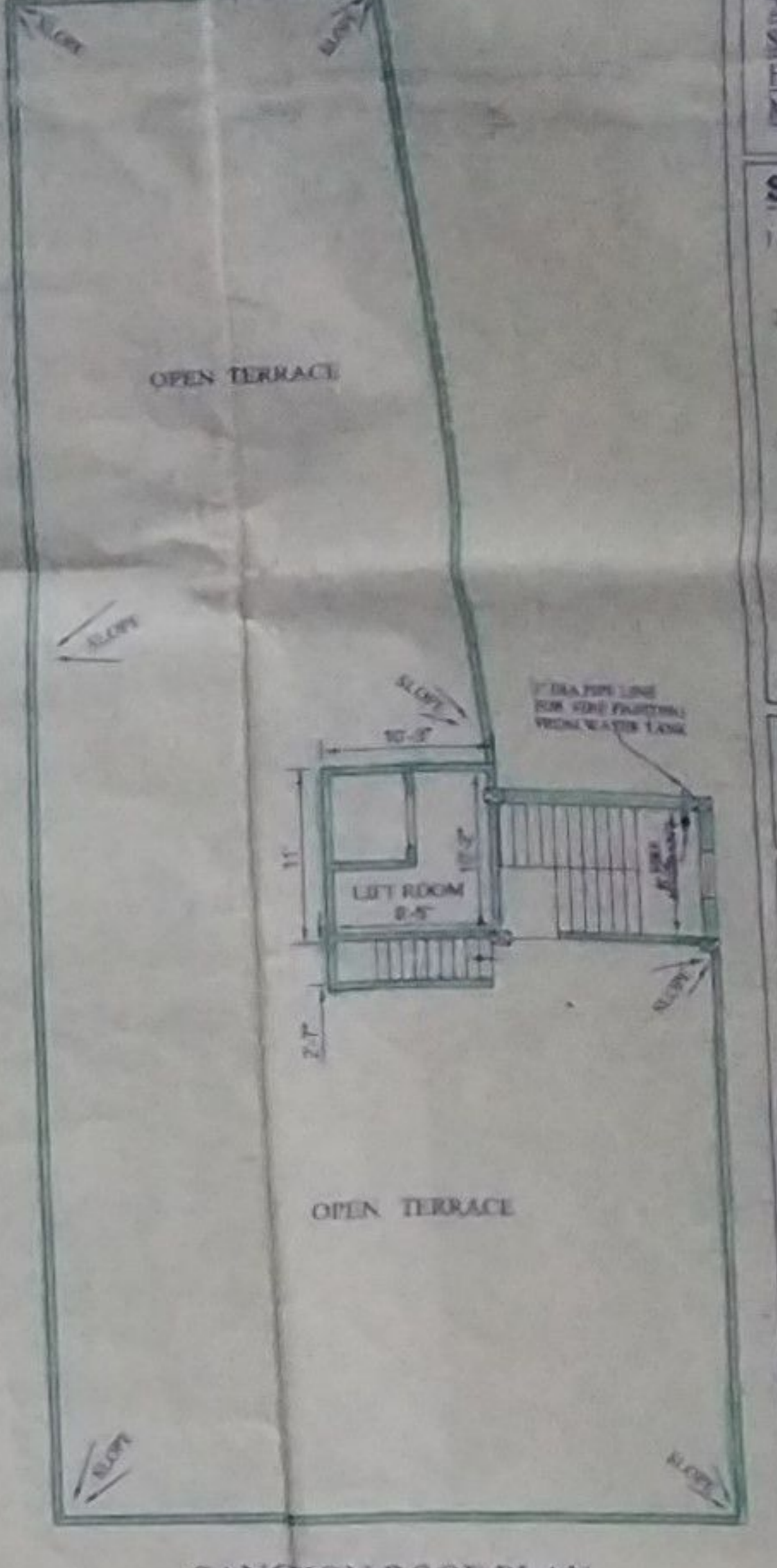
ALTERATION FIRST & FOURTH FLOOR PLAN



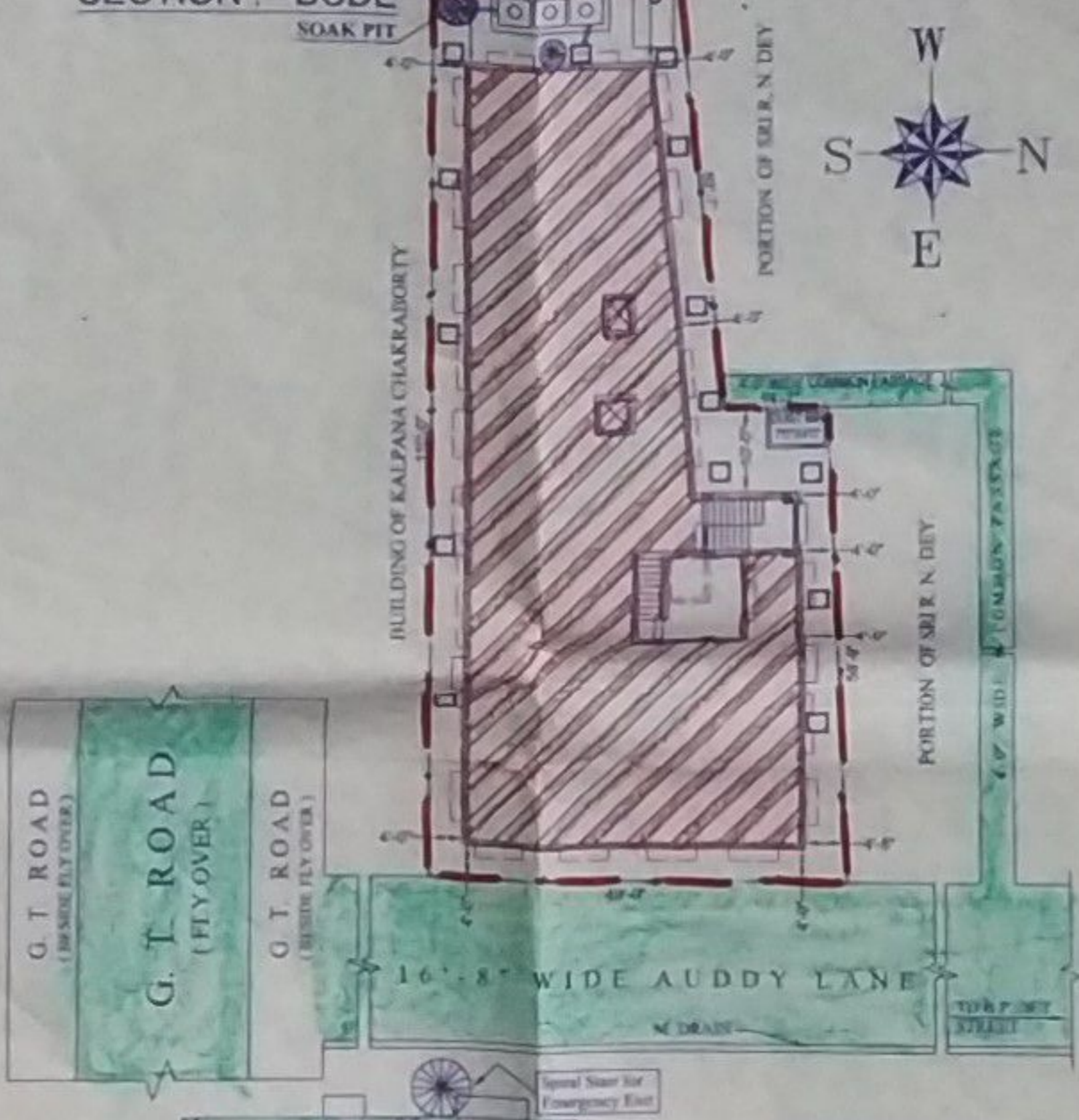
ALTERATION SECOND & THIRD FLOOR PLAN



ALTERATION ROOF PLAN



SANCTION ROOF PLAN



SITE PLAN SCALE - 1" = 16'-0"

SITE ADDRESS:-
 PROPOSED ALTERATION PLAN OF G+4 STORED BUILDING AT MUNICIPAL HOLDING NO. 37, AUDDY LANE IN E.S. DAG NO - 5116/1834, 5115 UNDER R.S. KHATTAN NO. 4913, L.R. DAG NO - 5302, 5300 L.R. KHATTAN NO. - 2008/27, 27825, 27826, 24448/1, 24473/1, 19377/1, 13174/1, 14911/1, 19208/1, MOUZA - SERAMPORE, P.L. NO. - 13, P.O. & P.S. - SERAMPORE, DIST - HOOGHLY, WARD NO. - 8 UNDER SERAMPORE MUNICIPALITY.

SPECIFICATION:-

- BRICK WORK:
 - 1) 10" & 12" work with 4:1 mortar.
 - 2) 1" & 2" work with 4:1 mortar.
- PLASTERING:
 - 1) 15 mm th. external wall - cement mortar (4:1).
 - 2) 15 mm th. internal wall - cement mortar (4:1).
 - 3) 15 mm th. ceiling & other conc. surfaces - cement mortar (4:1).
 - 4) 15 mm th. plaster on other conc. surfaces - cement mortar (4:1).
- CEMENT CONCRETE:
 - 1) In foundation & floor - 1:2:4 (With stone chips 1-1 1/2").
 - 2) In structural concrete work - 1:1.5:3 (With stone chips 5/8" size).
- REINFORCEMENT:
 - 1) Fe 415.
 - 2) Fe 250.
- ALL FINISHING & SANITARY MATERIALS SHOULD BE USED.
- DRAINAGE TO BE PROVIDED WITH SLOPE TIME, SURE & SURE (MIN. 1% CLASS, DUCTILE) (1:20).

NOTE:- ALL THE BASIC SPECIFICATION MENTION ABOVE ARE LIKELY TO BE MODIFIED IF NECESSARY AT THE TIME OF CONSTRUCTION.

NOTES:-
 ALL DIMENSION ARE IN FOOT & INCH SCALE - 1" = 8'-0" (EXCEPT WHERE MENTIONED)

MID	SIZE	NOTES	MWD	SIZE	NOTES
D1	3'-0" x 6'-0"	FRAMES - SALL WOOD	W1	6'-0" x 4'-0"	FRAMES - SALL WOOD
D2	3'-0" x 6'-0"	SHUTTER - PLY WOOD	W2	3'-0" x 3'-0"	SHUTTER Aluminium & GLASS
D3	2'-6" x 6'-0"		W3	2'-0" x 2'-0"	

AREA:-
 TOTAL LAND AREA - 098 Sabarangahe 'or' 05 KA. 14 CH. 39 SFT

SANCTION COV. AREA AT Gr. FLOOR (COMM.) = 893 Sq Ft. or 64.38 Sq M
 ALTERATION COV. AREA AT Gr. FLOOR (COMM.) = 618 Sq Ft. or 57.25 Sq M
 EXTRA CHARGEABLE COV. AREA AT Gr. FLOOR (COMM.) = NIL

SANCTION COV. AREA AT Gr. FLOOR (RESI.) = 2440 Sq Ft. or 226.68 Sq M
 ALTERATION COV. AREA AT Gr. FLOOR (RESI.) = 2517 Sq Ft. or 233.92 Sq M
 EXTRA CHARGEABLE COV. AREA AT Gr. FLOOR (RESI.) = 77 Sq Ft. or 7.24 Sq M

SANCTION COV. AREA AT 1st FLOOR (RESI.) = 3133 Sq Ft. or 291.06 Sq M
 ALTERATION COV. AREA AT 1st FLOOR (RESI.) = 3133 Sq Ft. or 291.06 Sq M
 EXTRA CHARGEABLE COV. AREA AT 1st FLOOR (RESI.) = NIL

SANCTION COV. AREA AT 2nd FLOOR (RESI.) = 3133 Sq Ft. or 291.06 Sq M
 ALTERATION COV. AREA AT 2nd FLOOR (RESI.) = 3133 Sq Ft. or 291.06 Sq M
 EXTRA CHARGEABLE COV. AREA AT 2nd FLOOR (RESI.) = NIL

SANCTION COV. AREA AT 3rd FLOOR (RESI.) = 3133 Sq Ft. or 291.06 Sq M
 ALTERATION COV. AREA AT 3rd FLOOR (RESI.) = 3133 Sq Ft. or 291.06 Sq M
 EXTRA CHARGEABLE COV. AREA AT 3rd FLOOR (RESI.) = NIL

SANCTION COV. AREA AT 4th FLOOR (RESI.) = 3133 Sq Ft. or 291.06 Sq M
 ALTERATION COV. AREA AT 4th FLOOR (RESI.) = 3133 Sq Ft. or 291.06 Sq M
 EXTRA CHARGEABLE COV. AREA AT 4th FLOOR (RESI.) = NIL

SANCTION COV. AREA AT STAIR & LIFT ROOM = 233 SFT or 21.64 Sq M
 ALTERATION COV. AREA AT STAIR & LIFT ROOM = 233 SFT or 21.64 Sq M
 EXTRA CHARGEABLE COV. AREA AT STAIR & LIFT ROOM = NIL

REFERENCE:-
 SANCTIONED WORK SHOWN IN GREEN
 ALTERATION WORK SHOWN IN RED
 BOUNDARY LINE SHOWN IN THUS
 DRAINAGE LINE SHOWN IN THUS
 ROADS ARE SHOWN IN THUS

SIGNATURE OF ENG.

S. S. S.
 S. S. S.
 2-18-2018

SIGNATURE OF OWNER

S. S. S.
 S. S. S.
 2-18-2018

FLOOR NO.	VALUE OF 'N'
FIRST FLOOR	N = G
SECOND FLOOR	N = 1
THIRD FLOOR	N = 2
FOURTH FLOOR	N = 3
FIFTH FLOOR	N = 4