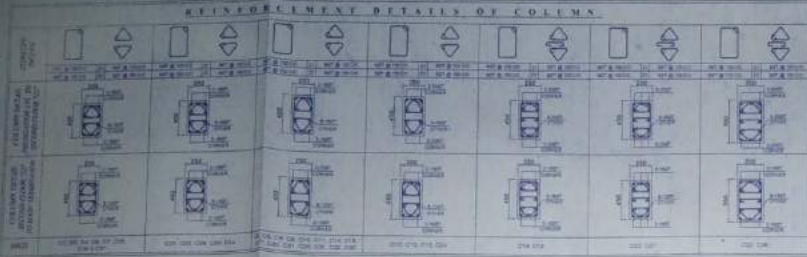
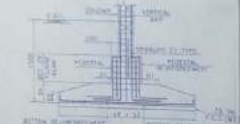
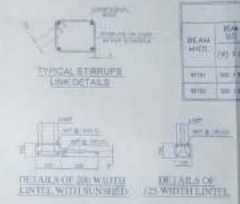
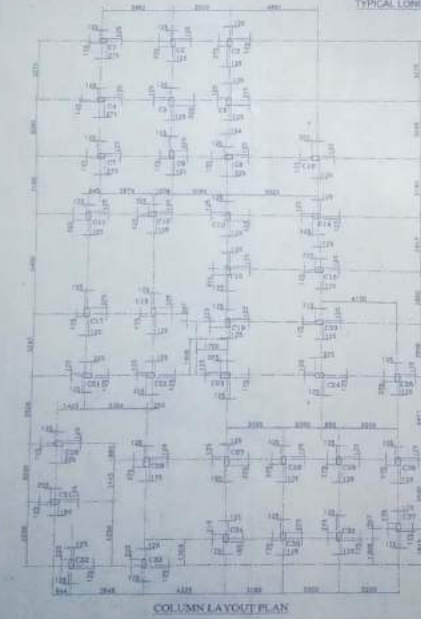
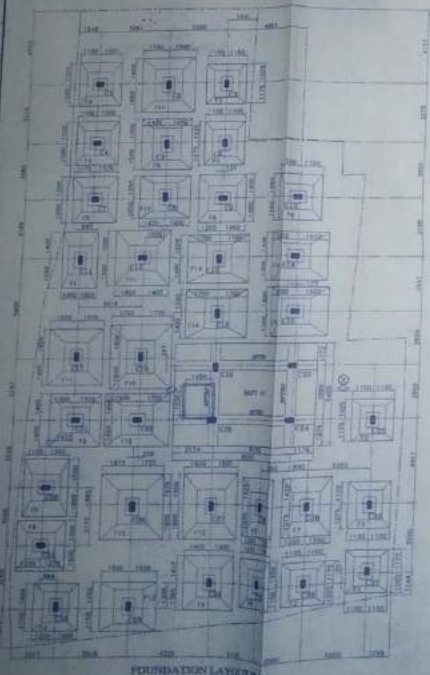
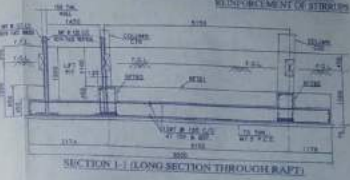
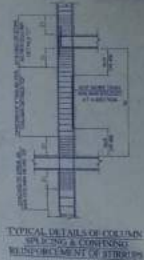


REINFORCEMENT DETAILS OF COLUMN



SCHEDULE OF FOUNDATION

MARKED	A, X, B	H	BASE DEPTH	REINFORCEMENT AT BOTTOM		REINFORCEMENT AT TOP	
				A X DIRECTION	A Y DIRECTION	A X DIRECTION	A Y DIRECTION
F1	2000 x 2000	400	200	11 @ 200	11 @ 200	11 @ 200	11 @ 200
F2	2000 x 2000	300	200	11 @ 200	11 @ 200	11 @ 200	11 @ 200
F3	2000 x 2000	200	200	11 @ 200	11 @ 200	11 @ 200	11 @ 200
F4	2000 x 2000	100	200	11 @ 200	11 @ 200	11 @ 200	11 @ 200
F5	2000 x 2000	500	200	11 @ 200	11 @ 200	11 @ 200	11 @ 200
F6	2000 x 2000	400	200	11 @ 200	11 @ 200	11 @ 200	11 @ 200
F7	2000 x 2000	300	200	11 @ 200	11 @ 200	11 @ 200	11 @ 200
F8	2000 x 2000	200	200	11 @ 200	11 @ 200	11 @ 200	11 @ 200
F9	2000 x 2000	100	200	11 @ 200	11 @ 200	11 @ 200	11 @ 200
F10	2000 x 2000	500	200	11 @ 200	11 @ 200	11 @ 200	11 @ 200
F11	2000 x 2000	400	200	11 @ 200	11 @ 200	11 @ 200	11 @ 200
F12	2000 x 2000	300	200	11 @ 200	11 @ 200	11 @ 200	11 @ 200
F13	2000 x 2000	200	200	11 @ 200	11 @ 200	11 @ 200	11 @ 200
F14	2000 x 2000	100	200	11 @ 200	11 @ 200	11 @ 200	11 @ 200
F15	2000 x 2000	500	200	11 @ 200	11 @ 200	11 @ 200	11 @ 200
F16	2000 x 2000	400	200	11 @ 200	11 @ 200	11 @ 200	11 @ 200
F17	2000 x 2000	300	200	11 @ 200	11 @ 200	11 @ 200	11 @ 200
F18	2000 x 2000	200	200	11 @ 200	11 @ 200	11 @ 200	11 @ 200
F19	2000 x 2000	100	200	11 @ 200	11 @ 200	11 @ 200	11 @ 200
F20	2000 x 2000	500	200	11 @ 200	11 @ 200	11 @ 200	11 @ 200



SCHEDULE OF RAFT - BEAM

BEAM NO.	SPAN	DEPTH	ALTHOUGH REINFORCEMENT		EXTRA REINFORCEMENT		STAIRS	SIDE FACE BAR
			BOTTOM	TOP	AT SPA	AT SUPP		
R1	10.00	1.00	11 @ 200	11 @ 200	11 @ 200	11 @ 200	11 @ 200	11 @ 200
R2	10.00	1.00	11 @ 200	11 @ 200	11 @ 200	11 @ 200	11 @ 200	11 @ 200

Project Title:  
STRUCTURAL DRAWING OF PROPOSED CH-IV STORED RESIDENTIAL BUILDING AT L.R. DAG NO-1597, 1598, 1599 & 1600, L.R. KHATAN NO-5385, 5778 & 6025, MOJZA-BALLY, J.L. NO-09, HOLDING NO-59/511, 59/52, MOHALA - BOKAL PARA, IN WARD NO-08 UNDER - HOOGLY - CHINSURAH MUNICIPALITY, P.S. CHINSURAH, DIST - HOOGHLY.

Signature of Owner >  
E. Saha (18-19)  
300 (FLAT)

Certificate of Structural Engineer  
Certifies that the structural drawing and design of both the foundation and substructure of the building has been made conforming to the IS Code, as per the rules and regulations made under the act and also conforming to the standards, codes and norms prescribed by the proposed structure as per the Bureau of Indian Standards and Indian Building Code of Practice and satisfies S.B. 10, 11, 12, and 13, and complies with all the provisions and shall be adhered to during the construction.

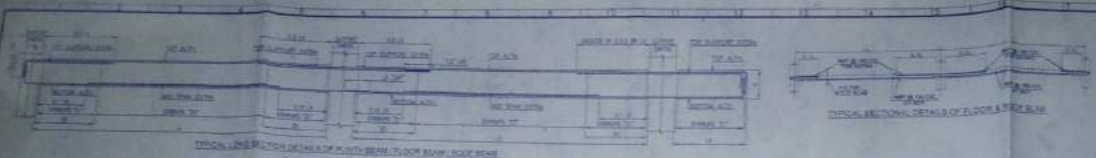
Signature of Structural Engineer  
S. Saha  
S. Saha  
S. Saha  
Chinsurah, Hooghly.

LEGEND  
 SLAB OPENING  
 POLE SUPPORTED FROM THIS LEVEL  
 COLUMN SUPPORTED FROM THIS LEVEL

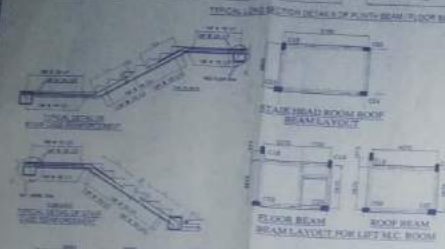
Revised No-00  
 Paper Size- A1  
 Sheet No- 1 of 2



LANGTHUEN  
Tham  
Maha Chulalongkrajavidyalaya

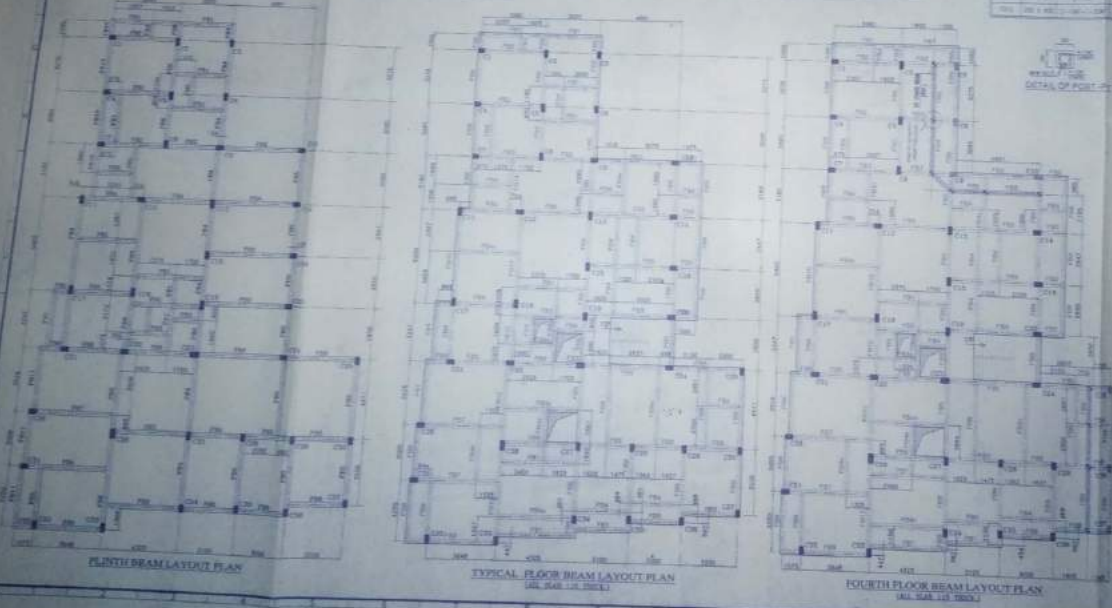


B/S (10-19)  
(E.P.)



BEAM NO.	SPAN	SECTION	REINFORCEMENT	REMARKS
101	2.10	100	2-10, 2-8	...
102	2.10	100	2-10, 2-8	...
103	2.10	100	2-10, 2-8	...
104	2.10	100	2-10, 2-8	...
105	2.10	100	2-10, 2-8	...
106	2.10	100	2-10, 2-8	...
107	2.10	100	2-10, 2-8	...
108	2.10	100	2-10, 2-8	...
109	2.10	100	2-10, 2-8	...
110	2.10	100	2-10, 2-8	...

BEAM NO.	SPAN	SECTION	REINFORCEMENT	REMARKS
111	2.10	100	2-10, 2-8	...
112	2.10	100	2-10, 2-8	...
113	2.10	100	2-10, 2-8	...
114	2.10	100	2-10, 2-8	...
115	2.10	100	2-10, 2-8	...
116	2.10	100	2-10, 2-8	...
117	2.10	100	2-10, 2-8	...
118	2.10	100	2-10, 2-8	...
119	2.10	100	2-10, 2-8	...
120	2.10	100	2-10, 2-8	...



**Project Title:**  
STRUCTURAL DRAWING OF PROPOSED CHY STORED RESIDENTIAL BUILDING AT L.R. DAO NO. 1587, 1588, 1589 & 1590, U/R KHITWANG, 1325, 8TH & 9TH, MOULANA BALLY, J.L. NO. 05 HOLDING NO. 889/1, 890/1, MOULANA BALLY, IN WARD NO. 16, UNDER / HOOGHLY / CHINDURAH MUNICIPALITY, P.S. CHINDURAH, DIST. HOOGHLY.

**Signature of Designer:**  
[Signature]

**Certificate of Structural Engineer:**  
I certify that the structure is a true and correct design in accordance with the rules and regulations of the Government of West Bengal and the State of Jharkhand and that the same has been approved by the Government of West Bengal and the State of Jharkhand.

**Signature of Structural Engineer:**  
[Signature]

**LEGEND:**  
 [Symbol] BEAMS  
 [Symbol] PLYTH BEAM  
 [Symbol] COLUMN  
 [Symbol] WALL

Revision No: 00  
Paper Size: A1  
Scale: 1/4" = 1'-0"  
Sheet No. 2 of 2

19  
S&S  
Mangy-Chintara Municipality

SANCTIONED  
19  
Mangy-Chintara Municipality

