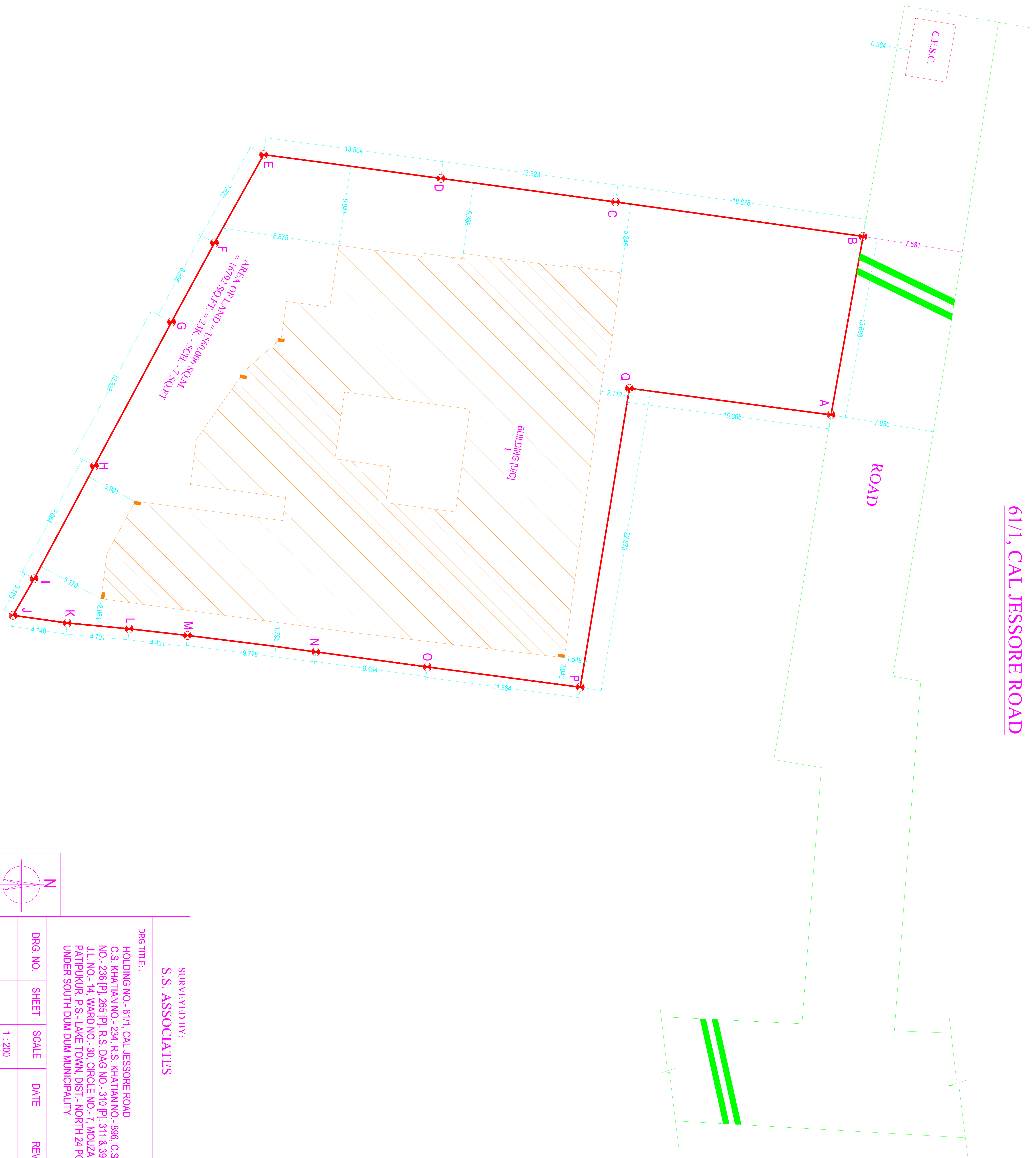


# 61/1, CAL JESSORE ROAD



AREA OF LAND = 1560.006 SQ.M  
 = 16792 SQ.FT. = 23K - 5CH - 7 SQ.FT.

### NOTE:

1. ALL MEASUREMENTS ARE IN METRES
2. TOTAL AREA OF LAND - 1560.006 SQ.M.  
 = 16792 SQ.FT.  
 = 23K - 5CH - 7 SQ.FT.
3. PLOT DETAILS - HOLDING NO.- 61/1, CAL JESSORE ROAD  
 C.S. KHATTAN NO.- 234, R.S. KHATTAN NO.- 896, C.S. DAG  
 NO.- 236 [P], 266 [P], R.S. DAG NO.- 310 [P], 311 & 399 [P],  
 J.L. NO.- 14, WARD NO.- 30, CIRCLE NO.- 7, MOUZA -  
 PATIPUKUR, P.S.- LAKE TOWN, DIST.- NORTH 24 PGS.  
 UNDER SOUTH DUM DUM MUNICIPALITY

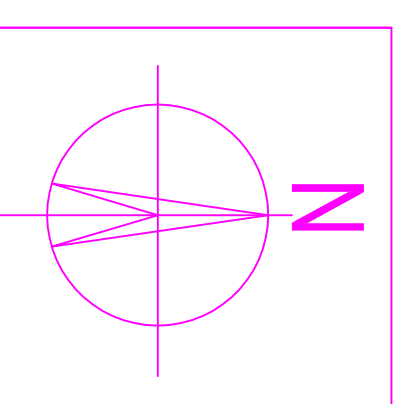
LEGEND	
SYMBOL	DESCRIPTION
	BOUNDARY WALL
	BOUNDARY POINT

### COORDINATE LIST OF BOUNDARY

BOUNDARY POINTS	EASTING [M]	NORTHING [M]
A	90.174	446.607
B	276.690	449.022
C	274.094	430.345
D	272.313	417.120
E	270.518	403.736
F	277.177	400.028
G	283.157	396.780
H	294.024	390.957
I	302.551	386.401
J	305.313	384.802
K	305.893	388.897
L	306.334	393.584
M	306.832	397.986
N	308.076	407.684
O	309.213	416.101
P	310.744	427.664
Q	288.172	431.375

### LINEAR MEASUREMENTS OF BOUNDARY POINTS

POINTS	DISTANCE IN METRE	POINTS	DISTANCE IN METRE
A - B	13.698	L - M	4.431
B - C	18.878	M - N	9.778
C - D	13.323	N - O	8.494
D - E	13.504	O - P	11.664
E - F	7.623	P - Q	22.875
F - G	6.805	Q - A	15.365
G - H	12.328	A - C	22.870
H - I	9.664	C - J	55.216
I - J	3.195	E - P	46.804
J - K	4.140	M - F	22.919
K - L	4.701		



SURVEYED BY: <b>S.S. ASSOCIATES</b>				
DRG TITLE: HOLDING NO.- 61/1, CAL JESSORE ROAD C.S. KHATTAN NO.- 234, R.S. KHATTAN NO.- 896, C.S. DAG NO.- 236 [P], 266 [P], R.S. DAG NO.- 310 [P], 311 & 399 [P], J.L. NO.- 14, WARD NO.- 30, CIRCLE NO.- 7, MOUZA - PATIPUKUR, P.S.- LAKE TOWN, DIST.- NORTH 24 PGS. UNDER SOUTH DUM DUM MUNICIPALITY				
DRG. NO.	SHEET	SCALE	DATE	REV.
		1 : 200		