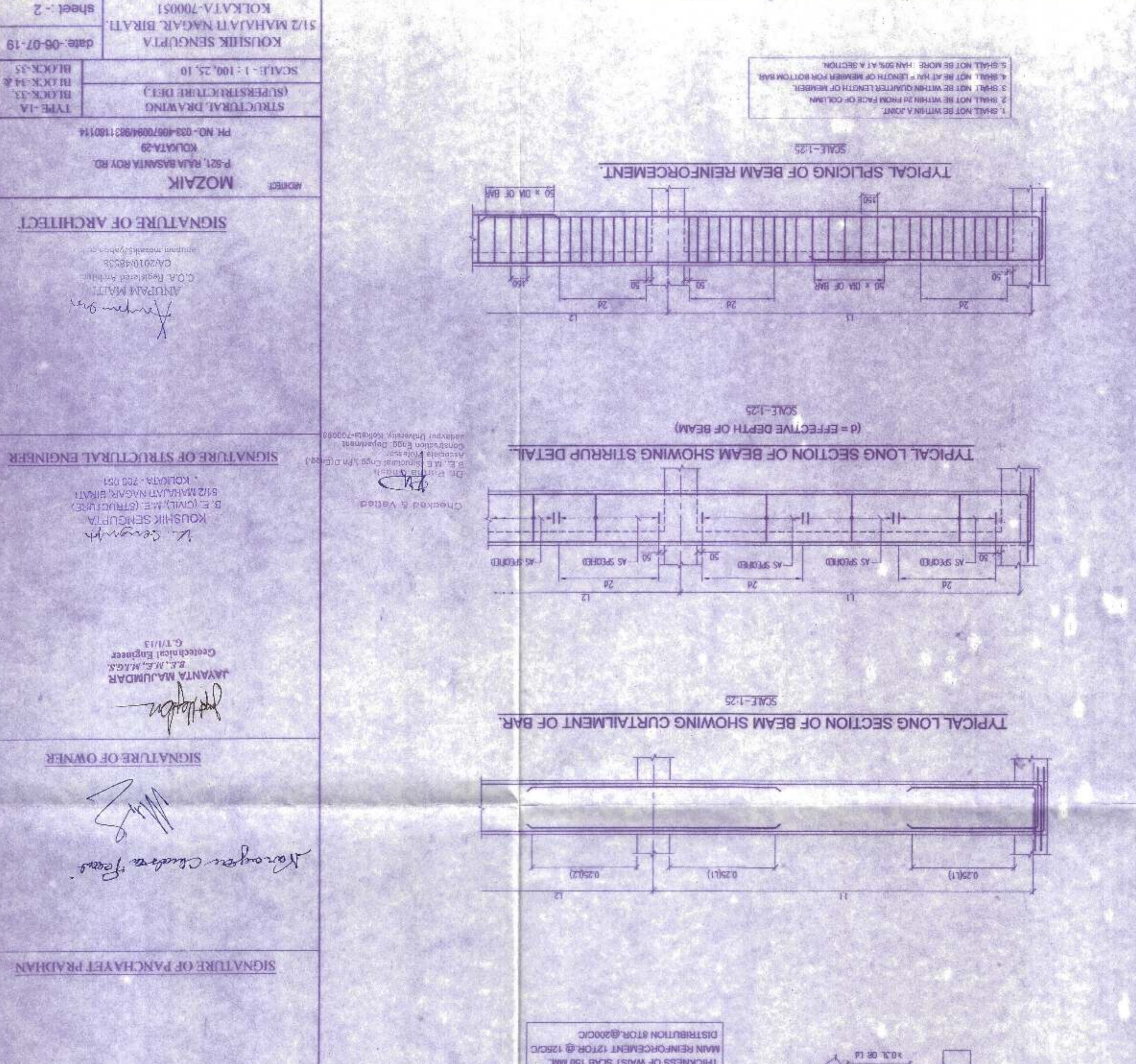
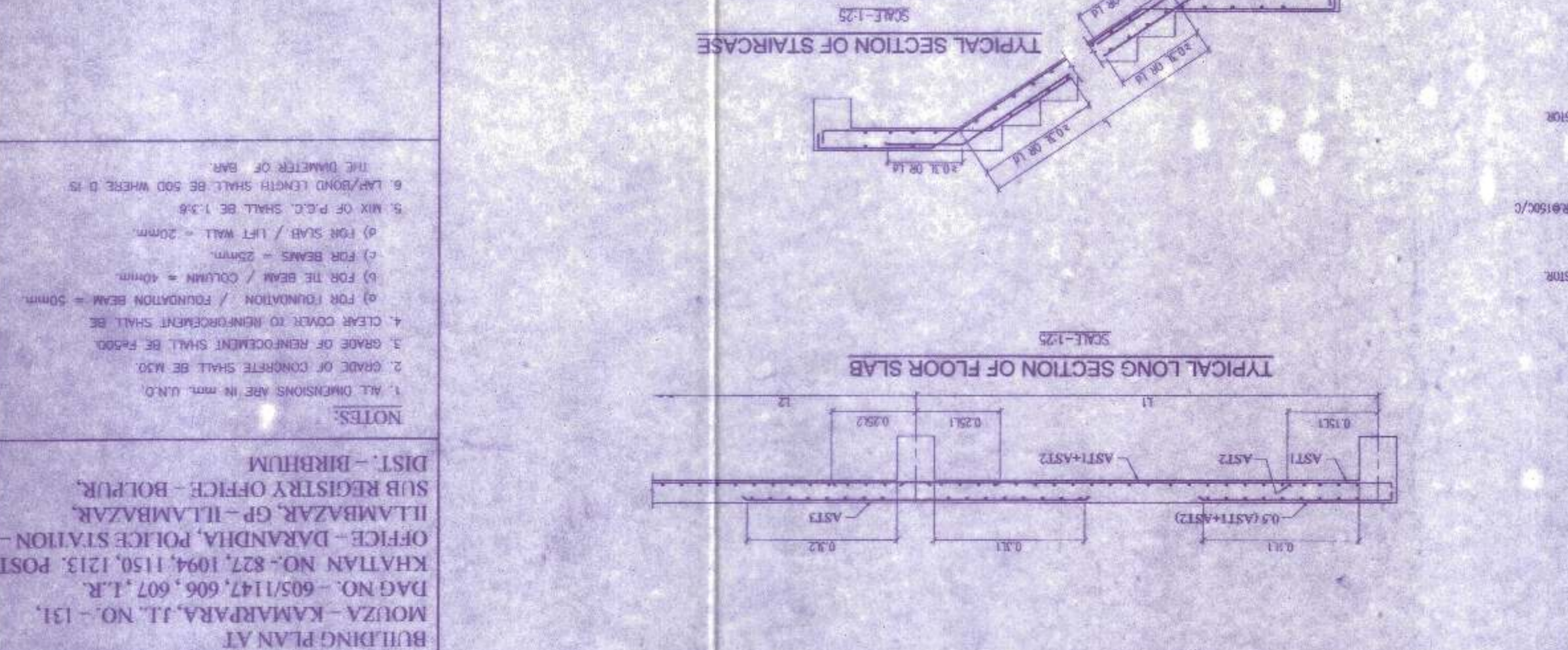
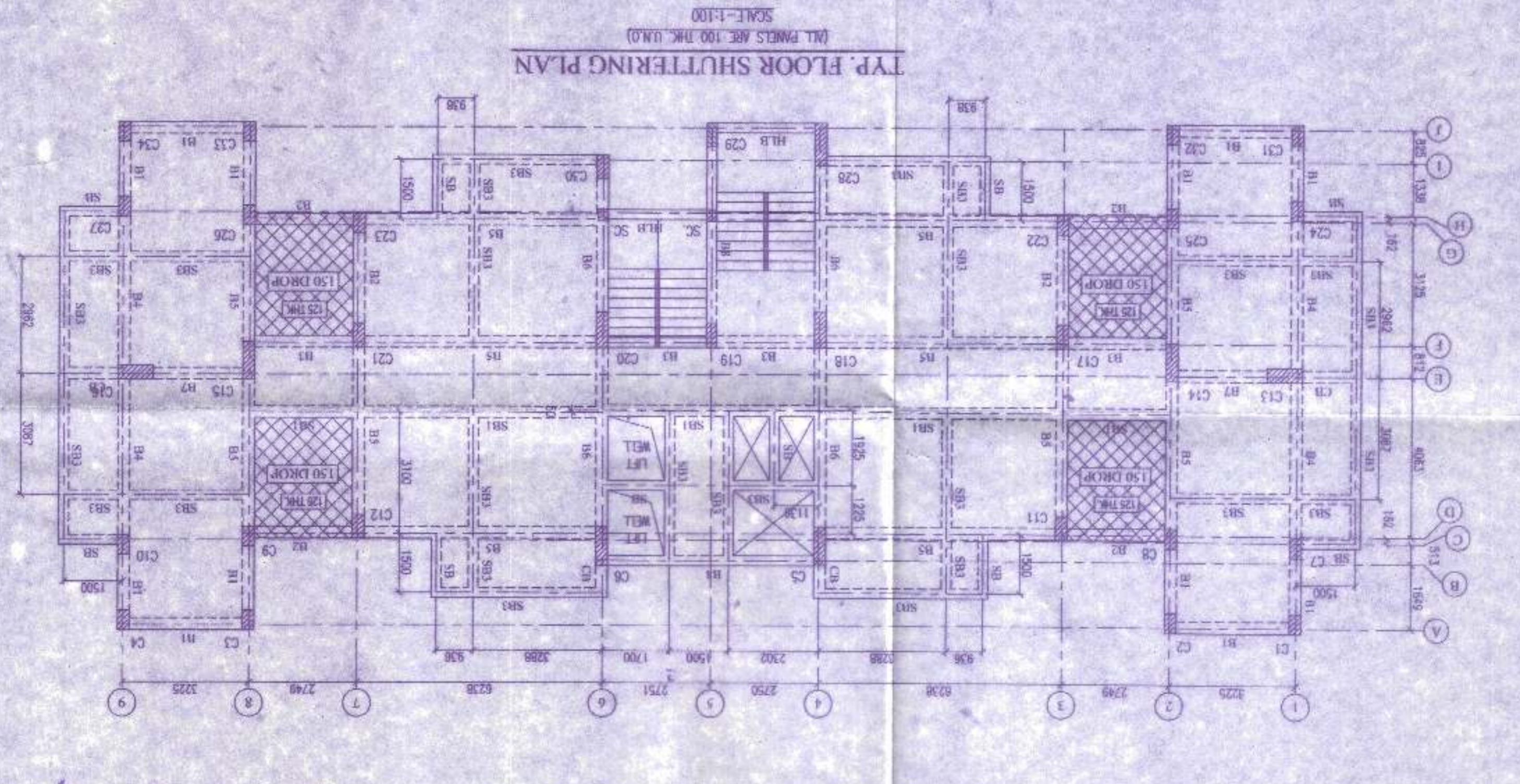
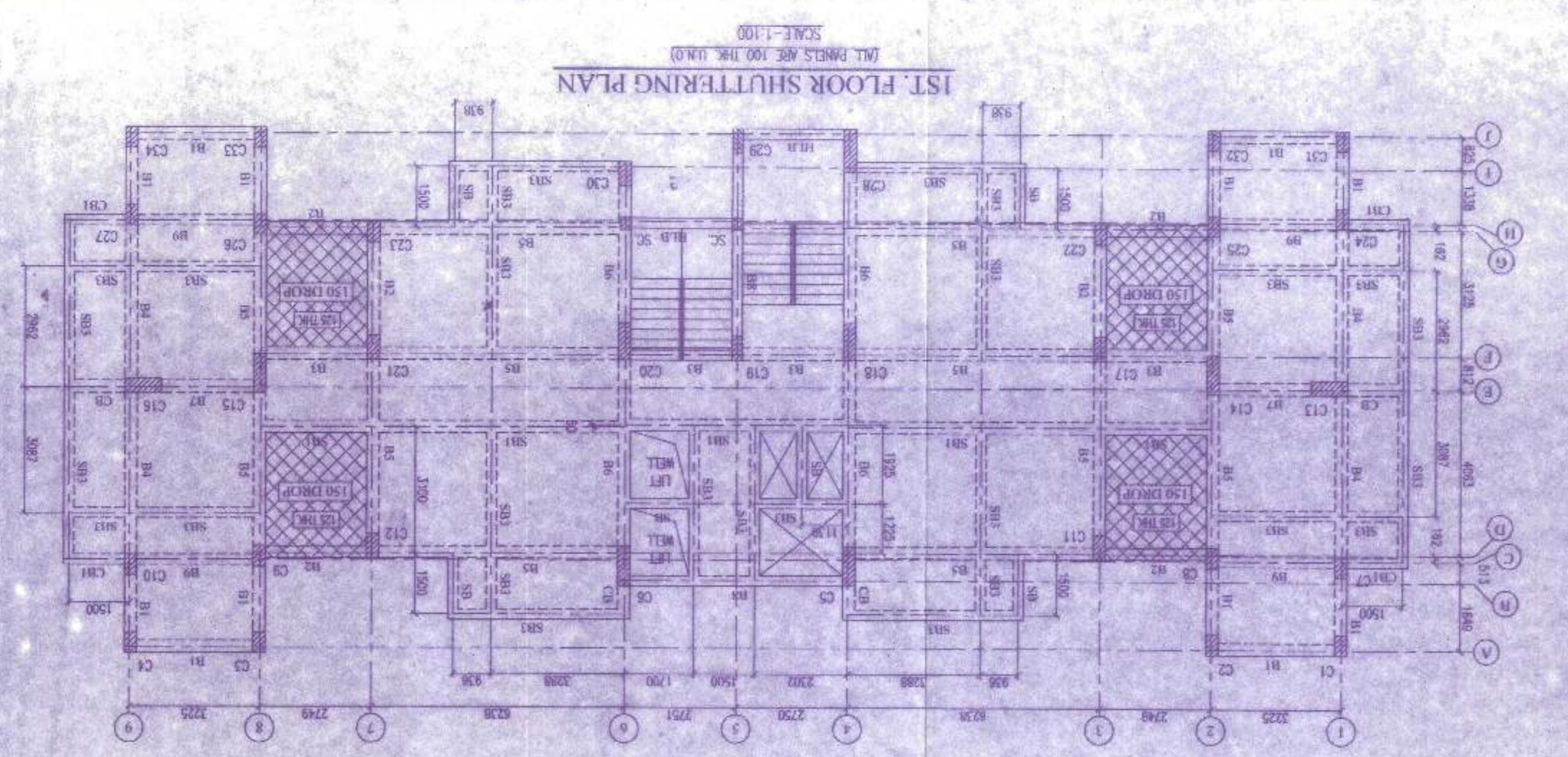
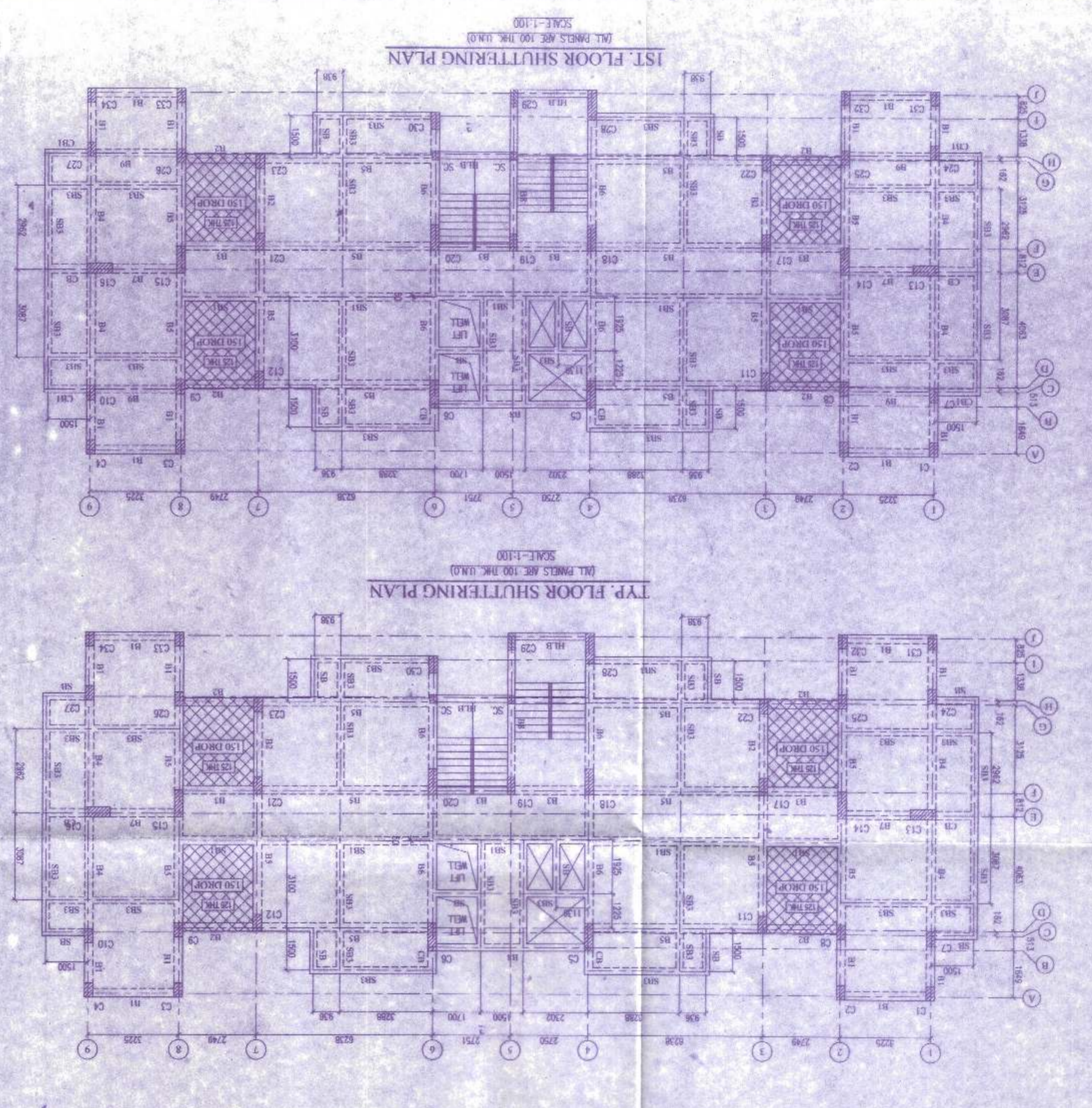


BEAM	ID	AT SUPPORT		AT SPAN		SCHEDULE OF BEAMS	
		TOP	BOTTOM	TOP	BOTTOM	TOP	BOTTOM
101	300 X 300	3-10T	3-10T	3-10T	3-10T	2L-8T@100C/C	2L-8T@175C/C
102	300 X 300	3-10T	3-10T	3-10T	3-10T	2L-8T@100C/C	2L-8T@175C/C
103	300 X 300	3-10T	3-10T	3-10T	3-10T	2L-8T@100C/C	2L-8T@175C/C
104	300 X 300	3-10T	3-10T	3-10T	3-10T	2L-8T@100C/C	2L-8T@175C/C
105	300 X 300	3-10T	3-10T	3-10T	3-10T	2L-8T@100C/C	2L-8T@175C/C
106	300 X 300	3-10T	3-10T	3-10T	3-10T	2L-8T@100C/C	2L-8T@175C/C
107	300 X 300	3-10T	3-10T	3-10T	3-10T	2L-8T@100C/C	2L-8T@175C/C
108	300 X 300	3-10T	3-10T	3-10T	3-10T	2L-8T@100C/C	2L-8T@175C/C
109	300 X 300	3-10T	3-10T	3-10T	3-10T	2L-8T@100C/C	2L-8T@175C/C
110	300 X 300	3-10T	3-10T	3-10T	3-10T	2L-8T@100C/C	2L-8T@175C/C

SCHEDULE OF SLABS

SLAB	SHORT BAR	LENGTH TOP OVER SUPPORT	LENGTH BOTTOM AT SUPPORT	THICKNESS	REINFORCEMENT
101	3-10T	3-10T	3-10T	150	810R@150C/C
102	3-10T	3-10T	3-10T	150	810R@150C/C
103	3-10T	3-10T	3-10T	150	810R@150C/C
104	3-10T	3-10T	3-10T	150	810R@150C/C
105	3-10T	3-10T	3-10T	150	810R@150C/C
106	3-10T	3-10T	3-10T	150	810R@150C/C
107	3-10T	3-10T	3-10T	150	810R@150C/C
108	3-10T	3-10T	3-10T	150	810R@150C/C
109	3-10T	3-10T	3-10T	150	810R@150C/C
110	3-10T	3-10T	3-10T	150	810R@150C/C

PROVIDE DISTRIBUTION BARS @ 200 C/C WHERE NECESSARY



PROJECT: PROPOSED G+VII STORED RESIDENTIAL BUILDING PLAN AT MOUZA - KAMARPARA, JT. NO. - 131, KHATTAN NO. - 827, 1094, 1150, 1213, POST - DARANDHA, POLICE STATION - ILTAMBAZAR, GP - ILTAMBAZAR, SUB REGISTRY OFFICE - BOLPUR, DIST. - BIRBHUM.

NOTES:

- ALL DIMENSIONS ARE IN MM U.N.O.
- GRADE OF CONCRETE SHALL BE M30.
- GRADE OF REINFORCEMENT SHALL BE F400.
- CLEAR COVER TO REINFORCEMENT SHALL BE:
- FOR FOUNDATION / FOUNDATION BEAM = 50mm
- FOR THE BEAM / COLUMN = 40mm
- FOR BEAMS = 25mm
- FOR SLAB / LIFT WALL = 20mm
- MIX OF P.C.C. SHALL BE 1:3:6
- LAP/BOND LENGTH SHALL BE 500 WHERE D IS THE DIAMETER OF BAR.

SIGNATURE OF OWNER: *[Signature]*

SIGNATURE OF ARCHITECT: *[Signature]*
MOZAIK
P-521, RAJA BASANTA ROY RD, KOLKATA-29
PH. NO. 033-4067009/0331100114

SIGNATURE OF STRUCTURAL ENGINEER: *[Signature]*
Checked & Validated
Dr. B. E. Koushik Sengupta
B. E. (Civil), M. E. (Structural),
B. I. T. MUMUKSHU NAGAR, BIRBHUM,
KOLKATA - 720 191
Associate Professor,
Department of Civil Engineering,
Jadavpur University, Kolkata-700032

SIGNATURE OF PANCHAYET PRADESH: *[Signature]*
JAYANTA MAJUMDAR
P.E., M.E., M.A.C.E.
Geotechnical Engineer
G.T/1/13

STRUCTURAL DRAWING (SUPERSTRUCTURE DET.)
TYPE - 1A
BLOCK - 13
BLOCK - 35
date - 06-07-19
sheet - 2