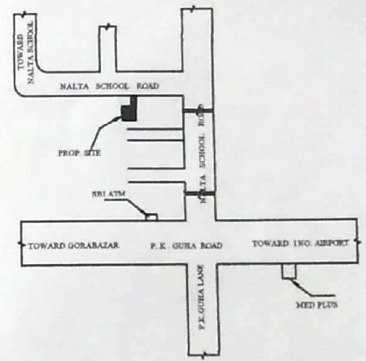
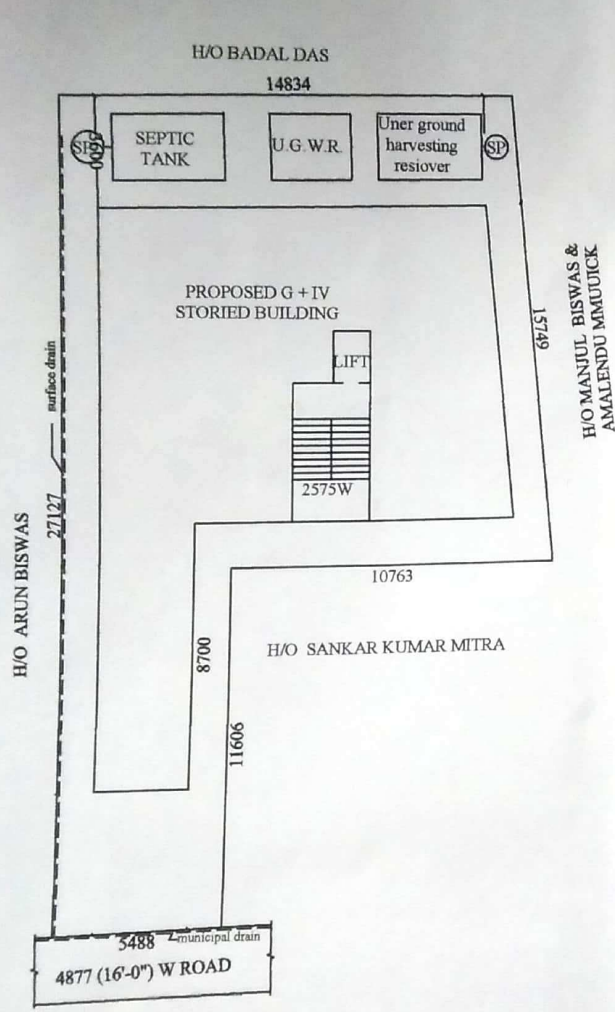


SITE PLAN SHOWING THE LAND AREA SITUATED AT HOLDING NO. - 6 9/2 ,
 NALTA SCHOOL ROAD, KOLKATA -700028 , , MOUZA SULTANPUR, J.L. NO.
 -10 , R.S. 89, TOUZI NO. 172, R.S DAG NO. 493, R.S KHATAIN NO. 122, WARD
 NO. -7 , P.S. - DUM DUM , UNDER DUM DUM MUNICIPALITY



Saraj K. Chowdhury
SAROJ KUMAR CHOWDHURY
 Civil Engineer (Dip.)
 PWD/241/B/2023...2024
 Dum Dum Municipality

SIG. OF ENGINEER

SIG. OF THE DEVELOPER