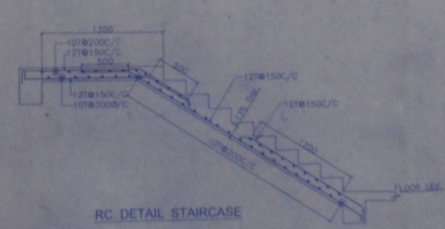


BEAM SCHEDULE							
BEAM MKD.	BEAM SIZE	SUPPORT REINFORCEMENT			SPAN REINFORCEMENT		
		TOP	BOTTOM	STIRRUPS	TOP	BOTTOM	STIRRUPS
TRX-1,2	250X500	3-25T 3-16T	3-25T	8T@150/C	3-25T	3-25T	8T@200/C
TRX-3	250X400	3-16T	3-20T	8T@150/C	3-16T	3-20T	8T@200/C
TRX-4	250X500	3-25T 3-16T	3-25T	10T@150/C	3-20T	3-25T	8T@200/C
TRX-5,6,7, 9,12,14	250X500	3-25T 3-16T	3-20T	8T@150/C	3-25T	3-25T	8T@200/C
TRX-8,33	250X400	3-16T	3-20T	8T@150/C	3-16T	3-20T	8T@200/C
TRX-10,11	250X400	3-16T	3-16T	8T@150/C	3-16T	3-16T	8T@200/C
TRX-13	250X500	3-25T 3-16T	3-20T	8T@150/C	3-20T	3-20T	8T@200/C
TRX-15,16	250X400	3-16T	3-16T	8T@150/C	3-16T	3-16T	8T@200/C
TRX-17	250X500	3-25T 3-16T	3-20T	8T@150/C	3-25T 3-16T	3-20T	8T@200/C
TRX-18,23, 25,36	250X500	3-25T 3-16T	3-20T	8T@150/C	3-25T 3-16T	3-20T	8T@200/C
TRX-19	250X400	3-16T	3-16T	8T@150/C	3-16T	3-16T	8T@200/C
TRX-20	250X500	3-25T 3-16T	3-20T	8T@150/C	3-20T	3-20T	8T@200/C
TRX-22	250X500	3-25T 3-16T	3-20T	8T@150/C	3-25T 3-16T	3-20T	8T@200/C
TRX-27	250X500	3-25T 3-16T	3-20T	8T@150/C	3-20T	3-20T	8T@200/C
TRX-28	250X500	3-16T	3-20T	8T@150/C	3-16T	3-20T	8T@200/C
TRX-29,30, 32,36,38	250X500	3-25T 3-16T	3-20T	8T@150/C	3-25T 3-16T	3-20T	8T@200/C
TRX-31	250X500	3-16T	3-20T	8T@150/C	3-16T	3-20T	8T@200/C
TRX-35	250X500	3-25T 3-16T	3-20T	8T@150/C	3-25T 3-16T	3-20T	8T@200/C

BEAM SCHEDULE							
BEAM MKD.	BEAM SIZE	SUPPORT REINFORCEMENT			SPAN REINFORCEMENT		
		TOP	BOTTOM	STIRRUPS	TOP	BOTTOM	STIRRUPS
TRX-1,2 15,32,35, 35,38,42,37, 42,47,49,51	250X500	3-25T+ 3-16T	3-20T	8T@150/C	3-20T	3-20T	8T@200/C
TRX-3,5,6, 14,17,19, 24,25,46, 44,45,41,36	250X400	3-16T	3-16T	8T@150/C	3-16T	3-20T	8T@200/C
TRX-4,8,9, 17,18,23,25, 38	250X500	3-25T+ 3-16T	3-20T	8T@150/C	3-20T	3-20T	8T@200/C
TRX-15,23, 25,34,45, 43A,48	250X500	3-25T 3-16T	3-20T	10T@150/C	3-25T	3-20T	8T@200/C
TRX-13	250X500	3-20T	3-20T	8T@150/C	3-20T	3-20T	8T@200/C
TRX-29	250X500	3-16T	3-16T	8T@150/C	3-16T	3-16T	8T@200/C
TRX-36,27, 28,29,30	250X500	3-20T	3-20T	8T@150/C	3-20T	3-20T	8T@200/C
TRX-18,31, 32	250X500	3-16T	3-20T	8T@150/C	3-16T	3-20T+ 3-16T	8T@200/C
TRX-52,54, 62	250X500	3-25T 3-16T	3-20T	10T@150/C	3-25T	3-20T	8T@200/C
TRX-55,56	250X500	3-25T 3-16T	3-20T	10T@150/C	3-20T	3-25T	8T@200/C
TRX-53,58, 68	250X500	3-25T+ 3-16T	3-20T	8T@150/C	3-25T	3-20T	8T@200/C
TRX-57	250X500	3-16T	3-20T	8T@150/C	3-16T	3-20T	8T@200/C
TRX-61	250X500	3-16T	3-20T	8T@150/C	3-16T	3-20T+ 3-16T	8T@200/C
TRX-59	250X400	3-16T	3-20T	8T@150/C	3-16T	3-20T+ 3-16T	8T@200/C

SLAB SCHEDULE				
SLAB MKD.	SHORT SPAN		LONG SPAN	
	SUPPORT	TOP/MID SPAN/BOTTOM	SUPPORT	TOP/MID SPAN/BOTTOM
100	8T @175/C	8T @300/C	8T @175/C	8T @300/C
115	8T @150/C	8T @300/C	8T @150/C	8T @300/C
125	8T @150/C	8T @175/C	8T @150/C	8T @175/C
130	10T @150/C	10T @175/C	10T @150/C	10T @175/C



PROJECT  
 REVISED PLAN OF G+3 STORED RESIDENTIAL BUILDING AT MOUZA - SHYAMPUR, J.LNO-46, TQ:ZI NO. - 357, COMPRIED IN R.S. DAG NO 825 521 8416 APPERTAINING TO R.S. KHATIAN NO 101, CORRESPONDING TO L.R. DAG NO. 1148,1148,1144 UNDER L.R. KHATIAN NO-647, 1990, 1049,1198,596 AT PRESENT LYING WITHIN THE LIMITS OF THE MAHESHITALA MUNICIPALITY, WARD NO. 35, BEING MUNICIPAL HOLDING NO. P2 - 12ANEW B.B.T. ROAD RIGHT SIDE TOWARDS KOLKATA, P.S. - MAHESHITALA

TITLE  
 GA. OF TYPICAL FLOOR/BEAM SCHEDULE & SLAB SCHEDULE

NOTES  
 1. ALL DIMENSIONS ARE IN METERS UNLESS OTHERWISE SPECIFIED.  
 2. GRADE OF CONCRETE: M20  
 3. GRADE OF STEEL: FE415

ALL DIMENSIONS ARE UNLESS OTHERWISE SPECIFIED.  
 1. ALL DIMENSIONS ARE IN METERS UNLESS OTHERWISE SPECIFIED.  
 2. GRADE OF CONCRETE: M20  
 3. GRADE OF STEEL: FE415

DAUGHTER WORK PROJECTS PVT. LTD.  
 RAJESH KUMAR  
 Director

SIGNATURE OF OWNER & SEAL

ARCHITECT'S CERTIFICATE  
 I BE TO CERTIFY THAT THE BUILDING IS AS PER THE PROVISION OF NATIONAL BUILDING REGULATIONS AS AMENDED FROM TIME TO TIME THE SITE CONDITION INCLUDING THE NEIGHBOURING ALL BUILDING ROAD CONFORM WITH THE PLAN AND THE SITE IS SOUNDABLE AND MEET A STATE OF FILLED UP THE

DEBAPROSH SAHU  
 Architect & Interior Designer  
 ANANDA, TOL. ROAD, SAHUBAGAN, KOLKATA, INDIA  
 Regn. No. CA/09/12368

DEBAPROSH SAHU  
 REGN. NO. CA/09/12368  
 NAME & SIGNATURE OF ARCHITECT & SEAL

STRUCTURAL ENGINEER'S CERTIFICATE  
 THE STRUCTURE DESIGN AND CONSTRUCTION OF THIS PROJECT IS IN ACCORDANCE WITH THE PROVISIONS OF THE NATIONAL BUILDING REGULATIONS AS AMENDED FROM TIME TO TIME INCLUDING ALL POSSIBLE LOADS INCLUDING THE SEISMIC LOAD AS PER THE NATIONAL BUILDING CODE OF INDIA AND CERTIFIED THAT IT IS SAFE AND STABLE IN ALL RESPECTS.

BIBEK BIKASH MULLICK  
 E.S.E. - 1/75  
 KOLKATA REGISTERED ENGINEER

BIBEK BIKASH MULLICK  
 REGN. NO. CA/09/12368  
 NAME & SIGNATURE OF STRUCTURAL ENGINEER & SEAL

STRUCTURAL CONSULTANT  
 P. M. CONSULTANTS  
 25-A, DR. SARAT BANERJEE ROAD, KOLKATA-700029  
 PHONE - 8820481784  
 e-mail - pmb@pmbconsultants.com

15/08/2024

THE UNDERSIGNED IS A MEMBER OF THE INDIAN INSTITUTE OF STRUCTURAL ENGINEERS (I.I.S.E.) AND IS REGISTERED AS A MEMBER OF THE INDIAN INSTITUTE OF STRUCTURAL ENGINEERS (I.I.S.E.) AND IS REGISTERED AS A MEMBER OF THE INDIAN INSTITUTE OF STRUCTURAL ENGINEERS (I.I.S.E.)

GA. AT TYPICAL FLOOR (1st TO 3rd) PLAN