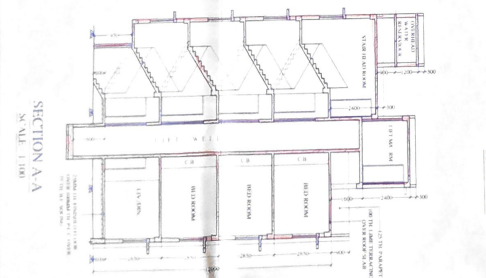
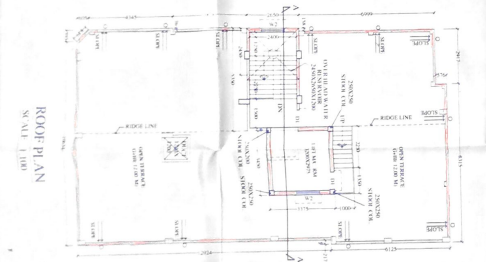
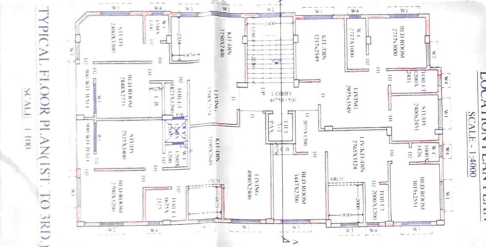
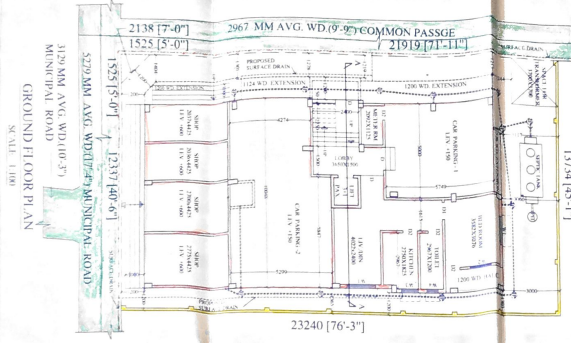
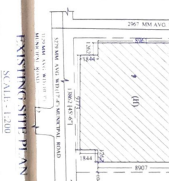
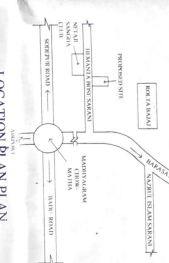
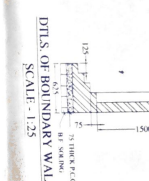
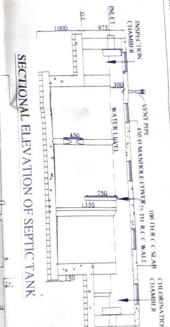
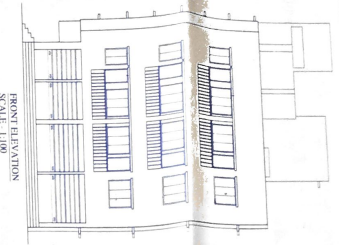


PREPARED AND ASSURED BY REGISTERED ARCHITECTS, BUILDING ENGINEERS, ELECTRICAL AND OTHERS AT CROSSING ROAD, CHENNAI UNIVERSITY CAMPUS, 11, NO. 4, K. K. ROAD, NO. 80, CROSSING ROAD, CHENNAI UNIVERSITY CAMPUS, CHENNAI-600 092. NORTH ZONE REGIONAL OFFICE, CHENNAI UNIVERSITY CAMPUS, CHENNAI-600 092.



FOR OFFICE USE
SANCTIONED
No. 22 of 2016
Date: 22/07/2016



STATEMENT OF PLAN PROVISION

- 1) ASSHSE NO. -
- 2) DETAILED PROVISIONED FOR THE YEAR: 1972
- 3) AREA OF THE PLOT: 1.40 HA. (14,41,685 S.M.)
- 4) AREA OF COVERED AREA: 1,87,90 S.M. OR 20,281 S.M. (6,82,590 S.F.)
- 5) AREA OF OPEN SPACES: 1,17,66 S.M. (2,64,870 S.F.)
- 6) TOTAL HEIGHT OF THE BUILDING: 12.00 M.

NO.	DESCRIPTION	AREA	UNIT
1	COVERED AREA	1,87,90	S.M.
2	OPEN SPACES	1,17,66	S.M.
3	TOTAL	3,05,56	S.M.

NO.	DESCRIPTION	AREA	UNIT
1	COVERED AREA	1,87,90	S.M.
2	OPEN SPACES	1,17,66	S.M.
3	TOTAL	3,05,56	S.M.

NO.	DESCRIPTION	AREA	UNIT
1	COVERED AREA	1,87,90	S.M.
2	OPEN SPACES	1,17,66	S.M.
3	TOTAL	3,05,56	S.M.

SPECIFICATIONS
1) ALL CONSTRUCTION WORK SHALL BE IN ACCORDANCE WITH THE IS STANDARDS.
2) THE BUILDING SHALL BE CONSTRUCTED IN ACCORDANCE WITH THE IS STANDARDS.
3) THE BUILDING SHALL BE CONSTRUCTED IN ACCORDANCE WITH THE IS STANDARDS.
4) THE BUILDING SHALL BE CONSTRUCTED IN ACCORDANCE WITH THE IS STANDARDS.
5) THE BUILDING SHALL BE CONSTRUCTED IN ACCORDANCE WITH THE IS STANDARDS.

OWNERS' CERTIFICATE
I HEREBY CERTIFY THAT THE ABOVE SPECIFICATIONS ARE IN ACCORDANCE WITH THE IS STANDARDS.
I HEREBY CERTIFY THAT THE ABOVE SPECIFICATIONS ARE IN ACCORDANCE WITH THE IS STANDARDS.
I HEREBY CERTIFY THAT THE ABOVE SPECIFICATIONS ARE IN ACCORDANCE WITH THE IS STANDARDS.

ENGINEER'S CERTIFICATE
I HEREBY CERTIFY THAT THE ABOVE SPECIFICATIONS ARE IN ACCORDANCE WITH THE IS STANDARDS.
I HEREBY CERTIFY THAT THE ABOVE SPECIFICATIONS ARE IN ACCORDANCE WITH THE IS STANDARDS.
I HEREBY CERTIFY THAT THE ABOVE SPECIFICATIONS ARE IN ACCORDANCE WITH THE IS STANDARDS.

C. A. CONSTRUCTION
(A GROUP OF CIVIL ENGINEERS)
11, NO. 4, K. K. ROAD, NO. 80, CROSSING ROAD, CHENNAI UNIVERSITY CAMPUS, CHENNAI-600 092.