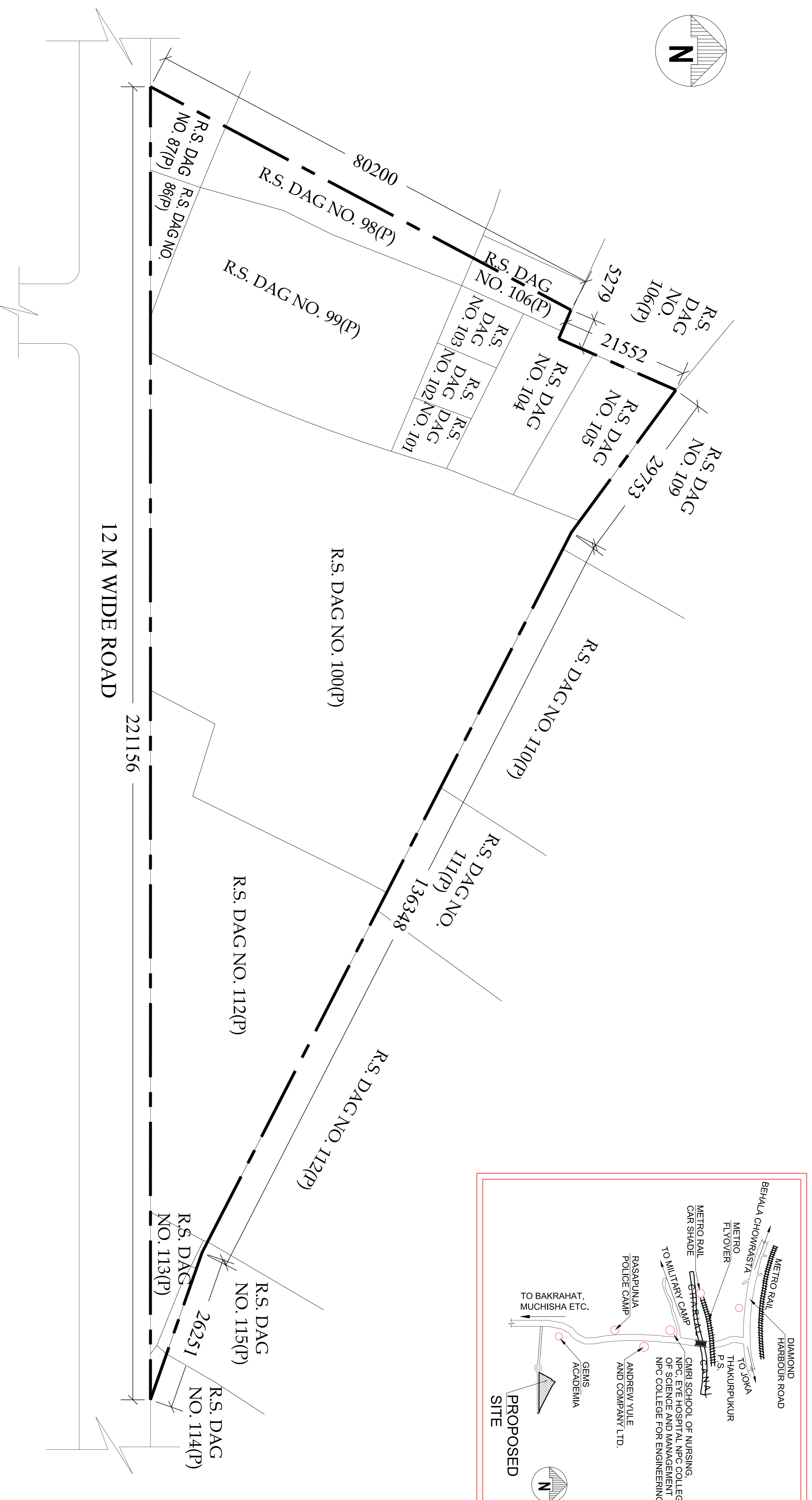


**SITE PLAN OF TWO STOREIED BUNGALOW AT R.S. DAG NO. 86(P),87(P),98(P),99(P) ,100 (P),101,102, 103, 104, 105,106(P),112(P), 113(P), 114(P),115(P),
 MOUZA- UTAR KAZIRAHAT ,J.L. NO -22, UNDER P.S. BISHNUPUR ,P.O. RASAPUNJA, DIST- SOUTH 24 PARGANAS, UNDER PASCHIM BISHNUPUR
 GRAM PANCHAYAT.**

LAND AREA = 9195.71 SQ.M. = 98983 SQ.FT. = 2.27 ACRE



ALL DIMENSION IN MM

.....
AUTHORIZED SIGNATORY
