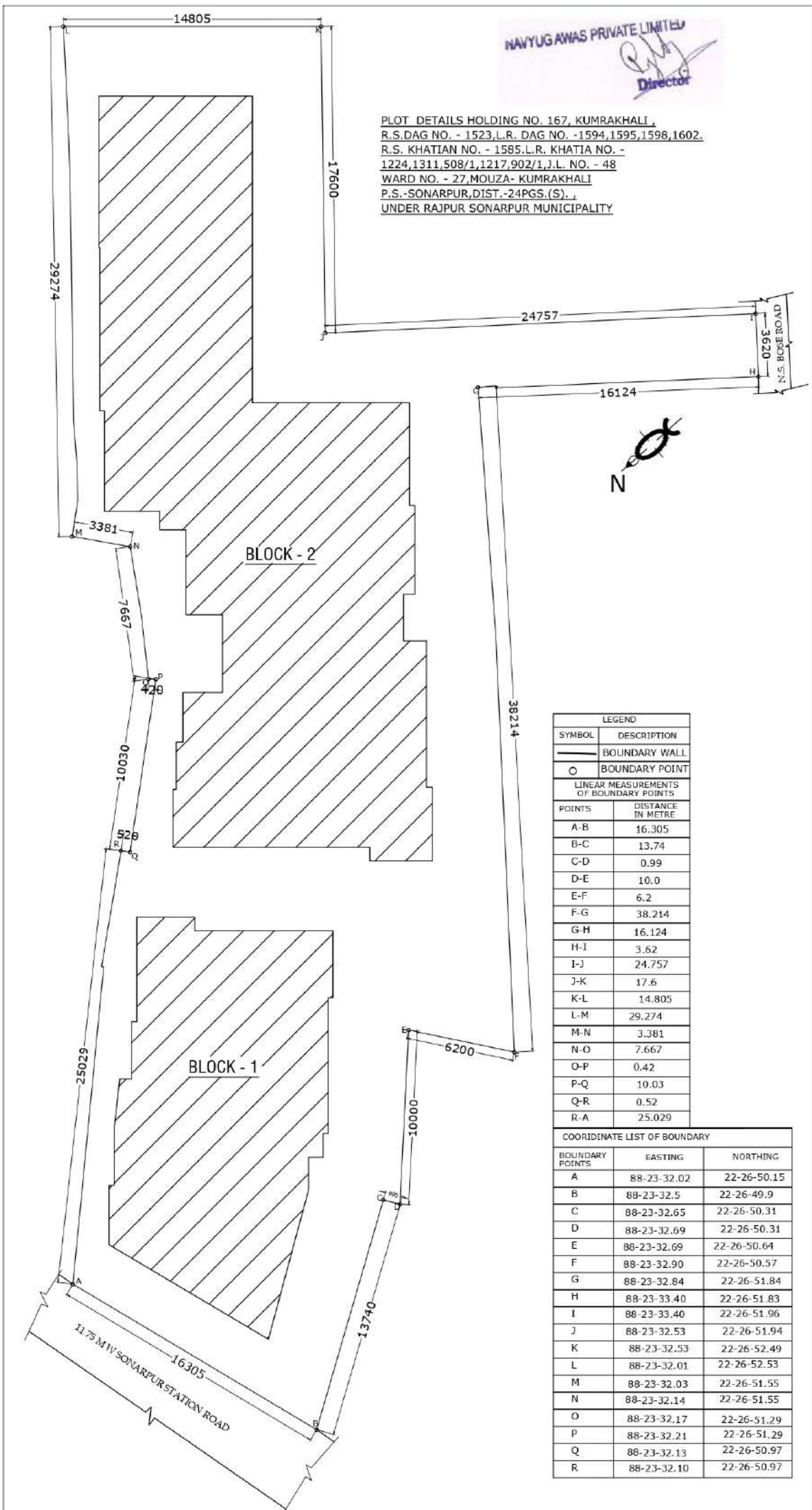


NAVYUGAWAS PRIVATE LIMITED  
*[Signature]*  
 Director

PLOT DETAILS HOLDING NO. 167, KUMRAKHALI,  
 R.S. DAG NO. - 1523, L.R. DAG NO. - 1594, 1595, 1598, 1602,  
 R.S. KHATIAN NO. - 1585, L.R. KHATIA NO. -  
 1224, 1311, 508/1, 1217, 902/1, J.L. NO. - 48  
 WARD NO. - 27, MOUZA- KUMRAKHALI  
 P.S.-SONARPUR, DIST.-24PGS.(S).,  
 UNDER RAJPUR SONARPUR MUNICIPALITY



LEGEND	
—	BOUNDARY WALL
○	BOUNDARY POINT

LINEAR MEASUREMENTS OF BOUNDARY POINTS	
POINTS	DISTANCE IN METRE
A-B	16.305
B-C	13.74
C-D	0.99
D-E	10.0
E-F	6.2
F-G	38.214
G-H	16.124
H-I	3.62
I-J	24.757
J-K	17.6
K-L	14.805
L-M	29.274
M-N	3.381
N-O	7.667
O-P	0.42
P-Q	10.03
Q-R	0.52
R-A	25.029

COORDINATE LIST OF BOUNDARY		
BOUNDARY POINTS	EASTING	NORTHING
A	88-23-32.02	22-26-50.15
B	88-23-32.5	22-26-49.9
C	88-23-32.65	22-26-50.31
D	88-23-32.69	22-26-50.31
E	88-23-32.69	22-26-50.64
F	88-23-32.90	22-26-50.57
G	88-23-32.84	22-26-51.84
H	88-23-33.40	22-26-51.83
I	88-23-33.40	22-26-51.96
J	88-23-32.53	22-26-51.94
K	88-23-32.53	22-26-52.49
L	88-23-32.01	22-26-52.53
M	88-23-32.03	22-26-51.55
N	88-23-32.14	22-26-51.55
O	88-23-32.17	22-26-51.29
P	88-23-32.21	22-26-51.29
Q	88-23-32.13	22-26-50.97
R	88-23-32.10	22-26-50.97