

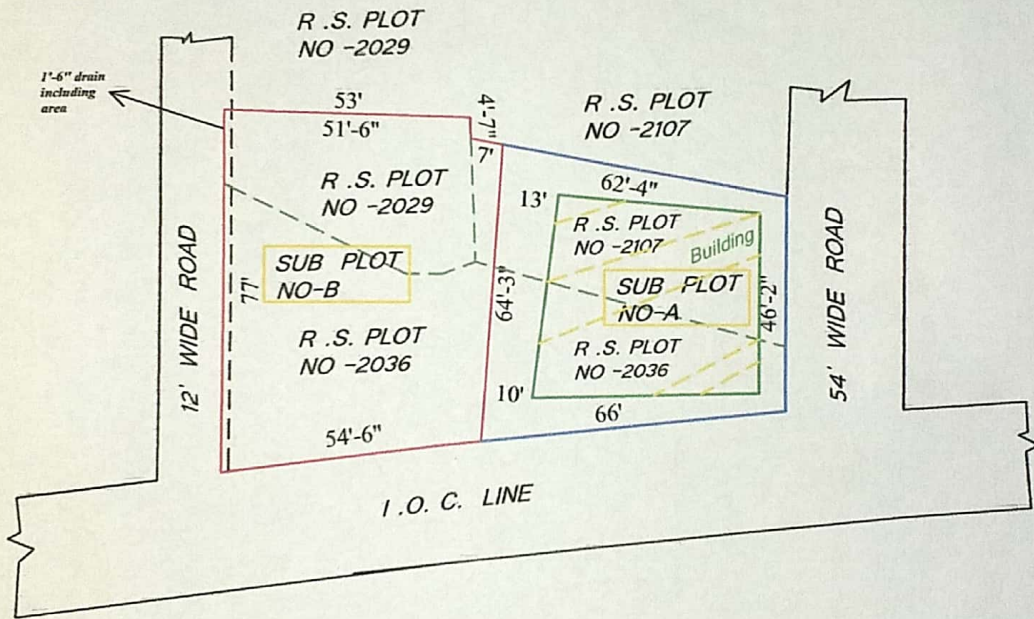
MOUZA - BHIRINGI J.L. NO- 68 P.S. - DURGAPUR

DIST. - PASCHIM BARDHAMAN.

LATITUDE : 23.5453274
LONGITUDE : 87.2812929

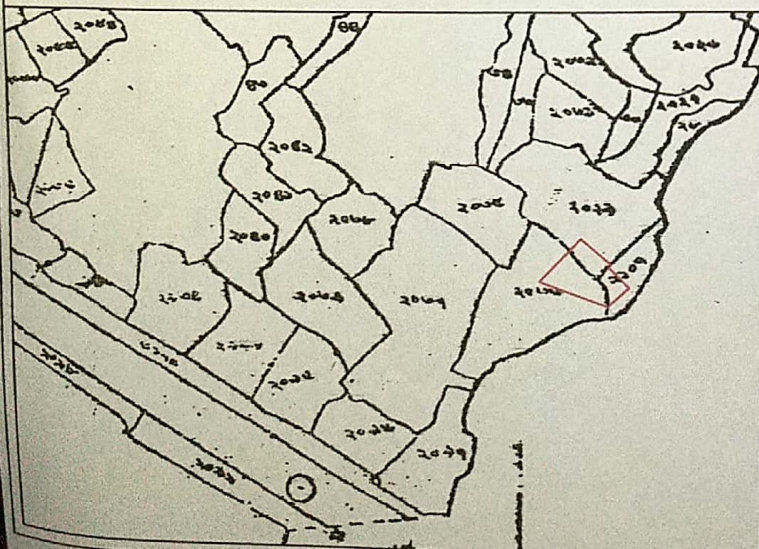


SUB PLOT NO	R.S.PLOT NO	AREA	T./AREA	COLOUR
A	2036	2 KH. 3.5 CH.	4 KH.13 CH.	BLUE
	2107	2KH.9 .5 CH.		
B	2029	1 KH. 13 CH.	5 KH.13 CH.	RED
	2036	3 KH. 13 CH.		
	2107	03 CH.		



R.S. INDEX

SCALE -1"-330'



DRAWN BY
Ujjwal Paul
29.07.2020
UJJWAL PAUL
(Land Surveyor)
Regd No.-W.B.K.-253/1997
Ultaryan, PO-Amrai
Dist.-Pashim Bardhaman