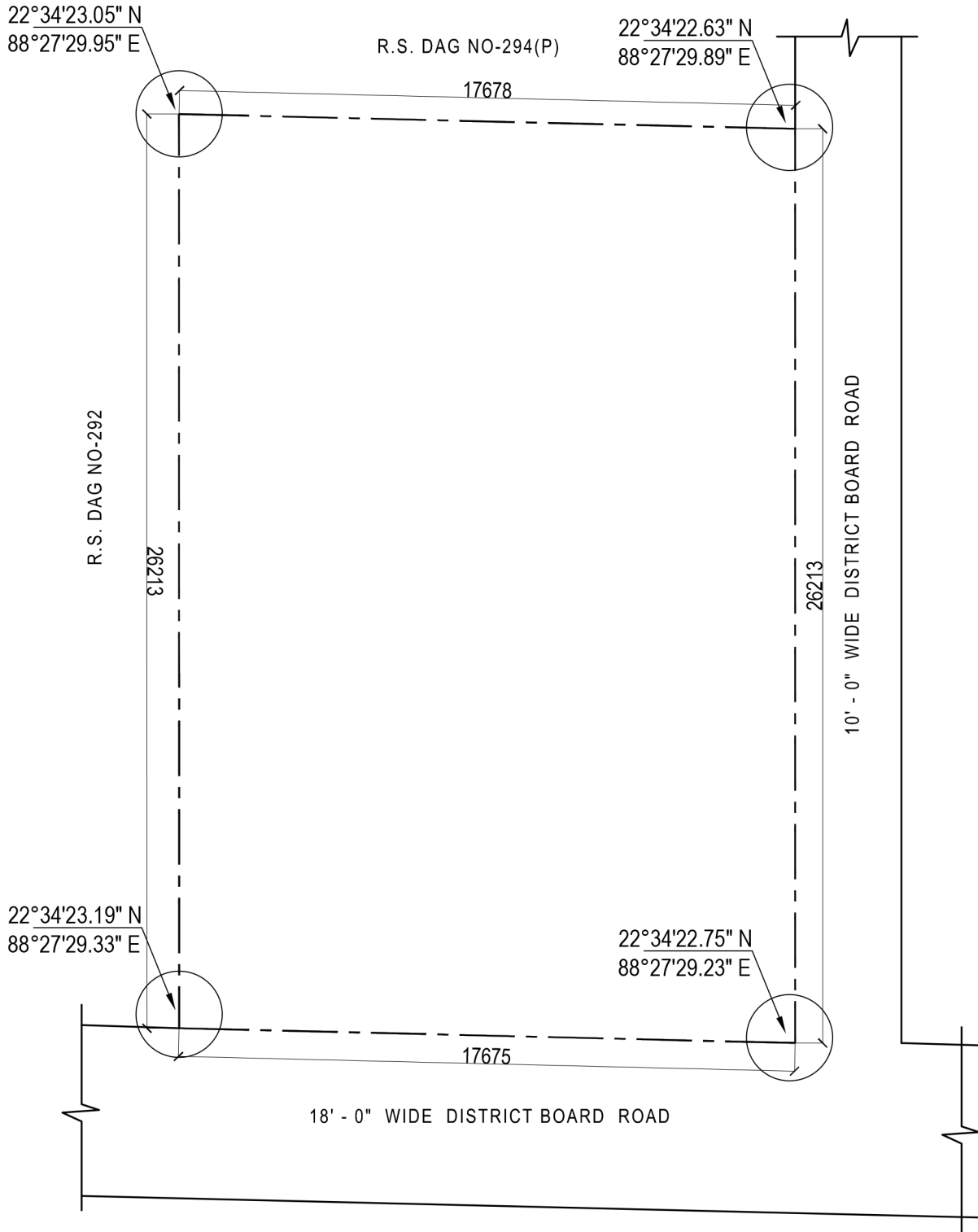


SITE PLAN AT MOUJA-THAKDARI, J.L NO.-19, TOUJI NO. 145, PART OF R.S. DAG NO. 294, L.R. KHATIAN NO. - 1490, P.S.-NEW TOWN, DIST. NORTH 24 PARAGANAS. UNDER THE JURIDICTION OF II NO.MOHISH BATHAN GRAM PANCHAYAT.

LAND AREA = 468.22 SQ. MT. = 5039.92 SQ.FT. = 6 K-15 CH- 45 SQ.FT



Dipson Multiproducts Pvt. Ltd.

S.K. Kothari
Director.

ALL DIMENSIONS ARE IN MM

AUTHORIZED SIGNATORY