

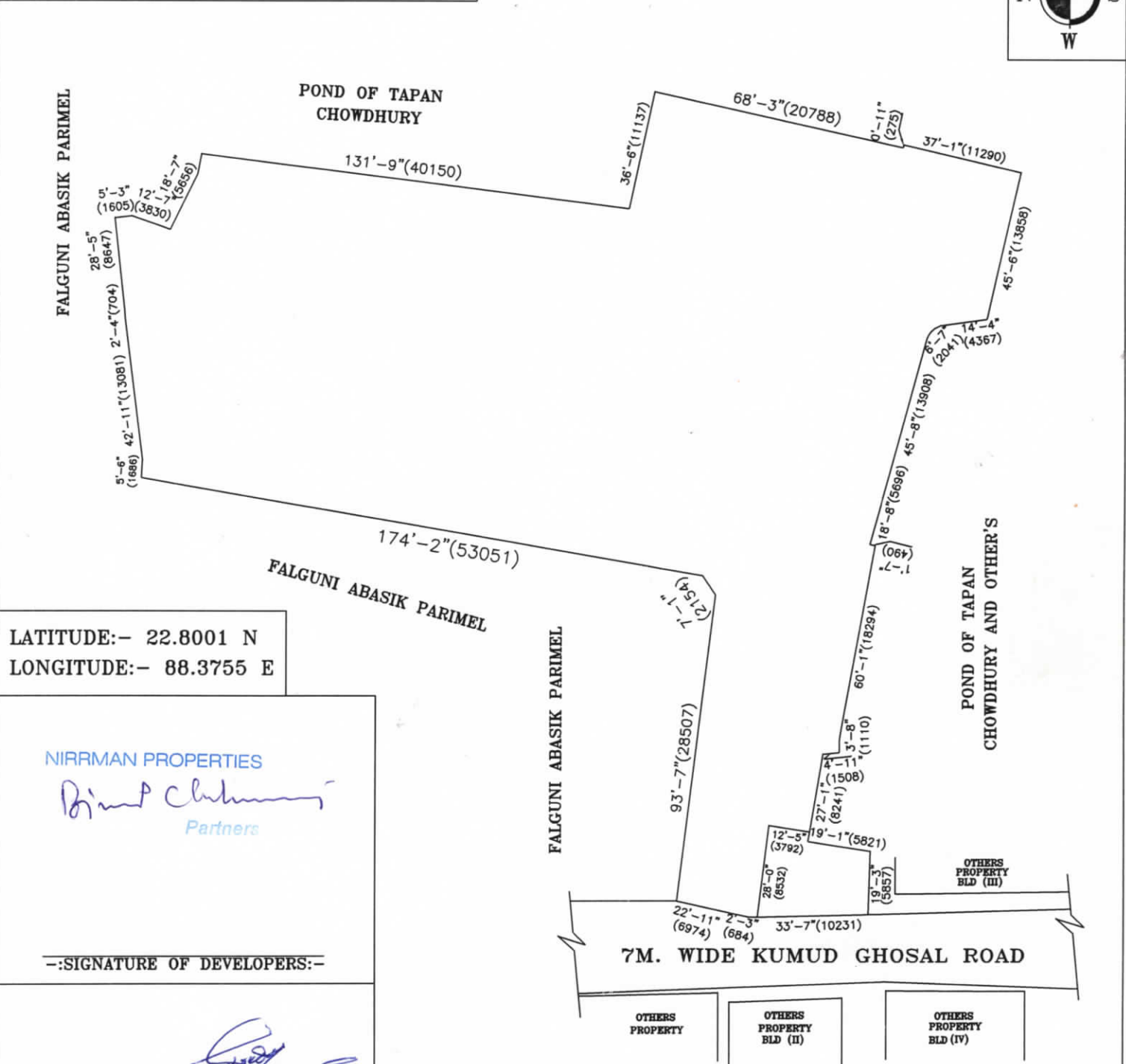
NIRMAN PROPERTIES

Date.....

110/10, Kumud Ghosal Road,
Ariadaha, Kolkata-700 057

LOCATION DETAILS OF THE PROJECT WITH CLEAR DEMARCTION OF LAND DEDICATED FOR THE PROJECT ALONG WITH ITS BOUNDARIES

DEVELOPER:- NIRMAN PROPERTIES
PROJECT:- CHOUDHURY PARK ENCLAVE



LATITUDE:- 22.8001 N
LONGITUDE:- 88.3755 E

NIRMAN PROPERTIES

Binit Choudhury
Partners

--SIGNATURE OF DEVELOPERS:--

Souvik Mondal
SOUVIK MONDAL
B. TECH (CIVIL), CHARTERED ENGINEER
PLANNER & STRUCTURAL ENGINEER
KAMARHATI MUNICIPALITY, L.B.S. NO.-A-12
MOBILE : 8017419098
NO. 2002113063 FOR THE YEAR.2021-22

--SIGNATURE OF ENGINEER:--

LOCATION PLAN
SCALE=1:500