



SCHEDULE OF DOORS & WINDOWS		
NO.	TYPE	SIZE
F.C.D	2150	1100X2150
D	2150	1500X2150
D1	2150	1200X2150
D2	2150	900X2150
D3	2150	750X2150
D4	2150	1000X2150
D5	2150	1800X2150
DW1	2150	2100X2150
W1	350	2150
W1A	350	2150
W2	350	2150
W2A	950	2150
W3	1050	2150
W3A	1050	2150
W3B	950	2150
W3C	950	2150
W4	1250	2150
W4A	950	2150
C.C.	AS PER ELEVATION	

**NOTE**  
 \* ARTIFICIAL LIGHTING & MECHANICAL VENTILATION

**CERTIFICATE OF OWNER**  
 CERTIFIED THAT I HAVE GONE THROUGH THE BUILDING RULES FOR RAJPUR SONARPUR MUNICIPALITY AND ALSO UNDER TAKE TO ABIDE BY THOSE RULES DURING AND AFTER CONSTRUCTION OF THE BUILDING.

**NAME OF OWNER**  
 1. KYAL ENCLAVE PVT. LTD.  
 2. AARAV CONCLAVE PVT. LTD.  
 3. AARAV DEVELOPERS PVT. LTD.  
 4. LINGRAJ PROPERTIES PVT. LTD.  
 5. WALL STREET HOUSING PVT. LTD.  
 6. WALL STREET PLAZA PVT. LTD.  
 7. WONDERFUL COMPLEX PVT. LTD.  
 8. WONDERFUL BUILDCON PVT. LTD.  
 9. IMPERIAL PLAZA PVT. LTD.  
 10. EMPIRE HIGHRISE PVT. LTD.  
 11. EVERGROW DEVELOPERS PVT. LTD.  
 12. EXCELLENT CONCLAVE PVT. LTD.  
 13. WELCOME TOWER PVT. LTD.  
 14. WELCOME COMPLEX PVT. LTD.  
 15. IMPERIAL RESIDENCY PVT. LTD.  
 16. WINSOME PROJECTS PVT. LTD.  
 17. WINSOME TOWER PVT. LTD.  
 18. WINSOME ENCLAVE PVT. LTD.  
 19. WINSOME PLAZA PVT. LTD.  
 20. INDRALOK COMPLEX PVT. LTD.  
 21. WELWILD ENCLAVE PVT. LTD.  
 22. UTILITY COMPLEX PVT. LTD.  
 23. INTERCITY PROJECTS PVT. LTD.  
 24. EKDANT PROJECTS PVT. LTD.  
 25. INOX HOUSING PVT. LTD.  
 26. EFFORT DEVELOPERS PVT. LTD.  
 27. ENABLE ESTATE PVT. LTD.  
 28. ENDORSE REAL ESTATE PVT. LTD.  
 29. INDRALOK CONSTRUCTION PVT. LTD.  
 30. ELASTIC BUILDERS PVT. LTD.  
 31. PRATTI CHOPRA  
 32. ELECT. CONSTRUCTION PVT. LTD.  
 33. ANITA AGARWAL  
 34. MADHU DUGAR  
 35. KIRAN AGARWAL  
 36. MANISHA AGARWAL  
 37. WELCOME INFRAPROJECTS PVT. LTD.  
 38. INSTILL DEVELOPERS PVT. LTD.  
 39. WRAP REAL ESTATE PVT. LTD.  
 40. INSIST CONSTRUCTION PVT. LTD.  
 41. INTENT CONCLAVE PVT. LTD.  
 42. INTENT BUILDERS PVT. LTD.  
 43. INTUITION DEVELOPERS PVT. LTD.  
 44. WOODLAND PROCON PVT. LTD.  
 45. WAKFUL CONSTRUCTION PVT. LTD.  
 46. WELCOME CONCLAVE PVT. LTD.  
 47. ISOLATE REAL ESTATE PVT. LTD.  
 48. ELECT REAL ESTATE PVT. LTD.  
 49. INDEX DEVELOPERS PVT. LTD.  
 50. ELITE DEVCON PVT. LTD.  
 51. WEIGHTY DEVELOPERS PVT. LTD.  
 52. INCREDBLE BUILDERS PVT. LTD.  
 53. ELIGIBLE PROCON PVT. LTD.  
 54. IDEAL CONCLAVE PVT. LTD.  
 55. RAVI DUGAR  
 56. P.S. SRILAKSHMI HEIGHTS DEVELOPERS  
 57. MANYA AGENCIES PVT. LTD.  
 58. SUVRIDHI STOKIST PVT. LTD.  
 59. RISHI ENCLAVE PVT. LTD.  
 60. RISHI COMPLEX PVT. LTD.

**CERTIFICATE OF STRUCTURAL STABILITY**  
 WE HEREBY CERTIFY THAT THE FOUNDATION AND THE SUPERSTRUCTURE OF THE BUILDING PROPOSED FOR CONSTRUCTION ON L.R. DAG NO. 475, 481, 487, 488, 490, 493 TO 505, 507, 508 TO 510, 511, 512, 514, 516, 517, 518, 519, 520, 521, 522, 523, 524, 525, 526, 527, 528, 529, 530, 531, 532, 533, 534, 535, 536, 537, 538, 539, 540, 541, 542, 543, 544, 545, 546, 547, 548, 549, 550, 551, 552, 553, 554, 555, 556, 557, 558, 559, 560, 561, 562, 563, 564, 565, 566, 567, 568, 569, 570, 571, 572, 573, 574, 575, 576, 577, 578, 579, 580, 581, 582, 583, 584, 585, 586, 587, 588, 589, 590, 591, 592, 593, 594, 595, 596, 597, 598, 599, 600, 601, 602, 603, 604, 605, 606, 607, 608, 609, 610, 611, 612, 613, 614, 615, 616, 617, 618, 619, 620, 621, 622, 623, 624, 625, 626, 627, 628, 629, 630, 631, 632, 633, 634, 635, 636, 637, 638, 639, 640, 641, 642, 643, 644, 645, 646, 647, 648, 649, 650, 651, 652, 653, 654, 655, 656, 657, 658, 659, 660, 661, 662, 663, 664, 665, 666, 667, 668, 669, 670, 671, 672, 673, 674, 675, 676, 677, 678, 679, 680, 681, 682, 683, 684, 685, 686, 687, 688, 689, 690, 691, 692, 693, 694, 695, 696, 697, 698, 699, 700, 701, 702, 703, 704, 705, 706, 707, 708, 709, 710, 711, 712, 713, 714, 715, 716, 717, 718, 719, 720, 721, 722, 723, 724, 725, 726, 727, 728, 729, 730, 731, 732, 733, 734, 735, 736, 737, 738, 739, 740, 741, 742, 743, 744, 745, 746, 747, 748, 749, 750, 751, 752, 753, 754, 755, 756, 757, 758, 759, 760, 761, 762, 763, 764, 765, 766, 767, 768, 769, 770, 771, 772, 773, 774, 775, 776, 777, 778, 779, 780, 781, 782, 783, 784, 785, 786, 787, 788, 789, 790, 791, 792, 793, 794, 795, 796, 797, 798, 799, 800, 801, 802, 803, 804, 805, 806, 807, 808, 809, 810, 811, 812, 813, 814, 815, 816, 817, 818, 819, 820, 821, 822, 823, 824, 825, 826, 827, 828, 829, 830, 831, 832, 833, 834, 835, 836, 837, 838, 839, 840, 841, 842, 843, 844, 845, 846, 847, 848, 849, 850, 851, 852, 853, 854, 855, 856, 857, 858, 859, 860, 861, 862, 863, 864, 865, 866, 867, 868, 869, 870, 871, 872, 873, 874, 875, 876, 877, 878, 879, 880, 881, 882, 883, 884, 885, 886, 887, 888, 889, 890, 891, 892, 893, 894, 895, 896, 897, 898, 899, 900, 901, 902, 903, 904, 905, 906, 907, 908, 909, 910, 911, 912, 913, 914, 915, 916, 917, 918, 919, 920, 921, 922, 923, 924, 925, 926, 927, 928, 929, 930, 931, 932, 933, 934, 935, 936, 937, 938, 939, 940, 941, 942, 943, 944, 945, 946, 947, 948, 949, 950, 951, 952, 953, 954, 955, 956, 957, 958, 959, 960, 961, 962, 963, 964, 965, 966, 967, 968, 969, 970, 971, 972, 973, 974, 975, 976, 977, 978, 979, 980, 981, 982, 983, 984, 985, 986, 987, 988, 989, 990, 991, 992, 993, 994, 995, 996, 997, 998, 999, 1000.

**ALOK ROY**  
 Registered Geotechnical Engineer  
 Rajpur Sonarpur Municipality  
 No. 008 / G.T. Encl., Class-I

**SIGN. OF GEO-TECHNICAL ENGG.**

**SANJIV K. BARKH**  
 M.E. (STRUCTURAL), CONS. ENGN.  
 R.C.E. No. 215, RAJPUR SONARPUR MUNICIPALITY

**SIGN. OF STRUCTURAL ENGG.**

**SANJIB GUHA**  
 BSC. B.E., P.E. (E-119554-5)  
 CHARTERED ENGINEER  
 E.S.R. No. 101, RAJPUR SONARPUR MUNICIPALITY

**SIGN. OF STRUCTURAL REVIEWER**

**JAY PRAKASH AGRAWAL**  
 EBI/BJPSON/EB/03-04  
 SIGNATURE OF ARCHITECT

**TITLE:**  
 THIRD FLOOR-PODIUM PLAN (BLOCK-2,3&4)

**PROJECT:**  
 REVISED PLAN OF (B-G-XXIII), (G-XXIV), & (B-G-XXV) STORED RESIDENTIAL COMPLEX AT MOZA KURARAKHALLI, 700-4K, L.R. DAG NO. 475, 481, 487, 488, 490, 493 TO 505, 507, 508 TO 510, 511, 512, 514, 516, 517, 518, 519, 520, 521, 522, 523, 524, 525, 526, 527, 528, 529, 530, 531, 532, 533, 534, 535, 536, 537, 538, 539, 540, 541, 542, 543, 544, 545, 546, 547, 548, 549, 550, 551, 552, 553, 554, 555, 556, 557, 558, 559, 560, 561, 562, 563, 564, 565, 566, 567, 568, 569, 570, 571, 572, 573, 574, 575, 576, 577, 578, 579, 580, 581, 582, 583, 584, 585, 586, 587, 588, 589, 590, 591, 592, 593, 594, 595, 596, 597, 598, 599, 600, 601, 602, 603, 604, 605, 606, 607, 608, 609, 610, 611, 612, 613, 614, 615, 616, 617, 618, 619, 620, 621, 622, 623, 624, 625, 626, 627, 628, 629, 630, 631, 632, 633, 634, 635, 636, 637, 638, 639, 640, 641, 642, 643, 644, 645, 646, 647, 648, 649, 650, 651, 652, 653, 654, 655, 656, 657, 658, 659, 660, 661, 662, 663, 664, 665, 666, 667, 668, 669, 670, 671, 672, 673, 674, 675, 676, 677, 678, 679, 680, 681, 682, 683, 684, 685, 686, 687, 688, 689, 690, 691, 692, 693, 694, 695, 696, 697, 698, 699, 700, 701, 702, 703, 704, 705, 706, 707, 708, 709, 710, 711, 712, 713, 714, 715, 716, 717, 718, 719, 720, 721, 722, 723, 724, 725, 726, 727, 728, 729, 730, 731, 732, 733, 734, 735, 736, 737, 738, 739, 740, 741, 742, 743, 744, 745, 746, 747, 748, 749, 750, 751, 752, 753, 754, 755, 756, 757, 758, 759, 760, 761, 762, 763, 764, 765, 766, 767, 768, 769, 770, 771, 772, 773, 774, 775, 776, 777, 778, 779, 780, 781, 782, 783, 784, 785, 786, 787, 788, 789, 790, 791, 792, 793, 794, 795, 796, 797, 798, 799, 800, 801, 802, 803, 804, 805, 806, 807, 808, 809, 810, 811, 812, 813, 814, 815, 816, 817, 818, 819, 820, 821, 822, 823, 824, 825, 826, 827, 828, 829, 830, 831, 832, 833, 834, 835, 836, 837, 838, 839, 840, 841, 842, 843, 844, 845, 846, 847, 848, 849, 850, 851, 852, 853, 854, 855, 856, 857, 858, 859, 860, 861, 862, 863, 864, 865, 866, 867, 868, 869, 870, 871, 872, 873, 874, 875, 876, 877, 878, 879, 880, 881, 882, 883, 884, 885, 886, 887, 888, 889, 890, 891, 892, 893, 894, 895, 896, 897, 898, 899, 900, 901, 902, 903, 904, 905, 906, 907, 908, 909, 910, 911, 912, 913, 914, 915, 916, 917, 918, 919, 920, 921, 922, 923, 924, 925, 926, 927, 928, 929, 930, 931, 932, 933, 934, 935, 936, 937, 938, 939, 940, 941, 942, 943, 944, 945, 946, 947, 948, 949, 950, 951, 952, 953, 954, 955, 956, 957, 958, 959, 960, 961, 962, 963, 964, 965, 966, 967, 968, 969, 970, 971, 972, 973, 974, 975, 976, 977, 978, 979, 980, 981, 982, 983, 984, 985, 986, 987, 988, 989, 990, 991, 992, 993, 994, 995, 996, 997, 998, 999, 1000.

**ARCHITECTS**  
**AGRAWAL & AGRAWAL**  
 Workshop House, 2/5 Swaha Baiyya Street, Phone-700 020  
 www.agrawalarchitects.in Phone-4060-4100-2

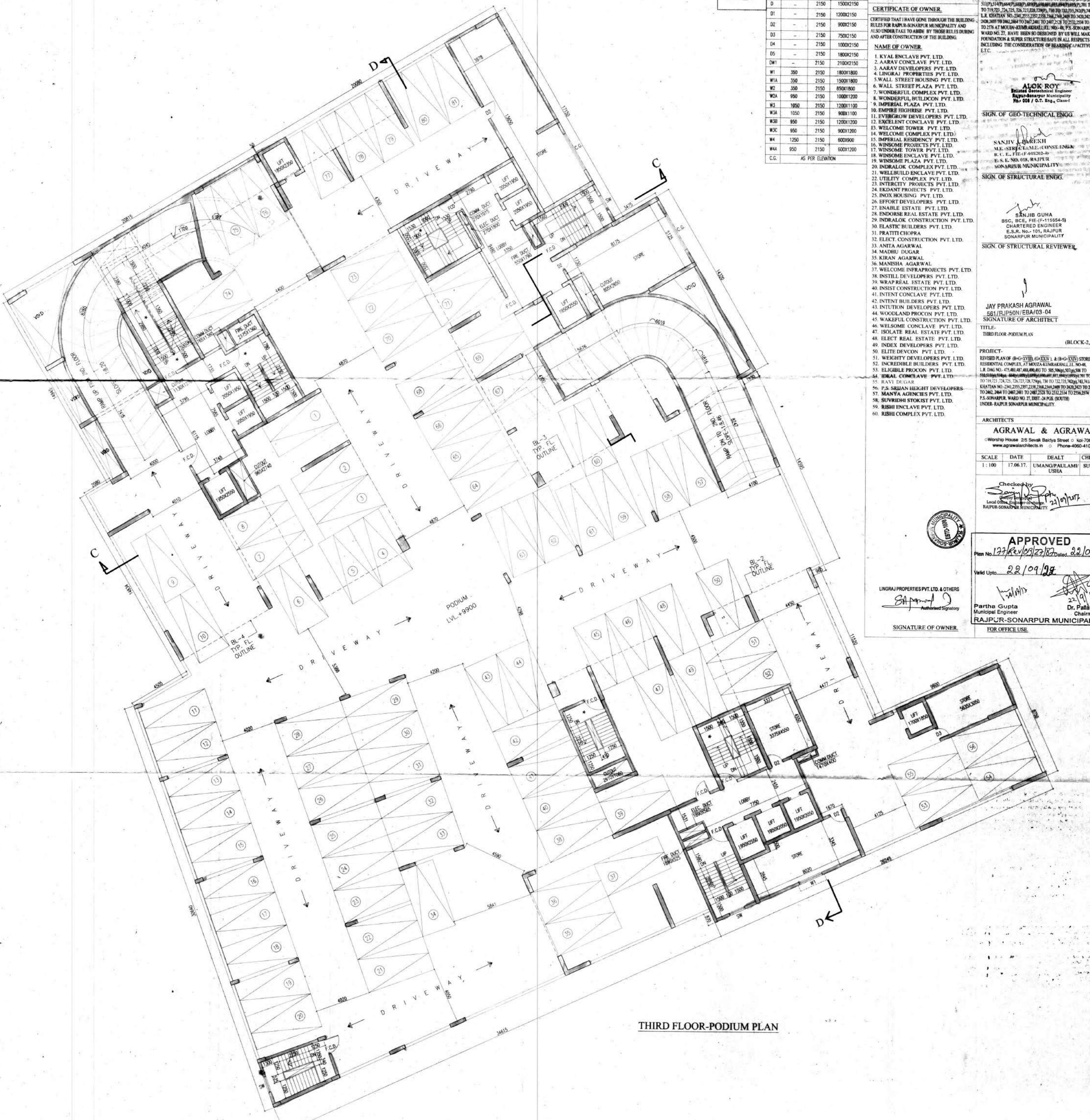
SCALE	DATE	DEALT	CHECKED
1:100	17.06.17	UMANG/PALLAM/USHA	SUPRIYA

Checked by: *Sanjiv Barkh*  
 Local Office Engineer-in-Charge, 22/09/17  
 RAJPUR SONARPUR MUNICIPALITY

**APPROVED**  
 Plan No. 127/Rev/09/27/17 Dated: 22/09/17  
 Valid Upto: 22/09/19

**SIGNATURE OF OWNER:**  
 LINGRAJ PROPERTIES PVT. LTD. & OTHERS  
*Satish*  
 AUTHORIZED SIGNATORY

**SIGNATURE OF CHAIRMAN:**  
*Dr. Patab Das*  
 22/09/17  
 Dr. Patab Das  
 Chairman  
 RAJPUR SONARPUR MUNICIPALITY  
 FOR OFFICE USE



THIRD FLOOR-PODIUM PLAN