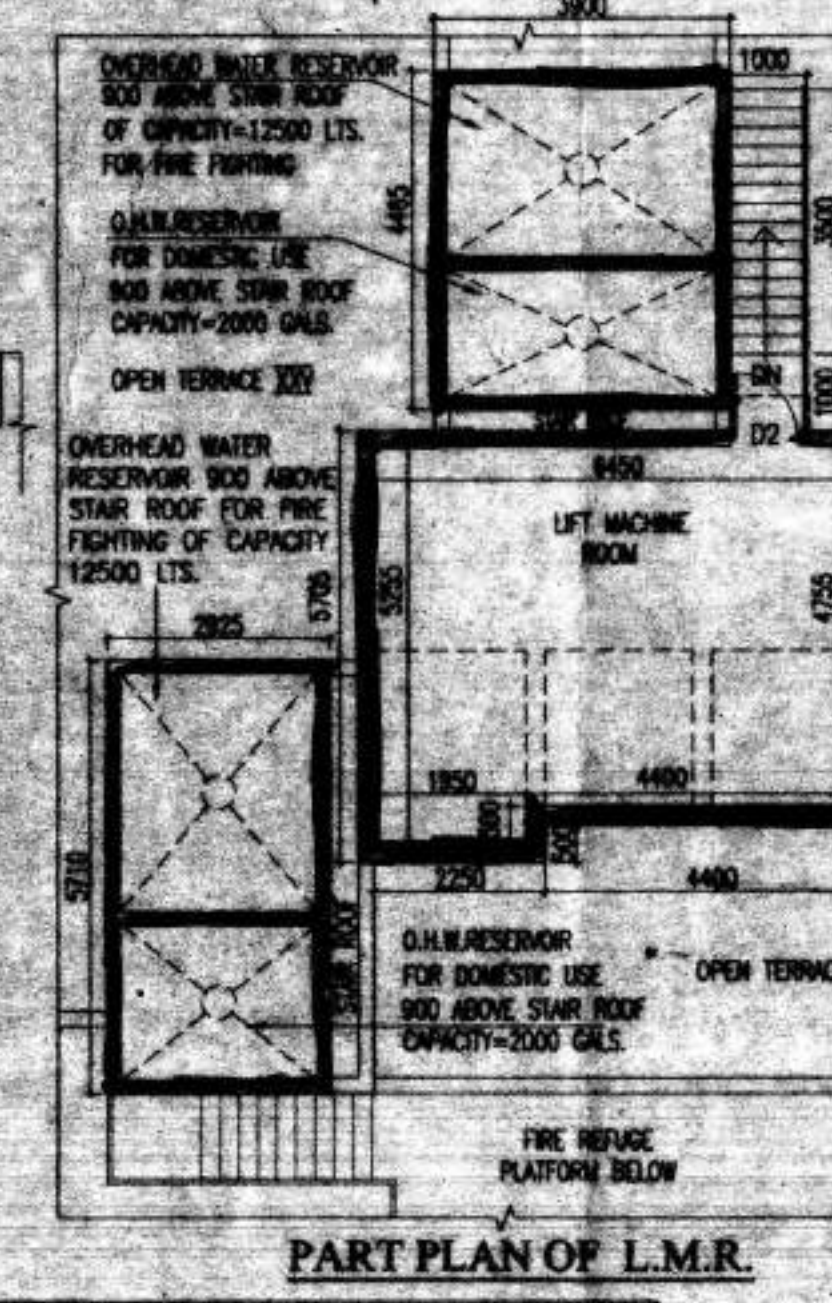
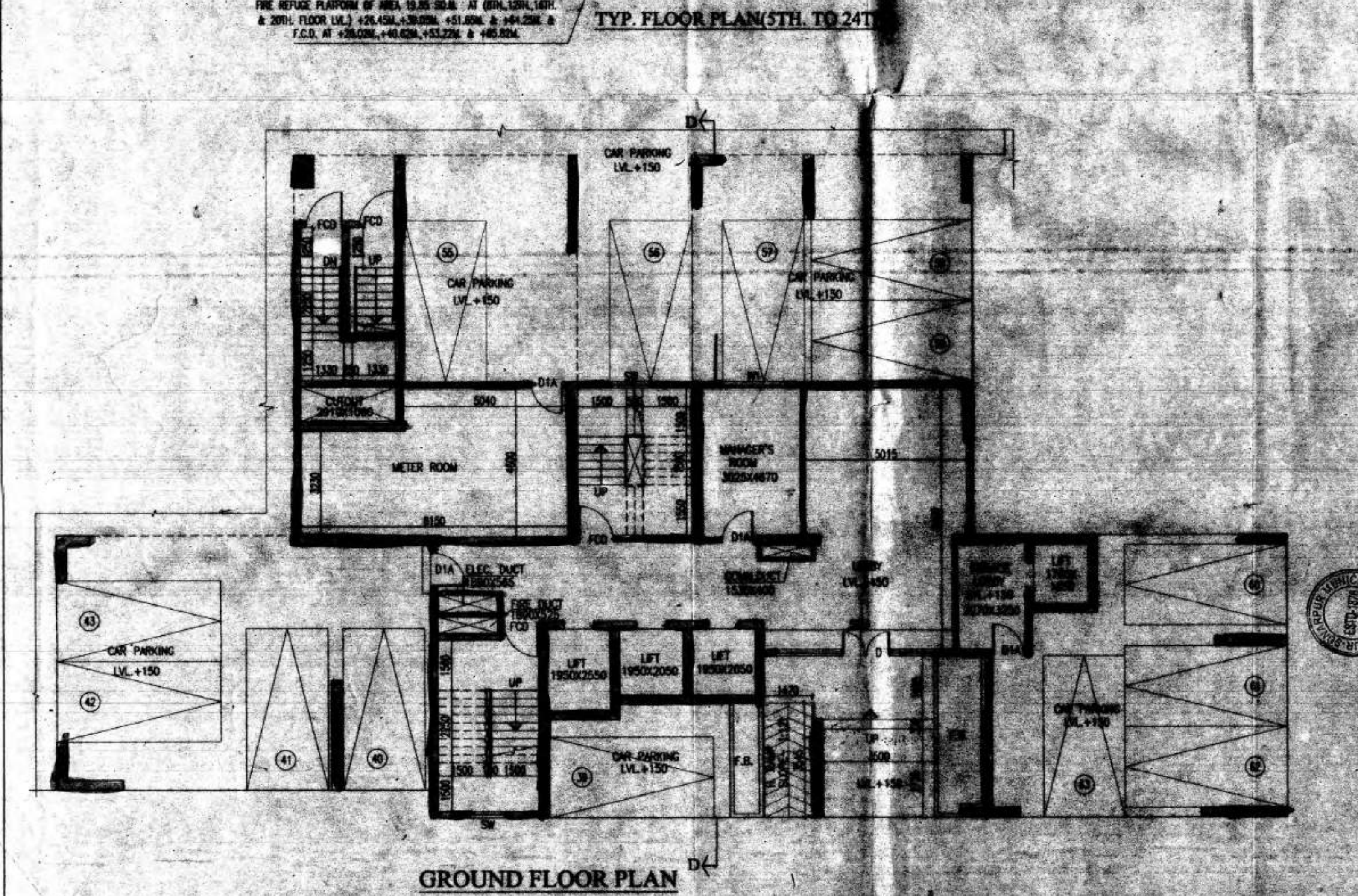
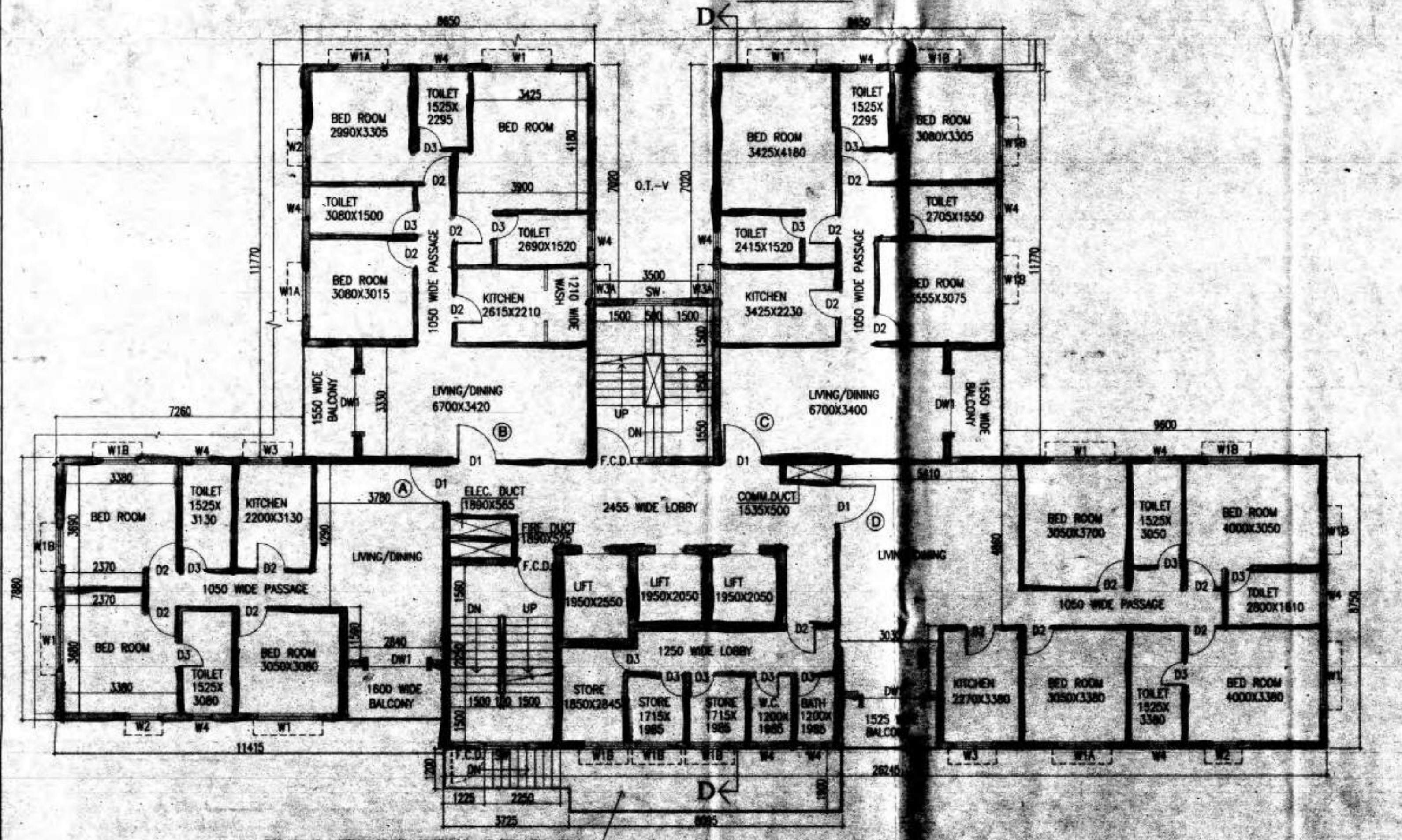
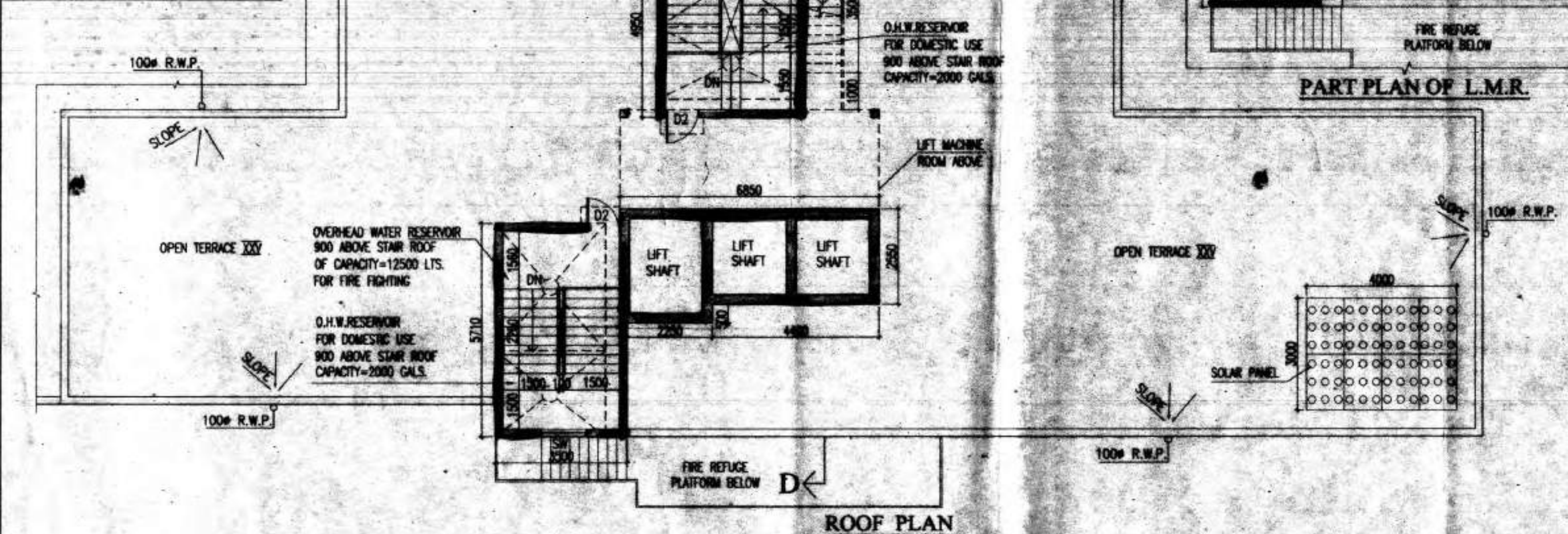


SCHEDULE OF DOORS & WINDOWS

MKG.	SILL	LINTEL	SIZE
F.C.D.	2150	1100x2150	
D	2150	1500x2150	
D1	2150	1200x2150	
D2	2150	900x2150	
D3	2150	750x2150	
D4	2150	1000x2150	
D5	2150	1800x2150	
DW1	2150	2100x2150	
W1	350	2150	1800x1800
W1A	350	2150	1500x1800
W1B	350	2150	1200x1800
W2	350	2150	850x1800
W3	1050	2150	1200x1100
W3A	1050	2150	900x1100
W4	1250	2150	800x900
W2A	950	2150	1000x1200
W3B	950	2150	1200x1200
W3C	950	2150	900x1200
W4A	950	2150	600x1200
C.G.	AS PER ELEVATION		
S.W.	AS PER ELEVATION		



- CERTIFICATE OF OWNER**
- CERTIFIED THAT I HAVE GONE THROUGH THE BUILDING RULES FOR RAJPUR SONARPUR MUNICIPALITY AND ALSO UNDER TAKE TO ABIDE BY THESE RULES DURING AND AFTER CONSTRUCTION OF THE BUILDING.
- NAME OF OWNER**
1. AYAL ENCLAVE PVT. LTD.
 2. AARAV ENCLAVE PVT. LTD.
 3. AARAV DEVELOPERS PVT. LTD.
 4. LINGRAJ PROPERTIES PVT. LTD.
 5. WALL STREET HOUSING PVT. LTD.
 6. WALL STREET PLAZA PVT. LTD.
 7. WONDERFUL COMPLEX PVT. LTD.
 8. WONDERFUL BUILDING PVT. LTD.
 9. IMPERIAL PLAZA PVT. LTD.
 10. EMPIRE HEIGHTS PVT. LTD.
 11. EVERGROW DEVELOPERS PVT. LTD.
 12. EXCELLENCE CONCLAVE PVT. LTD.
 13. WELCOME TOWER PVT. LTD.
 14. WELCOME COMPLEX PVT. LTD.
 15. IMPERIAL RESIDENCY PVT. LTD.
 16. WINSOME PROJECS PVT. LTD.
 17. WINSOME TOWER PVT. LTD.
 18. WINSOME ENCLAVE PVT. LTD.
 19. WINSOME PLAZA PVT. LTD.
 20. INDIRALOK COMPLEX PVT. LTD.
 21. WELLBUILD ENCLAVE PVT. LTD.
 22. UTILITY COMPLEX PVT. LTD.
 23. WINDMILL PROPERTIES PVT. LTD.
 24. EKDANT PROJECS PVT. LTD.
 25. INOX HOUSING PVT. LTD.
 26. EFFORT DEVELOPERS PVT. LTD.
 27. ENABLE ESTATE PVT. LTD.
 28. ENDORSE REAL ESTATE PVT. LTD.
 29. INDIRALOK CONSTRUCTION PVT. LTD.
 30. ELASTIC BUILDERS PVT. LTD.
 31. PRAITHI COPRA
 32. ELECT CONSTRUCTION PVT. LTD.
 33. ANITA AGARWAL
 34. MADHU DUGAR
 35. KIRAN AGARWAL
 36. MANISHA AGARWAL
 37. WELCOME ENTERPRETS PVT. LTD.
 38. INSTILL DEVELOPERS PVT. LTD.
 39. WRAP REAL ESTATE PVT. LTD.
 40. INSIST CONSTRUCTION PVT. LTD.
 41. INTENT CONCLAVE PVT. LTD.
 42. INTENT BUILDERS PVT. LTD.
 43. INTUTION DEVELOPERS PVT. LTD.
 44. WOODLAND PROCON PVT. LTD.
 45. WAKEFUL CONSTRUCTION PVT. LTD.
 46. WELLSOME CONCLAVE PVT. LTD.
 47. ISOLATE REAL ESTATE PVT. LTD.
 48. ELECT REAL ESTATE PVT. LTD.
 49. INDEK DEVELOPERS PVT. LTD.
 50. ELITE DEVCON PVT. LTD.
 51. WEIGHTY DEVELOPERS PVT. LTD.
 52. INCREDIBLE BUILDERS PVT. LTD.
 53. ELIGIBLE PROCON PVT. LTD.
 54. IDEAL CONCLAVE PVT. LTD.
 55. RAVI DUGAR
 56. P.S. SRIAM HEIGHT DEVELOPERS
 57. MANYA AGENCIES PVT. LTD.
 58. SUVRIDHI STOKIST PVT. LTD.
 59. RISHI ENCLAVE PVT. LTD.
 60. RISHI COMPLEX PVT. LTD.

LINGRAJ PROPERTIES PVT. LTD. & OTHERS

Signature

Authorised Signatory

SIGNATURE OF OWNER

CERTIFICATE OF STRUCTURAL STABILITY

WE HEREBY CERTIFIED THAT THE FOUNDATION AND THE SUPERSTRUCTURE OF THE BUILDING PROPOSED FOR CONSTRUCTION ON L.R. DAG NO. 475, 481, 487, 488, 490, 493 TO 505, 506(P), 507(P), 508 TO 510, 511(P), 514(P), 664(P), 667(P), 668(P), 669(P), 691, 694(P), 695(P), 701 TO 704, 710 TO 719, 723, 724, 725, 726, 727, 728, 729(P), 730 TO 732, 735, 740(P), 743, 744, 2465, L.R. KHATAN NO. 2341, 2355, 2357, 2358, 2368, 2369, 2409 TO 2420, 2423 TO 2428, 2455 TO 2462, 2464 TO 2467, 2481 TO 2487, 2529 TO 2532, 2534 TO 2536, 2574 TO 2576 AT MOJIA - JUMRAKHALI, I.E. NO. - 06, P.S. SONARPUR, WARD NO. 27, HAVE BEEN SO DESIGNED BY US WILL MAKE SUCH FOUNDATION & SUPER STRUCTURE SAFE IN ALL RESPECTS INCLUDING THE CONSIDERATION OF BEARING CAPACITY OF SOIL E.T.C.

ALOK ROY
 Enlisted Geotechnical Engineer
 Rajpur-Sonarpur Municipality
 No. 008 / G.T. Eng. - Class-I

SIGN. OF GEO-TECHNICAL ENGG.

Signature

SANJIV PAREKH
 M.E. (STRUCTURAL, CONST. ENGG.)
 U.C.E. (F-018202-2)
 E.S.F. NO. 018, RAJPUR
 SONARPUR MUNICIPALITY

SIGN. OF STRUCTURAL ENGG.

Signature

SANJIV GUHA
 BSC, BCE, FIE (F-115654-9)
 CHARTERED ENGINEER
 E.S.R. NO. - 101, RAJPUR
 SONARPUR MUNICIPALITY

SIGN. OF STRUCTURAL REVIEWER

JAY PRAKASH AGRAWAL
 561/RJP60/EBJA/03-04

SIGNATURE OF ARCHITECT

TITLE
 GROUND FLOOR PLAN, TYPICAL FLOOR PLAN (5TH. TO 24TH), ROOF PLAN & PART PLAN OF LIFT MACHINE ROOM (IN CLAUSE-2)

PROJECT
 REVISED PLAN OF (504-510, 511, 514 & 515) BLOCKS, BORNED INDUSTRIAL COMPLEX AT MOJIA - JUMRAKHALI, I.E. NO. 06, L.R. DAG NO. 475, 481, 487, 488, 490, 493 TO 505, 506(P), 507(P), 508 TO 510, 511(P), 514(P), 664(P), 667(P), 668(P), 669(P), 691, 694(P), 695(P), 701 TO 704, 710 TO 719, 723, 724, 725, 726, 727, 728, 729(P), 730 TO 732, 735, 740(P), 743, 744, 2465, L.R. KHATAN NO. 2341, 2355, 2357, 2358, 2368, 2369, 2409 TO 2420, 2423 TO 2428, 2455 TO 2462, 2464 TO 2467, 2481 TO 2487, 2529 TO 2532, 2534 TO 2536, 2574 TO 2576 AT MOJIA - JUMRAKHALI, I.E. NO. - 06, P.S. SONARPUR, WARD NO. 27, DIST. - RAJPUR, SONARPUR MUNICIPALITY.

ARCHITECTS
AGRAWAL & AGRAWAL
 Office No. 20, 21, 22, 23, 24, 25, 26, 27, 28, 29, 30, 31, 32, 33, 34, 35, 36, 37, 38, 39, 40, 41, 42, 43, 44, 45, 46, 47, 48, 49, 50, 51, 52, 53, 54, 55, 56, 57, 58, 59, 60, 61, 62, 63, 64, 65, 66, 67, 68, 69, 70, 71, 72, 73, 74, 75, 76, 77, 78, 79, 80, 81, 82, 83, 84, 85, 86, 87, 88, 89, 90, 91, 92, 93, 94, 95, 96, 97, 98, 99, 100

SCALE	DATE	DEALT	CHECKED
1:50	17.06.17	ANSHUJAMANGU	SURVIVA



Checked by *Signature*
 (Seal)
 Local Office Engineer-in-charge
 RAJPUR SONARPUR MUNICIPALITY

APPROVED

Plan No. 177/Rev/05/27/87 Dated 22/09/17

Valid upto 22/09/22

Signature

Partha Gupta
 Municipal Engineer

Signature

Dr. Rajib Das
 Chairman

RAJ P. SONARPUR MUNICIPALITY

FOR OFFICE USE