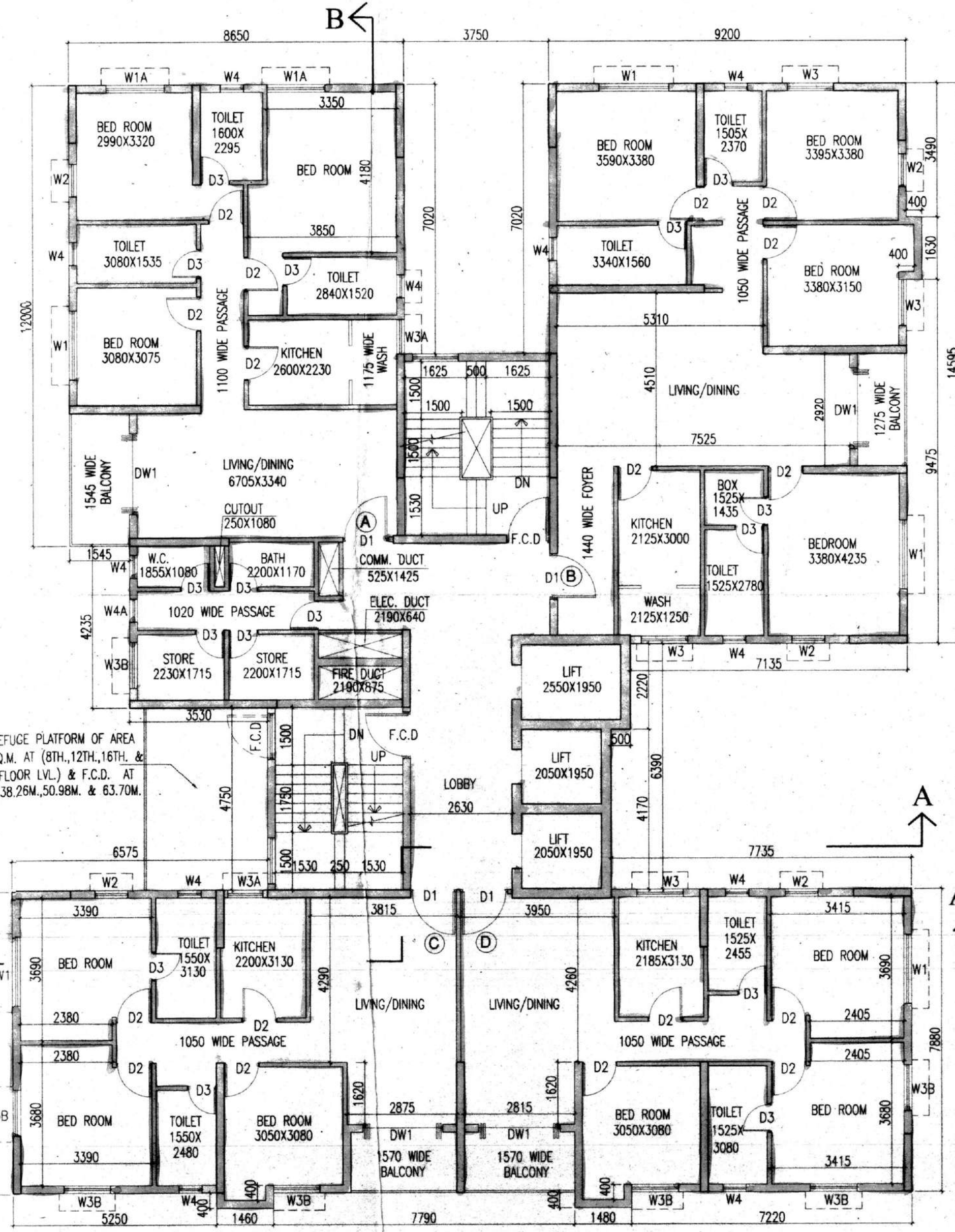
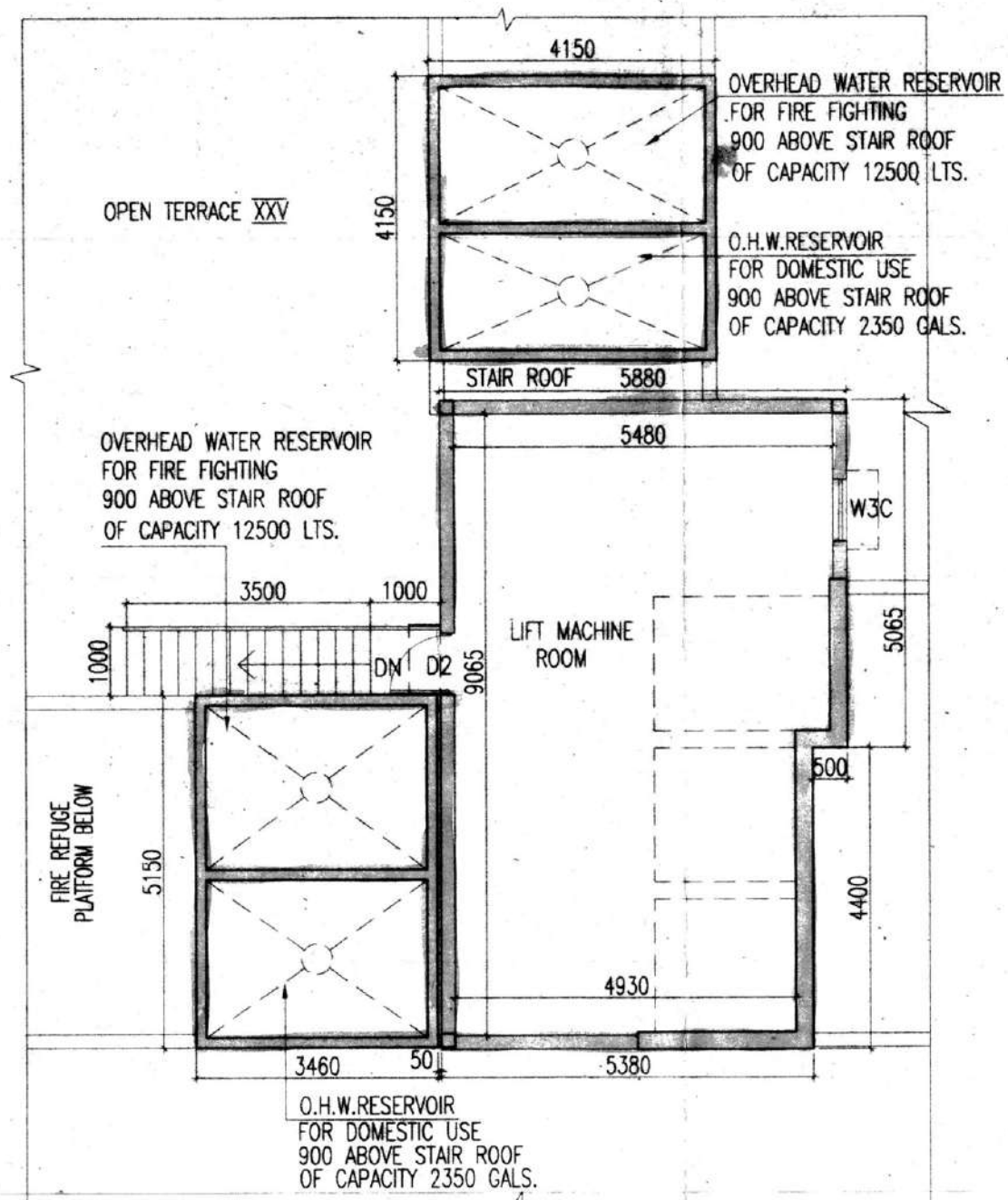


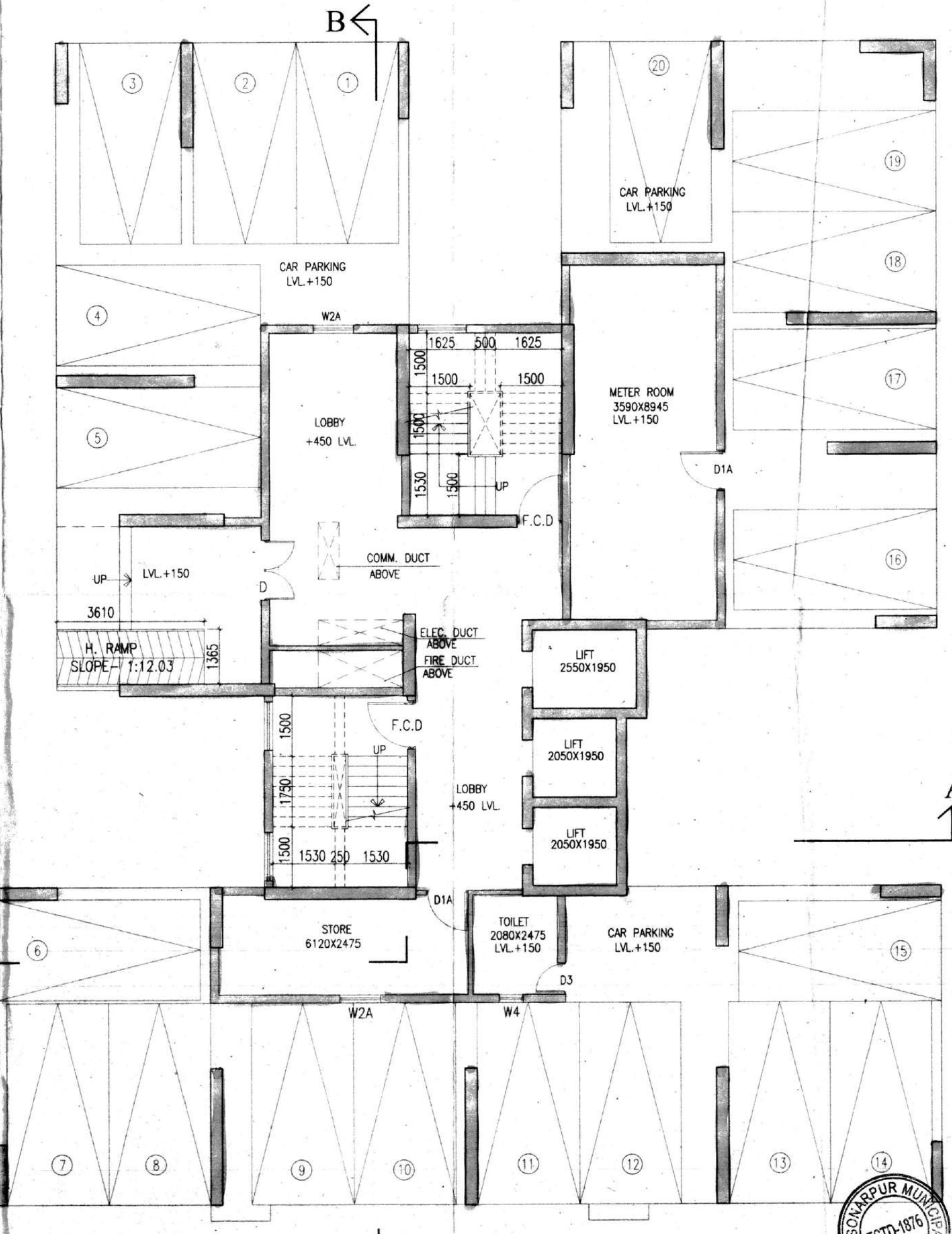
ROOF PLAN



TYP. FLOOR PLAN(1ST. TO 24TH.)



PART PLAN OF LIFT MACHINE ROOM



GROUND FLOOR PLAN

SCHEDULE OF DOORS & WINDOWS

MKG.	SILL.	*INTEL.	SIZE
F.C.D	-	2150	1100X2150
D	-	2150	1500X2150
D1	-	2150	1200X2150
D2	-	2150	900X2150
D3	-	2150	750X2150
D4	-	2150	1000X2150
D5	-	2150	1800X2150
DW1	-	2150	2100X2150
W1	350	2150	1800X1800
W1A	350	2150	1500X1800
W2	350	2150	850X1800
W2A	950	2150	1000X1200
W3	1050	2150	1200X1100
W3A	1050	2150	900X1100
W3B	950	2150	1200X1200
W3C	950	2150	900X1200
W4	1250	2150	600X900
W4A	950	2150	600X1200
C.G.			AS PER ELEVATION

CERTIFICATE OF OWNER

CERTIFIED THAT I HAVE GONE THROUGH THE BUILDING RULES FOR RAJPUR-SONARPUR MUNICIPALITY AND ALSO UNDER TAKE TO ABIDE BY THOSE RULES DURING AND AFTER CONSTRUCTION OF THE BUILDING.

NAME OF OWNER:

1. KYAL ENCLAVE PVT. LTD.
2. AARAV CONCLAVE PVT. LTD.
3. AARAV DEVELOPERS PVT. LTD.
4. LINGRAJ PROPERTIES PVT. LTD.
5. WALL STREET HOUSING PVT. LTD.
6. WALL STREET PLAZA PVT. LTD.
7. WONDERFUL COMPLEX PVT. LTD.
8. WONDERFUL BUILDCON PVT. LTD.
9. IMPERIAL PLAZA PVT. LTD.
10. EMPIRE HIGHRISE PVT. LTD.
11. EVERGROW DEVELOPERS PVT. LTD.
12. EXCELLENT CONCLAVE PVT. LTD.
13. WELCOME TOWER PVT. LTD.
14. WELCOME COMPLEX PVT. LTD.
15. IMPERIAL RESIDENCY PVT. LTD.
16. WINSOME PROJECTS PVT. LTD.
17. WINSOME TOWER PVT. LTD.
18. WINSOME ENCLAVE PVT. LTD.
19. WINSOME PLAZA PVT. LTD.
20. INDRALOK COMPLEX PVT. LTD.
21. WELLBUILD ENCLAVE PVT. LTD.
22. UTILITY COMPLEX PVT. LTD.
23. INTERCITY PROJECTS PVT. LTD.
24. EKDANT PROJECTS PVT. LTD.
25. INOX HOUSING PVT. LTD.
26. EFFORT DEVELOPERS PVT. LTD.
27. ENABLE ESTATE PVT. LTD.
28. ENDORSE REAL ESTATE PVT. LTD.
29. INDRALOK CONSTRUCTION PVT. LTD.
30. ELASTIC BUILDERS PVT. LTD.
31. PRATITI CHOPRA
32. ELECT. CONSTRUCTION PVT. LTD.
33. ANITA AGARWAL
34. MADHU DUGAR
35. KIRAN AGARWAL
36. MANISHA AGARWAL
37. WELCOME INFRAPROJECTS PVT. LTD.
38. INSTILL DEVELOPERS PVT. LTD.
39. WRAP REAL ESTATE PVT. LTD.
40. INSIST CONSTRUCTION PVT. LTD.
41. INTENT CONCLAVE PVT. LTD.
42. INTENT BUILDERS PVT. LTD.
43. INTUTION DEVELOPERS PVT. LTD.
44. WOODLAND PROCON PVT. LTD.
45. WAKFUL CONSTRUCTION PVT. LTD.
46. WELSCOME CONCLAVE PVT. LTD.
47. ISOLATE REAL ESTATE PVT. LTD.
48. ELECT REAL ESTATE PVT. LTD.
49. INDEK DEVELOPERS PVT. LTD.
50. ELITE DEVCON PVT. LTD.
51. WEIGHTY DEVELOPERS PVT. LTD.
52. INCREDIBLE BUILDERS PVT. LTD.
53. ELIGIBLE PROCON PVT. LTD.
54. IDEAL CONCLAVE PVT. LTD.
55. RAVI DUGAR
56. P.S. SRIJAN HEIGHT DEVELOPERS
57. MANYA AGENCIES PVT. LTD.
58. SUVRIDHI STOKIST PVT. LTD.
59. RISHI ENCLAVE PVT. LTD.
60. RISHI COMPLEX PVT. LTD.

LINGRAJ PROPERTIES PVT. LTD. & OTHERS

S. P. Singh
Authorized Signatory

SIGNATURE OF OWNER

CERTIFICATE OF STRUCTURAL STABILITY

WE HEREBY CERTIFIED THAT THE FOUNDATION AND THE SUPERSTRUCTURE OF THE BUILDING PROPOSED FOR CONSTRUCTION ON L.R. DAG NO. 475,481,487,488,490,493 TO 505,506(P),507(P),508 TO 510, 511(P),514(P),664(P),688(P),689(P),690,691,693,694(P),695(P),701 TO 704,710 TO 719,723,724,725,726,727,728,729(P),730 TO 732,735,742(P),743,741/2465, L.R. KHATAN NO.-2341,2355,2357,2358,2368,2369,2409 TO 2420,2423 TO 2428,2455 TO 2462,2464 TO 2467,2481 TO 2487,2528 TO 2532,2534 TO 2536,2574 TO 2576 AT MOUJA-KUMRAKHALLI, I.L. NO.-48, P.S.-SONARPUR, WARD NO.27, HAVE BEEN SO DESIGNED BY US WILL MAKE SUCH FOUNDATION & SUPER STRUCTURE SAFE IN ALL RESPECTS INCLUDING THE CONSIDERATION OF BEARING CAPACITY OF SOIL E.T.C.

ALOK ROY
Enlisted Geotechnical Engineer
Rajpur-Sonarpur Municipality
No.- 008 / G.T. Eng. Class-I

SIGN OF GEO-TECHNICAL ENGG.

S. H. Parekh
SANJIV PAREKH
M.E. (STRUCT. & E. CONST. ENGG.)
B. C. E., FIE-(F-018202-4)
E. S. E. NO. 018, RAJPUR
SONARPUR MUNICIPALITY

SIGN OF STRUCTURAL ENGG.

S. J. Chatterjee
SANJIB CHATTERJEE
BSC, BCE, FIE-(F-1101-5)
CHARTERED ENGINEER
E.S.R. No.- 101, RAJPUR
SONARPUR MUNICIPALITY.

SIGN OF STRUCTURAL REVIEWER

JAY PRAKASH AGRAWAL
561/RJP50N/EBA/03-04

SIGNATURE OF ARCHITECT

TITLE:
GROUND FLOOR PLAN, TYPICAL FLOOR PLAN (1ST. TO 24TH.), ROOF PLAN & PART PLAN OF LIFT MACHINE ROOM (BLOCK-1)

PROJECT:
REVISED PLAN OF (B-G-XVIII), (G-XXIV) & (B-G-XXIV) STORED RESIDENTIAL COMPLEX, AT MOUJA-KUMRAKHALLI, I.L. NO-48, L.R. DAG NO. 475,481,487,488,490,493 TO 505,506(P),507(P),508 TO 510, 511(P),514(P), 664(P),688(P),689(P),690,691,693,694(P),695(P),701 TO 704,710 TO 719,723,724,725,726,727,728,729(P),730 TO 732,735,742(P),743,741/2465 L.R. KHATAN NO.-2341,2355,2357,2358,2368,2369,2409 TO 2420,2423 TO 2428,2455 TO 2462,2464 TO 2467,2481 TO 2487,2528 TO 2532,2534 TO 2536,2574 TO 2576 P.S.-SONARPUR, WARD NO.27, DIST.-24 PGS. (SOUTH) UNDER- RAJPUR SONARPUR MUNICIPALITY.

ARCHITECTS
AGRAWAL & AGRAWAL
Worship House: 2/5 Sevak Baidya Street - kol-700 029
www.agrawalarchitects.in Phone-4060-4100-2

SCALE	DATE	DEALT	(CHECKER)
1:100	17.06.17.	UMANG KALYANI	SUPRIYA

APPROVED
Plan No. 177/Rev/03/27/18/22 dated 22/09/22
Valid Upto 22/09/22

15/2/17

22/9/18

Checked by
S. P. Singh
Local Body Engineer-in-Charge
RAJPUR-SONARPUR MUNICIPALITY

21/01/2017 FOR OFFICE USE.

Parta Gupta
Municipal Engineer
RAJPUR-SONARPUR MUNICIPALITY

Dr. Pallab Das
Chairman
RAJPUR-SONARPUR MUNICIPALITY