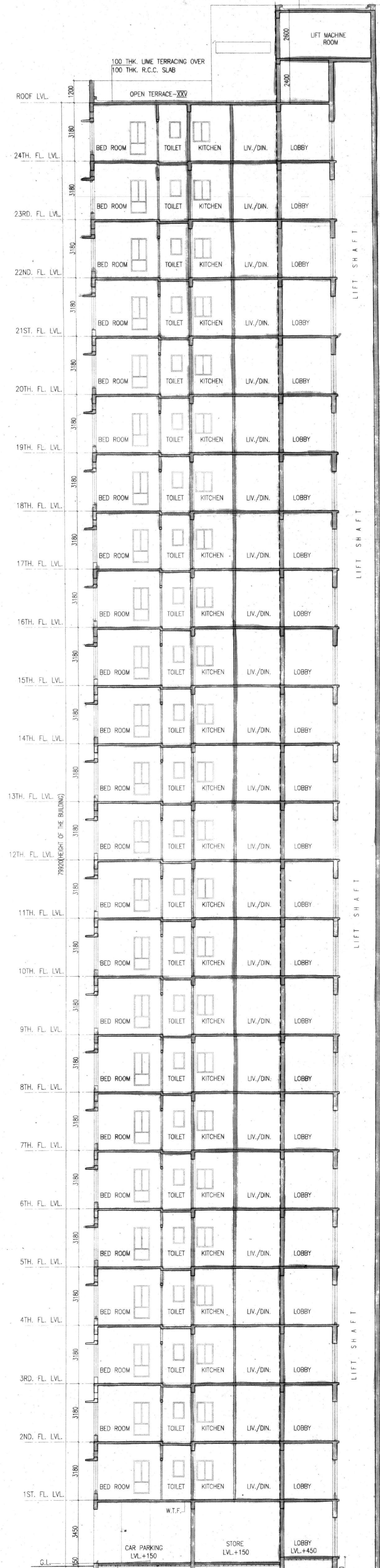
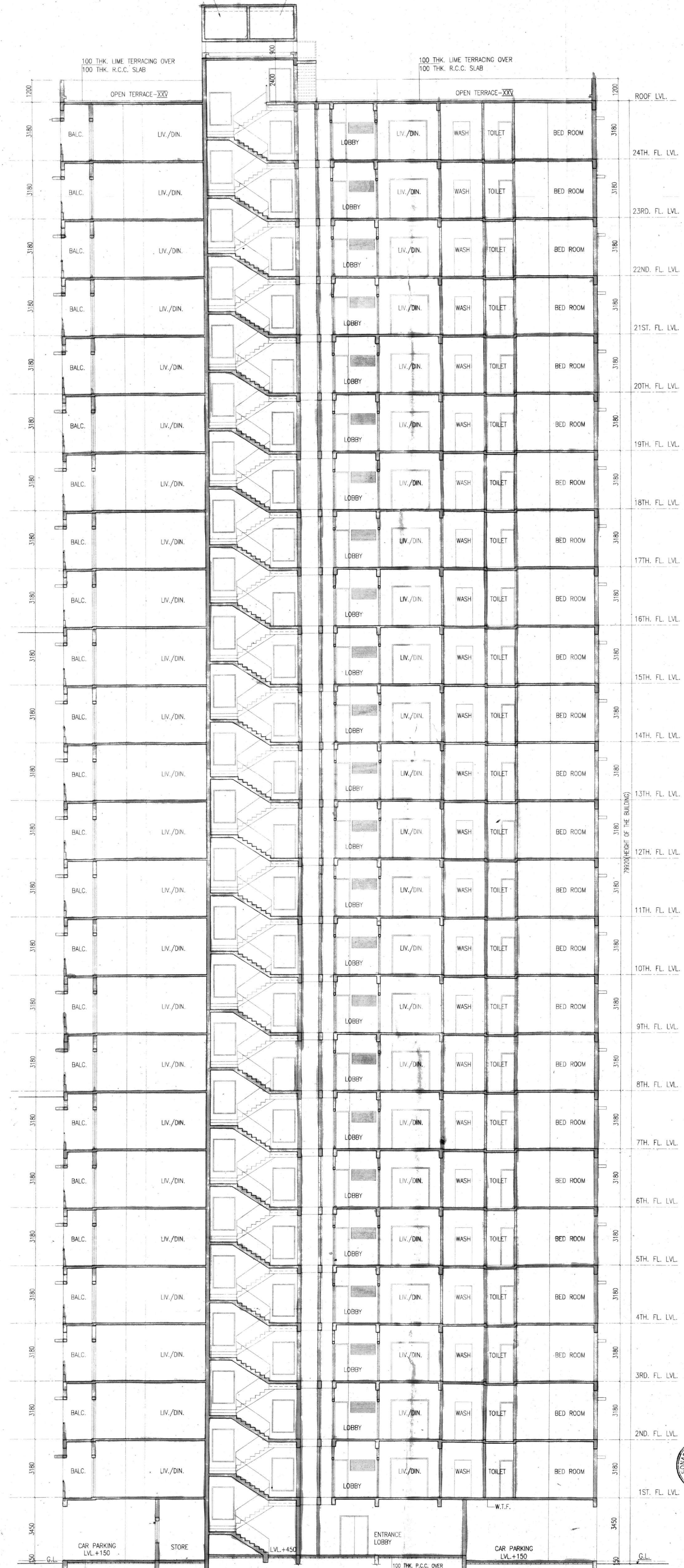


FRONT ELEVATION



SECTION AT AA



SECTION AT BB

- NAME OF OWNER
1. KYAL ENCLAVE PVT. LTD.
  2. AARAV CONCLAVE PVT. LTD.
  3. AARAV DEVELOPERS PVT. LTD.
  4. LINGRAI PROPERTIES PVT. LTD.
  5. WALL STREET HOUSING PVT. LTD.
  6. WALL STREET PLAZA PVT. LTD.
  7. WONDERFUL COMPLEX PVT. LTD.
  8. WONDERFUL BUILDCON PVT. LTD.
  9. IMPERIAL PLAZA PVT. LTD.
  10. EMPIRE HIGHRISE PVT. LTD.
  11. EVERGLOW DEVELOPERS PVT. LTD.
  12. EXCELLENT CONCLAVE PVT. LTD.
  13. WELCOME TOWER PVT. LTD.
  14. WELCOME COMPLEX PVT. LTD.
  15. IMPERIAL RESIDENCY PVT. LTD.
  16. WINDSOME PROPERTIES PVT. LTD.
  17. WINDSOME TOWER PVT. LTD.
  18. WINDSOME ENCLAVE PVT. LTD.
  19. WINDSOME PLAZA PVT. LTD.
  20. INDRALOK COMPLEX PVT. LTD.
  21. WELTBUILD ENCLAVE PVT. LTD.
  22. UTILITY COMPLEX PVT. LTD.
  23. INTERCITY PROJECTS PVT. LTD.
  24. EKIDANT PROJECTS PVT. LTD.
  25. INDIA BUSINESS PVT. LTD.
  26. EFFORT DEVELOPERS PVT. LTD.
  27. ENABLE ESTATE PVT. LTD.
  28. ENDORSE REAL ESTATE PVT. LTD.
  29. INDRALOK CONSTRUCTION PVT. LTD.
  30. ELASTIC BUILDERS PVT. LTD.
  31. PRATHI CHOPRA
  32. ELEC.T. CONSTRUCTION PVT. LTD.
  33. ANITA AGARWAL
  34. MADHU DUGAR
  35. KIRAN AGARWAL
  36. MANISHA AGARWAL
  37. WELCOME INFRAPROJECTS PVT. LTD.
  38. INSTILL DEVELOPERS PVT. LTD.
  39. WRAP REAL ESTATE PVT. LTD.
  40. INSIST CONSTRUCTION PVT. LTD.
  41. INTENT CONCLAVE PVT. LTD.
  42. INTENT BUILDERS PVT. LTD.
  43. INTUITION DEVELOPERS PVT. LTD.
  44. WOODLAND PROCON PVT. LTD.
  45. WAKEFUL CONSTRUCTION PVT. LTD.
  46. WELLSOME CONCLAVE PVT. LTD.
  47. ISOLATE REAL ESTATE PVT. LTD.
  48. ELIEST REAL ESTATE PVT. LTD.
  49. INDEX DEVELOPERS PVT. LTD.
  50. ELITE DEVCON PVT. LTD.
  51. WRIGHTY DEVELOPERS PVT. LTD.
  52. INCREDIBLE BUILDERS PVT. LTD.
  53. ELIGIBLE PROCON PVT. LTD.
  54. IDEAL CONCLAVE PVT. LTD.
  55. RAVI DUGAR
  56. P.S. SRIJAN HEIGHT DEVELOPERS
  57. MANYA AGENCIES PVT. LTD.
  58. SUREDDHI STOKIST PVT. LTD.
  59. RISHI ENCLAVE PVT. LTD.
  60. RISHI COMPLEX PVT. LTD.

LINGRAI PROPERTIES PVT. LTD. & OTHERS  
*Saham*  
 Authorised Signatory

SIGNATURE OF OWNER

CERTIFICATE OF STRUCTURAL STABILITY

WE HEREBY CERTIFY THAT THE FOUNDATION AND THE SUPERSTRUCTURE OF THE BUILDING PROPOSED FOR CONSTRUCTION ON L.R. DIAG NO. 47481 (GT. 484.88.485 TO 585.596) 570p.508 TO 510, 511P.514P.664P.688P.689P.690P.691, 693, 694P.695P.701 TO 704.710 TO 716.723, 724.725, 726.727, 728.729, 730 TO 732.733, 742P.743, 741.745, 746, 747, 748, 749, 750, 751, 752, 753, 754, 755, 756, 757, 758, 759, 760, 761, 762, 763, 764, 765, 766, 767, 768, 769, 770, 771, 772, 773, 774, 775, 776, 777, 778, 779, 780, 781, 782, 783, 784, 785, 786, 787, 788, 789, 790, 791, 792, 793, 794, 795, 796, 797, 798, 799, 800, 801, 802, 803, 804, 805, 806, 807, 808, 809, 810, 811, 812, 813, 814, 815, 816, 817, 818, 819, 820, 821, 822, 823, 824, 825, 826, 827, 828, 829, 830, 831, 832, 833, 834, 835, 836, 837, 838, 839, 840, 841, 842, 843, 844, 845, 846, 847, 848, 849, 850, 851, 852, 853, 854, 855, 856, 857, 858, 859, 860, 861, 862, 863, 864, 865, 866, 867, 868, 869, 870, 871, 872, 873, 874, 875, 876, 877, 878, 879, 880, 881, 882, 883, 884, 885, 886, 887, 888, 889, 890, 891, 892, 893, 894, 895, 896, 897, 898, 899, 900, 901, 902, 903, 904, 905, 906, 907, 908, 909, 910, 911, 912, 913, 914, 915, 916, 917, 918, 919, 920, 921, 922, 923, 924, 925, 926, 927, 928, 929, 930, 931, 932, 933, 934, 935, 936, 937, 938, 939, 940, 941, 942, 943, 944, 945, 946, 947, 948, 949, 950, 951, 952, 953, 954, 955, 956, 957, 958, 959, 960, 961, 962, 963, 964, 965, 966, 967, 968, 969, 970, 971, 972, 973, 974, 975, 976, 977, 978, 979, 980, 981, 982, 983, 984, 985, 986, 987, 988, 989, 990, 991, 992, 993, 994, 995, 996, 997, 998, 999, 1000.

*ALOK ROY*  
 Registered Geotechnical Engineer  
 Rajapur Sonarpur Municipality  
 Reg-098 / G.T. Engg. Class-1

SIGN. OF GEO-TECHNICAL ENGG.

*SANJIV J. PAREKH*  
 SANJIV J. PAREKH  
 ALL INDIA TEAM, CONST. ENGA.  
 B.C.E. (FIE-4-8152-4)  
 E.S.R. NO. 018, RAJAPUR  
 SONARPUR MUNICIPALITY  
 SIGN. OF STRUCTURAL ENGG.

*SANKU G.*  
 SANKU G.  
 BSC, BCE, FIE (F-3-3)  
 CHARTERED ENGINEER  
 E.S.R. No. 101, RAJAPUR  
 SONARPUR MUNICIPALITY  
 SIGN. OF STRUCTURAL REVIEWER

SIGN. OF STRUCTURAL REVIEWER

*JAY PRAKASH AGRAWAL*  
 JAY PRAKASH AGRAWAL  
 551/RJPSON/EA/03-04  
 SIGNATURE OF ARCHITECT

TITLE: FRONT ELEVATION, SECTION AT -A-A & 'B-B' (BLOCK-1)

PROJECT: REVISED PLAN OF 0-G+0.100 (0-000) & 0-0.000 (STORED) RESIDENTIAL COMPLEX AT MOUZA KUMRAKHALI, NO-48, L.R. DIAG NO. 47481 (GT. 484.88.485 TO 585.596) 570p.508 TO 510, 511P.514P.664P.688P.689P.690P.691, 693, 694P.695P.701 TO 704.710 TO 716.723, 724.725, 726.727, 728.729, 730 TO 732.733, 742P.743, 741.745, 746, 747, 748, 749, 750, 751, 752, 753, 754, 755, 756, 757, 758, 759, 760, 761, 762, 763, 764, 765, 766, 767, 768, 769, 770, 771, 772, 773, 774, 775, 776, 777, 778, 779, 780, 781, 782, 783, 784, 785, 786, 787, 788, 789, 790, 791, 792, 793, 794, 795, 796, 797, 798, 799, 800, 801, 802, 803, 804, 805, 806, 807, 808, 809, 810, 811, 812, 813, 814, 815, 816, 817, 818, 819, 820, 821, 822, 823, 824, 825, 826, 827, 828, 829, 830, 831, 832, 833, 834, 835, 836, 837, 838, 839, 840, 841, 842, 843, 844, 845, 846, 847, 848, 849, 850, 851, 852, 853, 854, 855, 856, 857, 858, 859, 860, 861, 862, 863, 864, 865, 866, 867, 868, 869, 870, 871, 872, 873, 874, 875, 876, 877, 878, 879, 880, 881, 882, 883, 884, 885, 886, 887, 888, 889, 890, 891, 892, 893, 894, 895, 896, 897, 898, 899, 900, 901, 902, 903, 904, 905, 906, 907, 908, 909, 910, 911, 912, 913, 914, 915, 916, 917, 918, 919, 920, 921, 922, 923, 924, 925, 926, 927, 928, 929, 930, 931, 932, 933, 934, 935, 936, 937, 938, 939, 940, 941, 942, 943, 944, 945, 946, 947, 948, 949, 950, 951, 952, 953, 954, 955, 956, 957, 958, 959, 960, 961, 962, 963, 964, 965, 966, 967, 968, 969, 970, 971, 972, 973, 974, 975, 976, 977, 978, 979, 980, 981, 982, 983, 984, 985, 986, 987, 988, 989, 990, 991, 992, 993, 994, 995, 996, 997, 998, 999, 1000.

ARCHITECTS

**AGRAWAL & AGRAWAL**  
 Workshop House 255 Sevak Baidya Street - 401-700 029  
 www.agrawalprojects.in Phone-4950-4100-2

SCALE: DATE: DEALT: CHECKED:  
 1:100 17.06.17. UMANGKALYANI SUPRIYA

Checked by: *Sanku G.*  
 Local Engineer  
 RAJAPUR SONARPUR MUNICIPALITY

**APPROVED**  
 Plan No. 122/Rev/03/22/2017, dated 22/09/17  
 Valid Upto 22/09/28  
 22/09/17  
 Dr. Prakash Das  
 Chairman  
 RAJAPUR SONARPUR MUNICIPALITY

FOR OFFICE USE