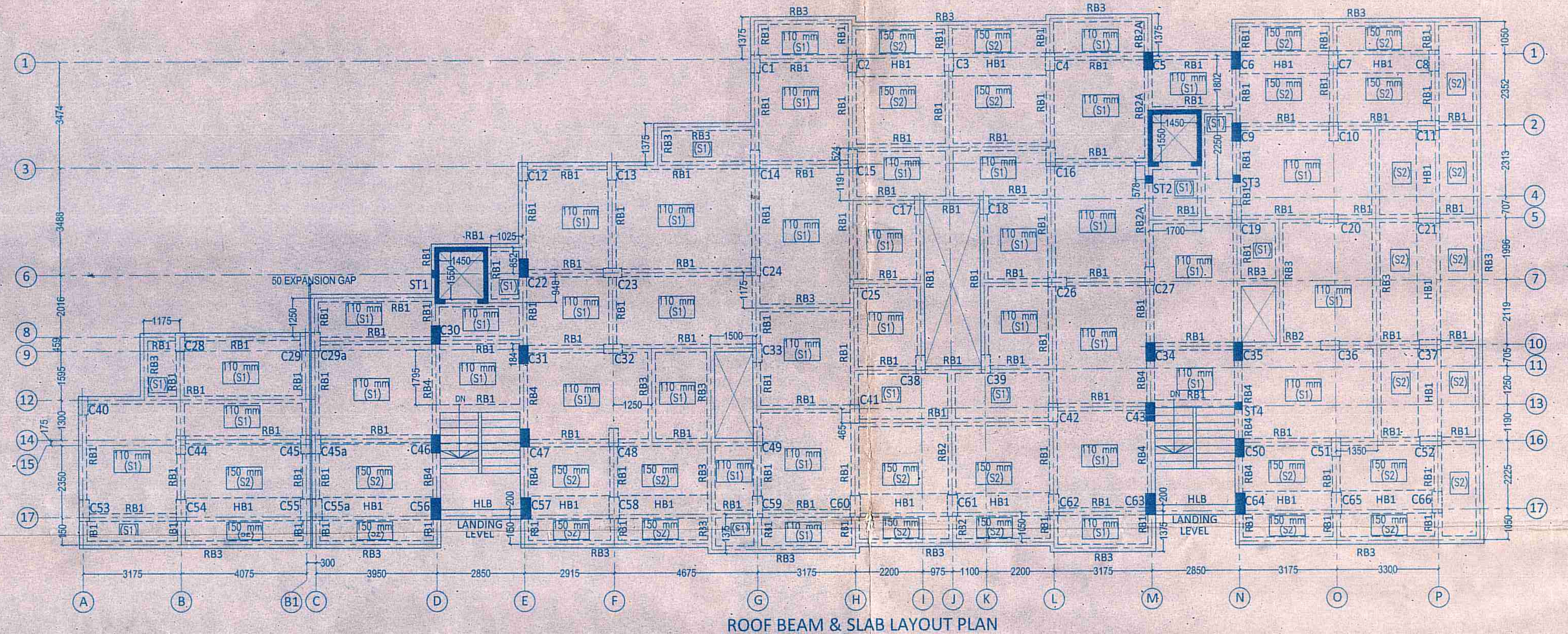
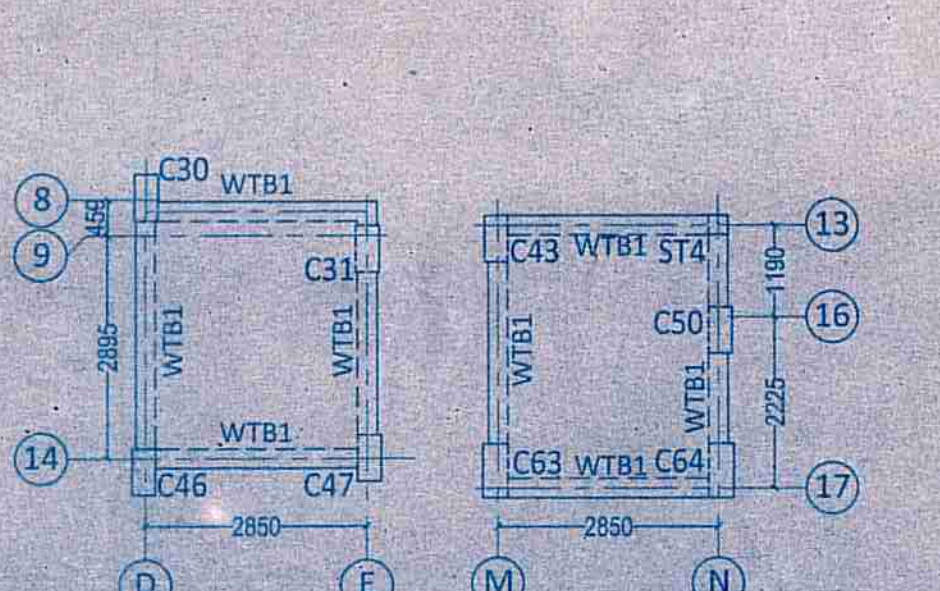


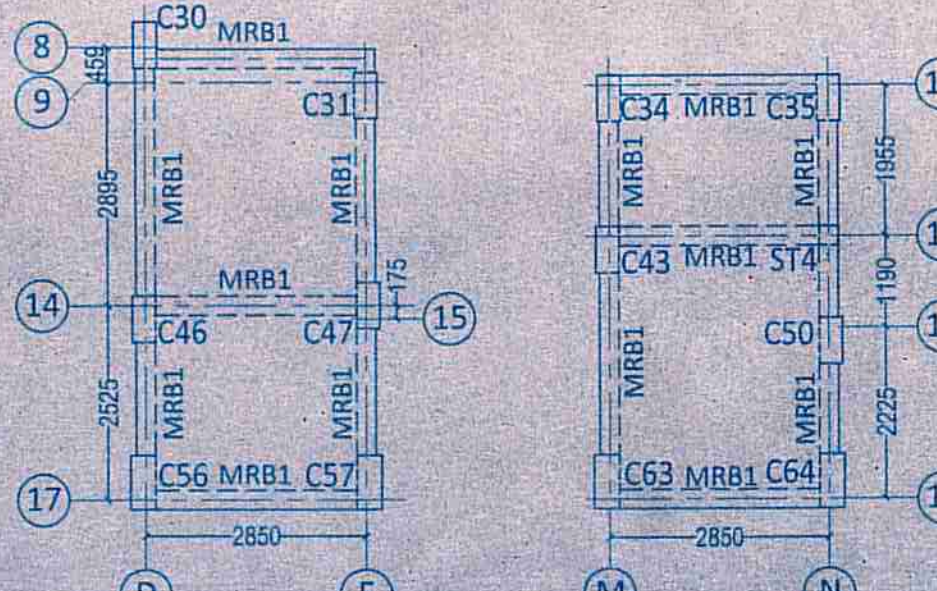
TYPICAL FLOOR (1st to 7th) BEAM & SLAB LAYOUT PLAN AT (+) 2.90; (+) 5.8; (+) 8.7; (+) 11.6; (+) 14.5; (+) 17.4; (+) 20.3 LVL. SCALE - 1 : 100



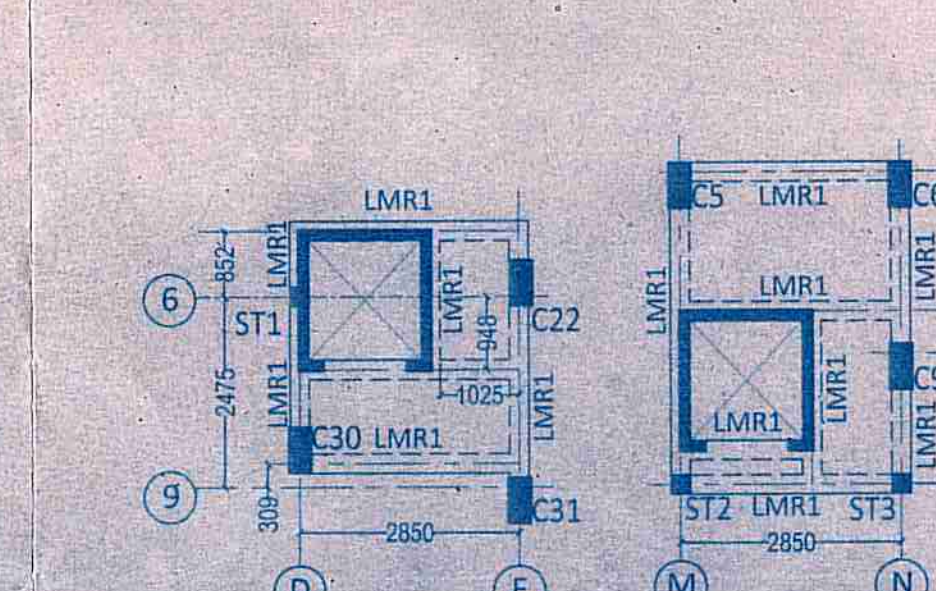
ROOF BEAM & SLAB LAYOUT PLAN AT (+) 23.20 LVL. SCALE: 1:100



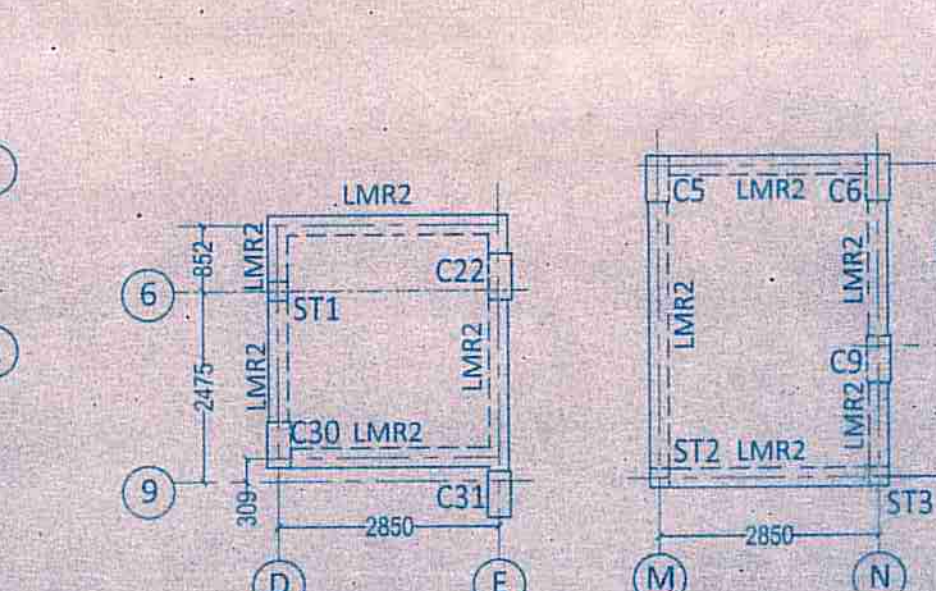
WATER TANK PLATFORM BEAM & SLAB PLAN AT (+) 26.620 LVL. ALL SLAB - 200 mm THICK. SCALE: 1:100



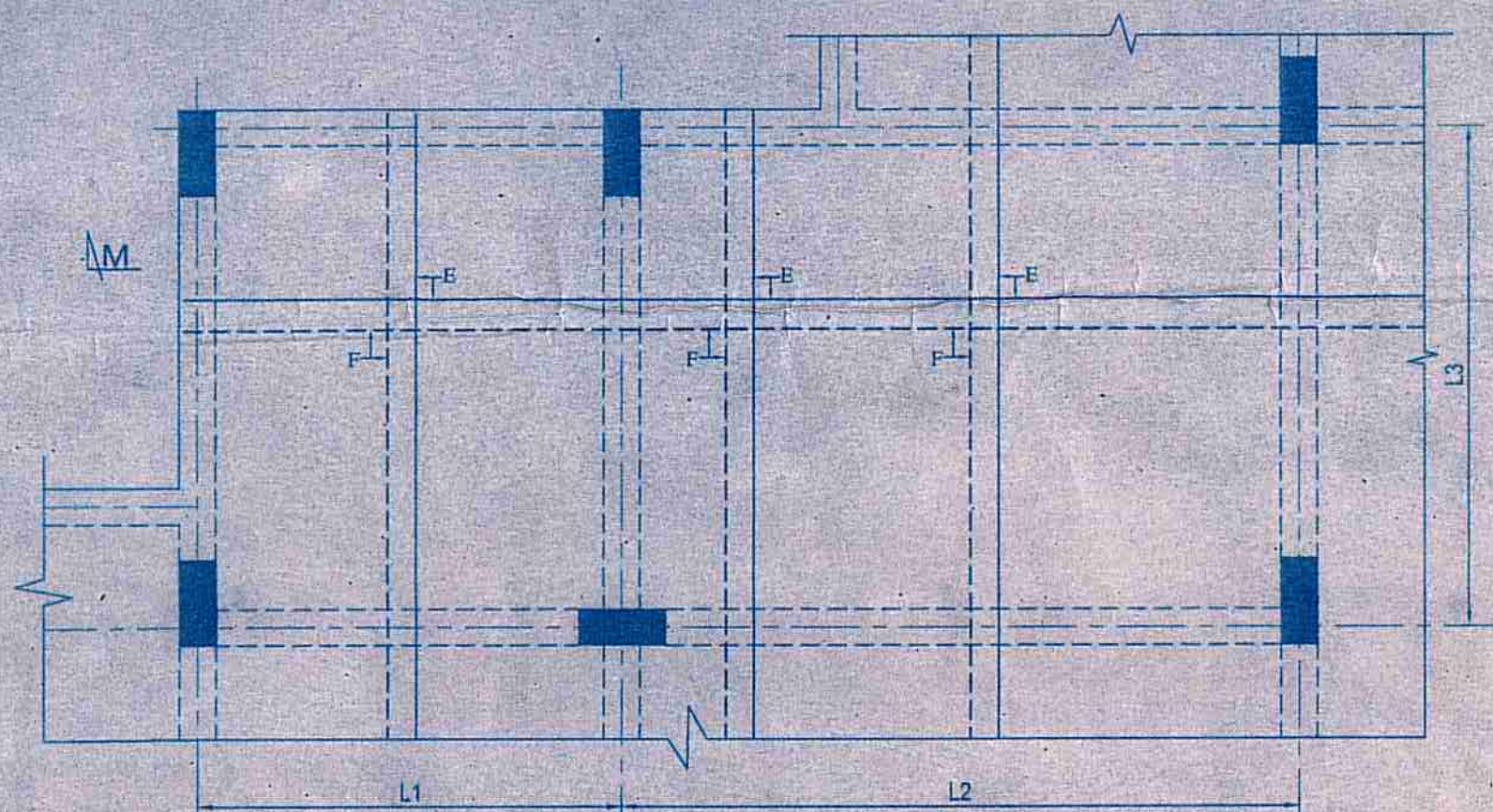
MUMTY ROOF BEAM & SLAB LAYOUT PLAN AT (+) 25.720 LVL. ALL SLAB - 110 mm THICK. SCALE: 1:100



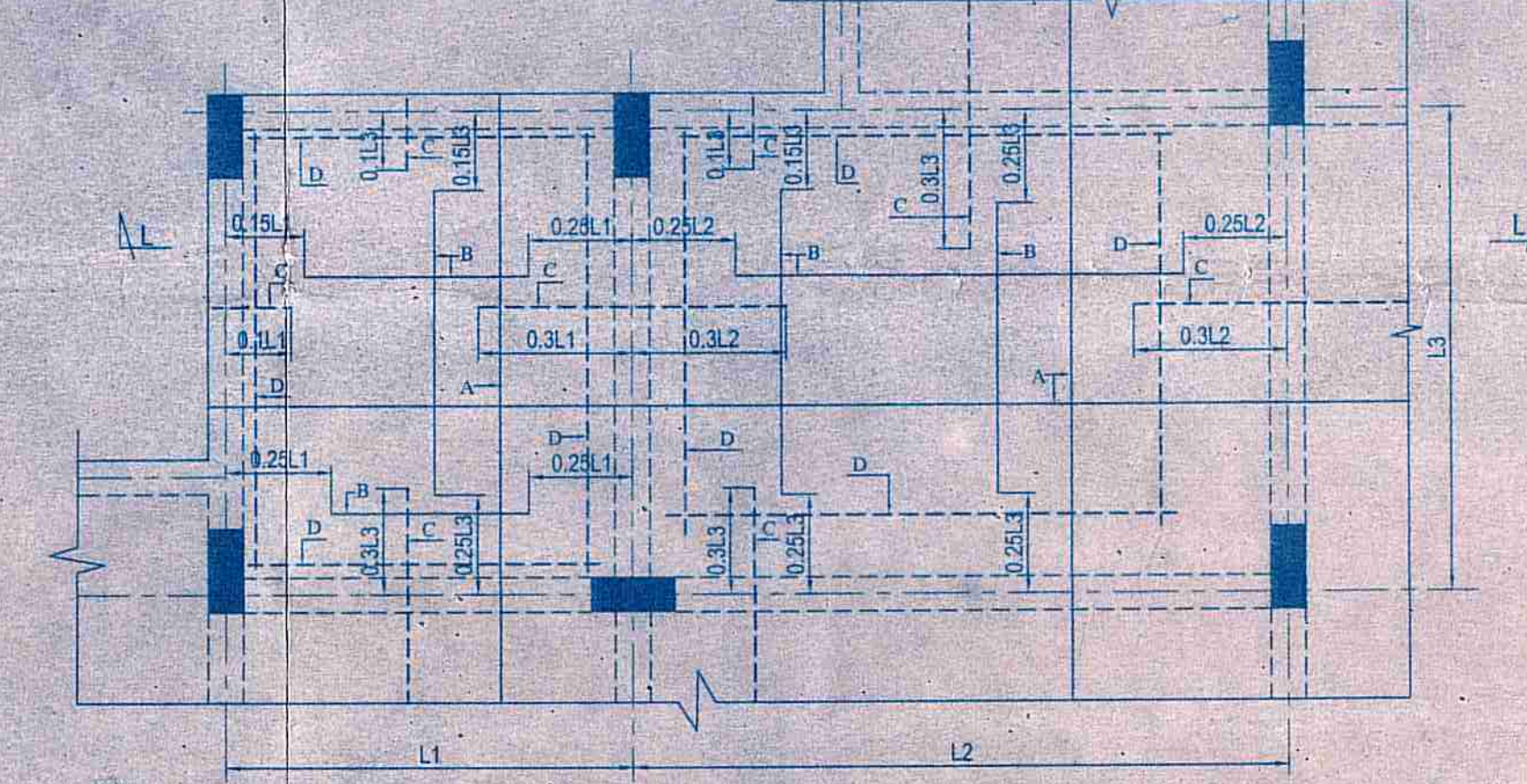
L.M.R. BOTTOM SLAB & BEAM LAYOUT PLAN AT (+) 25.060 LVL. ALL SLAB - 200 mm THICK. SCALE: 1:100



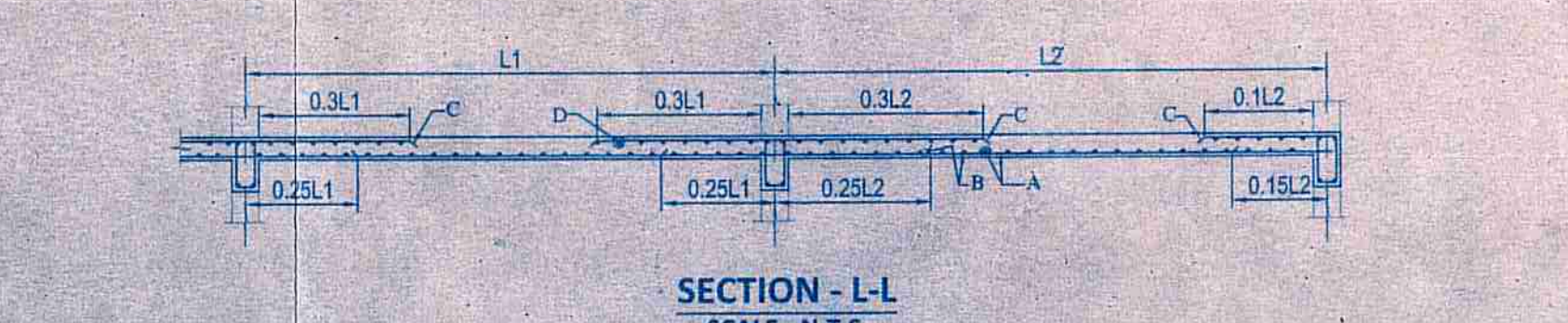
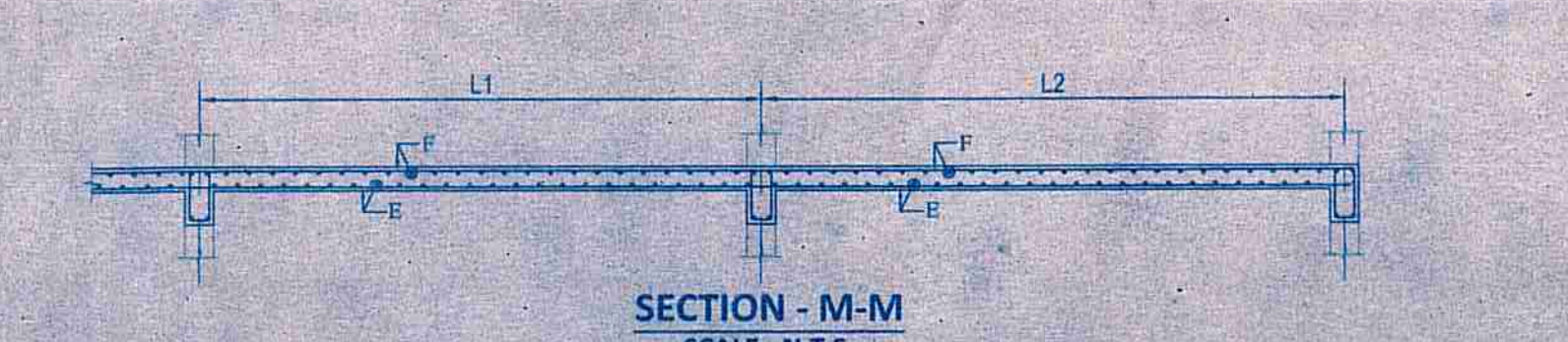
L.M.R. ROOF SLAB & BEAM LAYOUT PLAN AT (+) 27.810 LVL. ALL SLAB - 110 mm THICK. SCALE: 1:100



TYPICAL DETAILS OF SLAB REINFORCEMENT (FOR 200 THK. SLAB). SCALE - N.T.S.

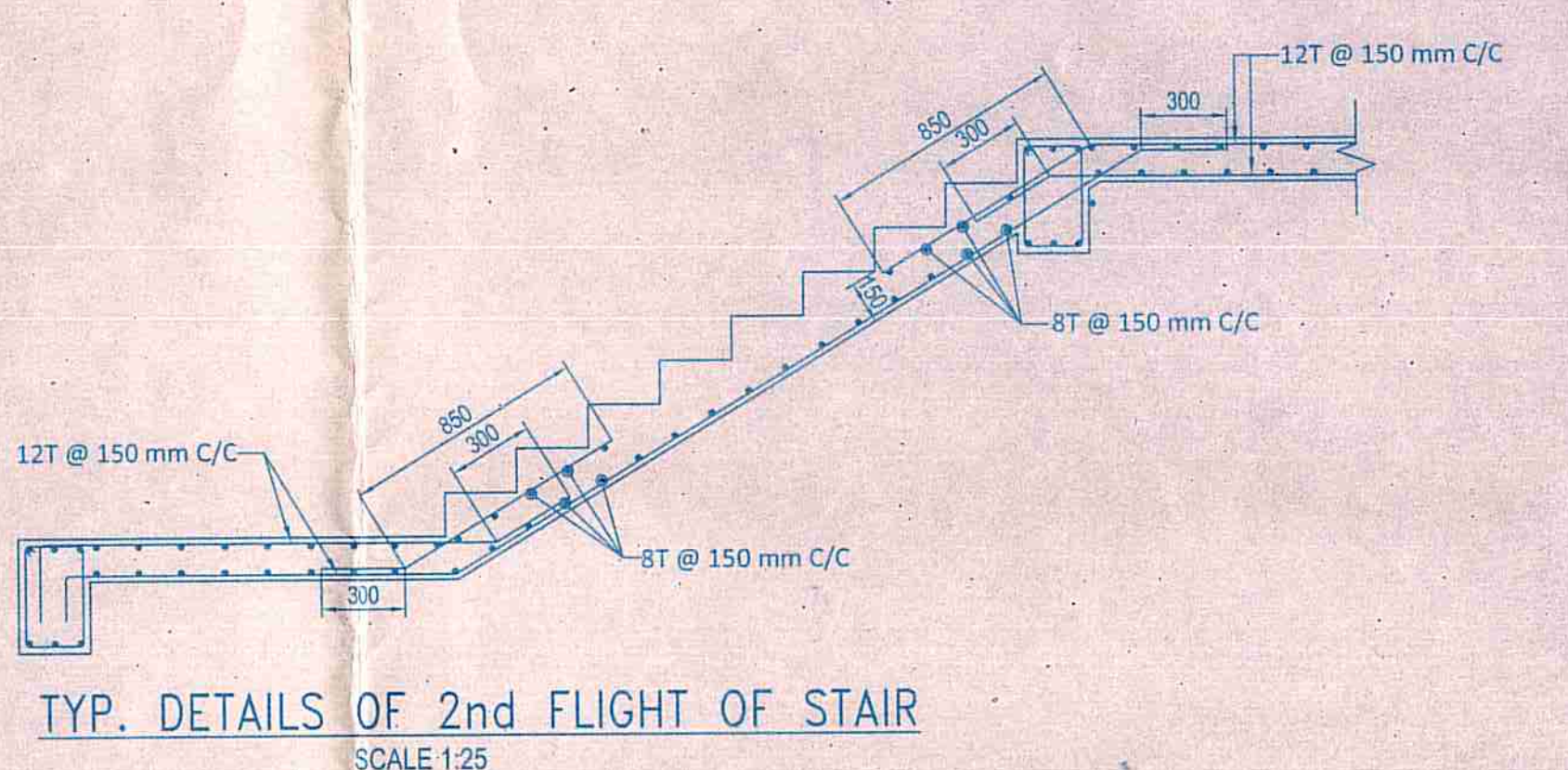


TYPICAL DETAILS OF SLAB REINFORCEMENT (FOR 110 & 135 THK. SLAB). SCALE - N.T.S.

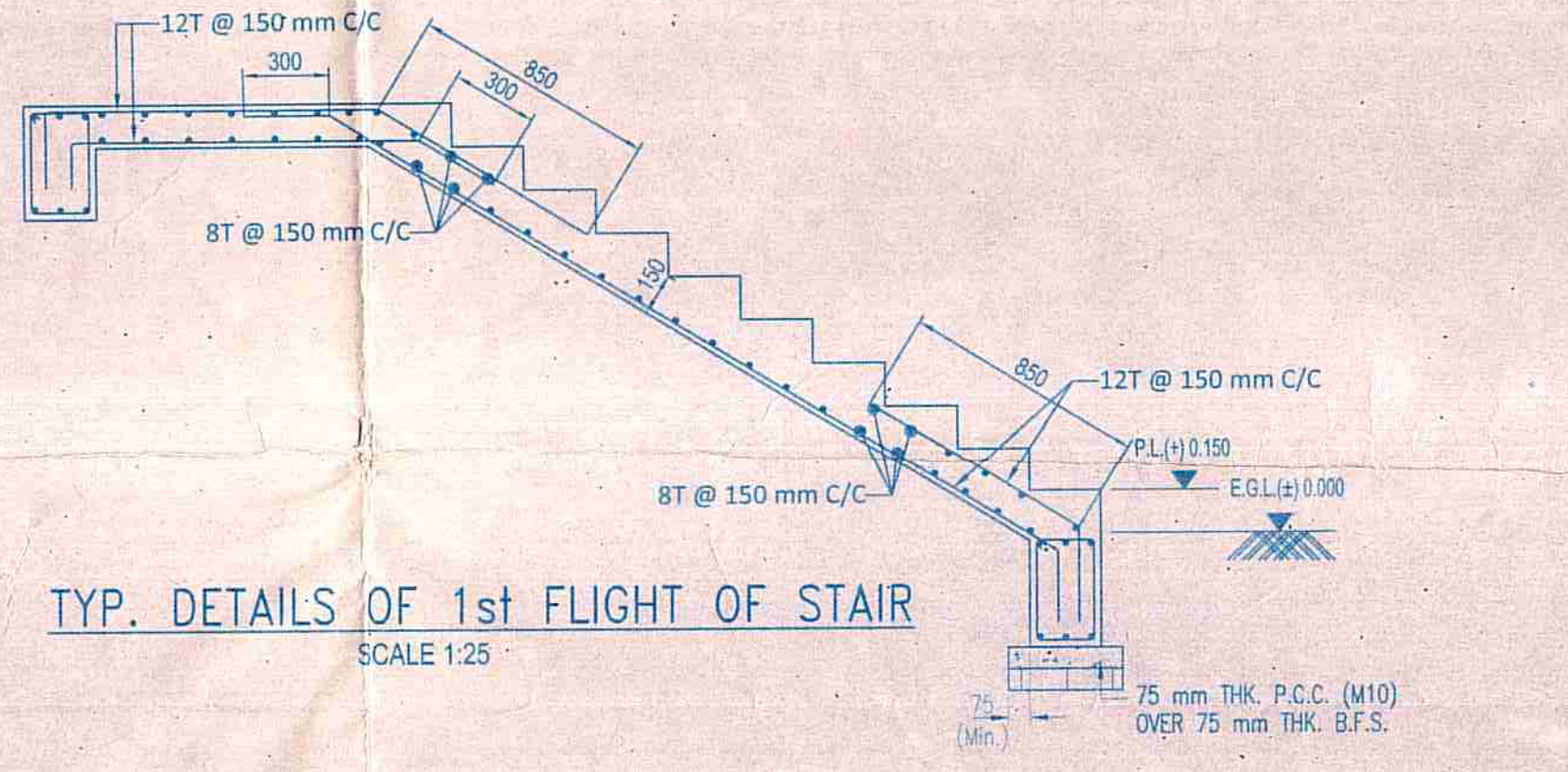


SLAB THICKNESS - 200 mm	BAR MKD.	REINFORCEMENT	POSITION
	E	10T @ 150 mm C/C (ALLTHROUGH)	BOT.
	F	10T @ 150 mm C/C (ALLTHROUGH)	TOP

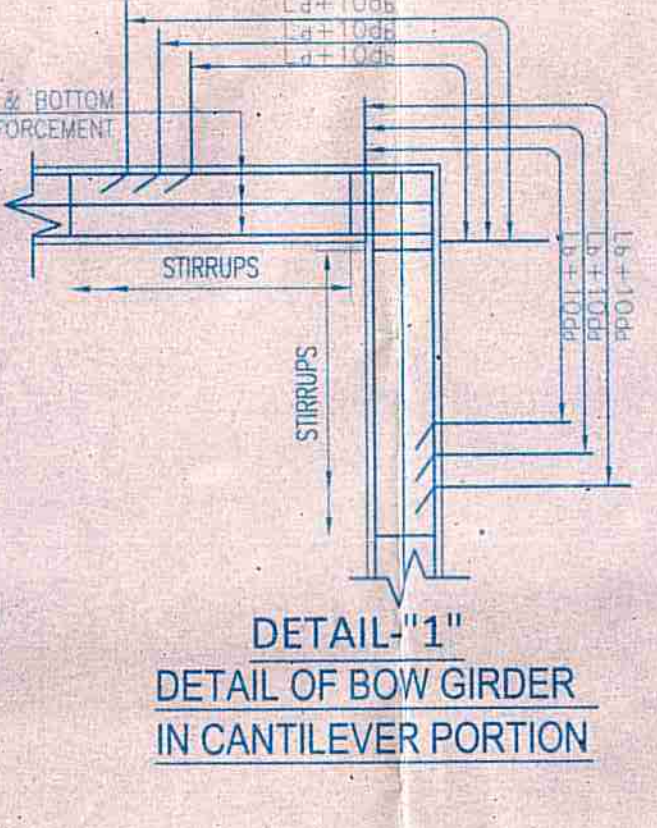
SLAB THICKNESS - 110 mm & 150mm	BAR MKD.	REINFORCEMENT	POSITION
	A	8T @ 300 mm C/C (ALLTHROUGH)	BOT.
	B	8T @ 300 mm C/C (CURTAILMENT)	BOT.
	C	8T @ 150 mm C/C (CURTAILMENT)	TOP
	D	8T @ 150 mm C/C (ALLTHROUGH)	TOP



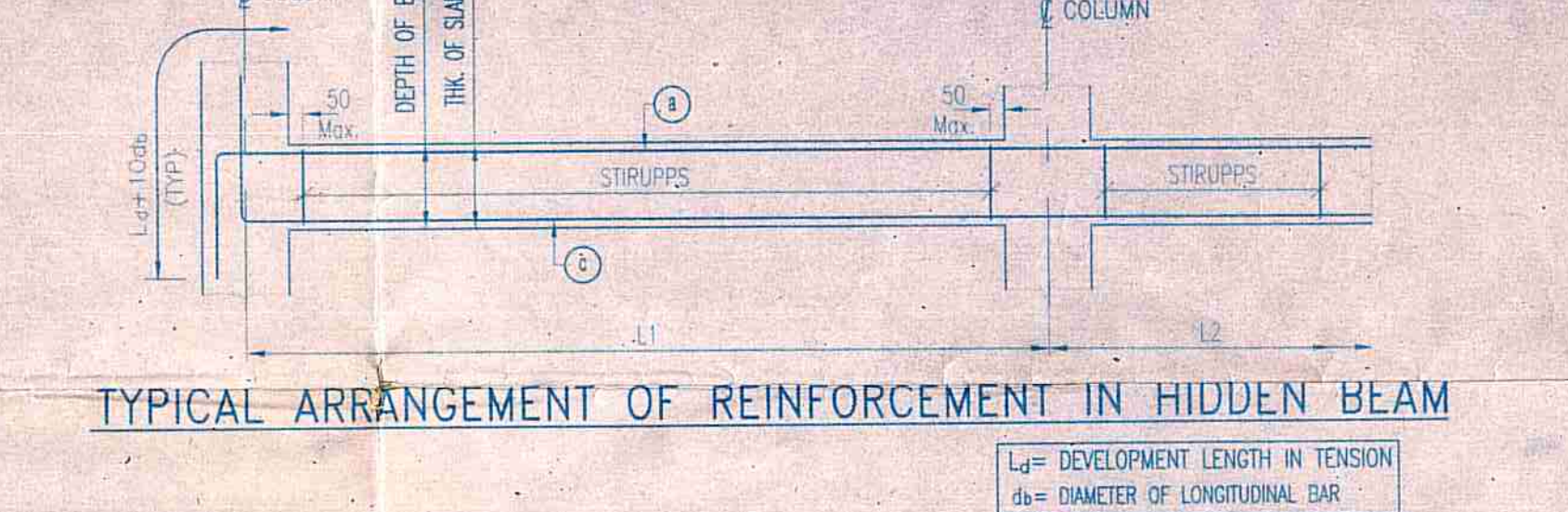
TYP. DETAILS OF 2nd FLIGHT OF STAIR. SCALE 1:25



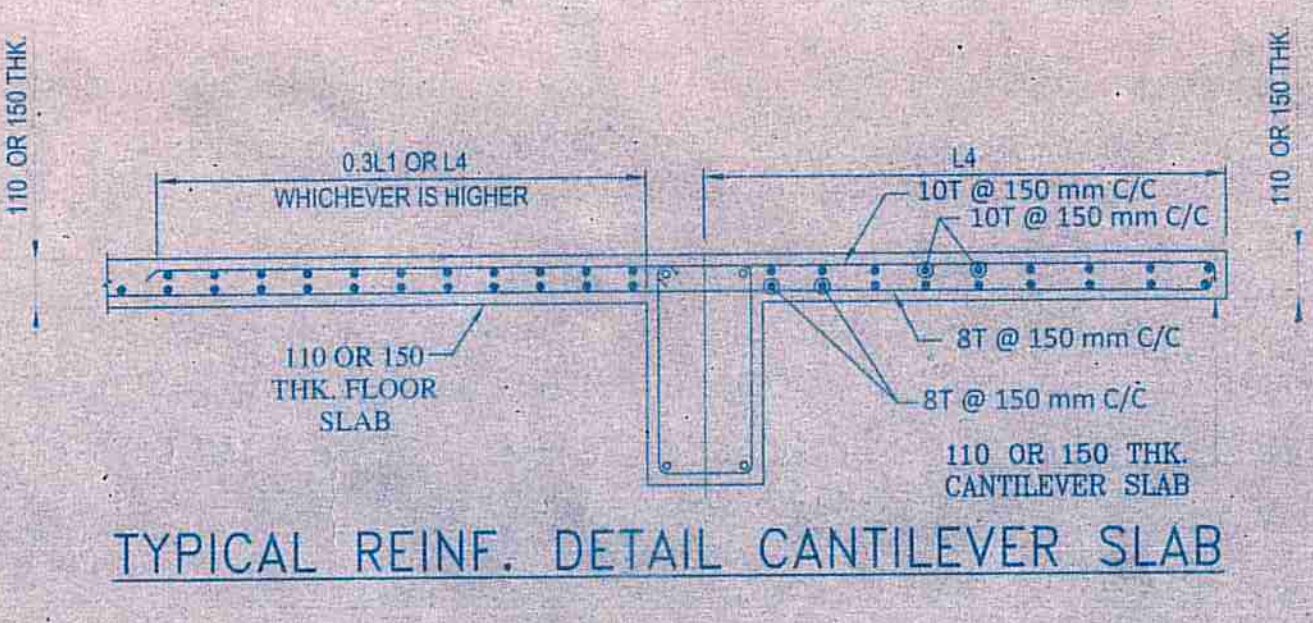
TYP. DETAILS OF 1st FLIGHT OF STAIR. SCALE 1:25



DETAIL OF BOW GIRDER IN CANTILEVER PORTION



TYPICAL ARRANGEMENT OF REINFORCEMENT IN HIDDEN BEAM



TYPICAL REINF. DETAIL CANTILEVER SLAB

SCHEDULE OF TYPICAL FLOOR BEAMS								
BEAM MARKED	BEAM SIZE		TOP REINFORCEMENT		BOTTOM REINFORCEMENT		STIRRUPS (AT SUPPORT)	STIRRUPS (AT SPAN)
	WIDTH (mm)	DEPTH (mm)	ALTHROUGH	EXTRA AT SUPPORT	ALTHROUGH	EXTRA AT SPAN		
TFB1	250	450	3-25 Φ	2-16 Φ	3-25 Φ	-	2L-8 Φ@100 C/C	2L-8 Φ@150 C/C
TFB2	250	450	3-20 Φ	-	3-16 Φ	-	2L-8 Φ@100 C/C	2L-8 Φ@150 C/C
TFB3	250	450	3-25 Φ	2-16 Φ	3-20 Φ	-	2L-8 Φ@100 C/C	2L-8 Φ@150 C/C
TFB4	250	450	3-20 Φ	2-16 Φ	3-20 Φ	-	2L-8 Φ@100 C/C	2L-8 Φ@150 C/C
TFB5	250	450	3-25 Φ	2-16 Φ	3-25 Φ	-	2L-8 Φ@100 C/C	2L-8 Φ@150 C/C
TFB6	250	450	3-25 Φ	2-16 Φ	3-25 Φ	-	2L-8 Φ@100 C/C	2L-8 Φ@150 C/C
TFB7	250	450	3-25 Φ	2-20 Φ	3-25 Φ	-	2L-8 Φ@100 C/C	2L-8 Φ@150 C/C
TFB8	250	450	3-25 Φ	2-20 Φ	3-25 Φ	-	2L-8 Φ@100 C/C	2L-8 Φ@150 C/C
TFB9	250	450	3-25 Φ	2-20 Φ	3-25 Φ	-	2L-8 Φ@100 C/C	2L-8 Φ@150 C/C
TFB10	250	450	3-25 Φ	2-20 Φ	3-25 Φ	-	2L-8 Φ@100 C/C	2L-8 Φ@150 C/C
TFB11	250	450	3-25 Φ	2-20 Φ	3-25 Φ	-	2L-8 Φ@100 C/C	2L-8 Φ@150 C/C
TFB12	250	450	3-25 Φ	2-20 Φ	3-25 Φ	-	2L-8 Φ@100 C/C	2L-8 Φ@150 C/C
TFB13	250	450	3-25 Φ	2-20 Φ	3-25 Φ	-	2L-8 Φ@100 C/C	2L-8 Φ@150 C/C
TFB14	250	450	3-25 Φ	2-20 Φ	3-25 Φ	-	2L-8 Φ@100 C/C	2L-8 Φ@150 C/C
TFB15	250	450	3-25 Φ	2-20 Φ	3-25 Φ	-	2L-8 Φ@100 C/C	2L-8 Φ@150 C/C
TFB16	250	450	3-25 Φ	2-20 Φ	3-25 Φ	-	2L-8 Φ@100 C/C	2L-8 Φ@150 C/C
TFB17	250	450	3-25 Φ	2-20 Φ	3-25 Φ	-	2L-8 Φ@100 C/C	2L-8 Φ@150 C/C
TFB18	250	450	3-25 Φ	2-20 Φ	3-25 Φ	-	2L-8 Φ@100 C/C	2L-8 Φ@150 C/C
TFB19	250	450	3-25 Φ	2-20 Φ	3-25 Φ	-	2L-8 Φ@100 C/C	2L-8 Φ@150 C/C
TFB20	250	450	3-25 Φ	2-20 Φ	3-25 Φ	-	2L-8 Φ@100 C/C	2L-8 Φ@150 C/C
TFB21	250	450	3-25 Φ	2-20 Φ	3-25 Φ	-	2L-8 Φ@100 C/C	2L-8 Φ@150 C/C
TFB22	250	450	3-25 Φ	2-20 Φ	3-25 Φ	-	2L-8 Φ@100 C/C	2L-8 Φ@150 C/C
TFB23	250	450	3-25 Φ	2-20 Φ	3-25 Φ	-	2L-8 Φ@100 C/C	2L-8 Φ@150 C/C
TFB24	250	450	3-25 Φ	2-20 Φ	3-25 Φ	-	2L-8 Φ@100 C/C	2L-8 Φ@150 C/C
TFB25	250	450	3-25 Φ	2-20 Φ	3-25 Φ	-	2L-8 Φ@100 C/C	2L-8 Φ@150 C/C
TFB26	250	450	3-25 Φ	2-20 Φ	3-25 Φ	-	2L-8 Φ@100 C/C	2L-8 Φ@150 C/C
TFB27	250	450	3-25 Φ	2-20 Φ	3-25 Φ	-	2L-8 Φ@100 C/C	2L-8 Φ@150 C/C
TFB28	250	450	3-25 Φ	2-20 Φ	3-25 Φ	-	2L-8 Φ@100 C/C	2L-8 Φ@150 C/C
TFB29	250	450	3-25 Φ	2-20 Φ	3-25 Φ	-	2L-8 Φ@100 C/C	2L-8 Φ@150 C/C
TFB30	250	450	3-25 Φ	2-20 Φ	3-25 Φ	-	2L-8 Φ@100 C/C	2L-8 Φ@150 C/C
TFB31	250	450	3-25 Φ	2-20 Φ	3-25 Φ	-	2L-8 Φ@100 C/C	2L-8 Φ@150 C/C
TFB32	250	450	3-25 Φ	2-20 Φ	3-25 Φ	-	2L-8 Φ@100 C/C	2L-8 Φ@150 C/C
TFB33	250	450	3-25 Φ	2-20 Φ	3-25 Φ	-	2L-8 Φ@100 C/C	2L-8 Φ@150 C/C
TFB34	250	450	3-25 Φ	2-20 Φ	3-25 Φ	-	2L-8 Φ@100 C/C	2L-8 Φ@150 C/C
TFB35	250	450	3-25 Φ	2-20 Φ	3-25 Φ	-	2L-8 Φ@100 C/C	2L-8 Φ@150 C/C
TFB36	250	450	3-25 Φ	2-20 Φ	3-25 Φ	-	2L-8 Φ@100 C/C	2L-8 Φ@150 C/C
TFB37	250	450	3-25 Φ	2-20 Φ	3-25 Φ	-	2L-8 Φ@100 C/C	2L-8 Φ@150 C/C
TFB38	250	450	3-25 Φ	2-20 Φ	3-25 Φ	-	2L-8 Φ@100 C/C	2L-8 Φ@150 C/C
TFB39	250	450	3-25 Φ	2-20 Φ	3-25 Φ	-	2L-8 Φ@100 C/C	2L-8 Φ@150 C/C
TFB40	250	450	3-25 Φ	2-20 Φ	3-25 Φ	-	2L-8 Φ@100 C/C	2L-8 Φ@150 C/C
TFB41	250	450	3-25 Φ	2-20 Φ	3-25 Φ	-	2L-8 Φ@100 C/C	2L-8 Φ@150 C/C
TFB42	250	450	3-25 Φ	2-20 Φ	3-25 Φ	-	2L-8 Φ@100 C/C	2L-8 Φ@150 C/C
TFB43	250	450	3-25 Φ	2-20 Φ	3-25 Φ	-	2L-8 Φ@100 C/C	2L-8 Φ@150 C/C
TFB44	250	450	3-25 Φ	2-20 Φ	3-25 Φ	-	2L-8 Φ@100 C/C	2L-8 Φ@150 C/C
TFB45	250	450	3-25 Φ	2-20 Φ	3-25 Φ	-	2L-8 Φ@100 C/C	2L-8 Φ@150 C/C
TFB46	250	450	3-25 Φ	2-20 Φ	3-25 Φ	-	2L-8 Φ@100 C/C	2L-8 Φ@150 C/C
TFB47	250	450	3-25 Φ	2-20 Φ	3-25 Φ	-	2L-8 Φ@100 C/C	2L-8 Φ@150 C/C
TFB48	250	450	3-25 Φ	2-20 Φ	3-25 Φ	-	2L-8 Φ@100 C/C	2L-8 Φ@150 C/C
TFB49	250	450	3-25 Φ	2-20 Φ	3-25 Φ	-	2L-8 Φ@100 C/C	2L-8 Φ@150 C/C
TFB50	250	450	3-25 Φ	2-20 Φ	3-25 Φ	-	2L-8 Φ@100 C/C	2L-8 Φ@150 C/C
TFB51	250	450	3-25 Φ	2-20 Φ	3-25 Φ	-	2L-8 Φ@100 C/C	2L-8 Φ@150 C/C
TFB52	250	450	3-25 Φ	2-20 Φ	3-25 Φ	-	2L-8 Φ@100 C/C	2L-8 Φ@150 C/C
TFB53	250	450	3-25 Φ	2-20 Φ	3-25 Φ	-	2L-8 Φ@100 C/C	2L-8 Φ@150 C/C
TFB54	250	450	3-25 Φ	2-20 Φ	3-25 Φ	-	2L-8 Φ@100 C/C	2L-8 Φ@150 C/C
TFB55	250	450	3-25 Φ	2-20 Φ	3-25 Φ	-	2L-8 Φ@100 C/C	2L-8 Φ@150 C/C
TFB56	250	450	3-25 Φ	2-20 Φ	3-25 Φ	-	2L-8 Φ@100 C/C	2L-8 Φ@150 C/C
TFB57	250	450	3-25 Φ	2-20 Φ	3-25 Φ	-	2L-8 Φ@100 C/C	2L-8 Φ@150 C/C
TFB58	250	450	3-25 Φ	2-20 Φ	3-25 Φ	-	2L-8 Φ@100 C/C	2L-8 Φ@150 C/C
TFB59	250	450	3-25 Φ	2-20 Φ	3-25 Φ	-	2L-8 Φ@100 C/C	2L-8 Φ@150 C/C
TFB60	250	450	3-25 Φ	2-20 Φ	3-25 Φ	-	2L-8 Φ@100 C/C	2L-8 Φ@150 C/C
TFB61	250	450	3-25 Φ	2-20 Φ	3-25 Φ	-	2L-8 Φ@100 C/C	2L-8 Φ@150 C/C
TFB62	250	450	3-25 Φ	2-20 Φ	3-25 Φ	-	2L-8 Φ@100 C/C	2L-8 Φ@150 C/C
TFB63	250	450	3-25 Φ	2-20 Φ	3-25 Φ	-	2L-8 Φ@100 C/C	2L-8 Φ@150 C/C
TFB64	250	450	3-25 Φ	2-20 Φ	3-25 Φ	-	2L-8 Φ@100 C/C	2L-8 Φ@150 C/C
TFB65	250	450	3-25 Φ	2-20 Φ	3-25 Φ	-	2L-8 Φ@100 C/C	2L-8 Φ@150 C/C
TFB66	250	450	3-25 Φ	2-20 Φ	3-25 Φ	-	2L-8 Φ@100 C/C	2L-8 Φ@150 C/C
TFB67	250	450	3-25 Φ	2-20 Φ	3-25 Φ	-	2L-8 Φ@100 C/C	2L-8 Φ@150 C/C
TFB68	250	450	3-25 Φ	2-20 Φ	3-25 Φ	-	2L-8 Φ@100 C/C	2L-8 Φ@150 C/C
TFB69	250	450	3-25 Φ	2-20 Φ	3-25 Φ	-	2L-8 Φ@100 C/C	2L-8 Φ@150 C/C
TFB70	250	450	3-25 Φ	2-20 Φ	3-25 Φ	-	2L-8 Φ@100 C/C	2L-8 Φ@150 C/C
TFB71	250	450	3-25 Φ	2-20 Φ	3-25 Φ	-	2L-8 Φ@100 C/C	2L-8 Φ@150 C/C
TFB72	250	450	3-25 Φ	2-20 Φ	3-25 Φ	-	2L-8 Φ@100 C/C	2L-8 Φ@150 C/C
TFB73	250	450	3-25 Φ	2-20 Φ	3-25 Φ	-	2L-8 Φ@100 C/C	2L-8 Φ@150 C/C
TFB74	250	450	3-25 Φ	2-20 Φ	3-25 Φ	-	2L-8 Φ@100 C/C	2L-8 Φ@150 C/C
TFB75	250	450	3-25 Φ	2-20 Φ	3-25 Φ	-	2L-8 Φ@100 C/C	2L-8 Φ@150 C/C
TFB76	250	450	3-25 Φ	2-20 Φ	3-25 Φ	-	2L-8 Φ@100 C/C	2L-8 Φ@150 C/C
TFB77	250	450	3-25 Φ	2-20 Φ	3-25 Φ	-	2L-8 Φ@100 C/C	2L-8 Φ@150 C/C
TFB78	250	450	3-25 Φ	2-20 Φ	3-25 Φ	-	2L-8 Φ@100 C/C	2L-8 Φ@150 C/C
TFB79	250	450	3-25 Φ	2-20 Φ	3-25 Φ	-	2L-8 Φ@100 C/C	2L-8 Φ@150 C/C
TFB80	250	450	3-25 Φ	2-20 Φ	3-25 Φ	-	2L-8 Φ@100 C/C	2L-8 Φ@150 C/C
TFB81	250	450	3-25 Φ	2-20 Φ	3-25 Φ	-	2L-8 Φ@100 C/C	2L-8 Φ@150 C/C
TFB82	250	450	3-25 Φ	2-20 Φ	3-25 Φ	-	2L-8 Φ@100 C/C	2L-8 Φ@150 C/C
TFB83	250	450	3-25 Φ	2-20 Φ	3-25 Φ	-	2L-8 Φ@100 C/C	2L-8 Φ@150 C/C
TFB84	250	450	3-25 Φ	2-20 Φ	3-25 Φ	-	2L-8 Φ@100 C/C	2L-8 Φ@150 C/C
TFB85	250	450	3-25 Φ	2-20 Φ	3-25 Φ	-	2L-8 Φ@100 C/C	2L-8 Φ@150 C/C
TFB86	250	450	3-25 Φ	2-20 Φ	3-25 Φ			