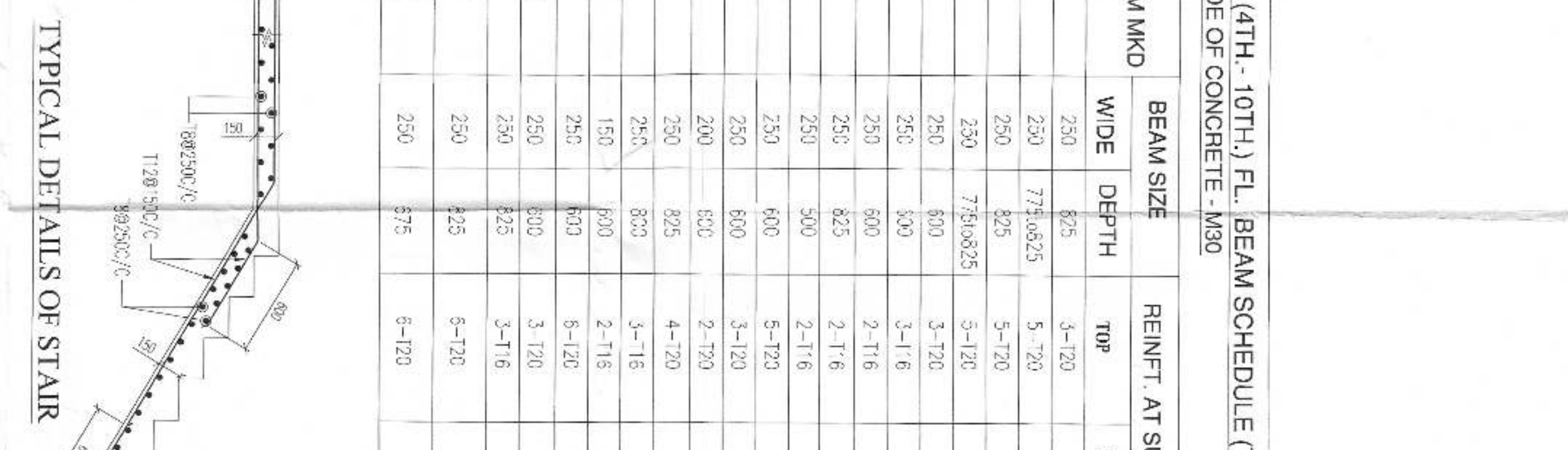
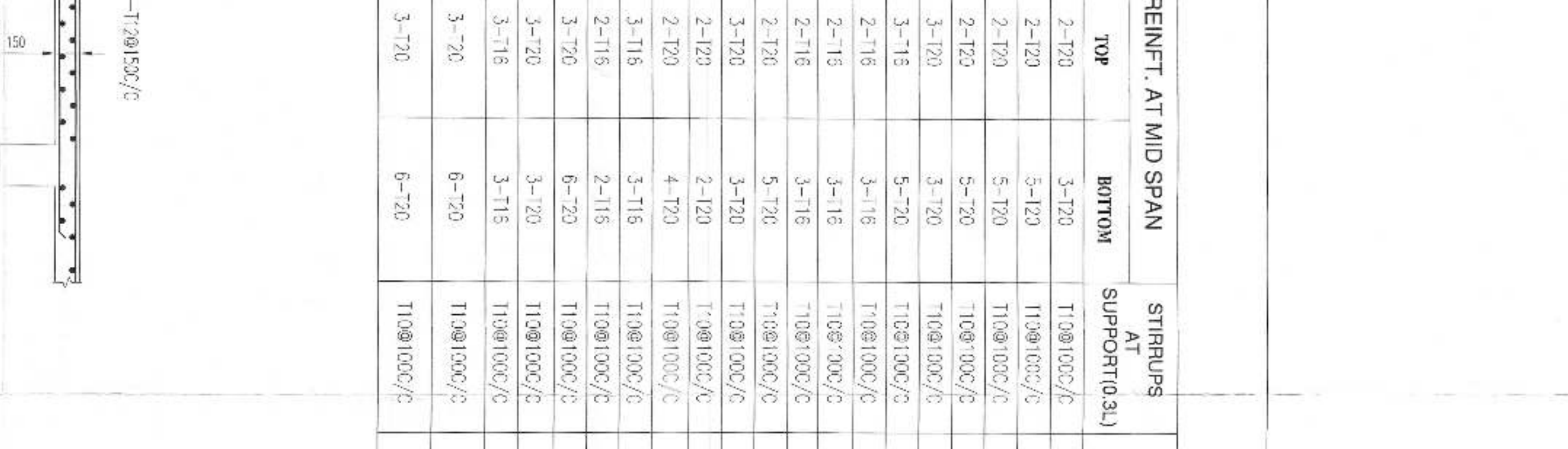




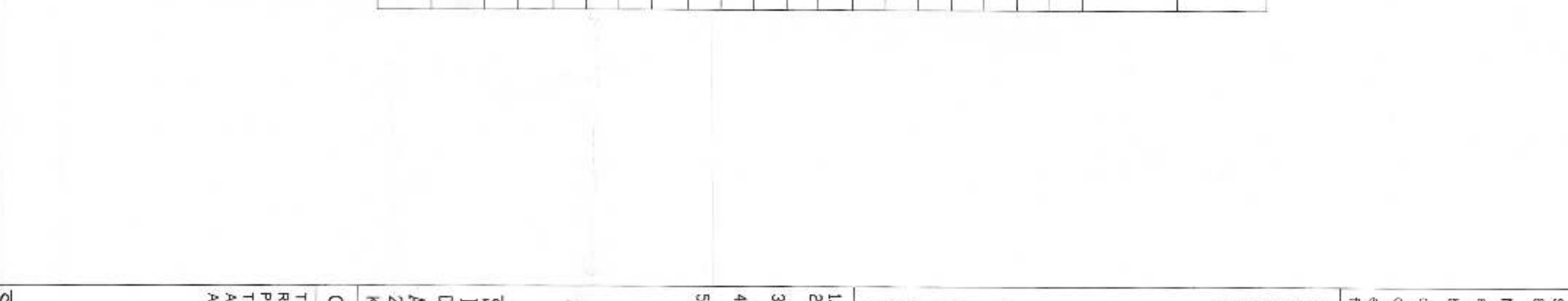
8TH FL. BEAM LAYOUT
TOWER-02



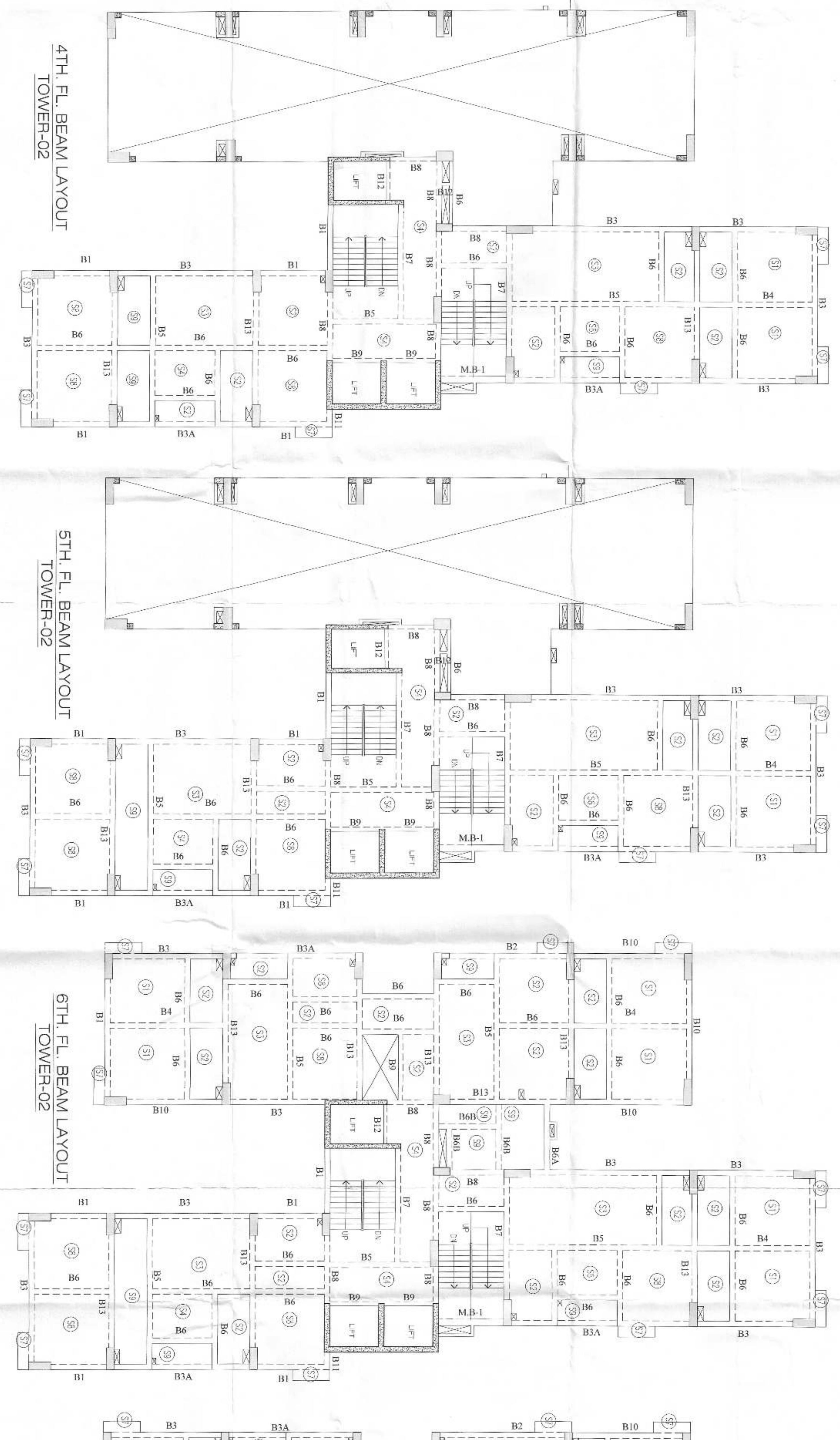
9TH FL. BEAM LAYOUT
TOWER-02



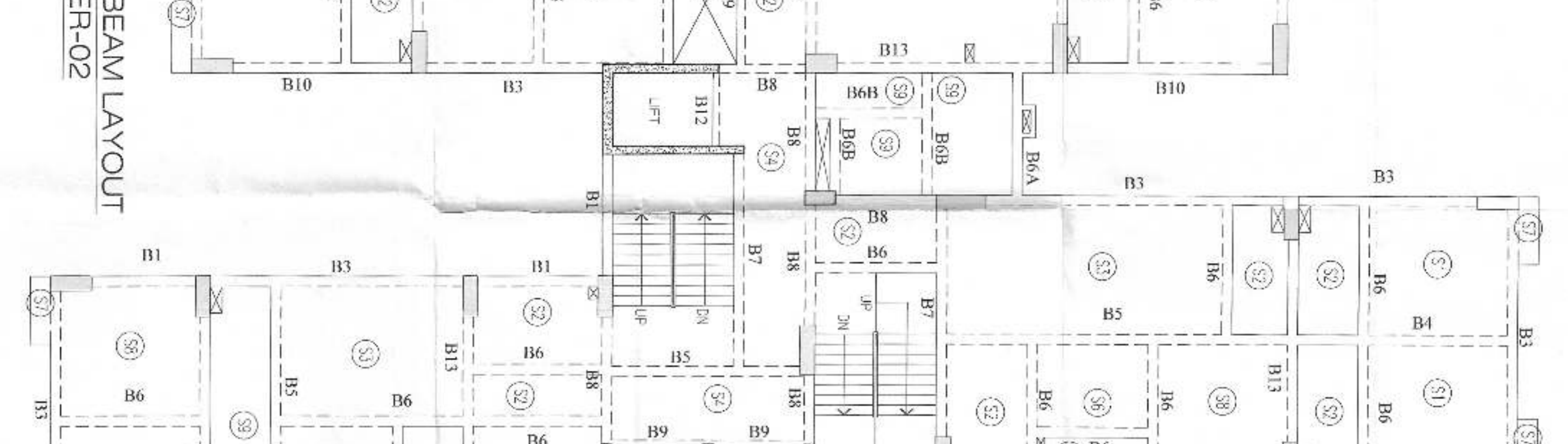
10TH FL. BEAM LAYOUT
TOWER-02



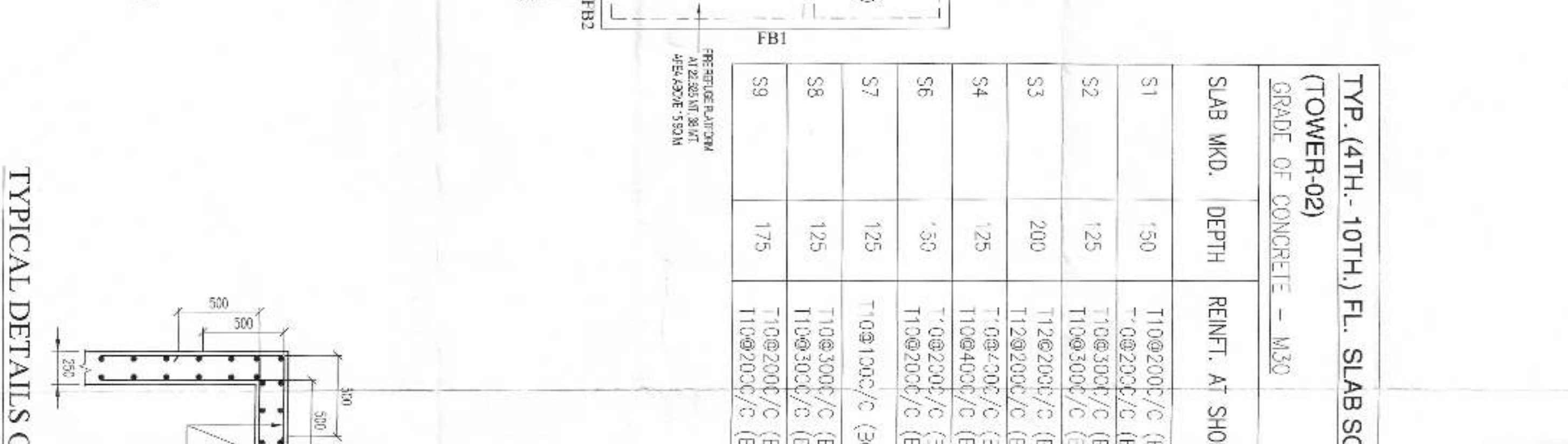
TYPICAL DETAILS OF STAIR



4TH FL. BEAM LAYOUT
TOWER-02



5TH FL. BEAM LAYOUT
TOWER-02



6TH FL. BEAM LAYOUT
TOWER-02



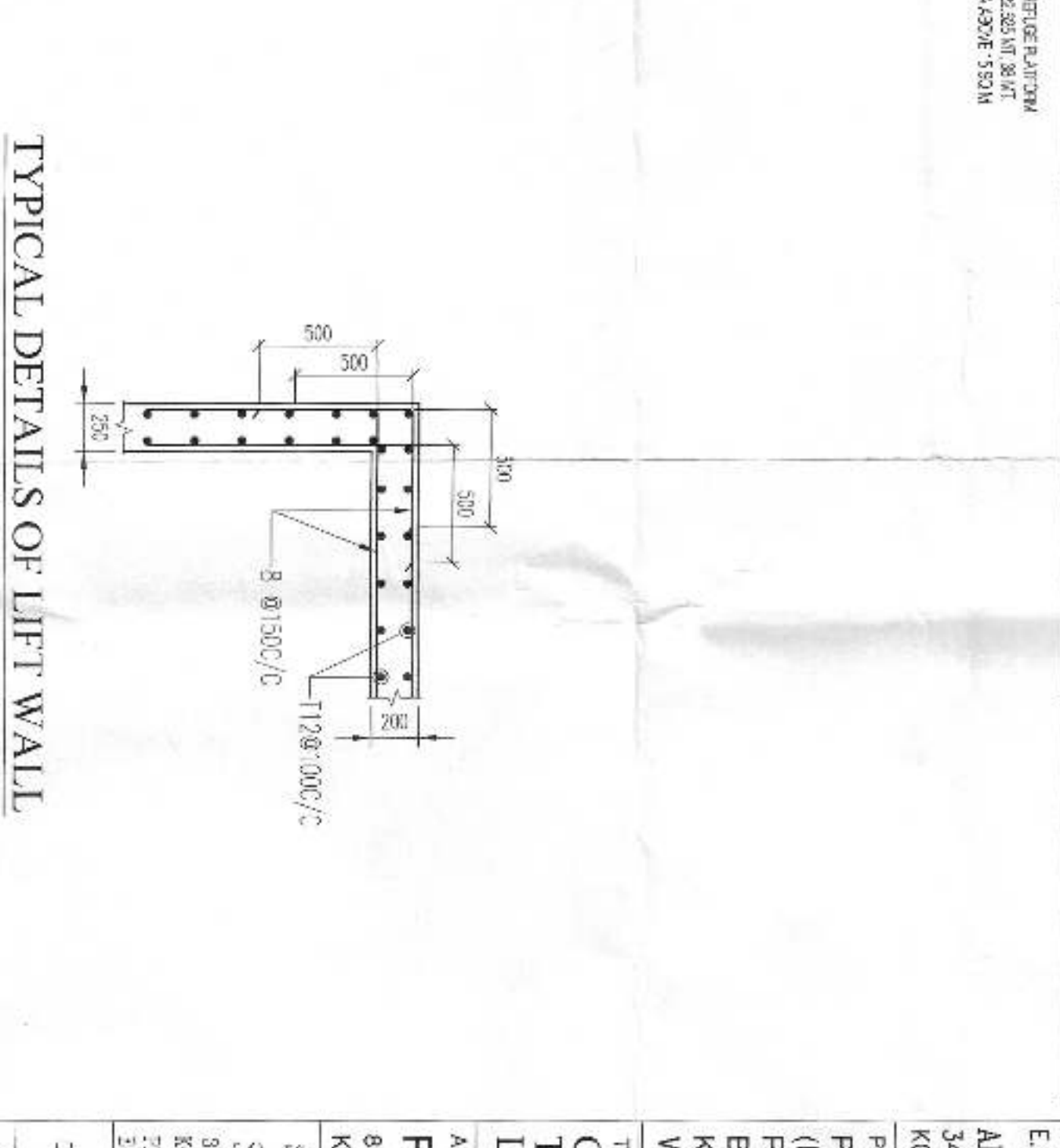
7TH FL. BEAM LAYOUT
TOWER-02

TYP. (4TH - 10TH.) FL. BEAM SCHEDULE (TOWER-02)
TYPE OF CONCRETE - M30

BEAM MKO	BEAM SIZE	REINFT. AT SUPPORT	REINFT. AT MID SPAN	STAIRUPS AT SUPPORT(0.3)	STAIRUPS AT SPAN
B1	230 / 425	3-120	2-70		
B2	775/625	5-28	3-28		
B3	230 / 425	5-28	3-28		
B4	230 / 425	5-120	3-120		
B5	775/625	3-120	3-120		
B6	230 / 425	3-120	3-120		
B10	230 / 425	3-116	3-116		
B11	230 / 425	3-116	3-116		
B12	230 / 425	3-116	3-116		
B13	230 / 425	3-120	3-120		
B3A	230 / 425	3-120	3-120		
B4A	230 / 425	3-116	3-116		
B5A	230 / 425	3-116	3-116		
B6A	230 / 425	3-116	3-116		
B7	230 / 425	3-120	3-120		
B8	230 / 425	3-120	3-120		
B9	230 / 425	3-120	3-120		
B10A	230 / 425	3-120	3-120		
B11A	230 / 425	3-120	3-120		
B12A	230 / 425	3-116	3-116		
B13A	230 / 425	3-116	3-116		
B13B	230 / 425	3-116	3-116		
B13C	230 / 425	3-116	3-116		
B13D	230 / 425	3-116	3-116		
B13E	230 / 425	3-116	3-116		
B13F	230 / 425	3-116	3-116		
B13G	230 / 425	3-116	3-116		
B13H	230 / 425	3-116	3-116		
B13I	230 / 425	3-116	3-116		
B13J	230 / 425	3-116	3-116		
B13K	230 / 425	3-116	3-116		
B13L	230 / 425	3-116	3-116		
B13M	230 / 425	3-116	3-116		
B13N	230 / 425	3-116	3-116		
B13O	230 / 425	3-116	3-116		
B13P	230 / 425	3-116	3-116		
B13Q	230 / 425	3-116	3-116		
B13R	230 / 425	3-116	3-116		
B13S	230 / 425	3-116	3-116		
B13T	230 / 425	3-116	3-116		
B13U	230 / 425	3-116	3-116		
B13V	230 / 425	3-116	3-116		
B13W	230 / 425	3-116	3-116		
B13X	230 / 425	3-116	3-116		
B13Y	230 / 425	3-116	3-116		
B13Z	230 / 425	3-116	3-116		
B14	230 / 425	3-120	3-120		
B15	230 / 425	3-120	3-120		
B16	230 / 425	3-120	3-120		
B17	230 / 425	3-120	3-120		
B18	230 / 425	3-120	3-120		
B19	230 / 425	3-120	3-120		
B20	230 / 425	3-120	3-120		
B21	230 / 425	3-120	3-120		
B22	230 / 425	3-120	3-120		
B23	230 / 425	3-120	3-120		
B24	230 / 425	3-120	3-120		
B25	230 / 425	3-120	3-120		
B26	230 / 425	3-120	3-120		
B27	230 / 425	3-120	3-120		
B28	230 / 425	3-120	3-120		
B29	230 / 425	3-120	3-120		
B30	230 / 425	3-120	3-120		
B31	230 / 425	3-120	3-120		
B32	230 / 425	3-120	3-120		
B33	230 / 425	3-120	3-120		
B34	230 / 425	3-120	3-120		
B35	230 / 425	3-120	3-120		
B36	230 / 425	3-120	3-120		
B37	230 / 425	3-120	3-120		
B38	230 / 425	3-120	3-120		
B39	230 / 425	3-120	3-120		
B40	230 / 425	3-120	3-120		
B41	230 / 425	3-120	3-120		
B42	230 / 425	3-120	3-120		
B43	230 / 425	3-120	3-120		
B44	230 / 425	3-120	3-120		
B45	230 / 425	3-120	3-120		
B46	230 / 425	3-120	3-120		
B47	230 / 425	3-120	3-120		
B48	230 / 425	3-120	3-120		
B49	230 / 425	3-120	3-120		
B50	230 / 425	3-120	3-120		
B51	230 / 425	3-120	3-120		
B52	230 / 425	3-120	3-120		
B53	230 / 425	3-120	3-120		
B54	230 / 425	3-120	3-120		
B55	230 / 425	3-120	3-120		
B56	230 / 425	3-120	3-120		
B57	230 / 425	3-120	3-120		
B58	230 / 425	3-120	3-120		
B59	230 / 425	3-120	3-120		
B60	230 / 425	3-120	3-120		
B61	230 / 425	3-120	3-120		
B62	230 / 425	3-120	3-120		
B63	230 / 425	3-120	3-120		
B64	230 / 425	3-120	3-120		
B65	230 / 425	3-120	3-120		
B66	230 / 425	3-120	3-120		
B67	230 / 425	3-120	3-120		
B68	230 / 425	3-120	3-120		
B69	230 / 425	3-120	3-120		
B70	230 / 425	3-120	3-120		
B71	230 / 425	3-120	3-120		
B72	230 / 425	3-120	3-120		
B73	230 / 425	3-120	3-120		
B74	230 / 425	3-120	3-120		
B75	230 / 425	3-120	3-120		

TYP. (4TH - 10TH.) FL. SLAB SCHEDULE (TOWER-02)
GRADE OF CONCRETE - M30

SLAB MKO.	DEPTH	REINFT. AT SHORTER SPAN	REINFT. AT LONGER SPAN
S1	50	T10@200/C (BOT SFR)	T10@300/C (BOT SFR)
S2	125	T10@200/C (BOT SFR)	T10@300/C (BOT SFR)
S3	125	T10@200/C (BOT SFR)	T10@300/C (BOT SFR)
S4	200	T10@200/C (BOT SFR)	T10@300/C (BOT SFR)
S5	125	T10@200/C (BOT SFR)	T10@300/C (BOT SFR)
S6	125	T10@200/C (BOT SFR)	T10@300/C (BOT SFR)
S7	125	T10@200/C (BOT SFR)	T10@300/C (BOT SFR)
S8	125	T10@200/C (BOT SFR)	T10@300/C (BOT SFR)
S9	175	T10@200/C (BOT SFR)	T10@300/C (BOT SFR)



CERTIFICATE OF ARCHITECT
I, the undersigned, being a duly qualified Architect registered under the Architects Act, 1947, do hereby certify that the above drawings are prepared by me or under my direct supervision and that I am a member of the Institute of Architects, India.

CERTIFICATE OF STRUCTURAL ENGINEER
I, the undersigned, being a duly qualified Structural Engineer registered under the Structural Engineers Act, 1948, do hereby certify that the above drawings are prepared by me or under my direct supervision and that I am a member of the Institution of Structural Engineers, India.

SIGNATURE OF ARCHITECT
RAJ KUMAR AGARWAL
REGISTERED ARCHITECT NO. C/94/7940
COUNCIL REGISTRATION NO. C/94/7940

SIGNATURE OF STRUCTURAL ENGINEER
SANJIV J. PAREKH
REGISTERED STRUCTURAL ENGINEER
NO. E/31/1004
COUNCIL REGISTRATION NO. E/31/1004

SIGNATURE OF ARCHITECT REVIEWER
SANJIV GUHA
REGISTERED ARCHITECT
NO. E/108/78
COUNCIL REGISTRATION NO. E/108/78

PROJECT:
PROPOSED 6-XII STORED 53.375 MT HEIGHT RESIDENTIAL BUILDING SHEET NO. HB-8 BELAGHATA ROAD, KOLKATA-700015, UNDER BELAGHATA MUNICIPAL CORPORATION, WARD NO.-57, BOROUGH-VII.

TITLE:
CORPORATION DRAWING
TYP. (4TH - 10TH.) FLOOR BEAM LAYOUT (TOWER-02)

CLIENT:
S.P.A CONSULTANTS
88, BOND STREET, KOLKATA-16

DATE:
24.06.2016

SCALE:
SCALE: 1:100

NOTES:
1. ALL DIMENSIONS ARE IN MM UNLESS OTHERWISE MENTIONED.
2. ALL DIMENSIONS ARE TO FACE UNLESS SPECIFIED OTHERWISE.
3. ALL DIMENSIONS ARE TO FACE UNLESS SPECIFIED OTHERWISE.
4. ALL DIMENSIONS ARE TO FACE UNLESS SPECIFIED OTHERWISE.
5. ALL DIMENSIONS ARE TO FACE UNLESS SPECIFIED OTHERWISE.
6. ALL DIMENSIONS ARE TO FACE UNLESS SPECIFIED OTHERWISE.
7. ALL DIMENSIONS ARE TO FACE UNLESS SPECIFIED OTHERWISE.
8. ALL DIMENSIONS ARE TO FACE UNLESS SPECIFIED OTHERWISE.
9. ALL DIMENSIONS ARE TO FACE UNLESS SPECIFIED OTHERWISE.
10. ALL DIMENSIONS ARE TO FACE UNLESS SPECIFIED OTHERWISE.

PROJECT:
PROPOSED 6-XII STORED 53.375 MT HEIGHT RESIDENTIAL BUILDING SHEET NO. HB-8 BELAGHATA ROAD, KOLKATA-700015, UNDER BELAGHATA MUNICIPAL CORPORATION, WARD NO.-57, BOROUGH-VII.

TITLE:
CORPORATION DRAWING
TYP. (4TH - 10TH.) FLOOR BEAM LAYOUT (TOWER-02)

CLIENT:
S.P.A CONSULTANTS
88, BOND STREET, KOLKATA-16

DATE:
24.06.2016

SCALE:
SCALE: 1:100

JOB NO.:
S.P.A/2016/100

DWG. NO.:
HB-8

KOLKATA MUNICIPAL CORPORATION
 GENERAL MANAGER
 MUNICIPAL CORPORATION
 20, COLLEGE STREET, CALCUTTA-700016
 Telephone: 22222222
 Fax: 22222222
 E-mail: gm@kmc.gov.in
 Website: www.kmc.gov.in

Provided that the design/contract is submitted by the
 applicant to the Corporation within the time specified
 in the bye-laws of the Corporation and the design/contract
 is approved by the Corporation. The Corporation shall
 not be liable for any loss or damage to the applicant
 arising out of the design/contract or any other matter
 connected therewith. The Corporation shall not be
 bound to accept any design/contract submitted by the
 applicant if it is not in conformity with the bye-laws
 of the Corporation.

OFFICE OF THE GENERAL MANAGER
 MUNICIPAL CORPORATION
 20, COLLEGE STREET, CALCUTTA-700016