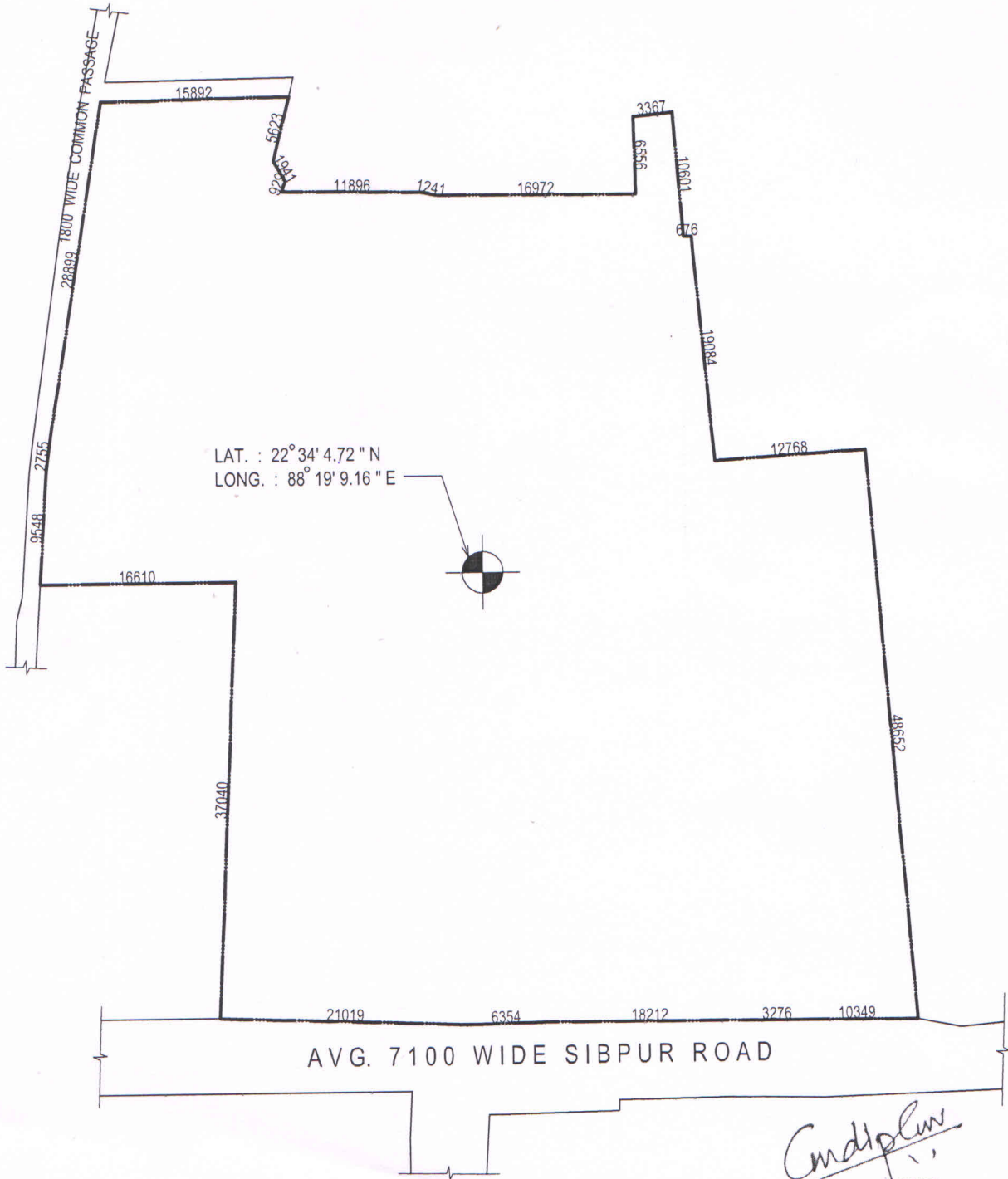


HOLDING NO. 184, SHIBPUR ROAD, P.S. : SHIBPUR, H.M.C. WARD NO. - 37,
BOROUGH - VI, DIST. : HOWRAH, PIN CODE - 711102



Sudip Kr. Sur
SUDIP KR. SUR
Registered Architect
Regn. No. CA/99/2402'