

CAR PARK

CAR PARK

CAR PARK

CAR PARK

14672

VAT VAT

1000

UNDER GROUND WATER RESERVOIR (Capacity 14,000 LITRES)

DRIVE WAY

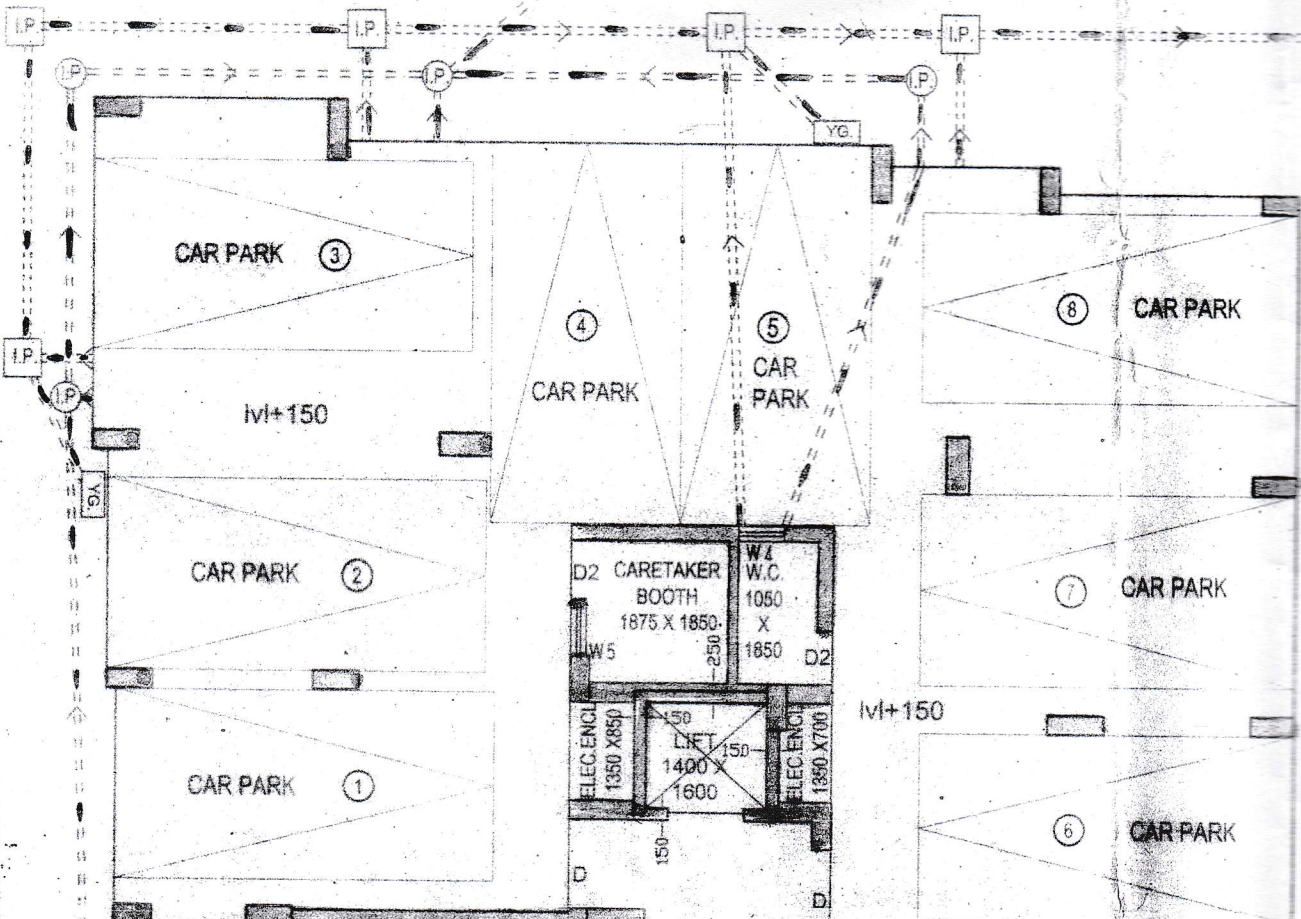
M+00

SEPTIC TANK

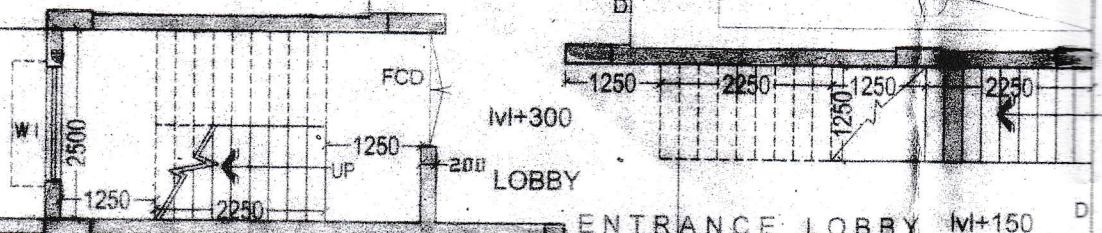
200 TH TOP SLAB IS AT PER G.L AVE TO WITHSTANDS THE LOAD OF FIRE ENGINE

M+00

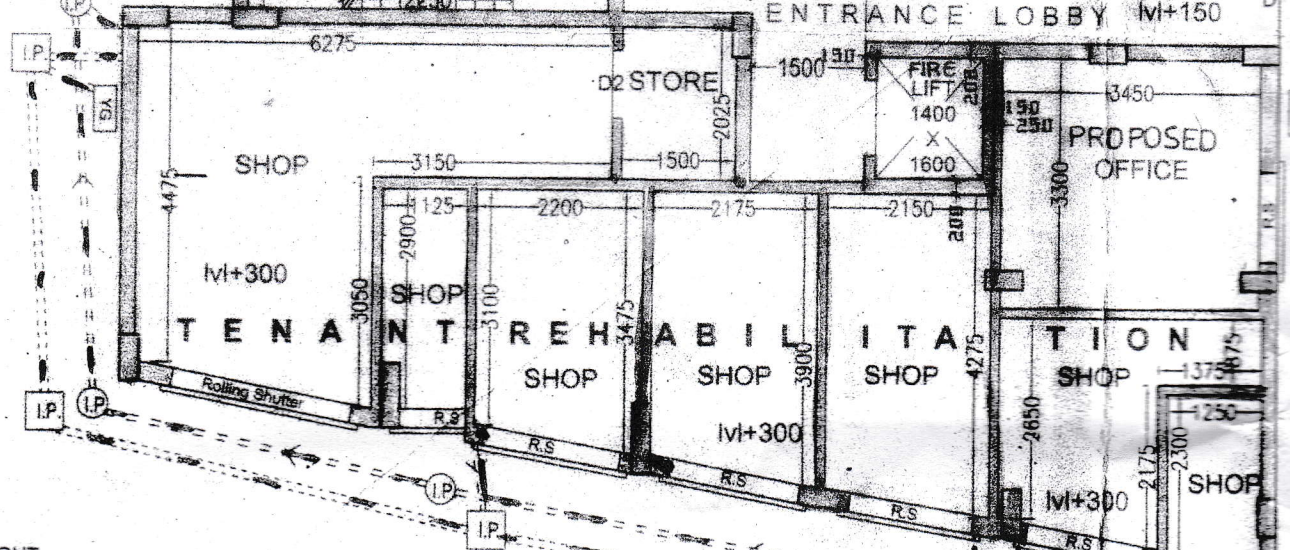
FIRE FIGHTING WATER RESERVOIR (CAPACITY : 42,000 LITRES)
200 TH TOP SLAB IS AT PER G.L AVE TO WITHSTAND THE LOAD OF FIRE ENGINE



M+00



DRIVE WAY



7 M HEIGHT