



LIVE  
LIFE  
**KING**  
SIZE



# RISHAAN **APARTMENT**

*live life king size*



Best Amenities



Best Location



Best Build-up area

Project Site: **HPL Link Road**  
Basudevpur, Haldia, Purba Medinipur

CONTACT NO:  
**03224-272631**  
**9233718254**



# PROJECT SPECIFICATION



|                    |   |
|--------------------|---|
| <b>Structure</b>   | RCC Framed structure with in fill ACC BLOCK WALLS.  |
| <b>WALL Finish</b> | Internal- Living /Dining/Bed Room-Smooth POP finish over plaster surface.<br>External-Finish with suitable weather-proof paint. |
| <b>Flooring</b>    | Finished with marble/vitrified tiles.   |

|                 |  |
|-----------------|--|
| <b>Kitchen</b>  | Granite cooking platform,<br>Counter with stainless steel sink,<br>Ceramic tiles to 2ft.above working platform. Rest of the wall smooth POP finish over plastered surface. |
| <b>Toilet</b>   | 6ft. height glazed ceramic tiles in toilet. white sanitary fixtures, CP fittings & provision for geyser in at least one toilet.  |
| <b>Doors</b>    | Seasoned salwood frames with wood flush doors.   |
| <b>Windows</b>  | Powder coated aluminum windows with MS grill.  |
| <b>Verandah</b> | 5 ft Height with GI cover grill  |

|   |  |
|---|--|
| <b>Electrical</b>                       | Copper electrical wiring throughout in concealed conduit with provision for light point, TV & telephone sockets with protective MCBs |
| <b>Hardware</b>                         | Supreme PVC pipe, Brass or Stainless Steel hardware fitting or reputed make  |
| <b>Sanitary fittings &amp; fixtures</b> | Ceramic basins & Water closet of reputed (Conformed to ISI) brand fitting of reputed make  |
| <b>Power Supply</b>                     | Power backup by DG set of instant changeover   |
| <b>Elevator</b>                         | Standard 4 Passengers Lift of Reputed Brand (Automatic door)   |
| <b>Landscaping</b>                      | Well decorated landscaped garden with children playground.   |

**24 hours security services with amenities like mini market complex**



**The KINGSIZE view**



**Sample Master Bedroom**



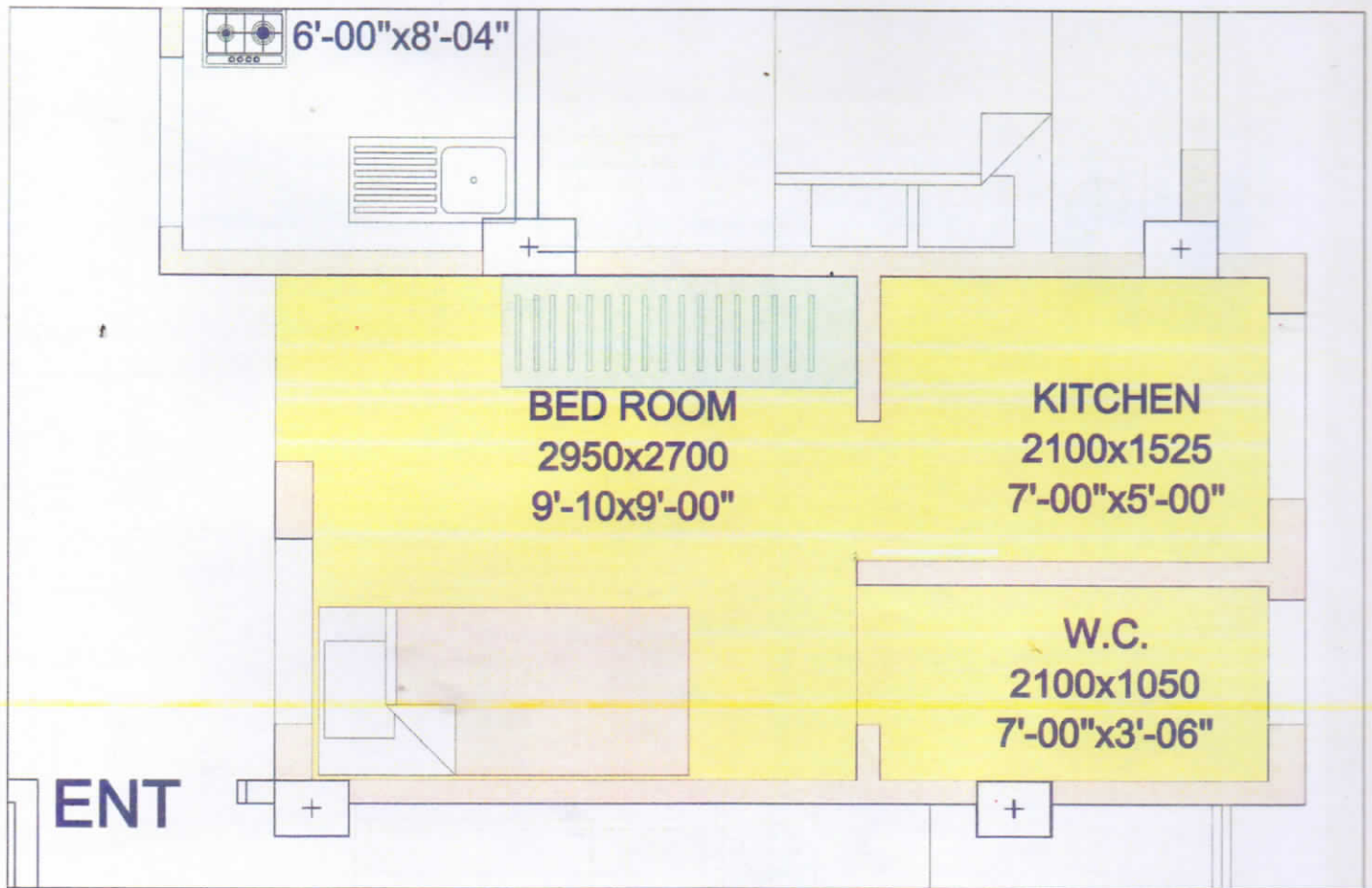
**Sample Bathroom**



**Sample Kitchen**



**Sample Dining & Living Room**



**FLAT TYPE**

**FLAT - Z**



**BUILT - UP AREA**

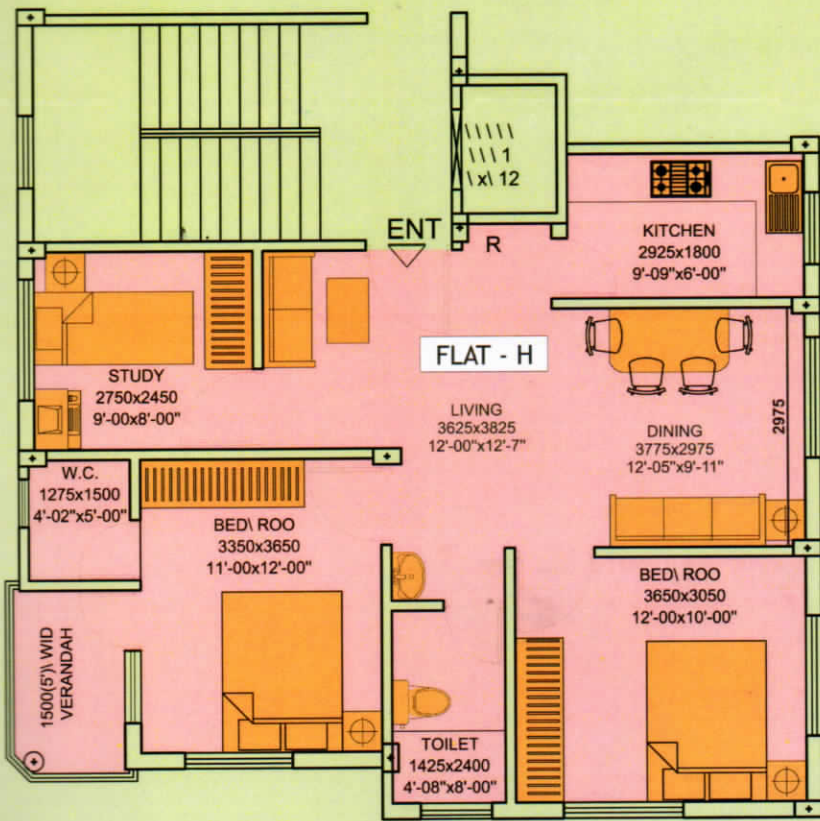
**175.00 SQ.FT.**



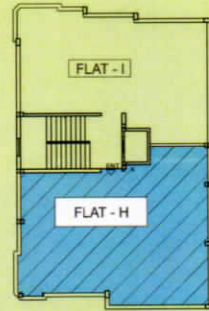
**SUPER**

**BUILT - UP AREA**

**219.00 SQ.FT.**

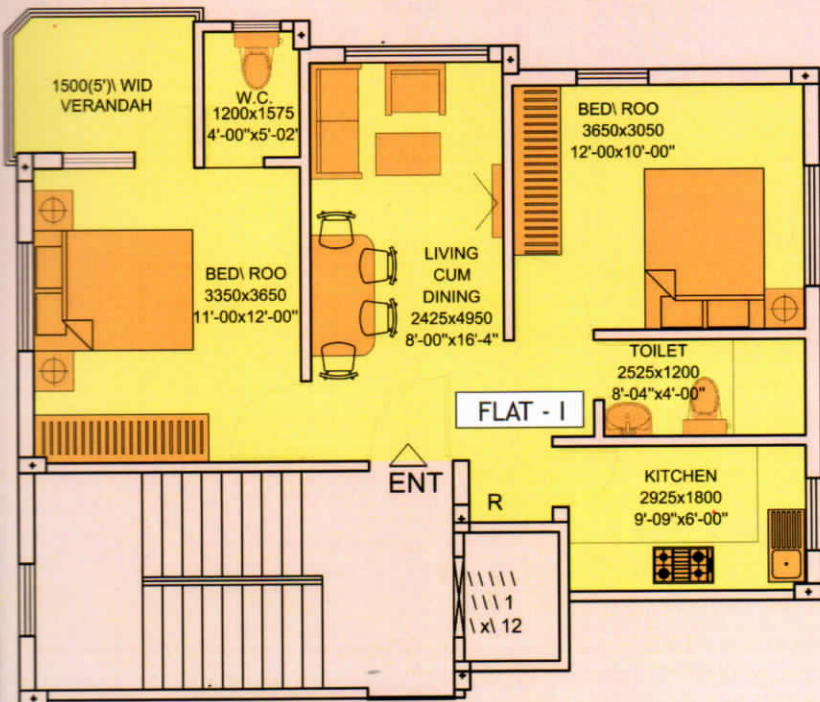


BLOCK - 1

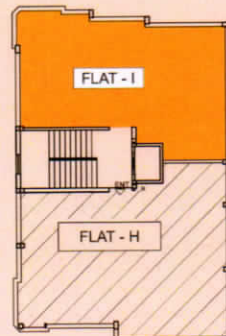


- ▶ FLAT TYPE  
FLAT - H
- ▶ BUILT- UP AREA  
810.00 SQ.FT.
- ▶ SUPER  
BUILT- UP AREA  
1013.00 SQ.FT.

FLAT - H/1,H/2,H/3,  
H/4,H/5,H/6

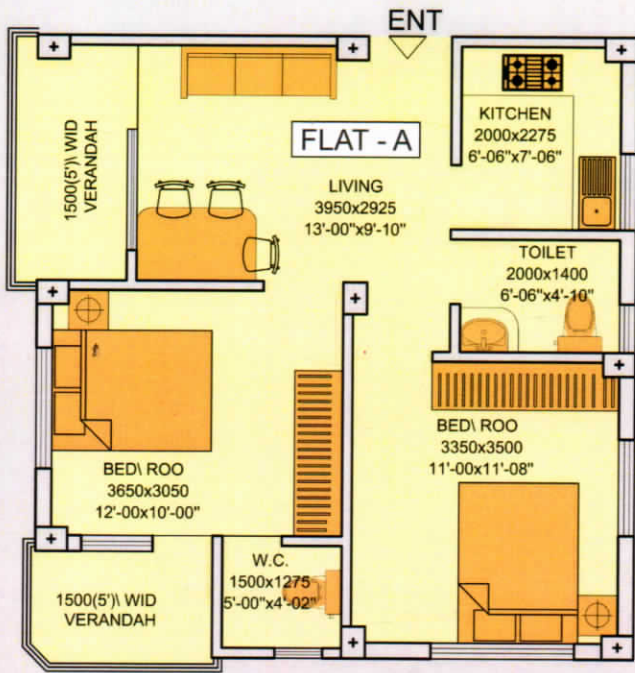


BLOCK - 1

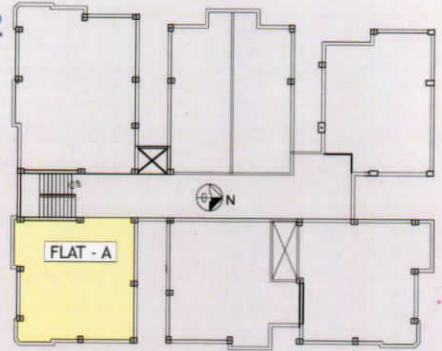


- ▶ FLAT TYPE  
FLAT - I
- ▶ BUILT- UP AREA  
655.00 SQ.FT.
- ▶ SUPER  
BUILT- UP AREA  
819.00 SQ.FT.

FLAT - I/1,I/2,I/3,  
I/4,I/5,I/6



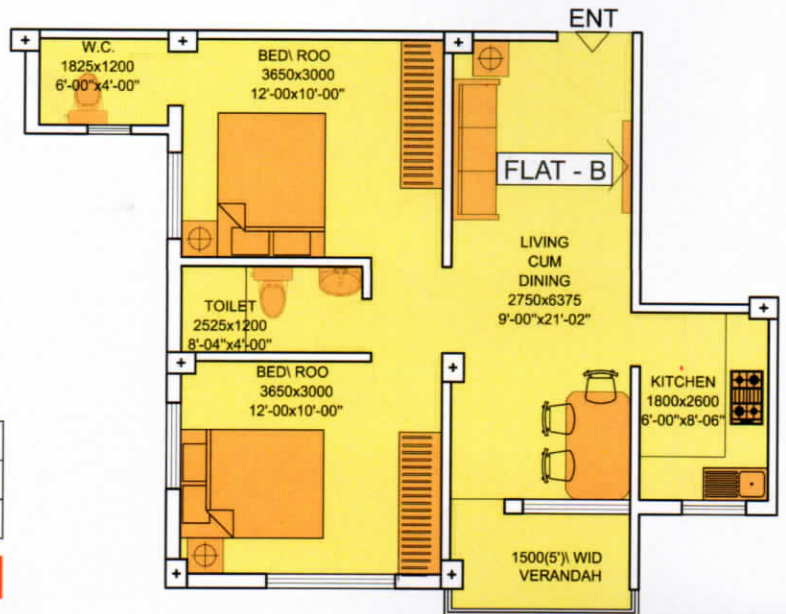
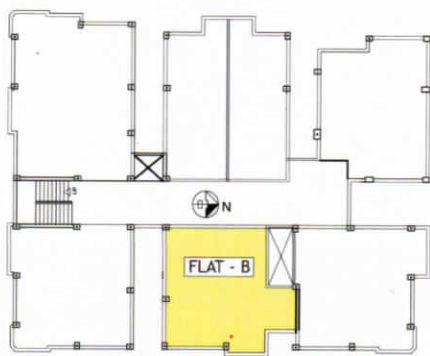
Block - 2



|                        |               |
|------------------------|---------------|
| ▶ FLAT TYPE            | FLAT - A      |
| ▶ BUILT- UP AREA       | 655.00 SQ.FT. |
| ▶ SUPER BUILT- UP AREA | 819.00 SQ.FT. |

FLAT - A/1,A/2,A/3,A/4,A/5,A/6

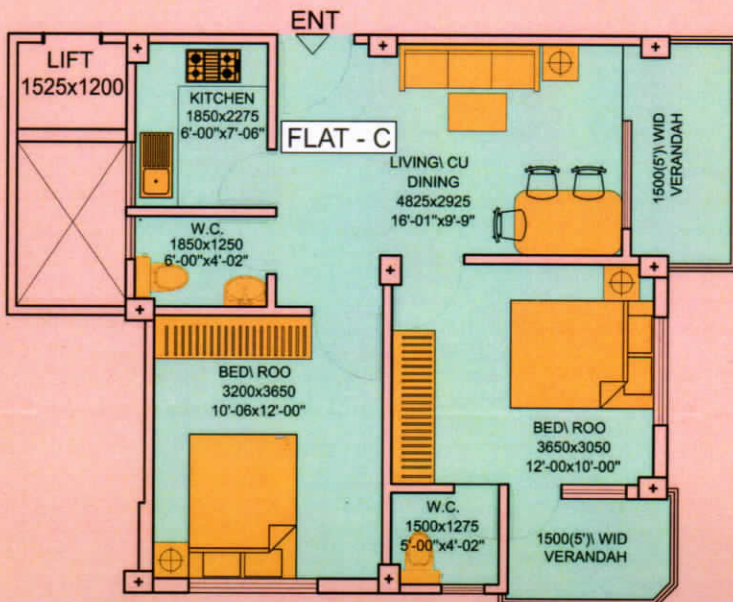
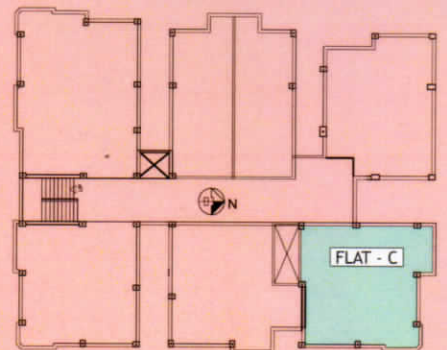
Block - 2



|                        |               |
|------------------------|---------------|
| ▶ FLAT TYPE            | FLAT - B      |
| ▶ BUILT- UP AREA       | 747.00 SQ.FT. |
| ▶ SUPER BUILT- UP AREA | 934.00 SQ.FT. |

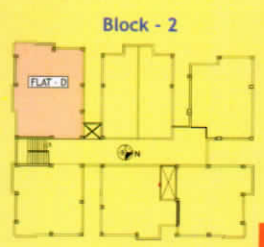
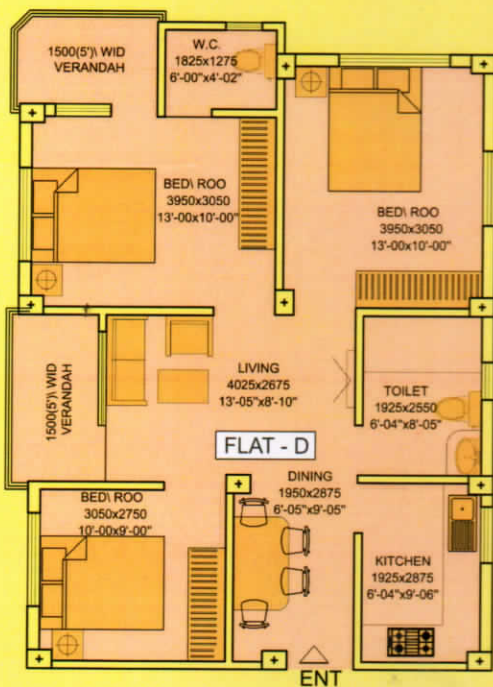
FLAT - B/1,B/2,B/3,B/4,B/5,B/6

Block - 2



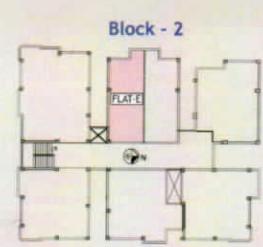
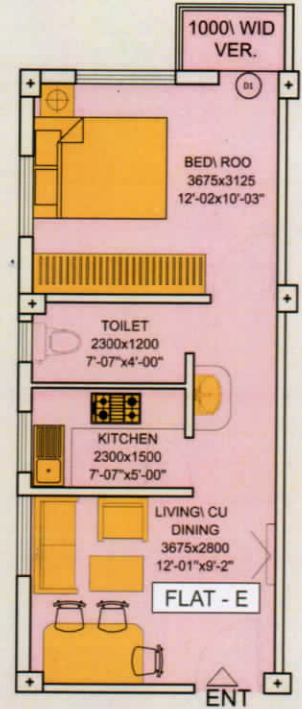
|                        |               |
|------------------------|---------------|
| ▶ FLAT TYPE            | FLAT - C      |
| ▶ BUILT- UP AREA       | 667.00 SQ.FT. |
| ▶ SUPER BUILT- UP AREA | 834.00 SQ.FT. |

FLAT - C/1,C/2,C/3,C/4,C/5,C/6



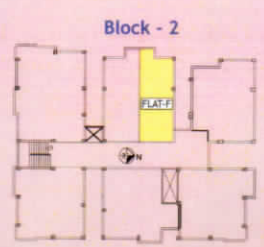
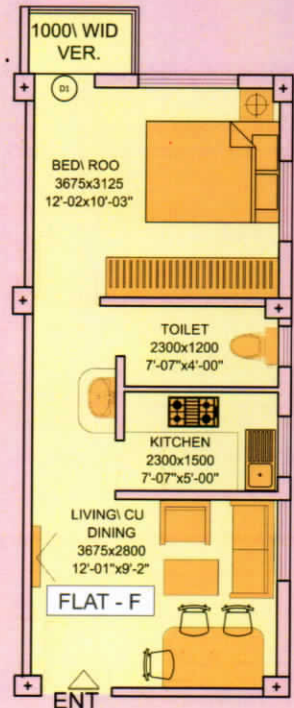
- ▶ **FLAT TYPE**  
**FLAT - D**
- ▶ **BUILT- UP AREA**  
**856.00 SQ.FT.**
- ▶ **SUPER BUILT- UP AREA**  
**1070.00 SQ.FT.**

**FLAT - D/1,D/2,D/3,D/4,D/5,D/6**



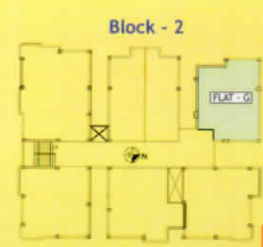
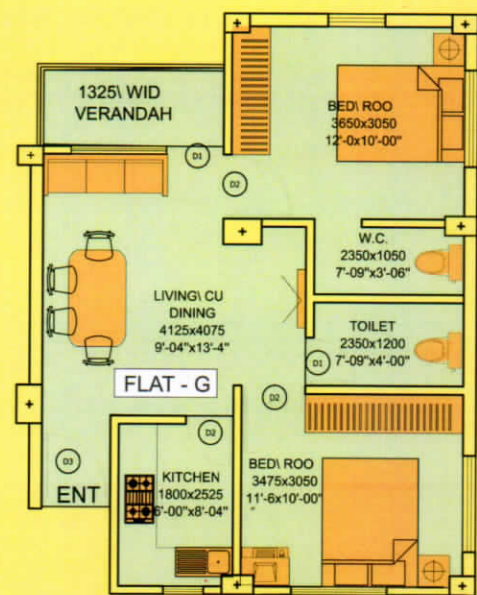
- ▶ **FLAT TYPE**  
**FLAT - E**
- ▶ **BUILT- UP AREA**  
**420.00 SQ.FT.**
- ▶ **SUPER BUILT- UP AREA**  
**525.00 SQ.FT.**

**FLAT - E/1,E/2,E/3,E/4,E/5,E/6**



- ▶ **FLAT TYPE**  
**FLAT - F**
- ▶ **BUILT- UP AREA**  
**420.00 SQ.FT.**
- ▶ **SUPER BUILT- UP AREA**  
**525.00 SQ.FT.**

**FLAT - F/1,F/2,F/3,F/4,F/5,F/6**

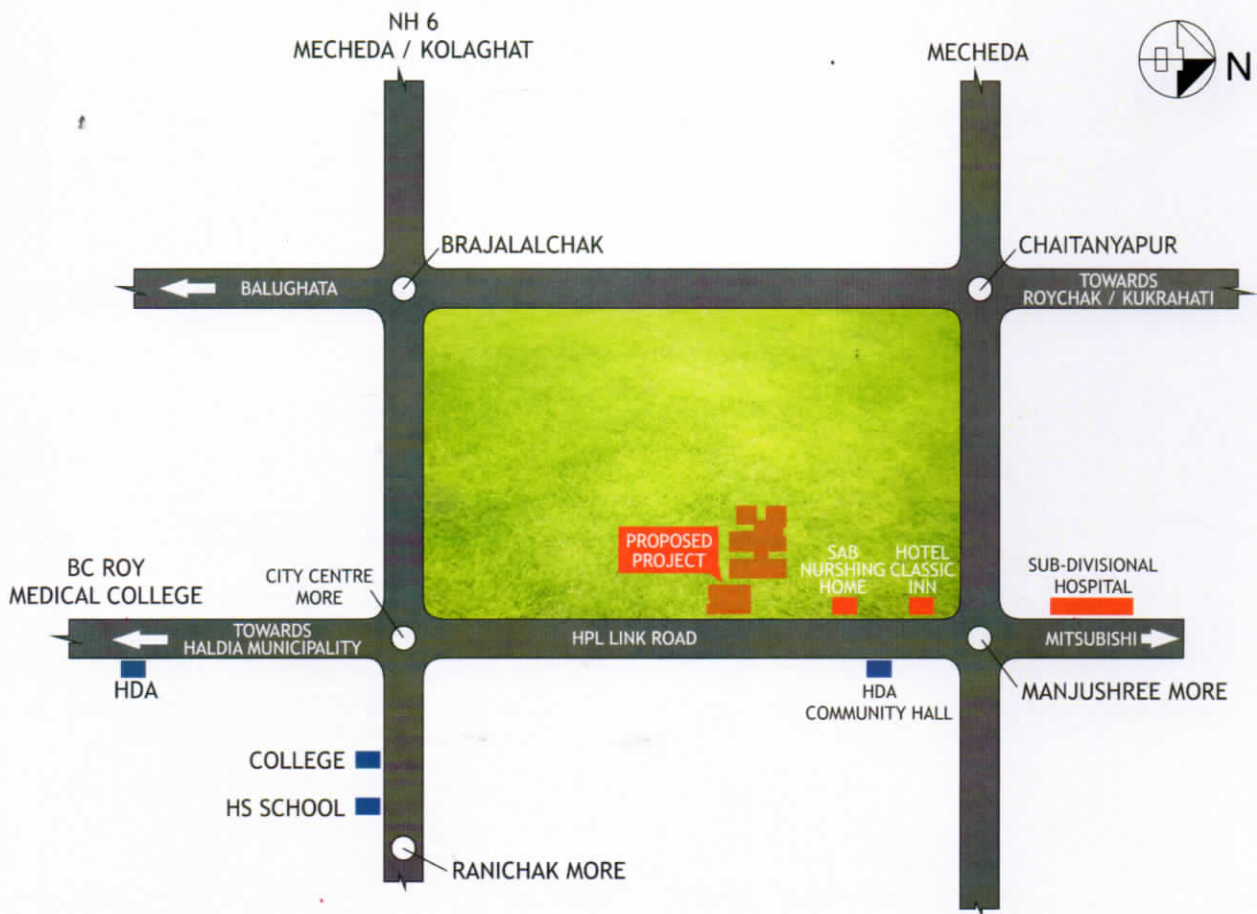


- ▶ **FLAT TYPE**  
**FLAT - G**
- ▶ **BUILT- UP AREA**  
**656.00 SQ.FT.**
- ▶ **SUPER BUILT- UP AREA**  
**820.00 SQ.FT.**

**FLAT - G/1,G/2,G/3,G/4,G/5,G/6**



## LOCATION MAP



**CONTACT NO:**

**03224-272631 / 9233718254**

**an initiation of**

**Rupam Agrotech Pvt. Ltd.**

Akash Ganga Commercial Complex  
Stall No. 24, Manjushree, Haldia  
Purba Medinipur, Pin - 721602