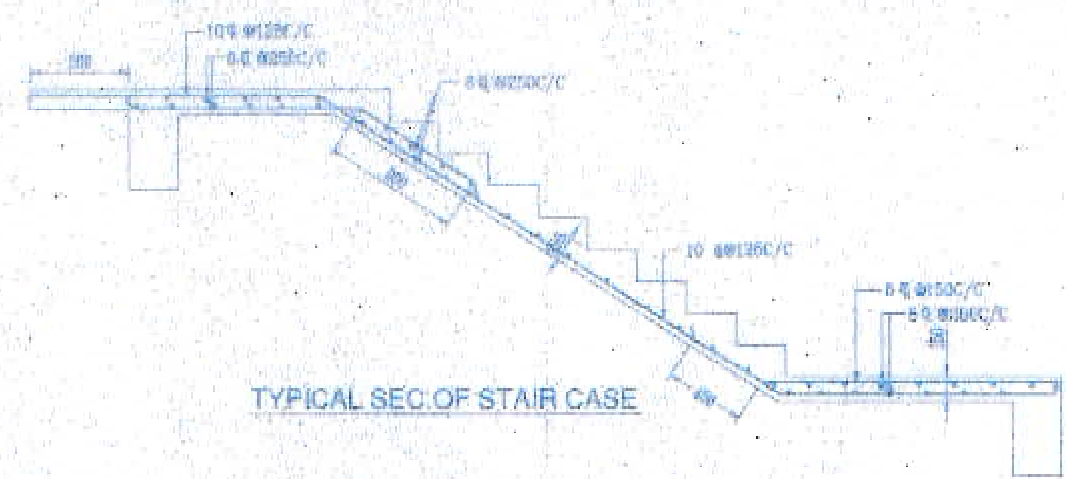


(TYPL) BEAM SCHEDULE (CONC.GR.M30) (BLOCK-1)

BEAM MKD.	BEAM SIZE		REINFT. AT LEFT SUPPT.		REINFT. AT SPAN		REINFT. AT RIGHT SUPPT.		STIRRUPS	
	WIDE	DEPTH	TOP	BOTTOM	TOP	BOTTOM	TOP	BOTTOM	SUPPORT	SPAN
B1	250	500/600	3-16@2-100	3-16@2-100	2-16@2-100	3-16@2-100	3-16@2-100	3-16@2-100	8@100/C	8@150/C
B2	250	500/750	3-20@2-100	3-20@2-100	2-20@2-100	3-20@2-100	3-20@2-100	3-20@2-100	10@100/C	10@200/C
B3	250	500	3-16@2-100	3-16@2-100	2-16@2-100	3-16@2-100	3-16@2-100	8@100/C	8@150/C	
B4	250	500/750	3-20@2-100	3-20@2-100	2-20@2-100	3-20@2-100	3-20@2-100	10@100/C	10@200/C	
B5	250	500/750	3-20@2-100	3-20@2-100	2-20@2-100	3-20@2-100	3-20@2-100	10@100/C	10@200/C	
B6A	250	500/750	3-25@2-100	3-25@2-100	2-25@2-100	3-25@2-100	3-25@2-100	10@100/C	10@200/C	
B6	250	500/750	3-25@2-100	3-25@2-100	2-25@2-100	3-25@2-100	3-25@2-100	10@100/C	10@200/C	
B7	250	600	3-20@2-100	3-20@2-100	2-20@2-100	3-20@2-100	3-20@2-100	8@100/C	8@200/C	
B8	250	750	3-25@2-100	3-25@2-100	2-25@2-100	3-25@2-100	3-25@2-100	10@100/C	10@200/C	
B9	150	300	2-16@2-100	2-16@2-100	2-16@2-100	2-16@2-100	2-16@2-100	8@100/C	8@150/C	
B10	250	500	3-16@2-100	3-16@2-100	2-16@2-100	3-16@2-100	3-16@2-100	8@100/C	8@200/C	

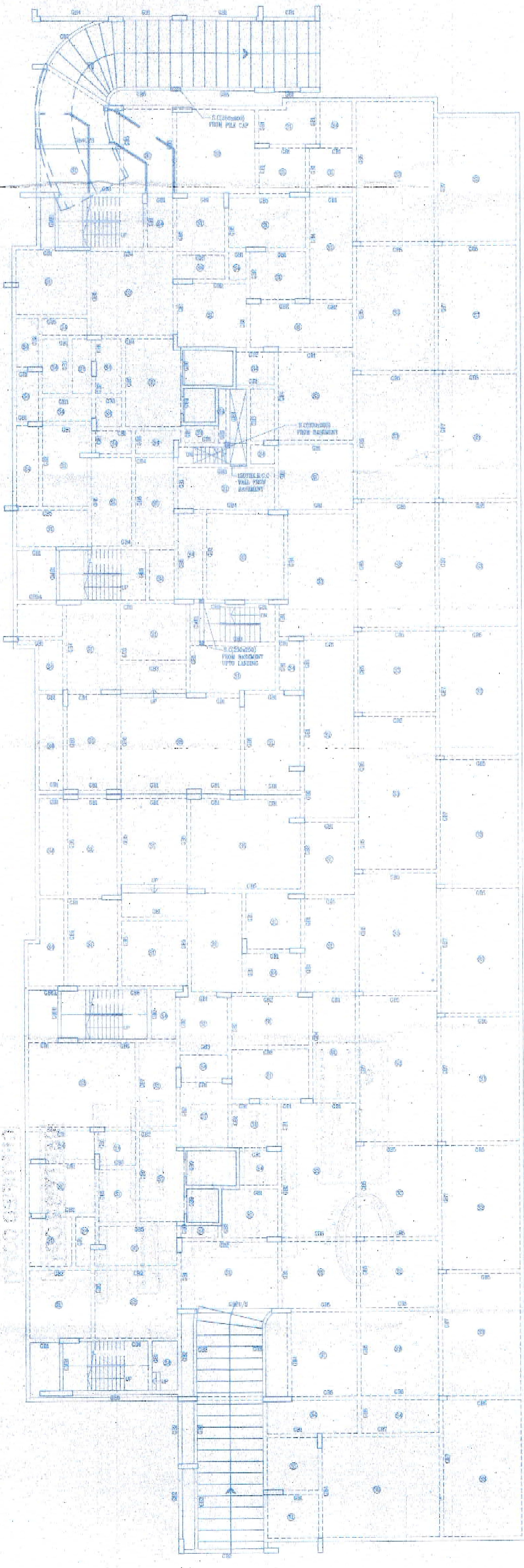
(TYPL) SLAB SCHEDULE (BL-1,2&3)

SLAB MKD.	DEPTH	REINFT. AT SHORTER SPAN		REINFT. AT LONGER SPAN	
		TOP	BOTTOM	TOP	BOTTOM
S1	115	8@100/C ST 8@100/C C/D	8@100/C ST 8@100/C C/D	8@100/C ST 8@100/C C/D	8@100/C ST 8@100/C C/D
S2	120	8@100/C ST 8@100/C C/D	8@100/C ST 8@100/C C/D	8@100/C ST 8@100/C C/D	8@100/C ST 8@100/C C/D
S3	115	8@100/C ST 8@100/C C/D	8@100/C ST 8@100/C C/D	8@100/C ST 8@100/C C/D	8@100/C ST 8@100/C C/D
S4	115	8@100/C ST 8@100/C C/D	8@100/C ST 8@100/C C/D	8@100/C ST 8@100/C C/D	8@100/C ST 8@100/C C/D
S5	125	8@100/C ST 8@100/C C/D	8@100/C ST 8@100/C C/D	8@100/C ST 8@100/C C/D	8@100/C ST 8@100/C C/D
S6	125	8@100/C ST 8@100/C C/D	8@100/C ST 8@100/C C/D	8@100/C ST 8@100/C C/D	8@100/C ST 8@100/C C/D
S7	130	8@100/C ST 8@100/C C/D	8@100/C ST 8@100/C C/D	8@100/C ST 8@100/C C/D	8@100/C ST 8@100/C C/D
S8	150	10@100/C ST 10@100/C C/D	10@100/C ST 10@100/C C/D	10@100/C ST 10@100/C C/D	10@100/C ST 10@100/C C/D
S9	150	10@100/C ST 10@100/C C/D	10@100/C ST 10@100/C C/D	10@100/C ST 10@100/C C/D	10@100/C ST 10@100/C C/D
S10	175	12@100/C ST 12@100/C C/D	12@100/C ST 12@100/C C/D	12@100/C ST 12@100/C C/D	12@100/C ST 12@100/C C/D



GR. FLOOR SLAB SCHEDULE (BL-1&2)

SLAB MKD.	DEPTH	REINFT. AT SHORTER SPAN		REINFT. AT LONGER SPAN	
		TOP	BOTTOM	TOP	BOTTOM
S1	145	10@100/C ST 10@100/C C/D	10@100/C ST 10@100/C C/D	10@100/C ST 10@100/C C/D	10@100/C ST 10@100/C C/D
S2	175	12@100/C ST 12@100/C C/D	12@100/C ST 12@100/C C/D	12@100/C ST 12@100/C C/D	12@100/C ST 12@100/C C/D
S3	150	10@100/C ST 10@100/C C/D	10@100/C ST 10@100/C C/D	10@100/C ST 10@100/C C/D	10@100/C ST 10@100/C C/D
S4	200	12@100/C ST 12@100/C C/D	12@100/C ST 12@100/C C/D	12@100/C ST 12@100/C C/D	12@100/C ST 12@100/C C/D
S5	225	12@100/C ST 12@100/C C/D	12@100/C ST 12@100/C C/D	12@100/C ST 12@100/C C/D	12@100/C ST 12@100/C C/D



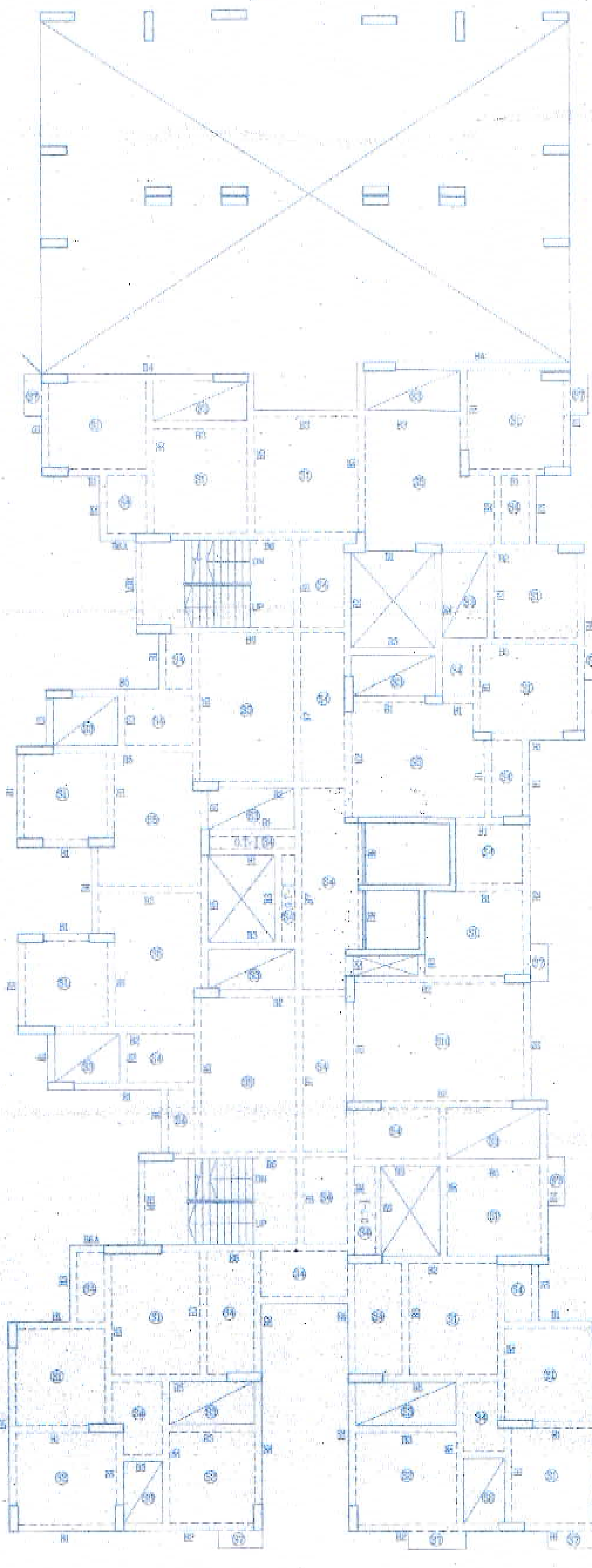
GROUND FLOOR BEAM LAYOUT (BLOCK-1&2)

(GROUND FLOOR) BEAM SCHEDULE (CONC.GR.M30) (BLOCK-1)

BEAM MKD.	BEAM SIZE		REINFT. AT LEFT SUPPT.		REINFT. AT SPAN		REINFT. AT RIGHT SUPPT.		STIRRUPS	
	WIDE	DEPTH	TOP	BOTTOM	TOP	BOTTOM	TOP	BOTTOM	SUPPORT	SPAN
B01	250	500/600	3-20@2-100	3-20@2-100	2-20@2-100	3-20@2-100	3-20@2-100	3-20@2-100	10@100/C	10@150/C
B02	250	500/750	3-25@2-100	3-25@2-100	2-25@2-100	3-25@2-100	3-25@2-100	3-25@2-100	10@100/C	10@200/C
B03	250	500	3-20@2-100	3-20@2-100	2-20@2-100	3-20@2-100	3-20@2-100	10@100/C	10@150/C	
B04	250	500/750	3-25@2-100	3-25@2-100	2-25@2-100	3-25@2-100	3-25@2-100	10@100/C	10@200/C	
B05	250	500/750	3-25@2-100	3-25@2-100	2-25@2-100	3-25@2-100	3-25@2-100	10@100/C	10@200/C	
B06A	250	500/750	3-25@2-100	3-25@2-100	2-25@2-100	3-25@2-100	3-25@2-100	10@100/C	10@200/C	
B06	250	500/750	3-25@2-100	3-25@2-100	2-25@2-100	3-25@2-100	3-25@2-100	10@100/C	10@200/C	
B07	250	600	3-25@2-100	3-25@2-100	2-25@2-100	3-25@2-100	3-25@2-100	10@100/C	10@200/C	
B08	250	750	3-25@2-100	3-25@2-100	2-25@2-100	3-25@2-100	3-25@2-100	10@100/C	10@200/C	
B09	150	300	2-20@2-100	2-20@2-100	2-20@2-100	2-20@2-100	2-20@2-100	8@100/C	8@150/C	
B10	250	500	3-20@2-100	3-20@2-100	2-20@2-100	3-20@2-100	3-20@2-100	10@100/C	10@200/C	

(GROUND FLOOR) BEAM SCHEDULE (CONC.GR.M30) (BLOCK-2)

BEAM MKD.	BEAM SIZE		REINFT. AT LEFT SUPPT.		REINFT. AT SPAN		REINFT. AT RIGHT SUPPT.		STIRRUPS	
	WIDE	DEPTH	TOP	BOTTOM	TOP	BOTTOM	TOP	BOTTOM	SUPPORT	SPAN
B01	250	600	3-20@2-100	3-20@2-100	2-20@2-100	3-20@2-100	3-20@2-100	3-20@2-100	10@100/C	10@200/C
B02	250	600	3-20@2-100	3-20@2-100	2-20@2-100	3-20@2-100	3-20@2-100	10@100/C	10@150/C	
B03	250	500	3-20@2-100	3-20@2-100	2-20@2-100	3-20@2-100	3-20@2-100	10@100/C	10@200/C	
B04A	250	750	3-25@2-100	3-25@2-100	2-25@2-100	3-25@2-100	3-25@2-100	10@100/C	10@200/C	
B04	250	750	3-25@2-100	3-25@2-100	2-25@2-100	3-25@2-100	3-25@2-100	10@100/C	10@200/C	
B05A	250	750	3-25@2-100	3-25@2-100	2-25@2-100	3-25@2-100	3-25@2-100	10@100/C	10@200/C	
B05	250	750	3-25@2-100	3-25@2-100	2-25@2-100	3-25@2-100	3-25@2-100	10@100/C	10@200/C	
B06	250	750	3-25@2-100	3-25@2-100	2-25@2-100	3-25@2-100	3-25@2-100	10@100/C	10@200/C	
B07	250	750	3-25@2-100	3-25@2-100	2-25@2-100	3-25@2-100	3-25@2-100	10@100/C	10@200/C	
B08	150	300	2-20@2-100	2-20@2-100	2-20@2-100	2-20@2-100	2-20@2-100	8@100/C	8@150/C	
B09	250	600	3-20@2-100	3-20@2-100	2-20@2-100	3-20@2-100	3-20@2-100	10@100/C	10@200/C	



FIRST FLOOR BEAM LAYOUT (BLOCK-1)

NOTES:-  
 1. ALL DIMENSIONS ARE IN MM UNLESS OTHERWISE MENTIONED.  
 2. SUPER STRUCTURE SUPER STRUCTURE SHALL BE OF 1ST CLASS.  
 3. ALL GRADE OF CONCRETE AS SPECIFIED.  
 4. ALL MATERIALS SHALL CONFORM TO RELEVANT IS CODES.  
 5. FOR STEEL GRADE IS 50D AS PER IS 1786-1979.  
 6. LAP SPICES & BOND LENGTH SHALL BE 50 D WHERE 'D' IS THE SMALLEST BAR DIA.  
 7. FOUNDATION & PLINTH BENCHING IN FOUNDATION & PLINTH SHALL BE OF 1ST CLASSWORK BY LG CODES NUMBER.  
 8. WHENEVER CLEAR CONC. TO MAIN REINFORCEMENT IS AS FOLLOWS:

MEMBER	TOP	BOTTOM	SIDE
1. FOUNDATION BEAM & SLAB	50	50	50
2. COLUMN	50	50	50
3. FLOOR BEAM	50	50	50
4. T.C. BEAM	20	20	50
5. FLOOR SLAB	20	20	20

APPROVED BY: [Signature]  
 PROJECT ENGINEER

APPROVED BY: [Signature]  
 CIVIL ENGINEER

APPROVED BY: [Signature]  
 ARCHITECT

CERTIFICATE OF ARCHITECT  
 THIS IS TO CERTIFY THAT THE STRUCTURAL DESIGN AND DRAWING OF BOTH FOUNDATION AND SUPER STRUCTURE OF THE BUILDING HAS BEEN MADE BY ME CONSIDERING ALL POSSIBLE LOADS INCLUDING THE SEISMIC LOADS FOR THE NATIONAL BUILDING CODE OF INDIA AND CERTIFIED THAT IT IS SAFE AND SOUND IN ALL RESPECTS.

[Signature]  
 S. P. AGRAWAL  
 ARCHITECT  
 REG. NO. 10418/2002  
 REG. NO. 10418/2002

CERTIFICATE OF ARCHITECT  
 I DO HEREBY CERTIFY WITH FULL RESPONSIBILITY THAT THE BUILDING PLAN HAS BEEN DRAWN UP AS PER R.S.C. BUILDING PLAN - 2008 AS MODIFIED FROM 1947 TO 1987 THAT THE WORK OF THE BUILDING SHALL CONFORM WITH THE PLAN AND IT IS A BUILDABLE SITE NOT A TANK OR A POND OR A LAKE OR A SITE PLAN. LOCATION PLAN SHALL BE WITH THE SITE. THE PLAN IS GOVERNED BY MUNICIPALITY & REGULATIONS TALKS WITH THE ROAD. DEED PLAN THE EXISTING STRUCTURE, AS SHOWN FULLY OCCUPIED BY OWNERS AS PER OWNERS DOCUMENTS.

[Signature]  
 S. P. AGRAWAL  
 ARCHITECT  
 REG. NO. 10418/2002  
 REG. NO. 10418/2002

CERTIFICATE OF ARCHITECT  
 I DO HEREBY CERTIFY WITH FULL RESPONSIBILITY THAT THE BUILDING PLAN HAS BEEN DRAWN UP AS PER R.S.C. BUILDING PLAN - 2008 AS MODIFIED FROM 1947 TO 1987 THAT THE WORK OF THE BUILDING SHALL CONFORM WITH THE PLAN AND IT IS A BUILDABLE SITE NOT A TANK OR A POND OR A LAKE OR A SITE PLAN. LOCATION PLAN SHALL BE WITH THE SITE. THE PLAN IS GOVERNED BY MUNICIPALITY & REGULATIONS TALKS WITH THE ROAD. DEED PLAN THE EXISTING STRUCTURE, AS SHOWN FULLY OCCUPIED BY OWNERS AS PER OWNERS DOCUMENTS.

[Signature]  
 S. P. AGRAWAL  
 ARCHITECT  
 REG. NO. 10418/2002  
 REG. NO. 10418/2002

PROJECT  
 PROPOSED (B-G-XII) STORED RESIDENTIAL BUILDING AT PRE. NO. 24, DIAMOND HARBOUR ROAD, KOLKATA

TITLE  
 CORPORATION DRAWING (BL-1&2)

ARCHITECTS  
 AGRAWAL & AGRAWAL  
 KOLKATA

STRUCTURAL ENGINEERS  
 S.P.A CONSULTANTS  
 51, RAM KRISHNA HUTTA ROAD  
 KOLKATA 700005, PHONE - 49781/49782  
 E-MAIL: spa\_consultants@yahoo.co.in, 724 470 3888

DRAWN BY: AS  
 CHECKED BY: S.P.  
 DATE: 10/09/16  
 SCALE: 1:100/20  
 DRG. NO.: 08-102