

LAT= 21°37'39.86"N  
LONG= 87°31'46.32"E

LAT= 21°37'39.75"N  
LONG= 87°31'48.55"E

LAT= 21°37'39.52"N  
LONG= 87°31'48.51"E

LAT= 21°37'39.43"N  
LONG= 87°31'48.41"E

LAT= 21°37'38.94"N  
LONG= 87°31'48.41"E

LAT= 21°37'38.91"N  
LONG= 87°31'48.09"E

LAT= 21°37'38.78"N  
LONG= 87°31'48.02"E

LAT= 21°37'38.71"N  
LONG= 87°31'47.53"E

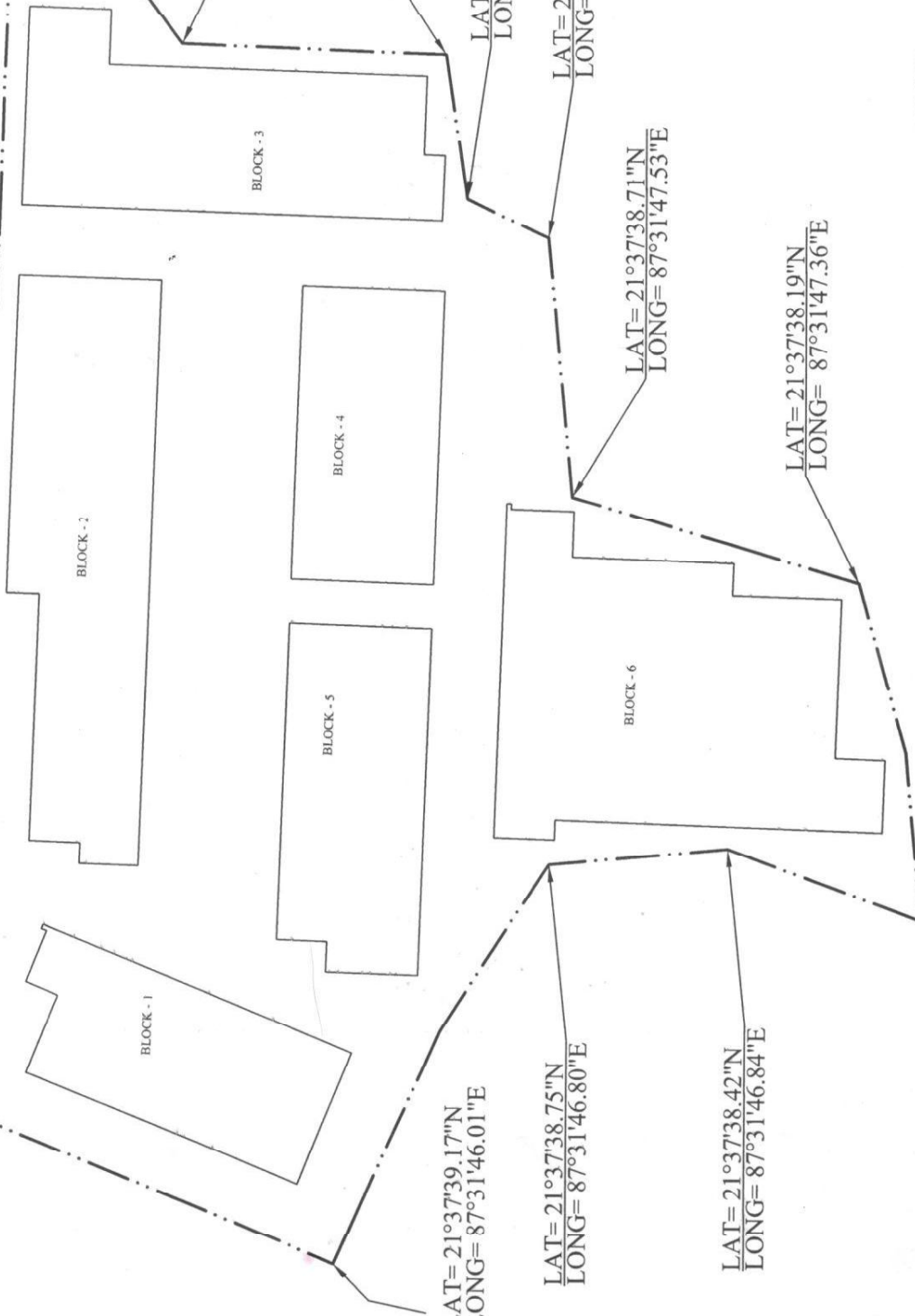
LAT= 21°37'38.19"N  
LONG= 87°31'47.36"E

LAT= 21°37'38.07"N  
LONG= 87°31'46.70"E

LAT= 21°37'38.42"N  
LONG= 87°31'46.84"E

LAT= 21°37'39.17"N  
LONG= 87°31'46.01"E

LAT= 21°37'38.75"N  
LONG= 87°31'46.80"E



PROJECT: SN CONSULTANTS PVT. LTD. INDUSTRIAL COMPLEX AT B.S. & C.A. ROAD NO. 202, MOULALI, GOENDBARASAN, J.I. NO-89, POHATHAN NO-518, NEAR MOHAN GOSHAL, 3517, EAST MUMBAI.	
TITLE: LONGITUDINE & LATITUDE PLAN	
DRG. NO.	140/P1/COM/75/21
SCALE	1:100
DATE	14/03/2019
DESIGNED BY	RAJESH
CHECKED BY	SAJAYAN
APPROVED BY	RAJESH
DATE	
COMPUTATION	
DECLARATION OF OWNER & ARCHITECT (I CERTIFY THAT THE BUILDING PLAN HAS BEEN DRAWN UP AS PER PROVISION OF R.A.M.A.N.G.A.B. AND THE DUTY IS UNDERTAKEN FROM TIME TO TIME.	
SIGNATURE OF ARCHITECT	
SIGNATURE OF OWNER SN CONSULTANTS PVT. LTD.	
ARCHITECT RADIANT	
CA. NO. 207818, 843 T LAK KOLKATA - 700064	
THIS DRAWING IS A PRIVATE AND CONFIDENTIAL DOCUMENT AND IT MUST NOT BE COPIED OR REPRODUCED WITHOUT THE CONSENT OF THE ARCHITECT.	

For SN CONSULTANTS PVT. LTD.  
*Subrata Nayak*  
Director / Authorised Signatory