



K. SEAL & ASSOCIATES

22A, Raja Naba Krishna Street, Kolkata - 700 005
 (Near Jaipuria College)

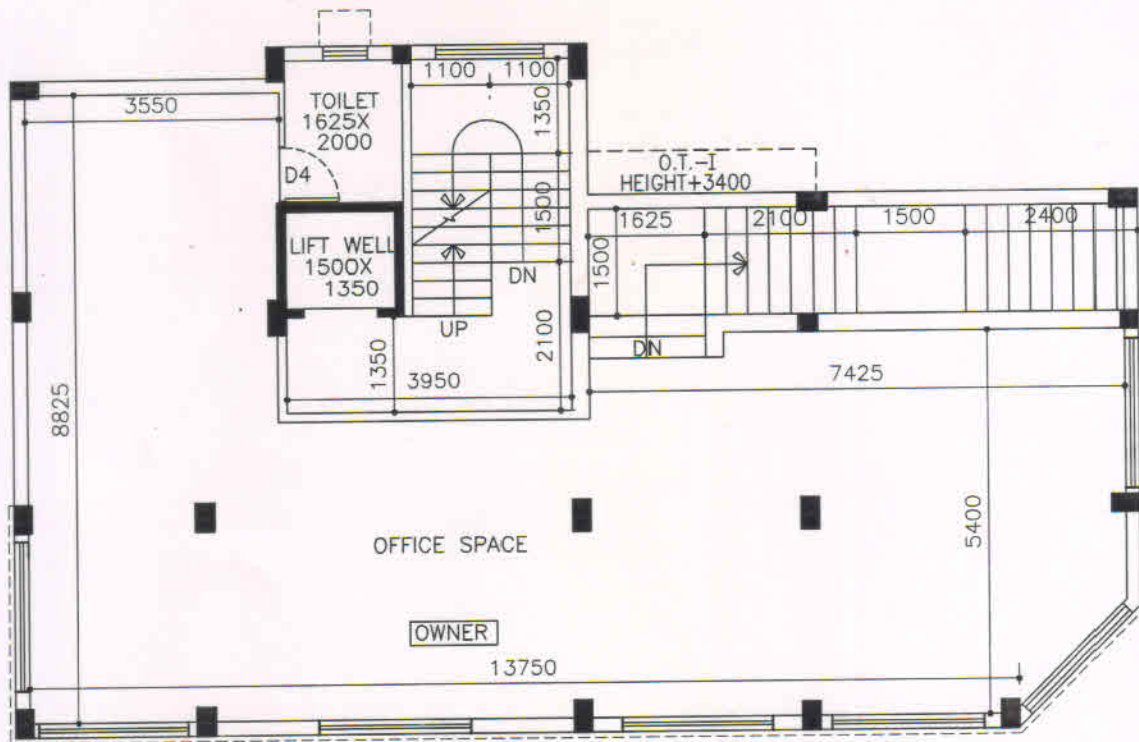
Ref. No. _____ Date _____
AREA STATEMENT PLAN OF OFFICE SPACE OF GROUND + FOUR STORIED RESIDENTIAL BUILDING AT PREMISES NO:- 2/1A, SIBDAS BHADURI STREET, KOLKATA-700004, IN WARD:-11, BOROUGH-II, P.S.- SHYAMPUKUR. WITHIN THE KOLKATA MUNICIPAL CORPORATION.



N

SCALE-1:100

AREA STATEMENT			
MKD.	CARPET AREA (SFT.)	BALCONY AREA (SFT.)	C.B. AREA (SFT.)
OFFICE SPACE	968 SFT.	--- SFT.	-- SFT.



SHIBDAS BHADURI STREET
 (K. M. C. ROAD)

For K. SEAL & ASSOCIATES
Kamalesh Seal
 Proprietor

FIRST FLOOR PLAN OF OFFICE SPACE



KAMALESH SEAL, B. Tech (Civil)
 L.B.S. No.- 1020 (Class-I)
 The Kolkata Municipal Corporation

ARCHITECTS

ENGINEERS

CONSULTANTS