



K. SEAL & ASSOCIATES

22A, Raja Naba Krishna Street, Kolkata - 700 005
 (Near Jaipuria College)

Ref. No.

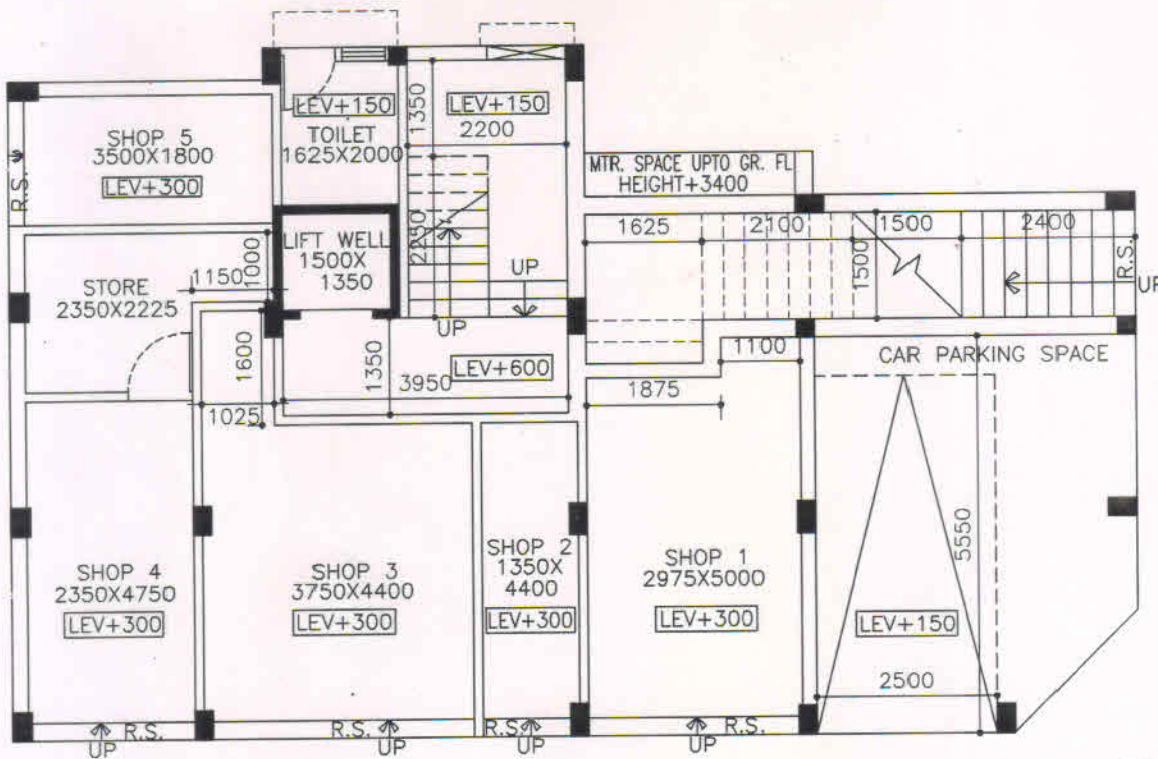
Date

AREA STATEMENT PLAN OF CAR PARKING OF GROUND + FOUR
 STORIED RESIDENTIAL BUILDING AT PREMISES NO:- 2/1A, SIBDAS
 BHADURI STREET, KOLKATA-700004, IN WARD:-11, BOROUGH-II,
 P.S.- SHYAMPUKUR. WITHIN THE KOLKATA MUNICIPAL
 CORPORATION.



N

SCALE-1:100



AREA STATEMENT	
MKD.	CARPET AREA (SFT.)
CAR PARKING	248 SFT.
SHOP 1	166 SFT.
SHOP 2	63 SFT.
SHOP 3	194 SFT.
SHOP 4	120 SFT.
SHOP 5	71 SFT.
STORE	68 SFT.

SHIBDAS BHADURI STREET
 (K. M. C. ROAD)

GROUND FLOOR PLAN OF SHOP & CAR PARKING

For K. SEAL & ASSOCIATES

Kamlesh Seal

Proprietor

KAMALESH SEAL, B. Tech (Civil)

L.B.S. No.:- 1020 (Class-I)

The Kolkata Municipal Corporation



ARCHITECTS

ENGINEERS

CONSULTANTS