

NOTES:

1. DIMENSIONS ARE IN MM UNLESS OTHERWISE MENTIONED.
2. ALL EXTERNAL WALLS ARE 200MM THK & INTERNAL WALLS ARE 125MM THK UNLESS OTHERWISE MENTIONED. M:1:4.
3. ALL CHIMNEYS ARE 75 MM THK & 600 MM PROJECTED.
4. DEPTH OF UNDERGROUND WATER RESERVOIR SHOULD NOT BE LESS THAN 1000 MM FROM FINISHED FLOOR GRADE OF CONCRETE & GRADE OF STEEL USED ARE M20 & FE415 RESPECTIVELY.
5. FINISHES ARE AS PER SCHEDULE.
6. GOVERNMENT APPROVAL OF MATERIALS & WORKMANSHIP SHALL BE OBTAINED.
7. ANY DISCREPANCY IN SCALE THE WRITTEN DIMENSION SHALL PREVAIL.
8. OPEN TERRACE WITH LIME TERRACING OF RATIO 2:2:7.
9. DRAIN PROOF COURSE TO BE PROVIDED WITH P.S.C (1:2:4).
10. DRAIN PROOF COURSE TO BE PROVIDED WITH P.S.C (1:2:4).

SCHEDULE OF DOORS AND WINDOWS

NO.	WIDTH	HEIGHT	PERIODIC WORK
1	1200	2100	1
2	1200	1800	1
3	1200	1800	1
4	1200	1800	1
5	1200	1800	1
6	1200	1800	1
7	1200	1800	1
8	1200	1800	1
9	1200	1800	1
10	1200	1800	1
11	1200	1800	1
12	1200	1800	1
13	1200	1800	1
14	1200	1800	1
15	1200	1800	1
16	1200	1800	1
17	1200	1800	1
18	1200	1800	1
19	1200	1800	1
20	1200	1800	1
21	1200	1800	1
22	1200	1800	1
23	1200	1800	1
24	1200	1800	1
25	1200	1800	1
26	1200	1800	1
27	1200	1800	1
28	1200	1800	1
29	1200	1800	1
30	1200	1800	1
31	1200	1800	1
32	1200	1800	1
33	1200	1800	1
34	1200	1800	1
35	1200	1800	1
36	1200	1800	1
37	1200	1800	1
38	1200	1800	1
39	1200	1800	1
40	1200	1800	1
41	1200	1800	1
42	1200	1800	1
43	1200	1800	1
44	1200	1800	1
45	1200	1800	1
46	1200	1800	1
47	1200	1800	1
48	1200	1800	1
49	1200	1800	1
50	1200	1800	1
51	1200	1800	1
52	1200	1800	1
53	1200	1800	1
54	1200	1800	1
55	1200	1800	1
56	1200	1800	1
57	1200	1800	1
58	1200	1800	1
59	1200	1800	1
60	1200	1800	1
61	1200	1800	1
62	1200	1800	1
63	1200	1800	1
64	1200	1800	1
65	1200	1800	1
66	1200	1800	1
67	1200	1800	1
68	1200	1800	1
69	1200	1800	1
70	1200	1800	1
71	1200	1800	1
72	1200	1800	1
73	1200	1800	1
74	1200	1800	1
75	1200	1800	1
76	1200	1800	1
77	1200	1800	1
78	1200	1800	1
79	1200	1800	1
80	1200	1800	1
81	1200	1800	1
82	1200	1800	1
83	1200	1800	1
84	1200	1800	1
85	1200	1800	1
86	1200	1800	1
87	1200	1800	1
88	1200	1800	1
89	1200	1800	1
90	1200	1800	1
91	1200	1800	1
92	1200	1800	1
93	1200	1800	1
94	1200	1800	1
95	1200	1800	1
96	1200	1800	1
97	1200	1800	1
98	1200	1800	1
99	1200	1800	1
100	1200	1800	1

DECLARATION OF STRUCTURAL ENGINEER:

I DO HEREBY CERTIFY THAT THE ERECTION OF B.G.M. BUILDING NO. 130, N.S.C. BOSE ROAD, WARD NO. 98, BOROLUHA NO. X, KOLKATA - 700061 HAVE BEEN SUPERVISED BY ME AND HAS BEEN COMPLETED ACCORDING TO THE SANCTIONED PLAN AND SPECIFICATIONS. ALL THE MATERIALS AND WORKMANSHIP AND ALL THE MATERIALS QUALITY AND GRADE HAVE BEEN USED STRICTLY IN ACCORDANCE WITH THE SPECIFICATIONS AND DETAILS OF THE SANCTIONED PLAN AND SPECIFICATIONS. NO PROVISION OF P.M.C. BLDG. RULES 2009 HAS BEEN VIOLATED IN COURSE OF THE WORK.

DATE: 02.03.16

THE WORK IS GOING ON IN ACCORDANCE WITH THE SANCTIONED PLAN WITH SOME CHANGES AND TO THE BEST OF MY SATEISFACTION. THE WORKMANSHIP AND ALL THE MATERIALS QUALITY AND GRADE HAVE BEEN USED STRICTLY IN ACCORDANCE WITH THE SPECIFICATIONS AND DETAILS OF THE SANCTIONED PLAN AND SPECIFICATIONS. NO PROVISION OF P.M.C. BLDG. RULES 2009 HAS BEEN VIOLATED IN COURSE OF THE WORK.

DATE: 02.03.16

DECLARATION OF OWNER:

I DO HEREBY CERTIFY THAT THE ERECTION OF B.G.M. BUILDING NO. 130, N.S.C. BOSE ROAD, WARD NO. 98, BOROLUHA NO. X, KOLKATA - 700061 HAVE BEEN SUPERVISED BY ME AND HAS BEEN COMPLETED ACCORDING TO THE SANCTIONED PLAN AND SPECIFICATIONS. ALL THE MATERIALS AND WORKMANSHIP AND ALL THE MATERIALS QUALITY AND GRADE HAVE BEEN USED STRICTLY IN ACCORDANCE WITH THE SPECIFICATIONS AND DETAILS OF THE SANCTIONED PLAN AND SPECIFICATIONS. NO PROVISION OF P.M.C. BLDG. RULES 2009 HAS BEEN VIOLATED IN COURSE OF THE WORK.

DATE: 02.03.16

DECLARATION OF ARCHITECT:

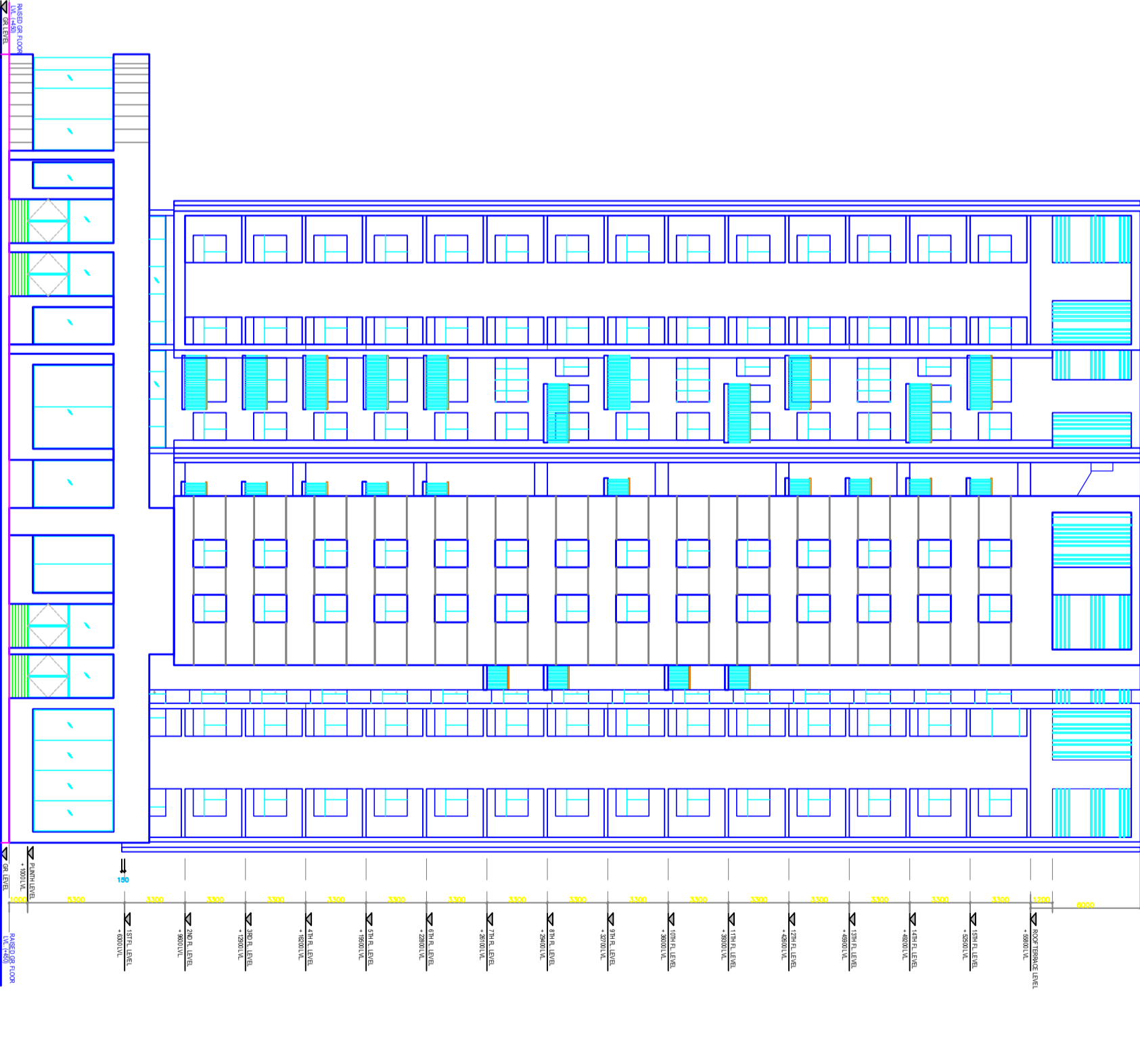
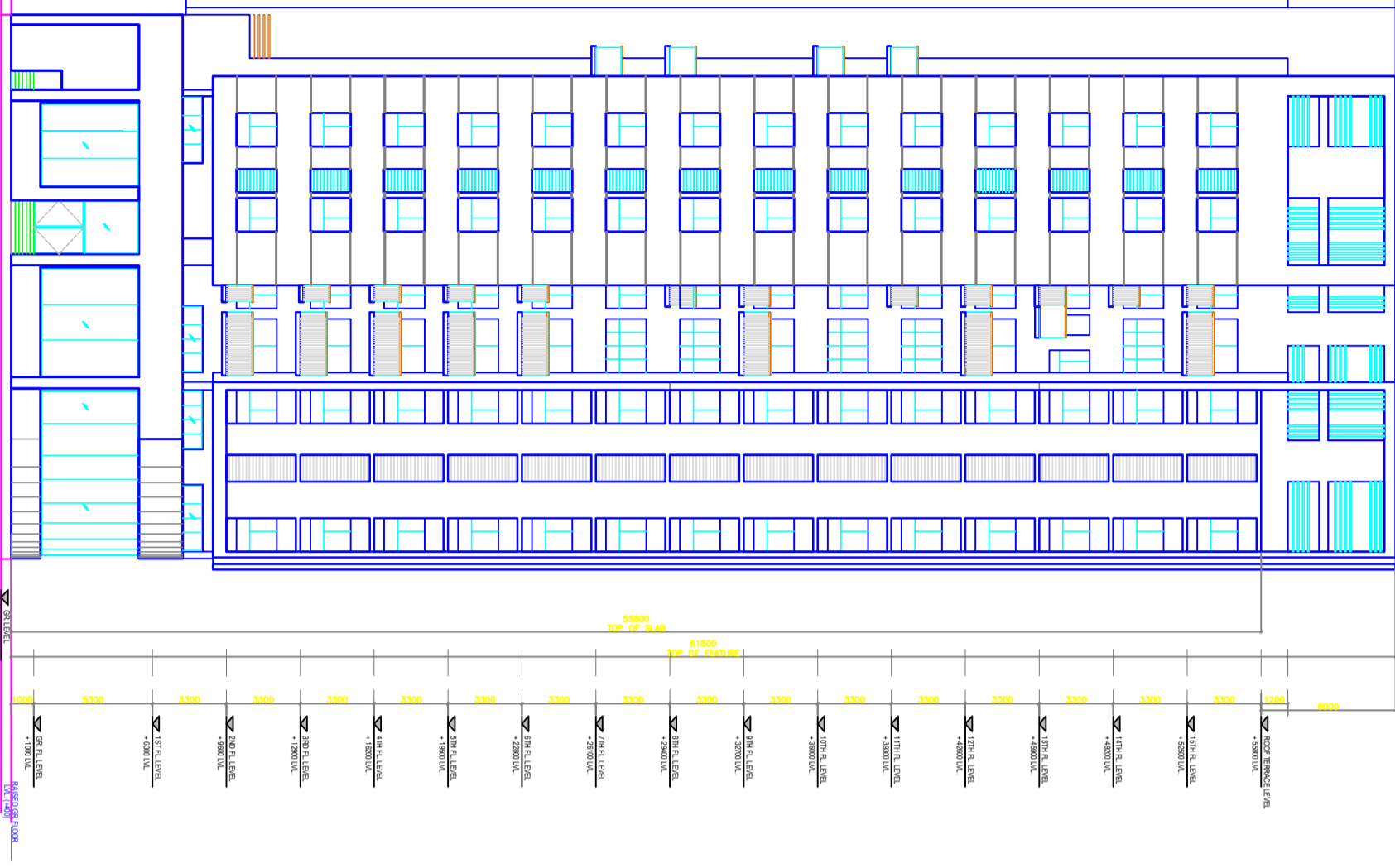
I DO HEREBY CERTIFY WITH FULL RESPONSIBILITY THAT THE BUILDING PLAN HAS BEEN DRAWN UP AS STANDS DEFACTO ON PREMISES NO. 130, N.S.C. BOSE ROAD, WARD NO. 98, BOROLUHA NO. X, KOLKATA - 700061. I HAVE BEEN FULLY AWARE OF ALL THE REGULATIONS AND BY LAWS GOVERNING THE CONSTRUCTION OF BUILDINGS IN KOLKATA AND I HAVE COMPLIED WITH ALL THE REQUIREMENTS THEREOF. I HAVE ALSO OBTAINED ALL THE NECESSARY APPROVALS FROM THE COMPETENT AUTHORITY. I HAVE ALSO OBTAINED ALL THE NECESSARY APPROVALS FROM THE COMPETENT AUTHORITY. I HAVE ALSO OBTAINED ALL THE NECESSARY APPROVALS FROM THE COMPETENT AUTHORITY.

DATE: 02.03.16

SIGNATURE OF ARCHITECT

SIGNATURE OF STRUCTURAL ENGINEER

SIGNATURE OF OWNER



SOUTH-WEST ELEVATION

SOUTH-EAST ELEVATION

TITLE: SOUTH-WEST & SOUTH-EAST ELEVATIONS

ARCHITECT:

MAHESWARI & ASSOCIATES

37A, BAKER ROAD, 2ND FLOOR,

KOLKATA - 700027

Tel: 65334966, www.maheswari.com

PROJECT:

REGULARIZATION PLAN UR- 262(+2b) OF B-G-XV STORED RESIDENTIAL BUILDING OF PREMISES NO. 130, N.S.C. BOSE ROAD, KOLKATA-700040, WARD NO. - 95, BOROLUHA NO.- X, UNDER K.M.C.

SANCTIONED PLAN VNO. NO. - 178

DATED - 18-08-2010 AND REVALDATE FROM 18.08.15 UPTO 17.08.20 BY D.G.BLDG. JON

DATED 02.03.16

SCALE: 1:100

DATE: 01.11.2017

DRG NO: 01

DATE: 01.11.2017