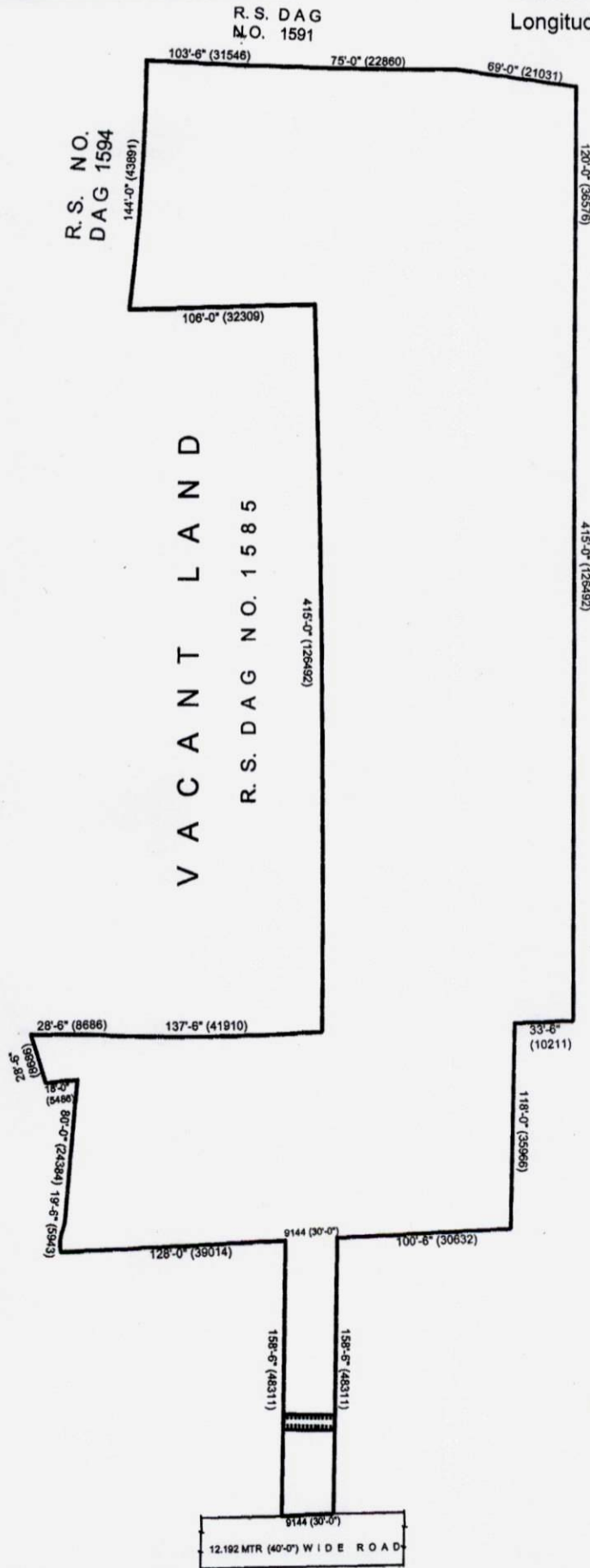


**SITE PLAN OF A LAND SITUATED AT MOUZA : MAHAMMADPUR, JL NO: 32, R.S / L.R
 DAG NOS:1581,1582, 1583, 1584, 1586, 1587, 1492 & 1493 UNDER L.R KHATIAN NOS:
 7/1, 297/1, 1258/1, 1283/1, 1312/1, 1330/1,8134, 8135,8136, 8137, 8138, 8139, 8184, 8185,
 8186,DISTRICT: NORTH 24 PARGANAS , P.S: RAJARHAT, UNDER RAJARHAT
 BISHNUPUR 2 NO GRAM PANCHAYET.**

Latitude : 22° 58' 83" N
 Longitude : 88° 49' 75" E



R. S. NO.
DAG 1594

V A C A N T L A N D

R. S. DAG NO. 1585

MOUZA KALIKAPUR, J.L. NO. 40

D.P.S M E G A C I T Y S C H O O L

REALTECH NIRMAN PVT. LTD.
S. Kishore

Director

SIGNATURE