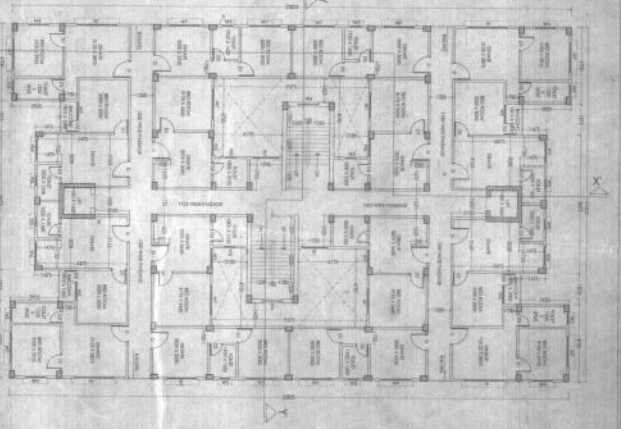
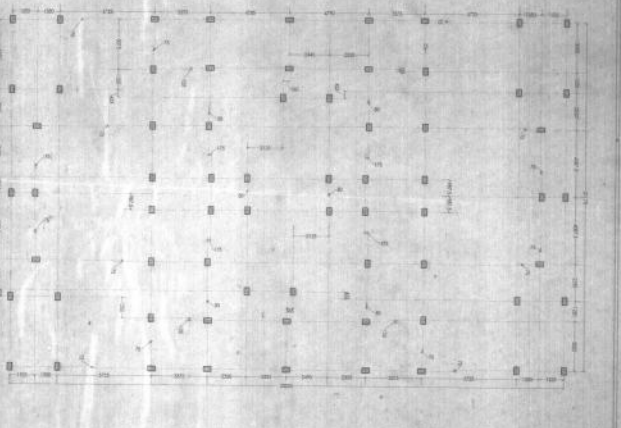


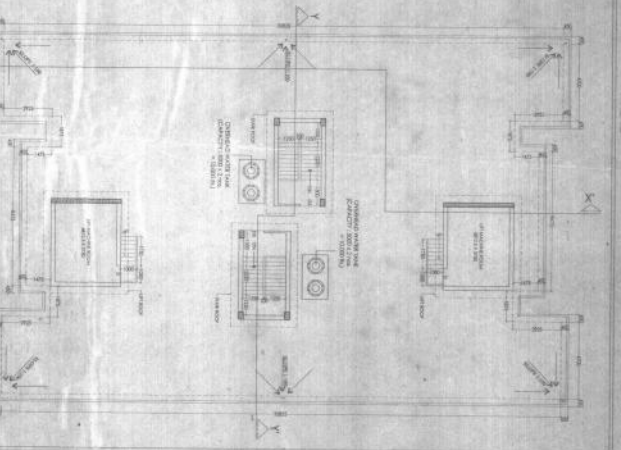
TYPICAL FLOOR PLAN (1ST TO 4TH) OF TYPE - IV
SCALE 1:100



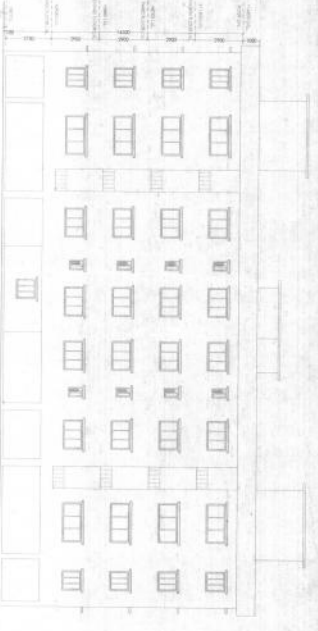
TYPICAL FLOOR PLAN (1ST TO 4TH) OF TYPE - IV
SCALE 1:100



COLUMN LAYOUT OF TYPE - IV
SCALE 1:100



ROOF OF TYPE - IV
SCALE 1:100



WEST SIDE ELEVATION OF TYPE - IV
SCALE 1:100



NORTH SIDE ELEVATION OF TYPE - IV
SCALE 1:100



SOUTH SIDE ELEVATION OF TYPE - IV
SCALE 1:100



SECTION THROUGH X-X' OF TYPE - IV
SCALE 1:100



SECTION THROUGH Y-Y' OF TYPE - IV
SCALE 1:100

SUMMARY OF FINISHED FLOOR LEVELS	
LEVEL	FINISHED FLOOR LEVEL (M)
1	0.00
2	0.15
3	0.30
4	0.45
5	0.60
6	0.75
7	0.90
8	1.05
9	1.20
10	1.35
11	1.50
12	1.65
13	1.80
14	1.95
15	2.10
16	2.25
17	2.40
18	2.55
19	2.70
20	2.85
21	3.00
22	3.15
23	3.30
24	3.45
25	3.60
26	3.75
27	3.90
28	4.05
29	4.20
30	4.35
31	4.50
32	4.65
33	4.80
34	4.95
35	5.10
36	5.25
37	5.40
38	5.55
39	5.70
40	5.85
41	6.00
42	6.15
43	6.30
44	6.45
45	6.60
46	6.75
47	6.90
48	7.05
49	7.20
50	7.35
51	7.50
52	7.65
53	7.80
54	7.95
55	8.10
56	8.25
57	8.40
58	8.55
59	8.70
60	8.85
61	9.00
62	9.15
63	9.30
64	9.45
65	9.60
66	9.75
67	9.90
68	10.05
69	10.20
70	10.35
71	10.50
72	10.65
73	10.80
74	10.95
75	11.10
76	11.25
77	11.40
78	11.55
79	11.70
80	11.85
81	12.00
82	12.15
83	12.30
84	12.45
85	12.60
86	12.75
87	12.90
88	13.05
89	13.20
90	13.35
91	13.50
92	13.65
93	13.80
94	13.95
95	14.10
96	14.25
97	14.40
98	14.55
99	14.70
100	14.85
101	15.00
102	15.15
103	15.30
104	15.45
105	15.60
106	15.75
107	15.90
108	16.05
109	16.20
110	16.35
111	16.50
112	16.65
113	16.80
114	16.95
115	17.10
116	17.25
117	17.40
118	17.55
119	17.70
120	17.85
121	18.00
122	18.15
123	18.30
124	18.45
125	18.60
126	18.75
127	18.90
128	19.05
129	19.20
130	19.35
131	19.50
132	19.65
133	19.80
134	19.95
135	20.10
136	20.25
137	20.40
138	20.55
139	20.70
140	20.85
141	21.00
142	21.15
143	21.30
144	21.45
145	21.60
146	21.75
147	21.90
148	22.05
149	22.20
150	22.35
151	22.50
152	22.65
153	22.80
154	22.95
155	23.10
156	23.25
157	23.40
158	23.55
159	23.70
160	23.85
161	24.00
162	24.15
163	24.30
164	24.45
165	24.60
166	24.75
167	24.90
168	25.05
169	25.20
170	25.35
171	25.50
172	25.65
173	25.80
174	25.95
175	26.10
176	26.25
177	26.40
178	26.55
179	26.70
180	26.85
181	27.00
182	27.15
183	27.30
184	27.45
185	27.60
186	27.75
187	27.90
188	28.05
189	28.20
190	28.35
191	28.50
192	28.65
193	28.80
194	28.95
195	29.10
196	29.25
197	29.40
198	29.55
199	29.70
200	29.85
201	30.00
202	30.15
203	30.30
204	30.45
205	30.60
206	30.75
207	30.90
208	31.05
209	31.20
210	31.35
211	31.50
212	31.65
213	31.80
214	31.95
215	32.10
216	32.25
217	32.40
218	32.55
219	32.70
220	32.85
221	33.00
222	33.15
223	33.30
224	33.45
225	33.60
226	33.75
227	33.90
228	34.05
229	34.20
230	34.35
231	34.50
232	34.65
233	34.80
234	34.95
235	35.10
236	35.25
237	35.40
238	35.55
239	35.70
240	35.85
241	36.00
242	36.15
243	36.30
244	36.45
245	36.60
246	36.75
247	36.90
248	37.05
249	37.20
250	37.35
251	37.50
252	37.65
253	37.80
254	37.95
255	38.10
256	38.25
257	38.40
258	38.55
259	38.70
260	38.85
261	39.00
262	39.15
263	39.30
264	39.45
265	39.60
266	39.75
267	39.90
268	40.05
269	40.20
270	40.35
271	40.50
272	40.65
273	40.80
274	40.95
275	41.10
276	41.25
277	41.40
278	41.55
279	41.70
280	41.85
281	42.00
282	42.15
283	42.30
284	42.45
285	42.60
286	42.75
287	42.90
288	43.05
289	43.20
290	43.35
291	43.50
292	43.65
293	43.80
294	43.95
295	44.10
296	44.25
297	44.40
298	44.55
299	44.70
300	44.85
301	45.00
302	45.15
303	45.30
304	45.45
305	45.60
306	45.75
307	45.90
308	46.05
309	46.20
310	46.35
311	46.50
312	46.65
313	46.80
314	46.95
315	47.10
316	47.25
317	47.40
318	47.55
319	47.70
320	47.85
321	48.00
322	48.15
323	48.30
324	48.45
325	48.60
326	48.75
327	48.90
328	49.05
329	49.20
330	49.35
331	49.50
332	49.65
333	49.80
334	49.95
335	50.10
336	50.25
337	50.40
338	50.55
339	50.70
340	50.85
341	51.00
342	51.15
343	51.30
344	51.45
345	51.60
346	51.75
347	51.90
348	52.05
349	52.20
350	52.35
351	52.50
352	52.65
353	52.80
354	52.95
355	53.10
356	53.25
357	53.40
358	53.55
359	53.70
360	53.85
361	54.00
362	54.15
363	54.30
364	54.45
365	54.60
366	54.75
367	54.90
368	55.05
369	55.20
370	55.35
371	55.50
372	55.65
373	55.80
374	55.95
375	56.10
376	56.25
377	56.40
378	56.55
379	56.70
380	56.85
381	57.00
382	57.15
383	57.30
384	57.45
385	57.60
386	57.75
387	57.90
388	58.05
389	58.20
390	58.35
391	58.50
392	58.65
393	58.80
394	58.95
395	59.10
396	59.25
397	59.40
398	59.55
399	59.70
400	59.85
401	60.00
402	60.15
403	60.30
404	60.45
405	60.60
406	60.75
407	60.90
408	61.05
409	61.20
410	61.35
411	61.50
412	61.65
413	61.80
414	61.95
415	62.10
416	62.25
417	62.40
418	62.55
419	62.70